



Binghamton University Full Faculty Meeting

Tuesday, November 28, 2017



Faculty Senate Meeting fall 2017

- University Statements addressing legislation, incivility, tragic events, etc.
binghamton.edu/president/statements.html
- Financial Report and Finances for 2018-19
- Road Map Renewal



University Statements

[/www.binghamton.edu/president/statements.html](http://www.binghamton.edu/president/statements.html)

[binghamton.edu](http://www.binghamton.edu) → [president](#)

University Statements

An archive of statements by Binghamton University President Harvey G. Stenger and other University leaders on issues of importance to the University community and beyond

2017

[Letter to U.S. Congresswoman Claudia Tenney about Tax Cut and Jobs Act concerns](#)

[Message from President Harvey G. Stenger about racist incident](#)

[Message from President Harvey G. Stenger about racist drawing](#)

[Letter to U.S. Congresswoman Claudia Tenney about DACA concerns](#)

[Updated Message from President Harvey G. Stenger on DACA](#)

[Message from President Harvey G. Stenger on DACA](#)

[Message from President Harvey G. Stenger on Charlottesville, Va.](#)

[Message from President Harvey G. Stenger to University of Virginia President Teresa A. Sullivan about recent events in Charlottesville, Va.](#)

[Letter from President Harvey G. Stenger to the campus about student protest](#)

[University statement about the "blue-light" proposal](#)

[Letter concerning death of a student](#)

[Letter concerning a new Executive Order](#)

[Letter concerning Title IX interpretation](#)

[Travel ban report](#)

[Letter concerning Executive Order](#)

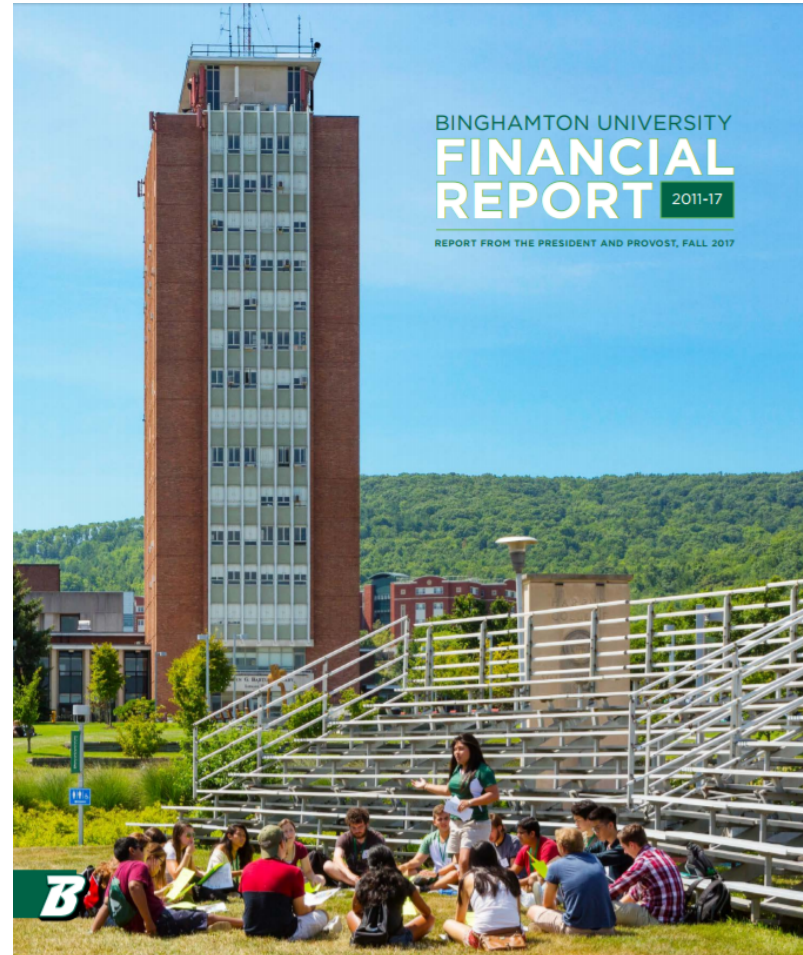
[Report on offer of resources to international students](#)



2011-2017

Financial Report issued

- binghamton.edu/financeandbudgeting/





2017-18 FINANCIAL REPORT:

Sources of revenue

- State Purpose
- State University Tuition Reimbursement (SUTRA)
- Income Fund Reimbursement (IFR)
- Dormitory Income Fund Reimbursement (DIFR)
- Research Foundation income (RF)
- Binghamton University Foundation (BUF)



Expenditures

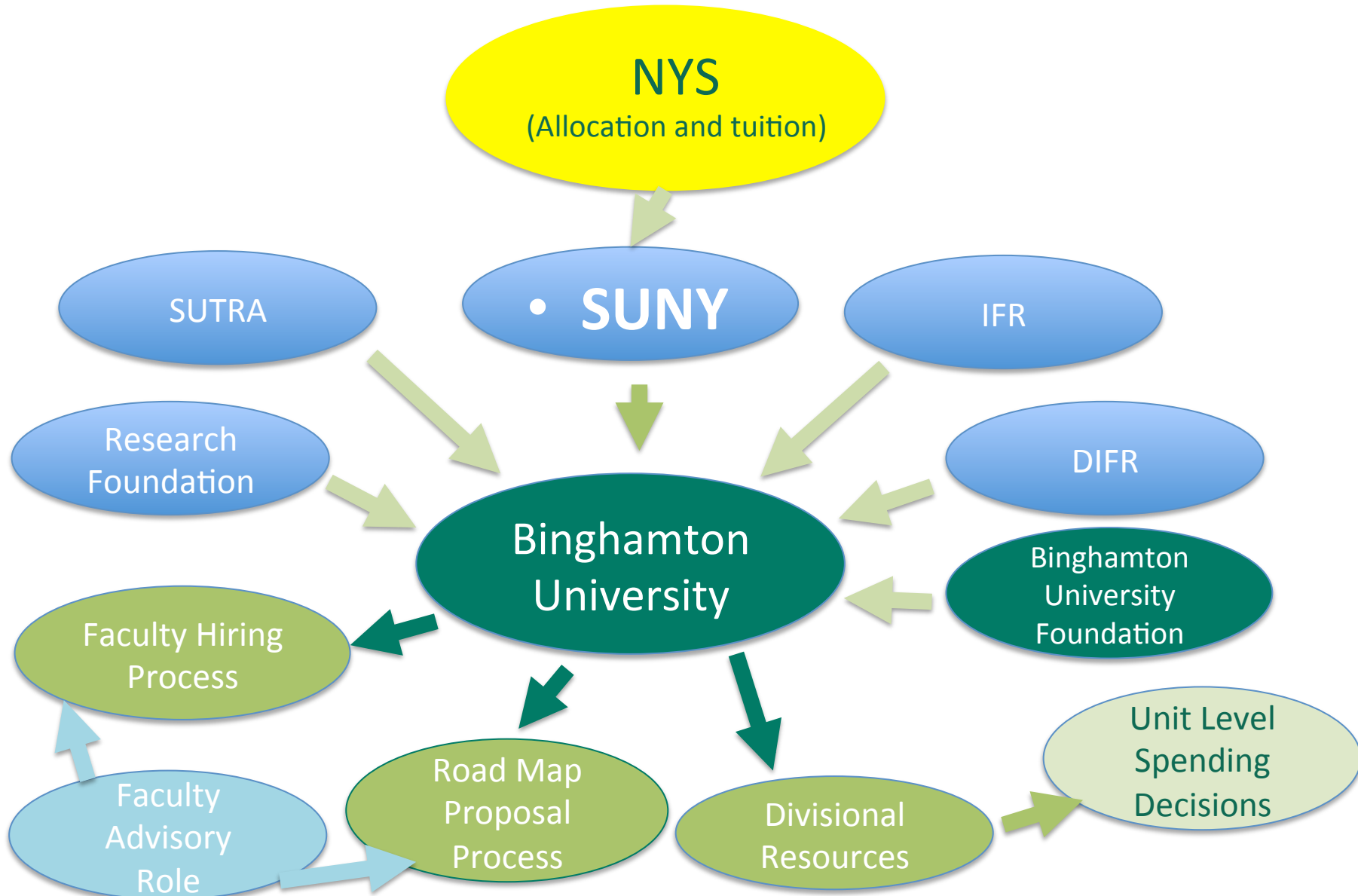
- By funding source
- By division (VP level)
- By academic unit (college/school level)
- Versus enrollment (college/school level)

Principles and observations

- Faculty expenditures follow school- and college-level enrollment
- Expenditures on faculty increasing at twice the rate of administrative staff
- Administrative staff expenditure increases only paid with student fee income – not tuition or state allocation



Distribution of funds





Future directions

- NYSUNY 2020 funding ended, future appropriations uncertain
- Areas for continued growth and revenues
 - Graduate enrollment
 - Sponsored research
 - Capitalization of intellectual property, patents and licensing
 - Philanthropic support
 - Clinical programs



2018-19 Budget forecasts

- State budget deficit estimated at over \$4 billion
- SUNY will be expected to share burden
- SUNY Maintenance of Effort unlikely to continue
- Long-overdue raises for UUP and CSEA are unlikely to be funded
 - Recurring cost to Binghamton of about \$3 million/year, with double hit in first year of raises (2018-19)
- Campus will work with faculty and staff leaders to address budget shortfalls



Revenue increases

- Need to reverse trend in decreasing out-of-state undergraduate enrollment through
 - increased marketing and visibility
 - increasing our geographic footprint
- Proposing a slight increase in NYS undergraduates
- Increase graduate student enrollment
 - UG +150; GR +290
 - Will increase S/F ratio from 19.5 to 19.9



Expenditure reductions

- Non-academic units – student affairs, academic administration, research division, operations, diversity, athletics, foundation and advancement
- Reductions of 1 to 2 percent per year for the next four years
- Each college/school and division will know their targets for enrollment growth and expenditure reduction shortly



Road Map Renewal





UNIVERSITY INITIATIVES:

Develop a College of Nursing and Health Sciences

- Relocate Decker School of Nursing to Johnson City
- Expand the curricular offerings of the school into new, allied health graduate programs
- Expand research and community outreach programs
- Build additional clinical facilities on site

College of Nursing and Health Sciences

co-chairs: Mario Ortiz and Gale Spencer

project manager: Michael McGoff



UNIVERSITY INITIATIVES:

Health Sciences Core Facility

- Provide advanced instrumentation for research and education activities in health sciences
- Attract external funding and high-quality faculty and students
- Foster research partnerships with industry, hospitals and other universities

Health Sciences Core Facility

co-chairs: Terry Deak and Susan Bane,
project manager: Mary Beth Curtin



UNIVERSITY INITIATIVES:

Data Science Initiative

- Applied data science theory and practice is rapidly expanding across almost every discipline in higher education
- Support faculty and facilities to expand our expertise in this evolving area
- Enhance research and education offerings across the campus

Data Science

co-chairs: John Bay and Anton Schick

project manager: JoAnn Navarro



UNIVERSITY INITIATIVES:

Presidential Diversity Postdoctoral Fellowships

- Provides a pathway to increased faculty diversity by supporting postdoctoral fellowships
- Will assist programs that have historically found it challenging to hire diverse faculty

Diversity Post-doc Fellowships

co-chairs: Daryl Santos and Fernando Guzman,
project manager: Joe Schultz



DIVISIONAL INITIATIVES:

Programs

- High-Impact Learning Innovations Council (HILIC)
- Recruitment and retention
- Binghamton University community revitalization efforts
- Center for Inter-professional Education and Research
- Global initiatives project



DIVISIONAL INITIATIVES:

Facilities

- Enhancement of innovative technologies infrastructure
- Digital commons and innovation lab
- Social Science Experimental Suite
- Renovation of the Glenn G. Bartle Library
- University Conference and Welcome Center



Moving the renewal forward

- Implementation plans will be developed for University initiatives – Seed funding allocated to move each forward
 - Costs and sources of revenues
 - Outcomes and metrics
- Funding will be provided for University and divisional initiatives according to priority and availability



Questions?