

BINGHAMTON
UNIVERSITY
STATE UNIVERSITY OF NEW YORK

Spring Full Faculty Meeting

March 29, 2022

Harvey G. Stenger
President



2021

**A remarkable year for
Binghamton University**

- COVID
- National recognition
- Student success
- Campaign
- Faculty kudos
- Research
- A more equitable campus
- A growing campus

Managing COVID



Returning to normal

- In-person
- Vaccinations



Residential life

- Q/I housing
- >200,000 tests



Campus-wide response

- Building changes
- Communications

A learning experience

- Response
- Minimize impact on student success

Moving beyond COVID

- It's time to refocus on our Road Map and accomplish important goals.

2021: Binghamton increases national recognition



University- wide

#33

public universities
(up 8 from 2021)

#83

all universities
(up 5 places)

#57

best value

#42

best undergraduate
teaching
(U.S. News)

Schools and programs

Top 10

public business
school (SOM)
(Poets&Quants)

#31

Best college
for nursing
(Newsweek)

16

graduate programs
in top 100
(U.S. News)

Social impact

#46

best for
veterans

#90

social mobility

Watson College
receives award
for diversity
(ASEE)

HEED Award
(INSIGHT Into
Diversity)



Student-centered education

Primed for success

- **First-year Research Immersion (FRI)**
 - 10 research streams in STEM
 - 1,264 students have completed the FRI program
 - Published, mentors and continue to graduate school
- **Source Project**
 - Six research streams in humanities and social sciences
 - Currently in fourth year, 135 students enrolled
- **New academic programs**
 - Decker College
 - Online RN-BS program
 - Occupational therapy, physical therapy, and speech and language pathology

Enhancing student support

Collegiate professors

- Hinman: Associate Professor Jay Newberry
- College-in-the-Woods: Professor Andy Merriwether
- Mountainview: Associate Professor Dana Stewart
- Newing and Dickinson: currently seeking candidates

Academic Assessment Day

- Developed out of COVID response to student dislocations
- Fast interactions with students, identifies concerns



Progress toward degrees

- First-year retention rate (93%) and six-year graduation rate (83%) highest in SUNY
- Commencement returns to normal for class of 2022





Fundraising for Binghamton's future

Comprehensive gifts campaign

○ **Third comprehensive gifts campaign goes public** **April 9, 2022**

- Areas of emphasis
 - student success
 - faculty support
 - access to excellence
- Ambitious campaign goal
 - Binghamton has received 20 gifts of >\$1 million during campaign — only five in the previous 73 years
- Positive fundraising trajectory
 - \$15 million/year 2018–21, compared to just \$5 million in 2014
 - Endowed funds \$148 million, up 63% since 2015

Faculty excellence and recognition

**SUNY recognizes
Binghamton's best**

Five distinguished professors in 2021



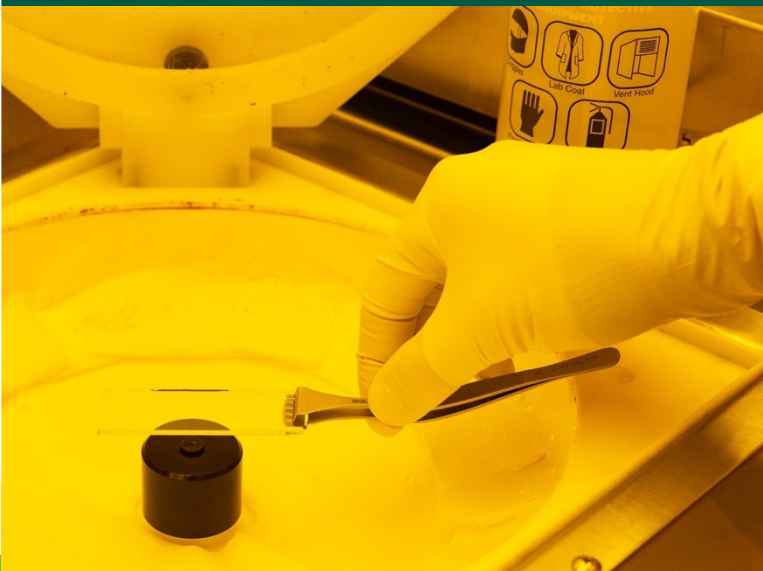
Jaimee Wriston Colbert

**Distinguished Professor
of English
and Creative Writing**

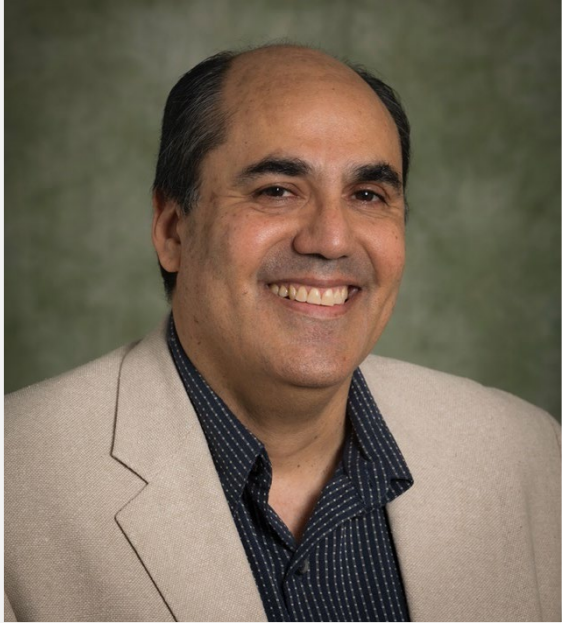


Gloria Meredith

**Distinguished Professor
of Pharmaceutical
Sciences**



distinguished professors in 2021



Pedro Ontaneda

**Distinguished Professor of
Mathematical Sciences**



Mark Poliks

**Distinguished Professor
of Systems Science and
Industrial Engineering**



Daryl Santos

**Distinguished Service
Professor of Systems Science
and Industrial Engineering**

And 3 more Distinguished Professors in 2022



Mohammad Khasawneh

**distinguished professor
of systems science and
industrial engineering**



Weiyi Meng

**distinguished
service professor
of computer
science**



Kaiming Ye

**distinguished
professor of
biomedical
engineering**

38

**current
distinguished
faculty teach at
Binghamton**



Worldwide impact

Growing research programs

- **Record seven faculty members received prestigious National Science Foundation CAREER awards**
- **New Energy New York (NENY) named one of only three New York finalists in federal Build Back Better Regional Competition**
 - AVP Per Stromhaug and Distinguished Professor of Chemistry and Materials Science M. Stanley Whittingham
 - NENY project builds on Whittingham's Battery NY initiative
 - Could result in a \$125M 10-year program
- **Koffman Southern Tier Incubator fosters entrepreneurship**
 - 54 current startups, 354 full-time employees, 82 interns
 - 19 companies have graduated since it opened in 2017



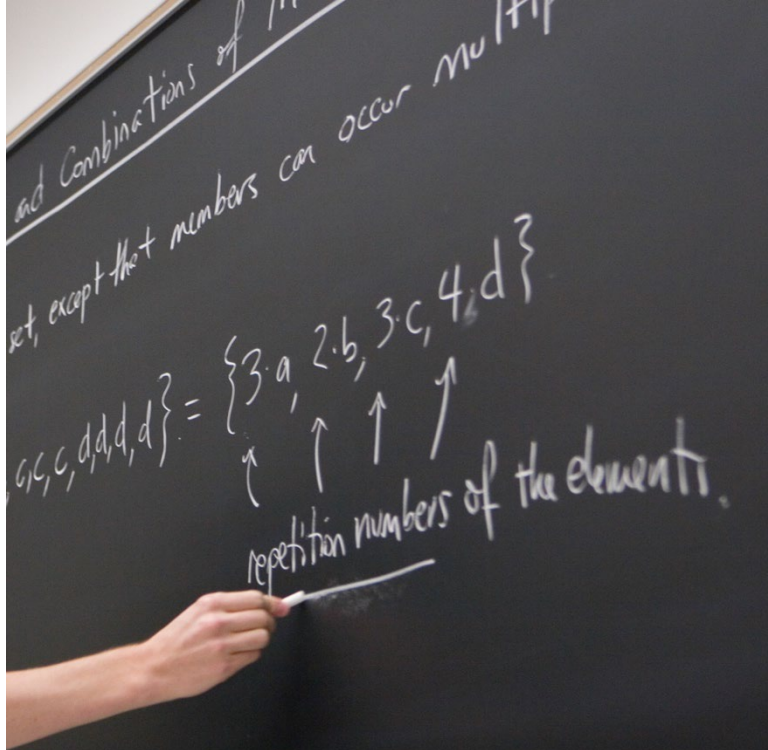
A more equitable campus

- **Division of Diversity, Equity and Inclusion adding staff**
- **Harriet Tubman Center for Freedom and Equity opened**
 - History Professor Anne C. Bailey, director
 - Research focus on equity in history, education and medicine/STEM fields
- **Truth and Reconciliation Commission**
 - Anne C. Bailey and Assoc. Dean for DEI Sharon Bryant, co-chairs
 - Recommendations: increase faculty diversity, improve retention of BIPOC faculty/staff, streamline responses to racial incidents, increase representation of BIPOC in curriculum, strengthen academic support for BIPOC students, increase diversity of University Police, bring more BIPOC into leadership, address “invisible labor” of BIPOC faculty and staff



A more equitable campus

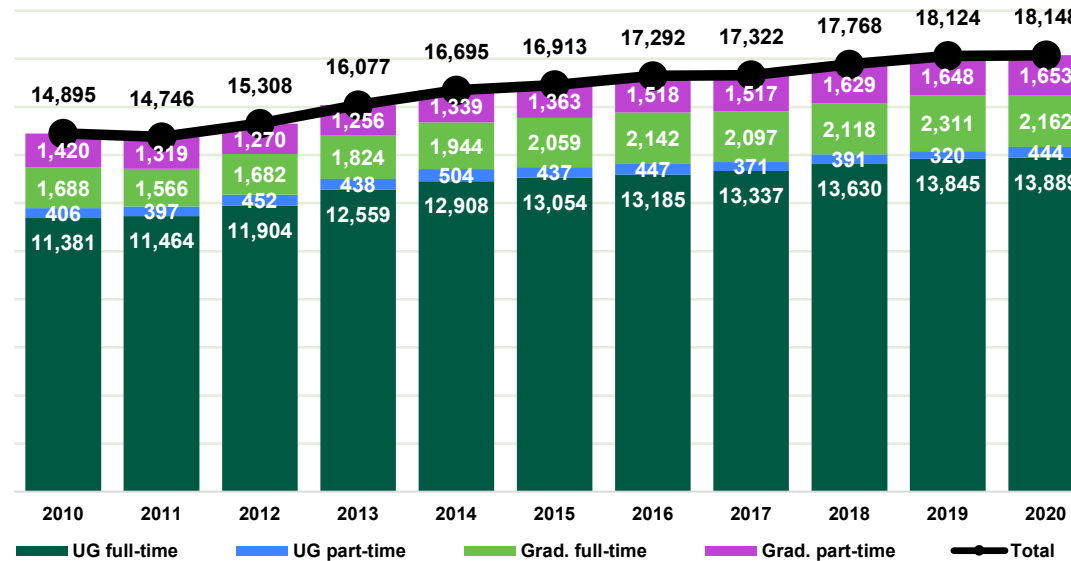
- **Campus Citizen Review Board (CCRB)**
 - Reviewing University Police policies and practices
 - Recommendations: strengthen Community Policing Program; increase gender and racial diversity; body cameras and technology; de-escalation and mental health responses
 - Implementation Team assigned to make progress on these recommendations
 - Body cameras to be distributed in fall 2022
- **Violence, Abuse and Rape Crisis Center (VARCC)**
 - Opened in September 2021
 - Centralizes support offices and services
 - Additional counselors hired



A growing campus

Students,
faculty, and
staff

Full-time and part-time enrollment

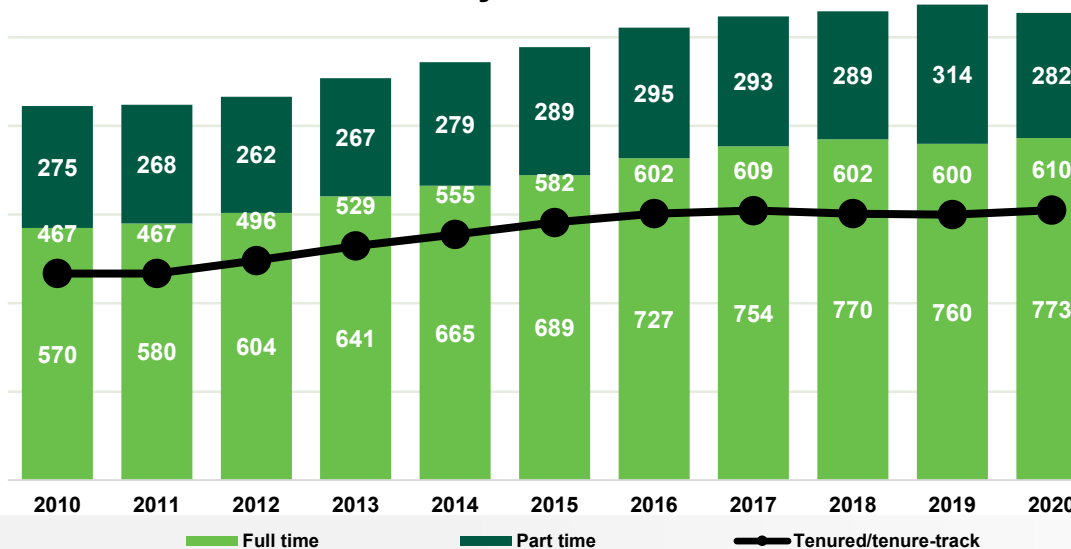


22%
increase in
enrollment

33%
increase in
FT faculty

16%
increase in
staff

Faculty members



New campus construction

Hinman Dining Hall

- \$30M renovation and expansion



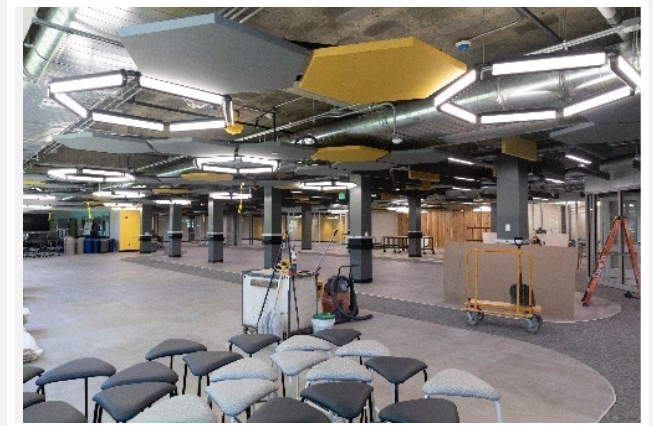
Science 2 and Science 4

- \$30M for offices, labs, mechanicals and recladding



Bartle and Science Libraries

- \$50M renovation of third floor, innovation lab on first floor



New campus construction, continued

Baseball Stadium Complex

- \$60 million stadium and training facilities (+\$15 fieldhouse in phase two)



SOPPS R&D Center

- \$15 million project for research space for SOPPS faculty and graduate students



Kramer Welcome Center

- \$1.25 million donation to let campus create a first impression for visitors



A fitting home for the fine arts

- Oldest unrenovated building on campus
- CS Arch hired to develop plans for renovating facility
- Committee selected and will produce master plan
 - Annette Burnette, Diane Butler, Natalija Mijatovic, Paul Schleuse, Michelle Ponczek, Sondra Hilldale, Julie Carl and Sally Oaks (Physical Facilities)
- **Establishing new Binghamton University School of the Arts, under Harpur College**





Challenges ahead

- **Continued impact of COVID**
 - Testing, cleaning and sanitation
 - Potential for new variants and spikes
- **Decline in international enrollment**
 - COVID travel restrictions and reduced demand for international education
 - Ongoing international tensions have exacerbated challenges — enrollment of Chinese students, especially, has declined
 - A bright spot: international applications are up 17% for fall 2022



Budgetary impacts

- **Significant COVID costs (~\$50 million)**
 - 2020–21 lost international tuition
 - 2020–21 reduced residential occupancy
 - COVID testing, cleaning and campus modifications
 - Residential refunds for spring 2020
 - These one-time costs were offset by federal COVID relief
- Annual operating budget going forward: \$8–11 million deficit for 2021–22, which will be addressed through reserves
- A positive proposed state budget may reduce the deficit to \$4–5 million
- State budget (due April 1) will likely have increased support for faculty salaries, EOP, and eliminate TAP gap



The path forward

The Binghamton University Road Map 2022–23

○ Road Map

- Road Map introduced in 2013, renewed in 2017
- Reignited in 2021 with a series of projects and established SP6: Internationalization
- Setting new targets for metrics for 2026

○ Current status of Strategic Priorities:

- SP1: Creative Activities — increasing faculty online presence
- SP2: Learning and Teaching — increasing staff to support student success with early intervention
- SP3: Inclusive Campus — increase undergraduate URM enrollment
- SP4: Engagement — working toward Carnegie Classification for Community Engagement
- SP5: Strategic Investments — focusing on planned giving and data analysis of alumni
- SP6: Internationalization — international admissions enhancements through data analysis

Building the academic team: provost and dean searches

- Donald Hall has been appointed executive vice president for academic affairs and provost
 - Currently Robert L. and Mary L. Sproull Dean of Faculty of Arts, Sciences and Engineering (AS&E) at the University of Rochester
 - Previously served as Herbert and Ann Siegel Dean of the Arts and Sciences and professor of English at Lehigh University
- Ongoing dean's searches for School of Management and School of Pharmacy and Pharmaceutical Sciences — expect announcements soon



Thank you!

If you have questions, please write me
at hstenger@binghamton.edu