



2009-2010 Strategic Plan Dashboard Results

Office of Institutional Research and Assessment

BINGHAMTON
UNIVERSITY
STATE UNIVERSITY OF NEW YORK

**Binghamton University Office of Institutional Research and Assessment
Performance Metrics Definitions**

ACADEMIC EXCELLENCE	
Fall Undergraduate and Graduate Headcount	Total fall undergraduate and graduate headcount
Student-to-Faculty Ratio (FT+1/3PT)	Student-to-faculty ratio based on full-time plus 1/3 part-time methodology
% of Matric UG Out of State - Domestic	Percent of matriculated undergraduates who are out-of-state domestic
% of Matric UG Out of State - International	Percent of matriculated undergraduates who are out-of-state international
Average SAT - Incoming Freshman	Average SAT for first-time freshmen
1st Year Retention - Frosh	The number of full-time freshmen who were retained
1st Year Retention - Transfers	The number of full-time transfers who were retained
6 Year Graduation - Frosh	The number of full-time freshmen from a specific cohort who graduated within 6 years
6 Year Graduation - Transfers	The number of full-time transfers from a specific cohort who graduated within 6 years
ENGAGEMENT & OUTREACH	
Economic Impact (\$M)	The impact (in dollars) on the New York State economy resulting from expenditures and economic activity related to the University
Volunteer Value	The total value (in dollars) of the labor performed on a volunteer, internship, or clinical basis by Binghamton University students
Undergraduate and Graduate Student Internships	Headcount of students enrolled in internship courses
New Technology (Patent) Disclosure	New Technology Disclosure is the document submitted to the Office of Technology Transfer and Innovation Partnerships when a faculty, staff or student comes up with something they believe is novel and useful, and might benefit from being protected (possibly as a patent, but not necessarily so)
ADAPTIVE INFRASTRUCTURE	
Value of Endowment (\$1,000s, FY)	Market value of investments as of a point in time
Total Private Support (\$1,000s, FY)	Total fundraising support for the period stated, as countable under CASE standards
Federal and Total Sponsored Expenditures (\$1,000s)	Total externally sponsored award expenditures for fiscal year administered through the Research Foundation identified by federal expenditures and total expenditures including federal
Awards (\$1,000s, FY)	Total dollars awarded by external sponsors through the Research Foundation for specific fiscal year
CAMPUS CULTURE	
(All) Employees by Job Family	All employee counts by Equal Employment Category
FT Faculty by Gender & Ethnicity	Full-time faculty counts by gender and ethnicity
Graduate Headcount by Gender and Ethnicity	Total fall graduate headcount by gender and race/ethnicity
Undergraduate Headcount by Gender and Ethnicity	Total fall undergraduate headcount by gender and race/ethnicity
ENROLLMENT	
Total Fall Headcount	Total number of students officially registered in fall semesters
AAFTE	Annual average full time equivalent (Fall FTE + Spring FTE)/2
Ratio of Undergraduate to Graduate Enrollments	Total undergrad headcount divided by total graduate headcount (fall semesters)
% of Matric UG Out of State - International	Percent of matriculated undergraduates who are out-of-state international
% of Matric UG Out of State - Domestic	Percent of matriculated undergraduates who are out-of-state domestic
% Underrep. Minority - UG and GD	Percent underrepresented minorities - undergraduate and graduate

STAFF	
Full-Time and Part-Time	Total full-time and part-time staff counts (fall semesters)
FACULTY	
Full-Time and Part-Time	Full-time and part-time counts of anyone with a faculty title on the HR file (including administrators who teach)
% Tenure Track	Number of tenure track faculty divided by full-time faculty
Female Faculty: % of FT, Fall	Percentage of full-time faculty who are female
Underrep. Minority Faculty: % of FT, Fall	Percentage underrepresented minorities - full-time faculty
Student-to-Faculty Ratio (FT+1/3 PT)	Student-to-faculty ratio based on full-time plus 1/3 part-time methodology
FINANCE	
Total Allocation (\$1,000s, FY)	Allocation of all funds on our campus including Research Foundation and BU Foundation
State Appropriations - Tuition	The campus generated revenue portion of our annual operating budget which includes tuition, fees, and other designated revenue.
State Appropriations - BAP	The State support portion of our annual operating budget funded from State tax revenues
Value of Endowment (\$1,000s, FY)	Market value of investments as of a point in time
Total Private Support (\$1,000s, FY)	Total fundraising support for the period stated, as countable under CASE standards
Alumni Participation Rate (FY)	Binghamton's Alumni Participation Rate, which is defined by CAE as the number of alumni donors as a percentage of the number of alumni of record (those for whom the institution has a good address or means of contact). This includes all alumni as defined by CAE (undergraduate degree, graduate degree only, and associate alumni)
National Alumni Giving (Council for Aid to Education)	The average Alumni Participation Rate for all higher education institutions who completed the CAE's Voluntary Support of Education (VSE) survey that year. Same definition of the Alumni Participation Rate as noted above applies.
UNDERGRADUATE ADMISSIONS	
Freshman Applications	Total number of first-time freshmen who applied
% SUNY Selectivity Group 1	A measure of quality based on first-time full-time students' SAT and high school gpa scores; only includes first-time full-time who have both SAT and high school GPA scores
Average SAT	Average SAT for first-time freshmen
Transfer Applications	Total number of transfers who applied
SPACE (NON-RESIDENTIAL)	
% Academic	Academic space is all space related to instruction and academic departments. It includes faculty offices, academic department administration offices and support space, classrooms, class labs, specialized instructional space, and departmental research space.
% Organized Research	Organized research space is space used for externally funded research and includes research labs, research offices and specialized facilities. It also includes space for organized research centers and institutes.
RETENTION AND GRADUATION	
1st Year Retention - Frosh	The number of full-time freshmen who were retained
1st Year Retention - Transfers	The number of full-time transfers who were retained
6 Year Graduation - Frosh	The number of full-time freshmen from a specific cohort who graduated within 6 years
6 Year Graduation - Transfers	The number of full-time transfers from a specific cohort who graduated within 6 years
RESEARCH	
Federal and Total Sponsored Expenditures	Total externally sponsored award expenditures for fiscal year administered through the Research Foundation identified by federal expenditures and total expenditures including federal
Awards (\$1,000s, FY)	Total dollars awarded by external sponsors through the Research Foundation for specific fiscal year.
Patent Disclosures	New Technology Disclosure is the document submitted to the Office of Technology Transfer and Innovation Partnerships when a faculty, staff or student comes up with something they believe is novel and useful, and might benefit from being protected (possibly as a patent, but not necessarily so).

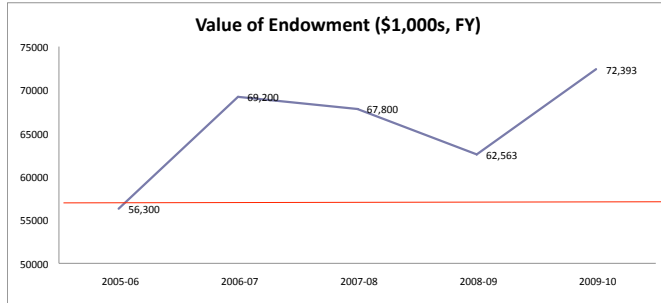
**Binghamton University Performance Metrics—
2005 Strategic Plan (Fall 2010)**

ADAPTIVE INFRASTRUCTURE	LAST REPORTING YEAR	VALUE	GOAL	STATUS
Value of endowment (\$1,000s, FY)	2009-10	72393	54350	Achieved
Total private support (\$1,000s, FY)	2009-10	31606	20000	Achieved
Awards (\$1,000s, FY)	2009-10	44302	31000	Achieved
Federal sponsored expenditures (\$1,000s)	2009-10	25964	28052	In Progress
Total sponsored expenditures (\$1,000s)	2009-10	36917	50156	In Progress
ENGAGEMENT AND OUTREACH	LAST REPORTING YEAR	VALUE	GOAL	STATUS
Economic impact (\$M)	2008-09 (FY)	1011.5	883	Achieved
Volunteer value (\$M)	2008-09 (FY)	7.8	2.3	Achieved
Undergraduate and graduate student internships	2009-10 (FY)	950	935	Achieved
ACADEMIC EXCELLENCE	LAST REPORTING YEAR	VALUE	GOAL	STATUS
Percentage of matriculated students out of state--domestic	2009	9.10%	7.00%	Achieved
Percentage of matriculated students out of state--international	2009	9.00%	7.00%	Achieved
Average SAT--incoming FY students	2009	1288	1263	Achieved
Native student first-year retention	2008	90.40%	90.40%	Achieved
Transfer student first-year retention	2008	86.00%	85.50%	Achieved
6-year graduation rate--native students	2003	81.40%	80.00%	Achieved
6-year graduation rate--transfer students	2003	81.60%	79.00%	Achieved
Fall undergraduate student headcount	2010 (day 20 only)	11736	11600	Achieved
Fall graduate student headcount	2010 (day 20 only)	3097	3000	Achieved
Student-to-faculty ratio (FT+1/3 PT)	2009	19.70	20.00	Achieved
CAMPUS CULTURE	LAST REPORTING YEAR	VALUE	GOAL	STATUS
Percentage of under-represented minorities--undergraduates	2009	13.00%	12.00%	Achieved
Percentage of under-represented minorities--graduates	2009	6.80%	8.00%	In Progress
ENROLLMENT	LAST REPORTING YEAR	VALUE	GOAL	STATUS
Total Fall headcount	2010	14833	14621	Achieved
AAFTE	2009	14495	14019	Achieved
Ratio of undergraduate to graduate enrollments	2010	3.79	3	In Progress
Percentage of matriculated students out of state--domestic	2009	9.10%	7.00%	Achieved
Percentage of matriculated students out of state--international	2009	9.00%	7.00%	Achieved

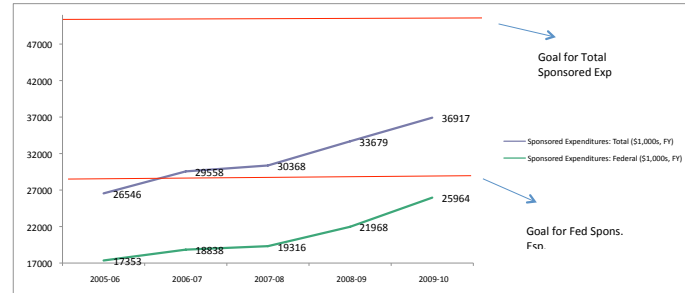
FACULTY	LAST REPORTING YEAR	VALUE	GOAL	STATUS
Full-time faculty	2009	595	644	In Progress
Part-time faculty	2009	244	278	In Progress
Percentage of tenure-track faculty	2009	82.00%	84.00%	In Progress
Female faculty, % of FT	2009	38.00%	37.00%	Achieved
Under-represented minority faculty, % of FT	2009	7.00%	6.00%	Achieved
Student-to-faculty ratio (FT+1/3 PT)	2009	19.70	20.00	Achieved
FINANCE	LAST REPORTING YEAR	VALUE	GOAL	STATUS
Total allocation (\$1,000s, FY)	2009	251205	226000	Achieved
Value of endowment (\$1,000s)	2009-10	72393	54350	Achieved
Alumni participation rate	2009-10	8.00%	9.00%	In Progress
UNDERGRADUATE ADMISSIONS	LAST REPORTING YEAR	VALUE	GOAL	STATUS
Freshman applications	2010	27161	24048	Achieved
Transfer applications	2010	4560	3674	Achieved
Percentage SUNY selectivity— Group1	2009	88.00%	85.00%	Achieved
Average SAT upon admission	2009	1286	1263	Achieved
RESEARCH	LAST REPORTING YEAR	VALUE	GOAL	STATUS
Federal sponsored expenditures (\$1,000s)	2009-10	21968	32320	In Progress
Total sponsored expenditures (\$1,000s)	2009-10	36917	50156	In Progress
Patent disclosures	2008-09	29	25	Achieved
Total research awards (\$1,000s, FY)	2008-09	36,564	30755	Achieved
SPACE	LAST REPORTING YEAR	VALUE	GOAL	STATUS
Percentage of academic space	2009	41.20%	40.00%	Achieved
Percentage of organized research space	2009	19.80%	17.90%	Achieved

Binghamton University Dashboard— Performance Metrics

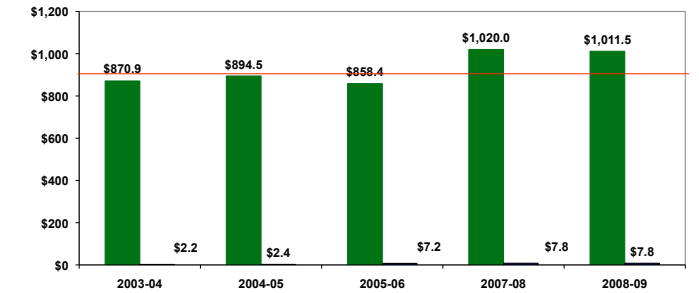
ADAPTIVE INFRASTRUCTURE Value of Endowment (\$1,000s, FY)



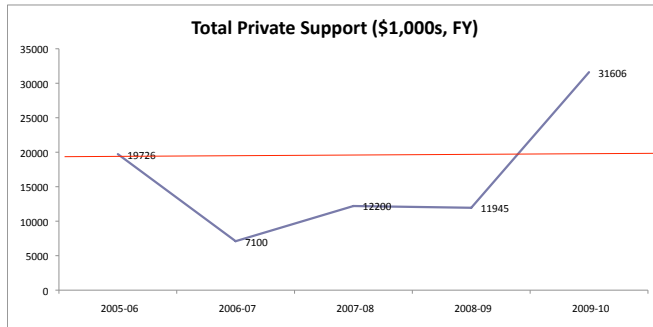
ADAPTIVE INFRASTRUCTURE Federal and Total Sponsored Expenditures (\$1,000s)



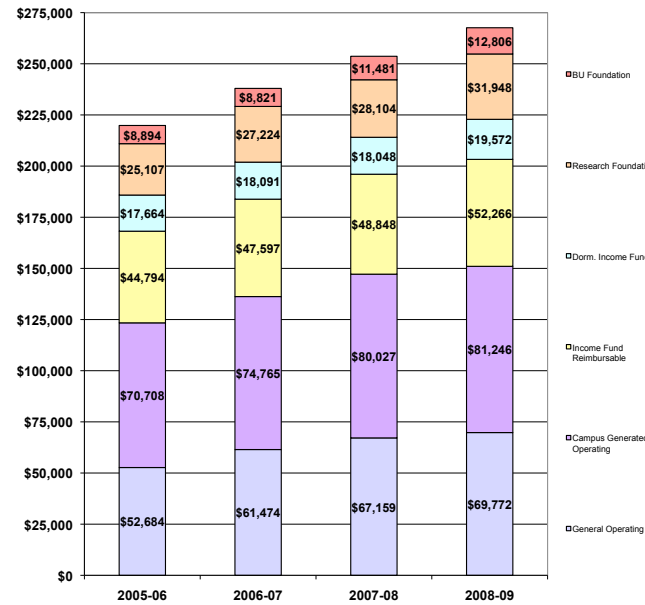
ENGAGEMENT & OUTREACH Economic Impact (\$M) and Volunteer Value



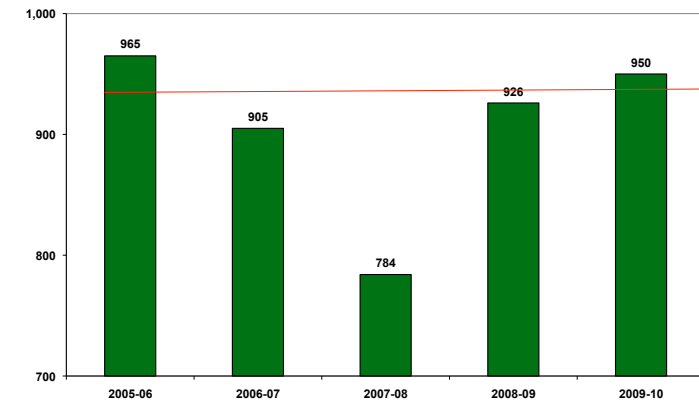
ADAPTIVE INFRASTRUCTURE Total Private Support (\$1,000s, FY)



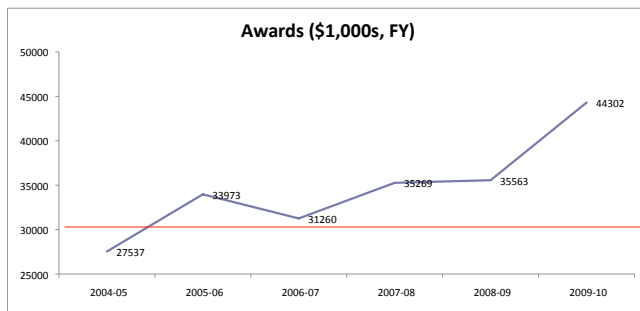
ADAPTIVE INFRASTRUCTURE All Funds Expenditures (in thousands)



ENGAGEMENT & OUTREACH Undergraduate and Graduate Credit-Bearing Student Internships



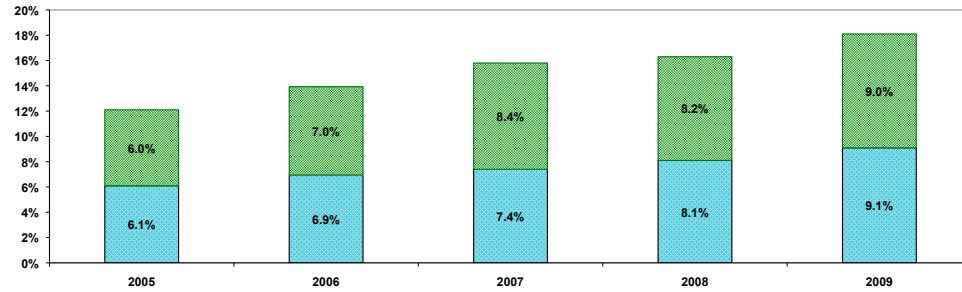
ADAPTIVE INFRASTRUCTURE Awards (\$1,000s, FY)



Binghamton University Dashboard – Performance Metrics

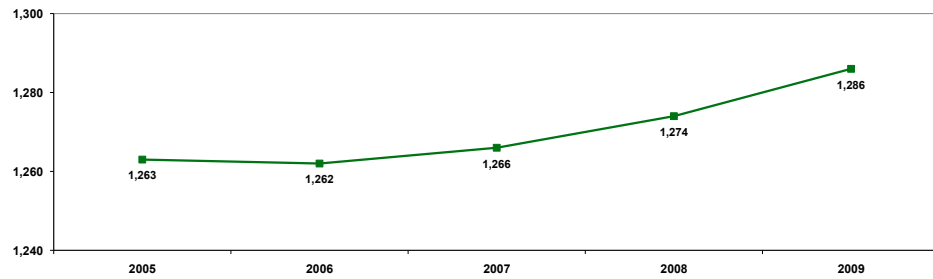
ACADEMIC EXCELLENCE

% of Matric UG Out of State
Domestic and International



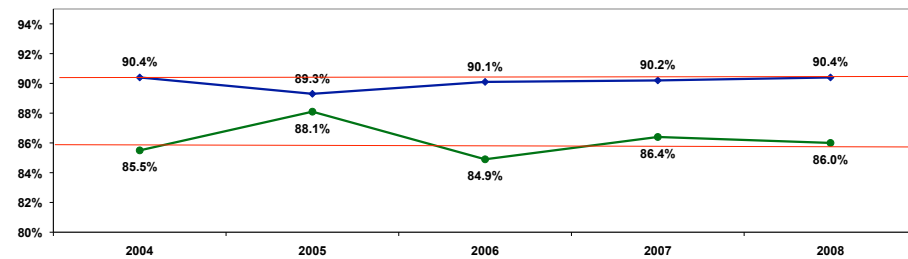
ACADEMIC EXCELLENCE

Average SAT - Incoming Freshman



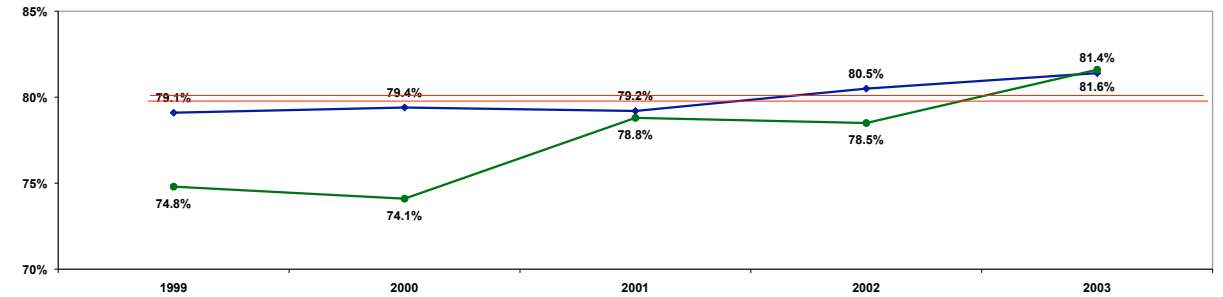
ACADEMIC EXCELLENCE

1st Year Retention - Native and Transfers



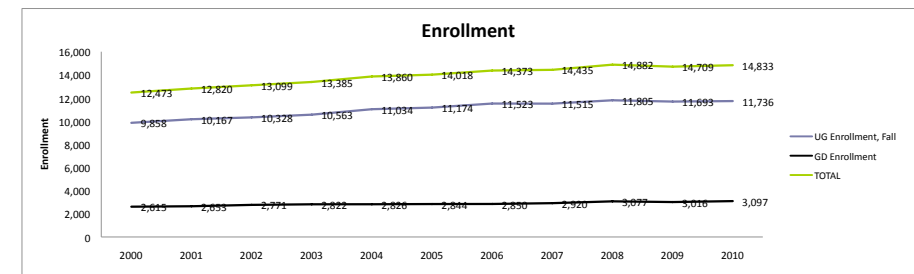
ACADEMIC EXCELLENCE

6 Year Graduation Rates - Native and Transfers



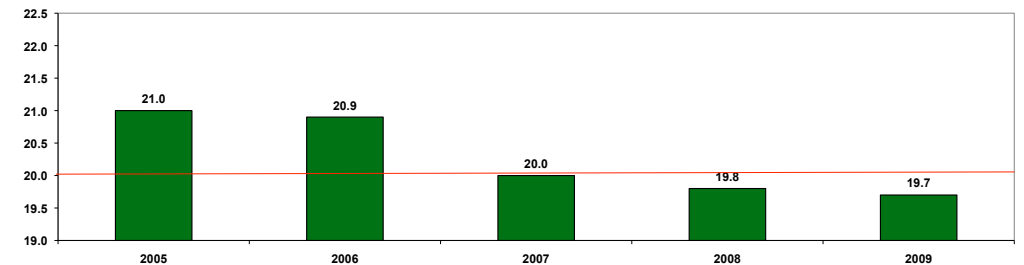
ACADEMIC EXCELLENCE

Fall Undergraduate and Graduate Headcount



ACADEMIC EXCELLENCE

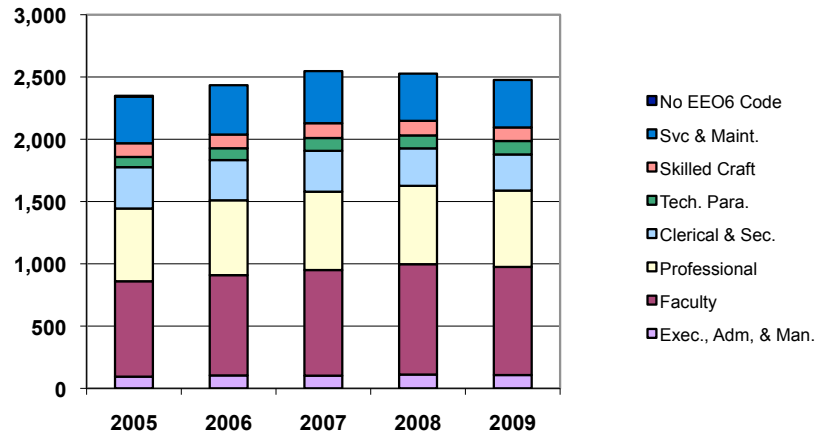
Student-to-Faculty Ratio (FT+1/3PT)



Binghamton University Dashboard— Performance Metrics

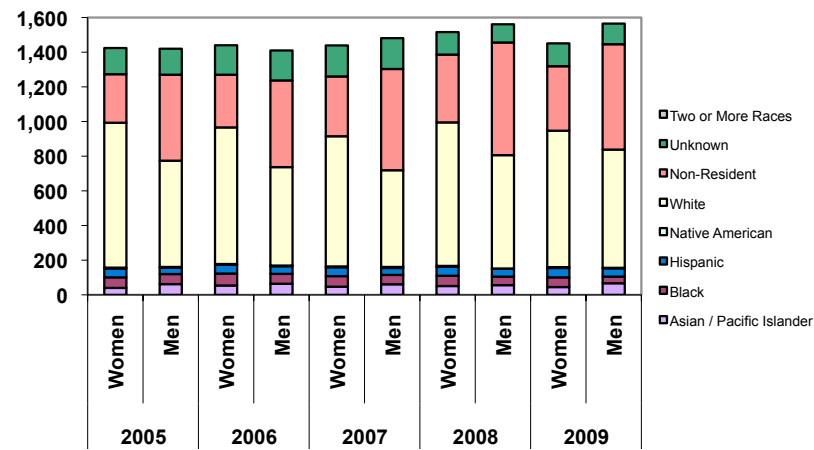
Campus Culture

(All) Employees by Job Family



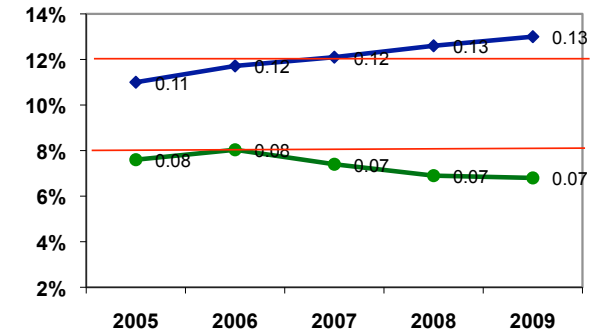
Campus Culture

Graduate Headcount by Gender and Race/Ethnicity



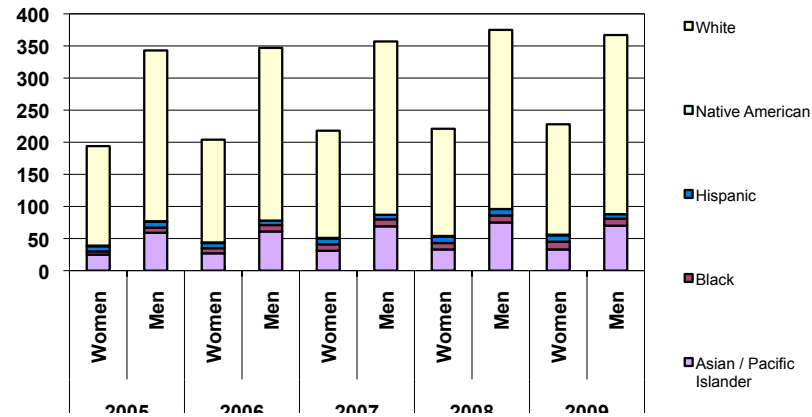
Campus Culture

% Underrep. Minority - UG and GD



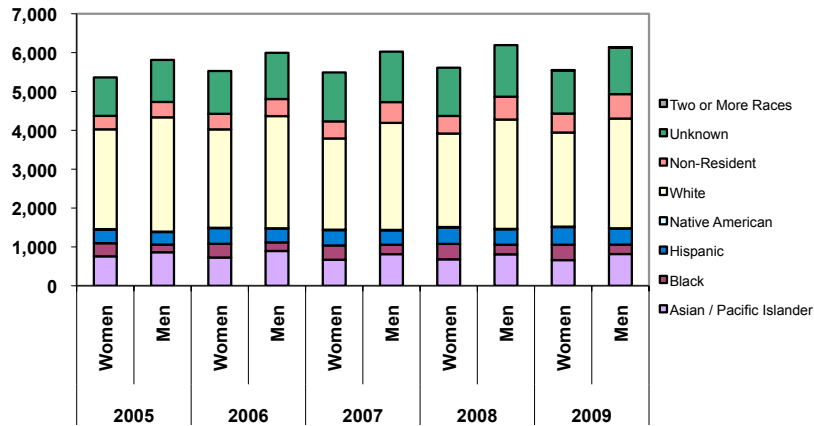
Campus Culture

FT Faculty by Gender and Race/Ethnicity



Campus Culture

Undergraduate Headcount by Gender and Race/Ethnicity

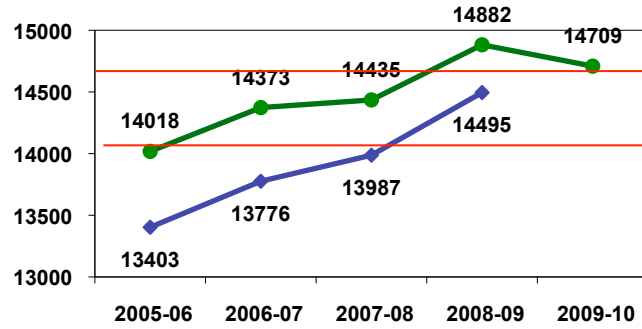


Note: * = Preliminary Data / Estimate

Binghamton University Dashboard— Performance Metrics

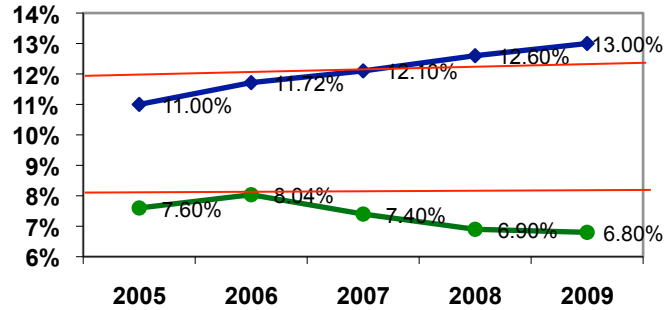
ENROLLMENT

Total Fall Headcount and AAFTE



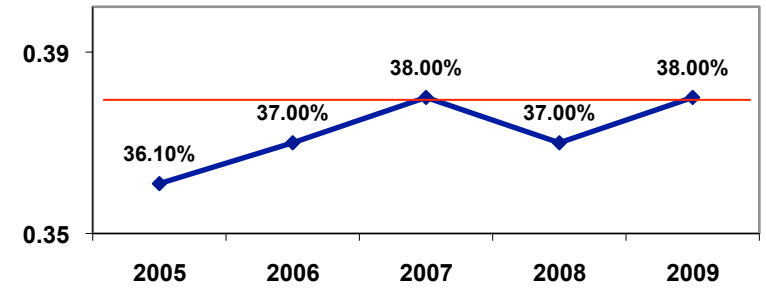
ENROLLMENT

% Underrep. Minority - UG and GD



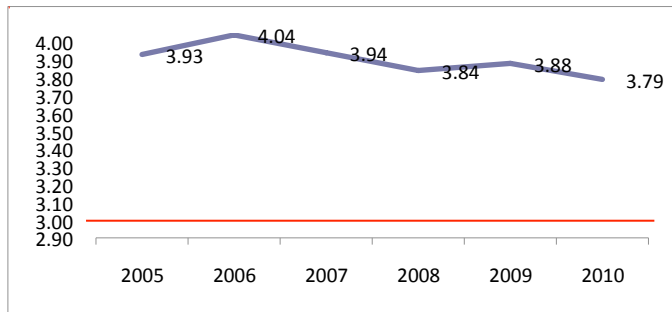
FACULTY

Female Faculty: % of FT, Fall



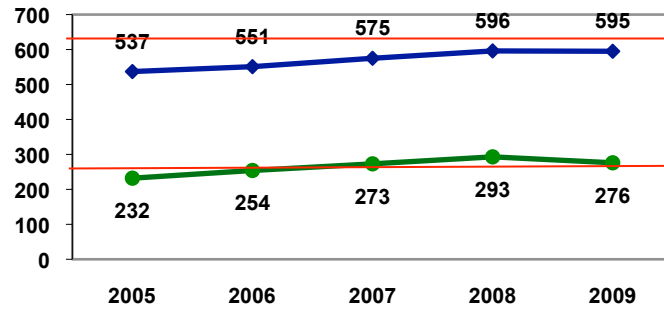
ENROLLMENT

Ratio of UG to GRAD Enrollments



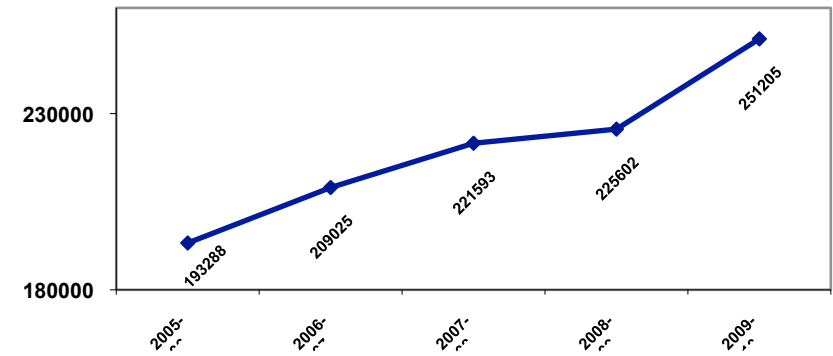
FACULTY

Full-Time and Part-Time



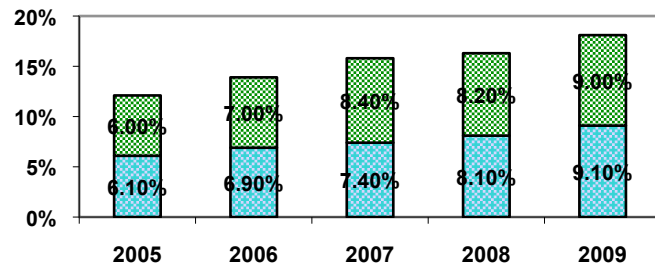
FINANCE

Total Allocation (\$1,000s, FY)



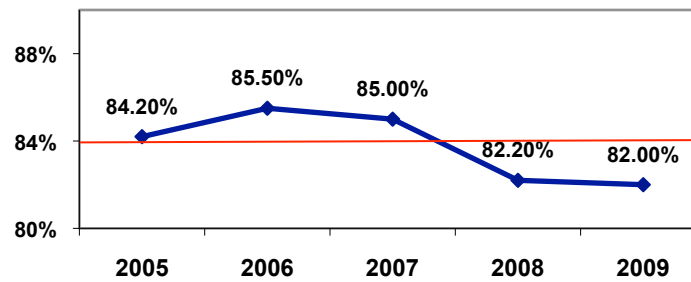
ENROLLMENT

% of Matric UG Out of State -
International and Domestic



FACULTY

% Tenure Track Faculty



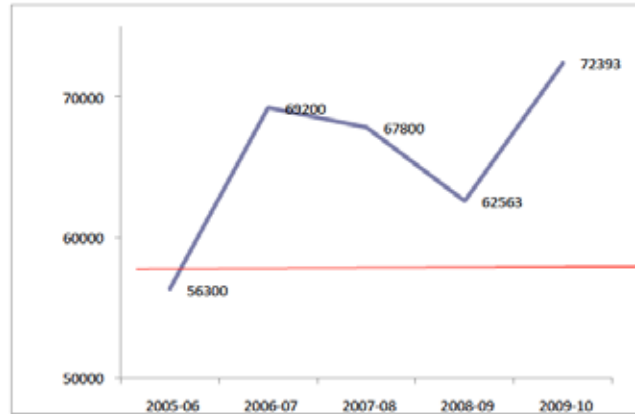
FINANCE

State Appropriations by Type -
Tuition and BAP

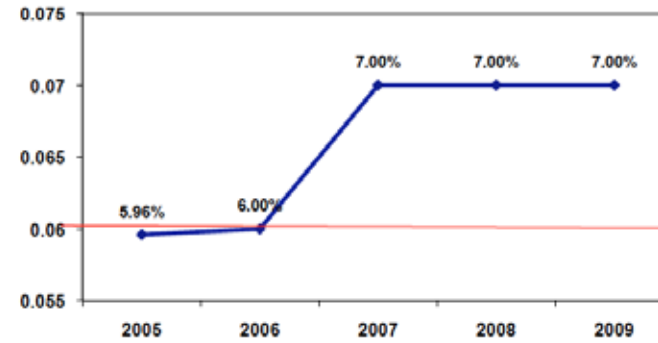


Binghamton University Dashboard— Performance Metrics

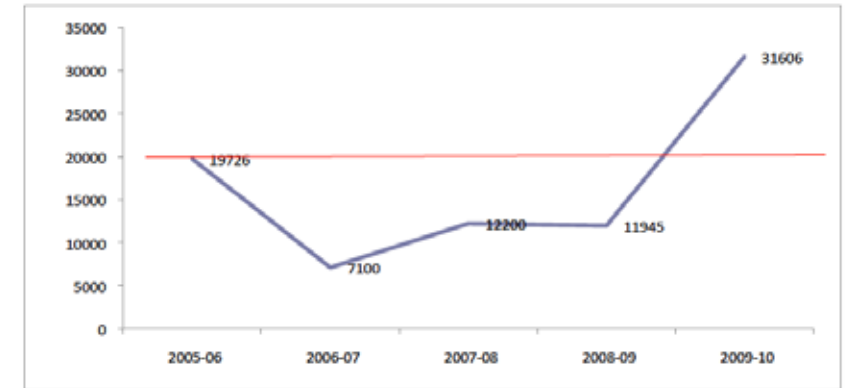
FINANCE
Value of Endowment (\$1,000s, FY)



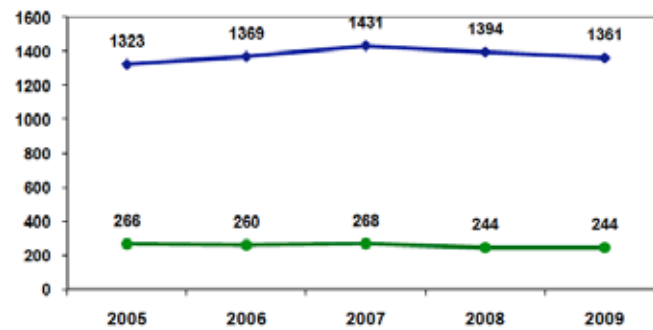
FACULTY
Underrep. Minority Faculty: % of FT, Fall



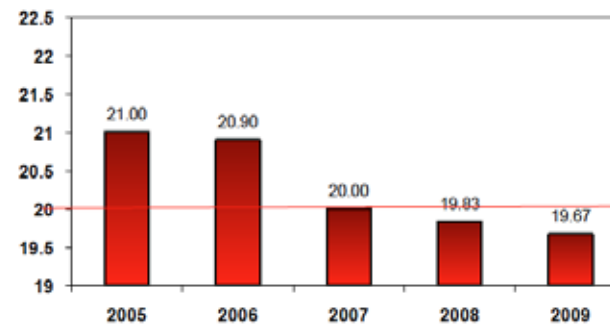
FINANCE
Total Private Support (\$1,000s, FY)



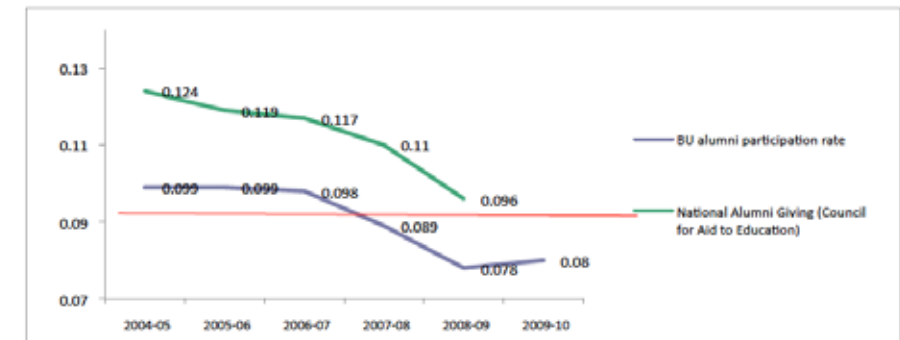
STAFF
Full-Time and Part-Time



FACULTY
Student-to-Faculty Ratio (FT+1/3 PT)



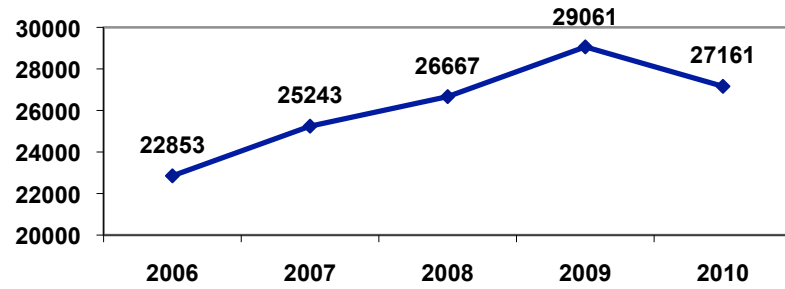
FINANCE
Alumni Participation Rate (FY)
Binghamton University Alumni Giving
National Alumni Giving (Council for Aid to Education)



Binghamton University Dashboard— Performance Metrics

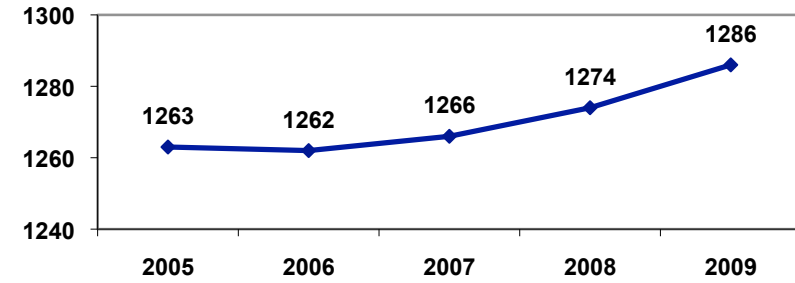
UNDERGRADUATE ADMISSIONS

Freshman Applications



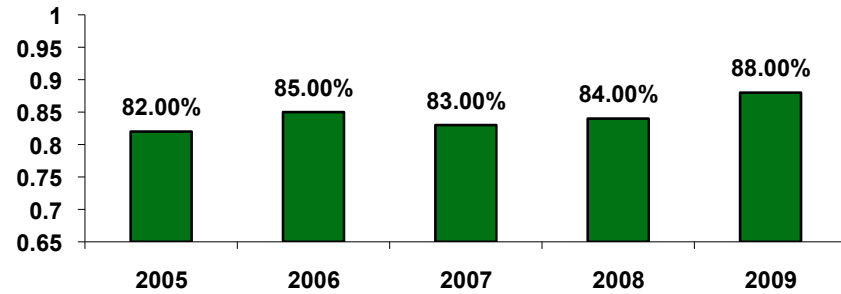
UNDERGRADUATE ADMISSIONS

Average SAT



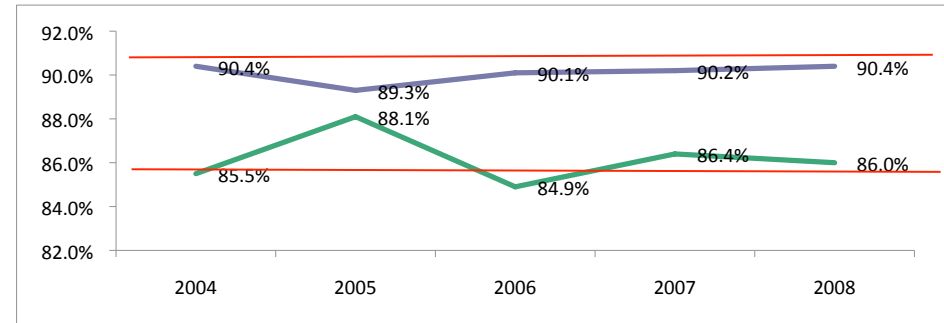
UNDERGRADUATE ADMISSIONS

% SUNY Selectivity Group 1



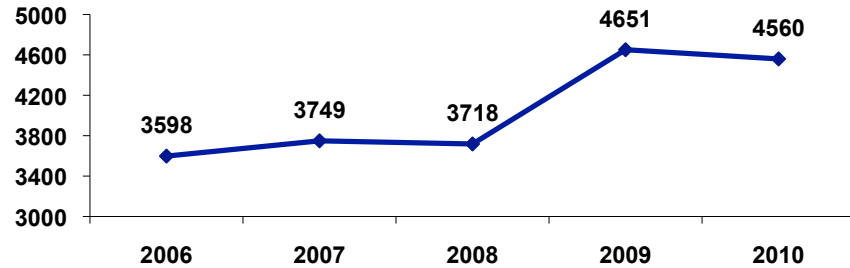
RETENTION AND GRADUATION

1st Year Retention - Frosh and Transfers



UNDERGRADUATE ADMISSIONS

Transfer Applications



RETENTION AND GRADUATION

6 Year Graduation - Frosh and Transfers

