

# RECENT WORKS

*Recent Works by the Art Studio Faculty and Staff at Harpur College*



RECENT WORKS . . . HARPUR COLLEGE FACULTY AND STAFF

*University Art Gallery*

*January 24 to February 21, 1971*

STATE UNIVERSITY OF NEW YORK AT BINGHAMTON







## FOREWORD

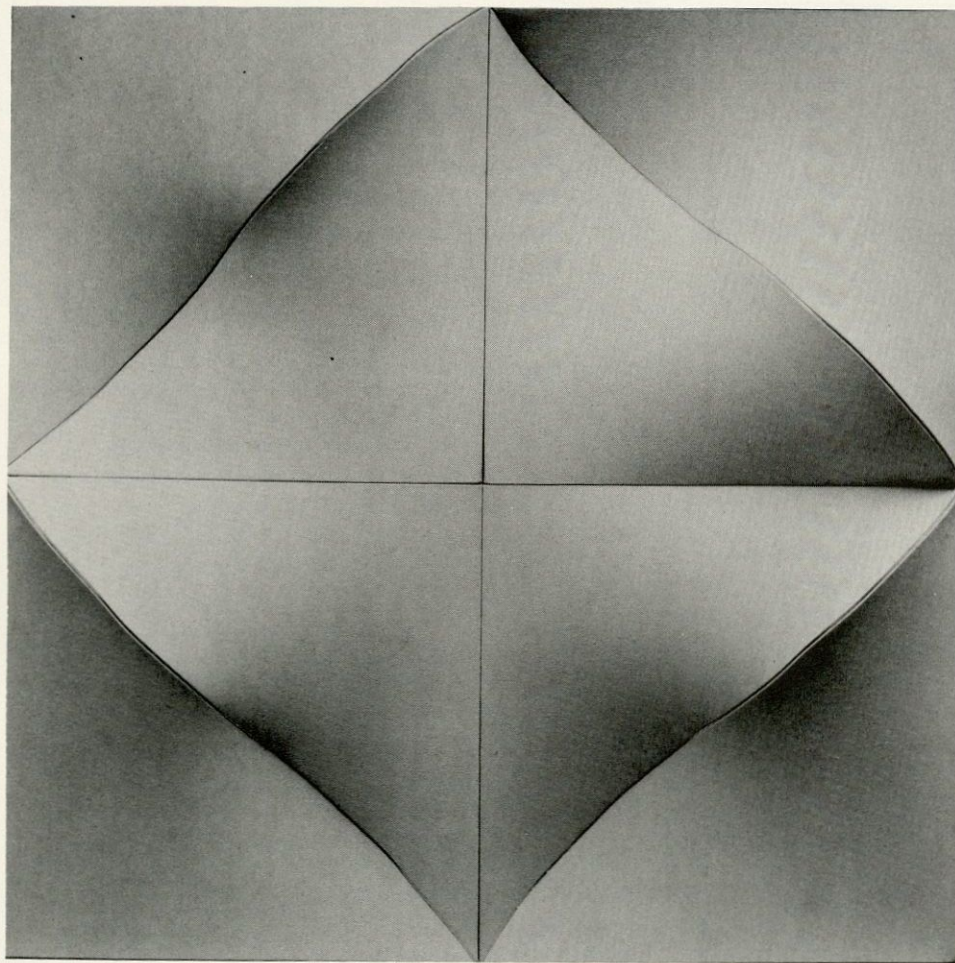
*The vitality of a Department is best expressed in the works of its members. We are fortunate and proud of the achievements of our Studio Faculty and Staff as recorded in this exhibition.*

*The everlasting search for individual expression in new and traditional media clearly characterizes the exhibited works and the versatility, excellence and maturity indicate the creative process of each artist. It is on these qualities that we judge the accomplishments of our artists-teachers and their contribution to our students.*

*The University Art Gallery, as a part of the University and the community-at-large, is pleased to show the achievements of our colleagues and hope their ideas will enrich our lives.*

*Michael Milkovich  
Director  
University Art Gallery*

DONALD BELL



"CHANGEABLE 4-UNIT" *shaped canvas 4 x 4 feet\**

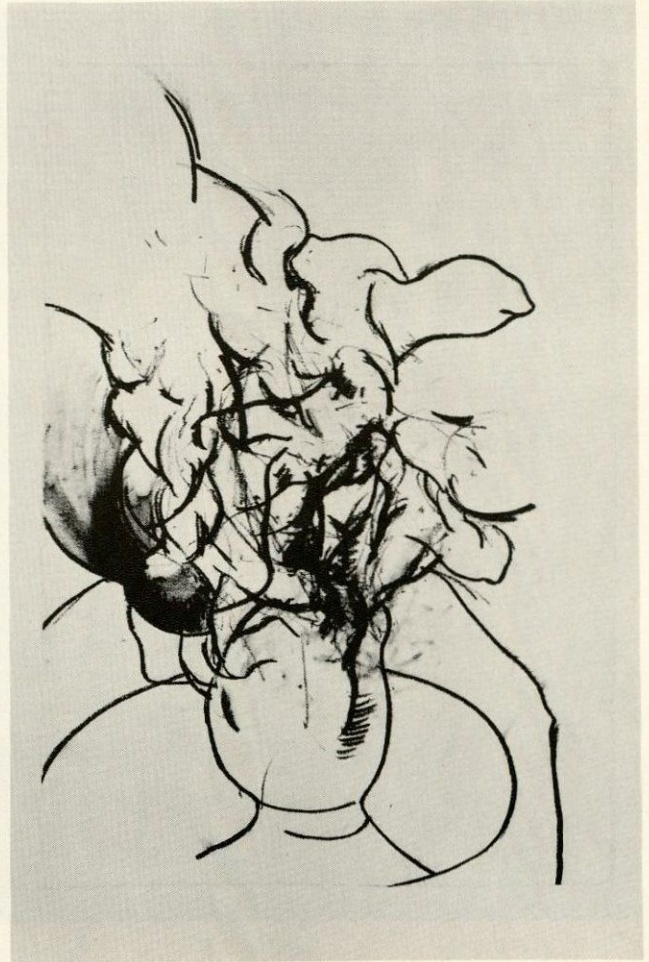
"CENTER WAVE 3-3" *shaped canvas 4 foot diameter*

"DIVISION" *shaped canvas 37 inch diameter*

"CANVAS GRADATION" *shaped canvas 24 inch diameter*



BRUCE CHANDLER

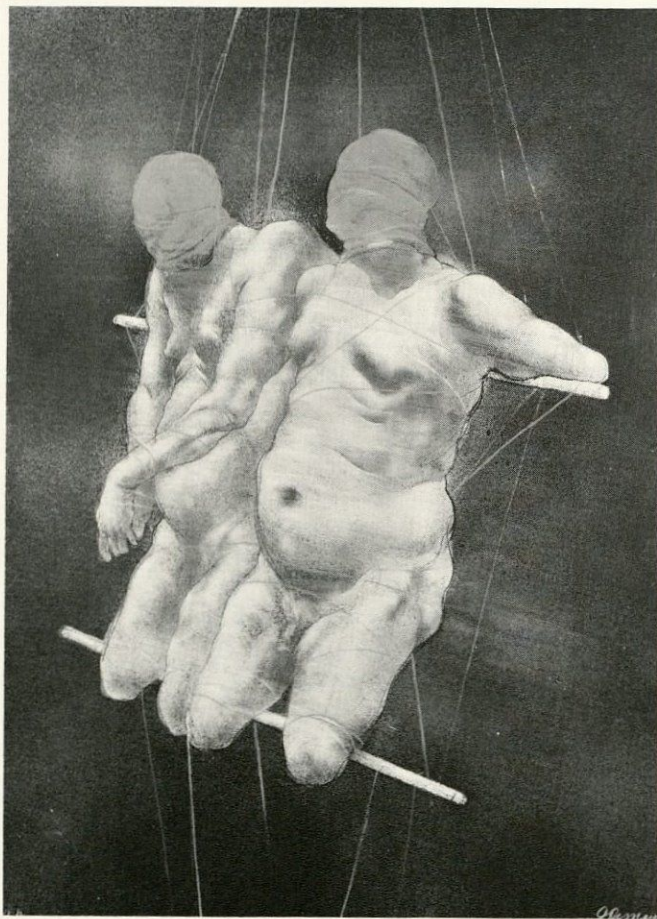


\*"POTTER DRAWING #3" charcoal drawing 23½ x 16¼ inches

"ONION" woodcut 4 x 5¼ inches

UNTITLED woodcut 7 x 7 inches

DON DEMAURO



"FIGURE CROSSED ARMS TIED" *mixed media, 1970* 15½ x 25½ inches\*

"SEED POD" *gesso, ink drawing, 1970* 25 x 35 inches

"FIGURE" *lithograph, 1970* 25 x 35 inches

"TWO FIGURES" *lithograph, 1970* 20 x 27 inches

"ELIZABETH" *pencil, gesso drawing, 1970* 26 x 40 inches



WALTER LUCKERT

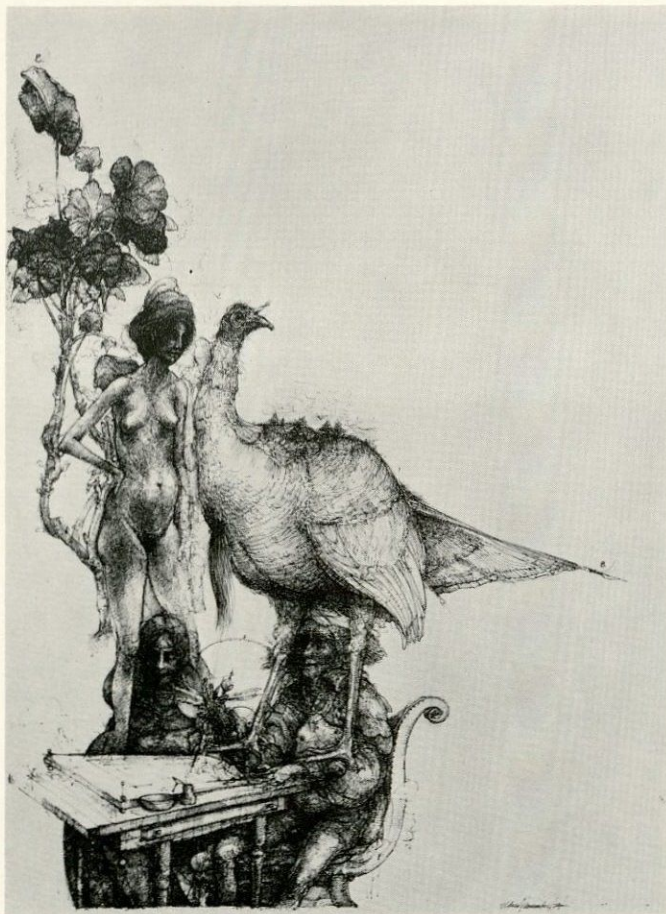


\*"FALCON" *fieldstone* 15½ high x 7½ x 10½

"SOUL STONE" *marble* 10½ high x 5½ x 16½



CHARLES ELDRED



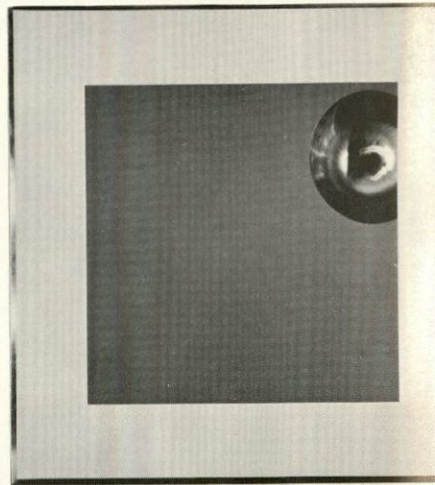
"GERANIUM I" *pen and ink drawing, 1970 30 x 22 inches\**

"GERANIUM II" *pen and ink drawing, 1970 30 x 22 inches*

"GERANIUM III" *pen and ink drawing, 1970 30 x 22 inches*

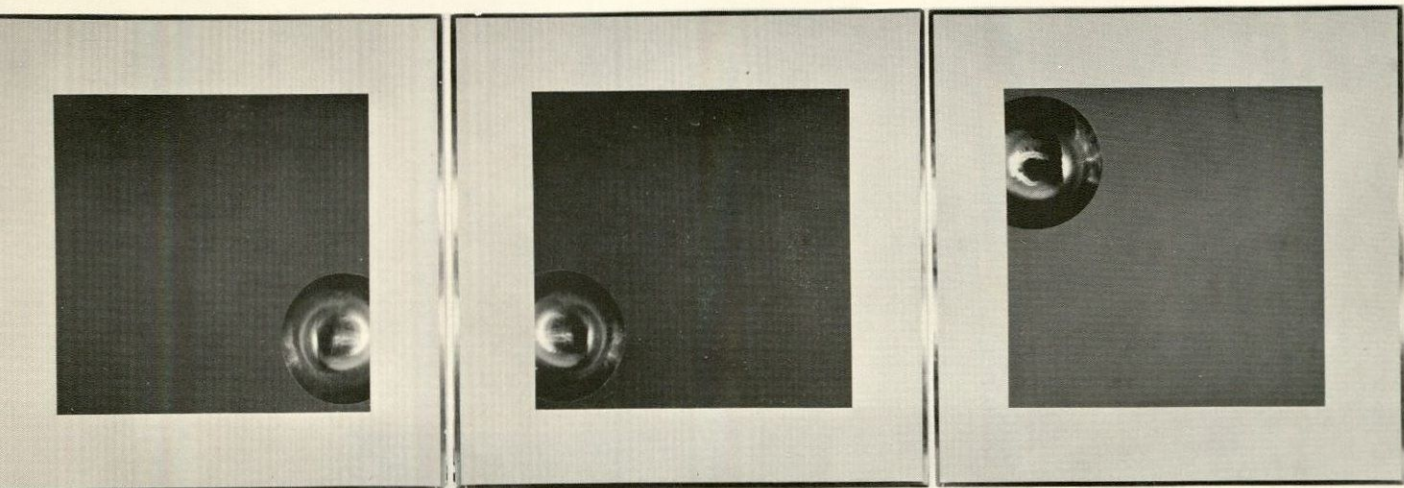
"GERANIUM IV" *pen and ink drawing, 1970 30 x 22 inches*

"GERANIUM V" *pen and ink drawing, 1970 30 x 22 inches*





FERDINAND DEVITO



\*"AMBIVELANT TRAJECTORY" *fiberglass and copper construction (four panels 3 x 3 feet)*

"SERIES NO. 2, Y + OY + O + R with W + G" *silk screen (four panels 2 x 2 feet)*



AUBREY SCHWARTZ



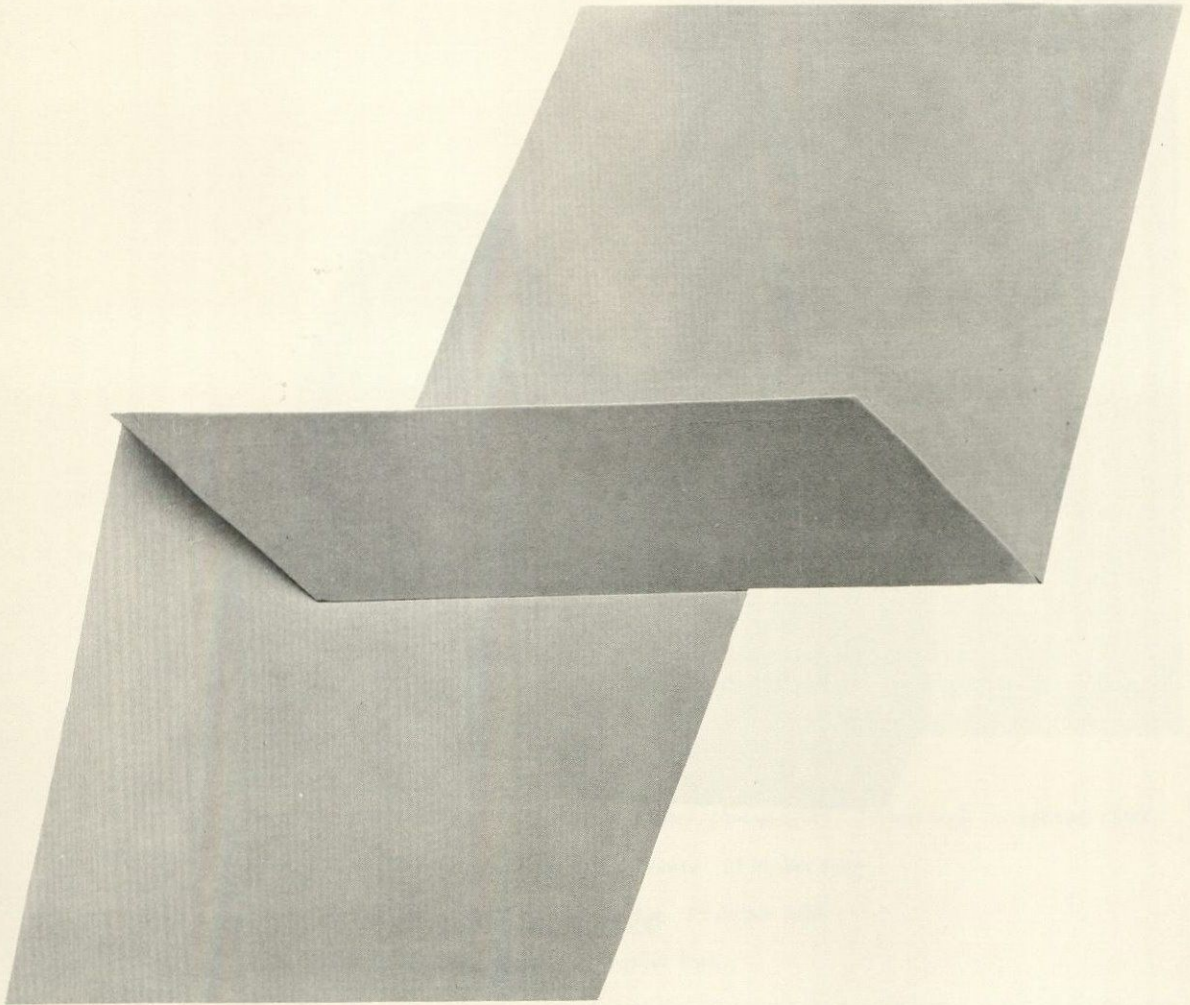
"STUDY OF LENA" *pencil drawing 12½ x 16 inches\**

"STUDY OF LENA" *etching 9 x 12 inches*

"STUDY OF LENA" *etching 4 x 5 inches*



JUDITH KATHRYN SMITH

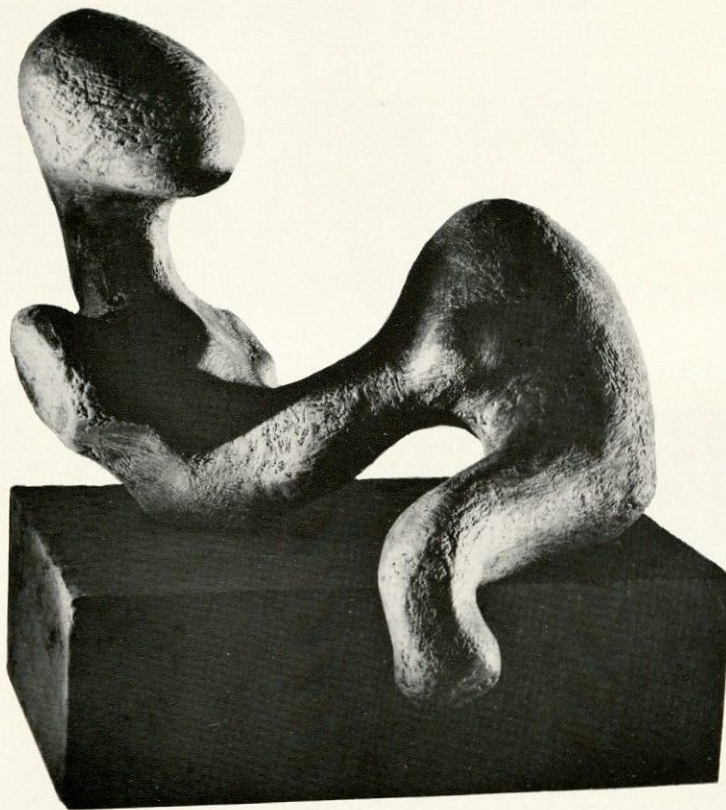


\*UNTITLED *shaped canvas* 39 x 63 inches

UNTITLED *shaped canvas* 72 x 20 inches

UNTITLED *shaped canvas* 36 x 72 inches

JAMES STARK



"SEATED FIGURE #3" *bronze, 1969*

"RECLINING FIGURE #4" *bronze, 1969\**

"LITERACY TEST" *bronze, 1969*

"ENCOUNTER" *wax model, 1970*

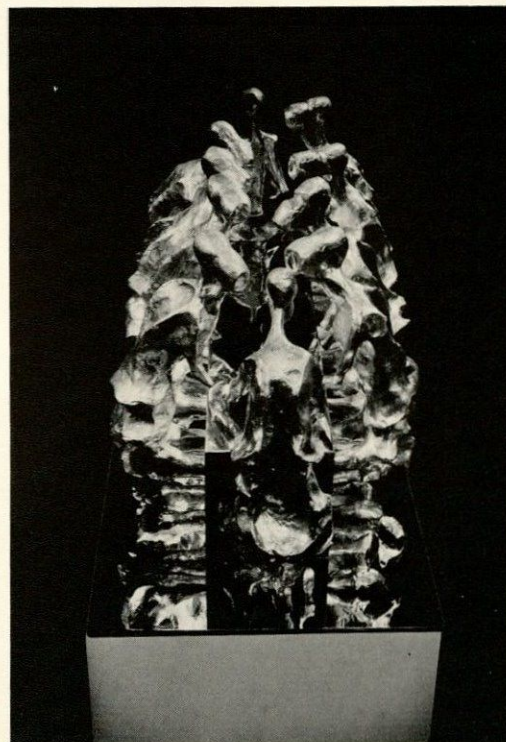
"SEATED FIGURE 4" *wax model, 1970*

"FEMALE IMAGE" *wax model, 1970*

"RECLINING FIGURE #5" *wax model, 1970*



ED WILSON



MODEL, JFK MONUMENT *wood, plaster, photography 10 feet high completed 1969*

FIGURE STUDY—HORIZONTAL *bronze 15 inches long*

FIGURE STUDY—VERTICAL *bronze 14 inches high*

LANDSCAPE FORM *bronze 14 inches high*

\*BOARD OF DIRECTORS *bronze and chrome plated steel 16" wide x 34" long x 16" high*

MODEL FOR SECOND GENESIS, PARTS I & II *30 inches wide x 59 inches long*

SECOND GENESIS, PART I (*In progress*) *aluminum and fiberglass 7'6" high x 16'8" long*

RIFFS *bronze Varying Sizes*



## BIOGRAPHICAL INFORMATION & EXHIBITIONS FROM 1966

### DONALD BELL

*Born in 1935 in Albion, Indiana*

*A.B., 1961, Indiana University*

*M.F.A., 1965, Indiana University*

#### EXHIBITIONS:

*Vision 65, University of Southern Illinois, Carbondale, Illinois*

*1966:*

*Aspen Design Conference, Aspen, Colorado.*

*1967:*

*Typographers Inc., Indianapolis, Indiana/ Midstates Exhibition, Evansville, Indiana.*

*1969:*

*Annual Faculty Exhibition, State University of New York, Albany, New York/ Two-Man Show, State University of New York at Binghamton, University Art Gallery, Binghamton, New York.*

*1969-70:*

*S.U.N.Y. Faculty Traveling Exhibition, State University of New York.*

*1970:*

*Four Abstract Painters, Wilson Memorial Hospital, Two Rivers Gallery, Johnson City, New York/ Regional Art Exhibit, Everson Museum, Syracuse, N. Y./ Fourth Annual Spring Show, Erie Art Center, Erie Pa./ Appalachian Corridors, Exhibit No. II, Charleston, West Virginia/ Regional, Everhart Museum, Scranton, Pa.*

### BRUCE CHANDLER

*Born in 1945 in Plainfield, New Jersey*

*B.F.A., School of Fine and Applied Arts, Boston University.*

### DON DEMAURO

*Born in 1936 in Mt. Vernon, New York*

*Choninard Art Institute, Los Angeles*

### FERDINAND DEVITO

*Born in 1926 in Trenton, New Jersey*

*B.F.A., 1954, Cleveland Institute of Art*

*M.F.A., 1956, Yale University*

#### EXHIBITIONS:

*1964:*

*The Contemporaries Art Gallery, New York City/ Riverside Museum, New York City.*

*1965:*

*One Man Show, East Hampton Gallery, New York City.*

*1966:*

*James David Gallery, Coral Gables, Florida/ University of South Florida, Tampa, Florida/ Fordham University, New York City/ "Color/Motion" Fine Arts Foundation, Hartford, Connecticut; "Optics and Kinetics" Ohio University, Athens, Ohio/ "Emphasis Optics" University of Massachusetts, Amherst, Mass./ Sixteenth Annual New England Exhibition, Silvermine Guild of Artists, Silvermine, Connecticut/ "Purity and Vision" South Hampton College, South Hampton, New York/ "Color/Motion" Ohio State University, Cincinnati, Ohio/ Des Moines Art Center, Des Moines, Iowa/ Kent State University, Kent, Ohio/ Zanesville Art Institute, Zanesville, Ohio/ "Color/Motion" Brookhaven National Laboratory, Upton, New York.*

*1967:*

*One Man Show, Mickelson Art Gallery, Washington, D. C./ "Optical Illusion and Color Motion" Albright College, Reading, Pa./ Louisiana Art Gallery.*

*1968:*

*Colgate College Art Gallery/ "Square in Painting" American Federation of*



*Arts, Traveling Exhibition/ Retrospective, State University of New York at Binghamton/ Ithaca College, Ithaca, New York.*

1969-70:

*One Man Show, Cortland College/ Everson Museum, Syracuse, New York/ Wilson Memorial Hospital/ "How a Silk Screen Is Made" American Federation of Arts, Traveling Exhibition/ Mickelson Gallery, Washington, D.C./ Cleveland Institute of Art.*

#### CHARLES ELDRED

*Born in 1938 in Binghamton, New York*

*B.A., Harpur College*

#### WALTER LUCKERT

*Born in New York City, New York in 1910*

*Attended Public School No. 3 in the Bronx, New York*

*Also graduated from Stuyvesant High School in New York City, New York, private lessons in Art in New York City and also in Binghamton, New York.*

#### AUBREY SCHWARTZ

*Born in 1928 in Brooklyn, New York*

#### JUDITH KATHRYN SMITH

*Born in 1942 in Red Bank, New Jersey  
B.A., Hood College, Frederick, Maryland*

*M.F.A., University of North Carolina, Chapel Hill, North Carolina*

##### EXHIBITIONS:

1967:

*One Man Show, Wesley Foundation, Chapel Hill, North Carolina/ North*

*Carolina Artists Annual/ Spring Mills and Annual Exhibition, Lancaster, South Carolina (Second Prize)/ 12th Annual El Paso National Exhibition/ 3rd Annual Piedmont Graphics Exhibition, Mint Museum, Charlotte, North Carolina/ 10th Southern Contemporary Art Exhibition, Chicago (Purchase Award)*

1968:

*One Man Show, North Carolina College, Durham, North Carolina/ North Carolina Artists Annual/ "University Artists" Ithaca College Museum, Ithaca, New York.*

1969:

*Two Man Show, State University of New York at Binghamton/ State University of New York Fine Arts Convocation, Albany, New York.*

#### JAMES STARK

*Born in 1943 in Gouverneur, New York*

*A.B., 1967, Western Michigan University*

##### EXHIBITIONS:

1969:

*"Twenty Michigan Sculptors" Michigan Council for the Arts, traveling exhibition.*

#### ED WILSON

*Born in 1925 in Baltimore, Maryland  
Military Service—Georgia, Mississippi, China-Burma-India 1943-46*

*Attended University of Iowa, Iowa City, Iowa, 1946-51*

*Began teaching Art at North Carolina College, Durham, North Carolina in 1951. Group Exhibition, University of Iowa.*



#### EXHIBITIONS:

1966:

*Yaddo/One Man Exhibition, S.U.N.Y. at Binghamton/ Group Exhibition, UCLA Galleries, Los Angeles, California/ Group Exhibition, University of California, Davis; References: Topic Magazine, Issue No. 5, United States Information Agency, Washington, D. C., p. 31 photograph/ Commissions for JFK Monument and Park Design, Binghamton, New York, Accepted June/ Fellowship, State University of New York, Sculpture.*

1967:

*Group Exhibition, Fine Arts Gallery of San Diego, California/ Group Exhibition, Oakland Art Museum, California/ Group Exhibition, Colgate University, Hamilton, New York.*

1968:

*Appointed Chairman, Department of Art and Art History, S.U.N.Y. at Binghamton/ 31st Annual, Artists of Central, New York, Munson-Williams-Proctor Museum, Utica, New York/ Group Exhibition, Ithaca College, Ithaca, New York/ Group Exhibition, Minneapolis Institute of the Arts/ Article published, "Statement," Arts in Society, Fall-Winter, University of Wisconsin, pp. 411-17/ Fellowship, State University of New York, Sculpture.*

1969:

*Group Exhibition, High Museum, Atlanta, Georgia/ Group Exhibition, Flint Institute of the Arts, Flint, Michigan/ Group Exhibition, Everson Museum, Syracuse, New York/ Group Exhibition, IBM Gallery, New York City/ Group Exhibition, Rhode Island School of Design, Providence, Rhode Island/ Group Exhibition, Memorial Art Gallery, Rochester, New York/*

*Group Exhibition, San Francisco Museum of Art/ Commissions for JFK Monument and Park, completed, October/ Article published, "CAA and Negro Colleges," Art Journal, Winter, XXVIII/2, p. 228/ Reference: Fine, E. H., "The Afro-American Artist: A Search for Identity," Art Journal, Fall, XXIX/1, p. 35/ Group Exhibition, Civic Center Museum, Philadelphia/ Artist-in-Residence, Humanities Program, Western Michigan University, Kalamazoo, Michigan, March.*

1970:

*Group Exhibition, Contemporary Arts Association, Houston, Texas/ Group Exhibition, New Jersey State Museum, Trenton, New Jersey/ Group Exhibition, Roberson Center for the Arts, Binghamton, N. Y./ Appointed to Board of Directors, College Art Association of America, April/ Accepted Sculpture Commission from the City of Baltimore, June/ One Man Exhibition, Selected Works, Harlem School of the Arts, New York City, October/ Group Exhibition, University of California, Santa Barbara/ Accepted Sculpture Commission by S.U.N.Y. at Binghamton, Senior Class.*