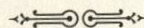
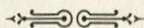


Rosamond Purcell, Egg of a Small Bird atop Small Ostrich Egg, 1995, accompanied Stephen Jay Gould's "Big Birds: If you think the small fellows of the forest are prototypical, think again," The Sciences, November/December 1996.



BINGHAMTON UNIVERSITY ART MUSEUM

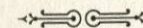
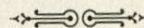
State University of New York
September 8-October 13, 2000
Tuesday-Sunday: 1-4 p.m.
Closed Mondays

NEW YORK ACADEMY OF SCIENCES

2 East 63rd St. (at Fifth Avenue)
New York, New York
October 20, 2000-January 5, 2001
Monday-Friday: 10 a.m.-5p.m.
Closed weekends

BINGHAMTON
UNIVERSITY

State University of New York

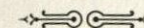


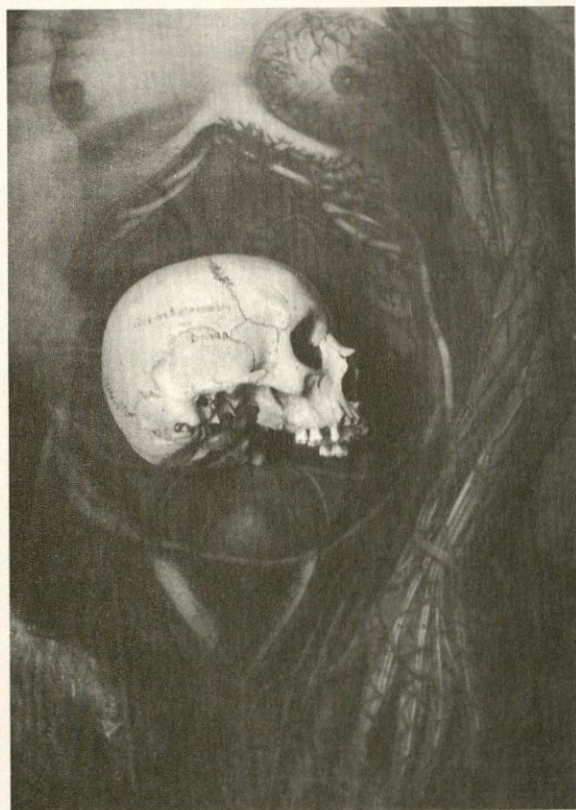
CROSSING OVER

WHERE ART AND SCIENCE MEET



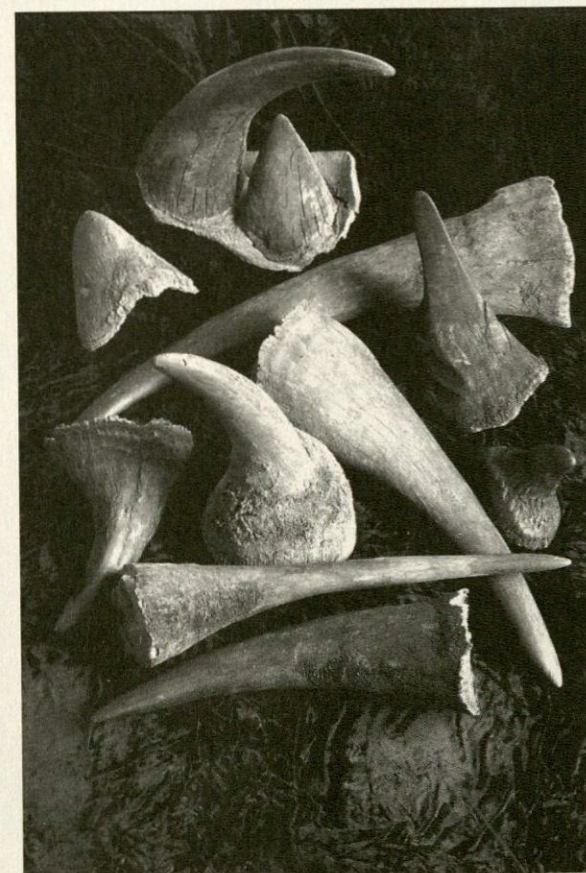
Rosamond Purcell, Ammonite on Jade, 1990, accompanied Stephen Jay Gould's "Scales of Destruction: No justice, only fair chance, attends the catastrophes that clear the way for new life," The Sciences, May/June 1990.





Rosamond Purcell, *Skull*, 1993, accompanied Stephen Jay Gould's "Inside Dimensions: Art and science in the service of anatomy," *The Sciences*, January/February 1995.

This exhibition of 20 photographs of subjects in natural history by Rosamond Wolff Purcell is presented on the occasion of the publication of a book of essays on the sciences by Stephen Jay Gould, together with Purcell's photographs. The images and texts are from "On Common Ground," their regular series in *The Sciences* magazine, a publication of the New York Academy of Sciences. Their collaboration is an intriguing union of art and science in which topics in the natural sciences are imagined from a visual perspective.



Rosamond Purcell, *Collection of Rhinoceros Horns*, n.d., accompanied Stephen Jay Gould's "Preposterous: What has happened to the rhinoceros is as hard to fathom as the beast itself," *The Sciences*, July/August 1996.