

Faculty Exhibition 2000



UNIVERSITY ART MUSEUM
BINGHAMTON UNIVERSITY
JANUARY 25 - FEBRUARY 20

RECEPTION 7 P.M. - FRIDAY, JANUARY 28

From left to right: John Thomson, Onyile Onyile, Don DeMauro, Kathryn Niles, Loring Bixler, Ronald Gonzalez, David Shaprio, George Perez Otra, Linda Sokolowski, James Bohari, Costa Sakellariou, Jim Stark

The faculty exhibition is always a milestone of our academic year. It's the one time when we see the latest work of our colleagues, and more important, when others, especially our students, can get some idea of what we do.

This year's exhibition is particularly special for two reasons. It's the first faculty exhibit we've had in five years due mainly to extensive refurbishing of the University Art Museum. We have missed them.

And this exhibit represents something of a resurgence of the art department after some

troubled times. Over a very brief period, due to retirements and the death of Charles Eldred, we lost half the faculty. Then for several years we couldn't re-hire because of the worst New York budgets in SUNY history.

We have now gained two outstanding new full time faculty, and three first rate adjunct faculty, and there's the feeling, expressed in this catalog that we're getting back on track.

John Thomson, Chair



John Thomson
Minimal Cruising Boat



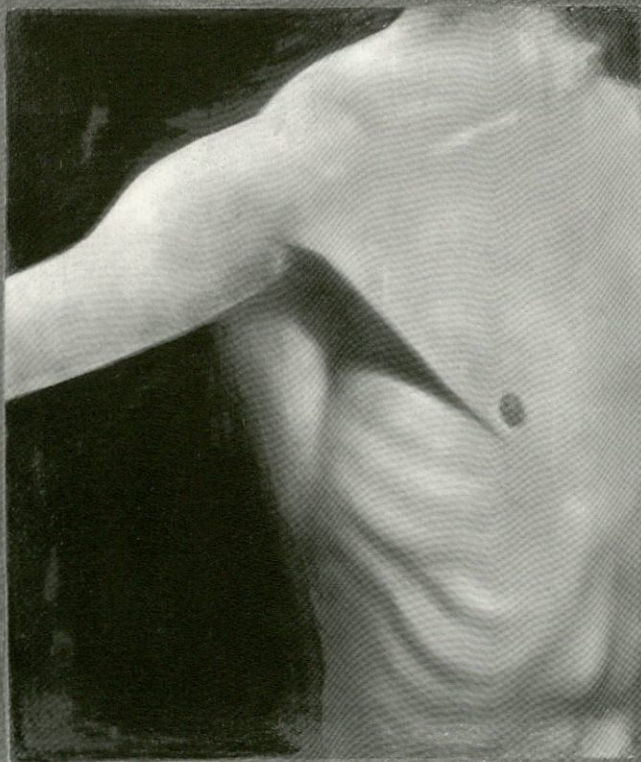
John Thomson
Minimal Cruising Boat



Onyile Onyile
Collage 32 x 40 inches

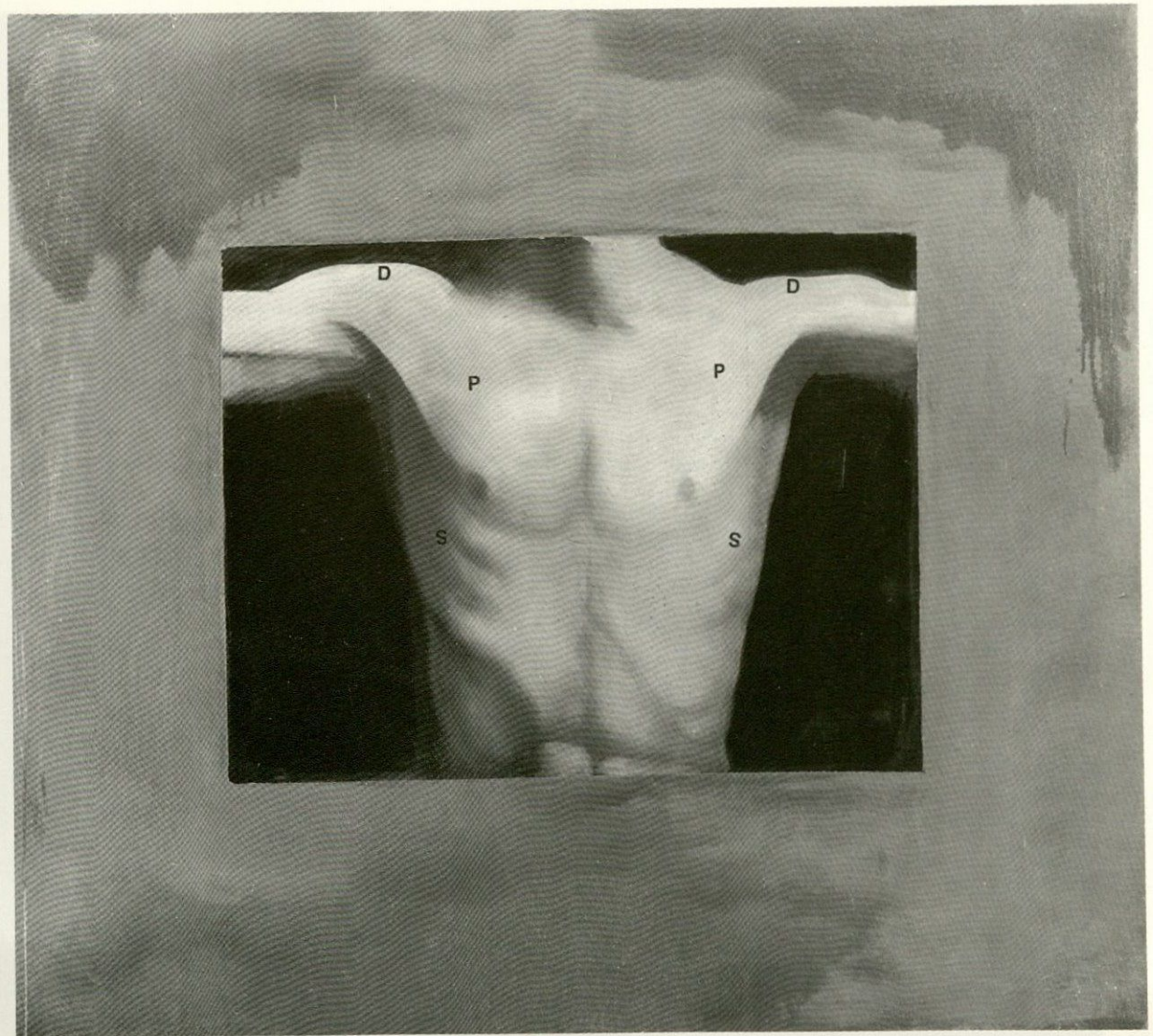


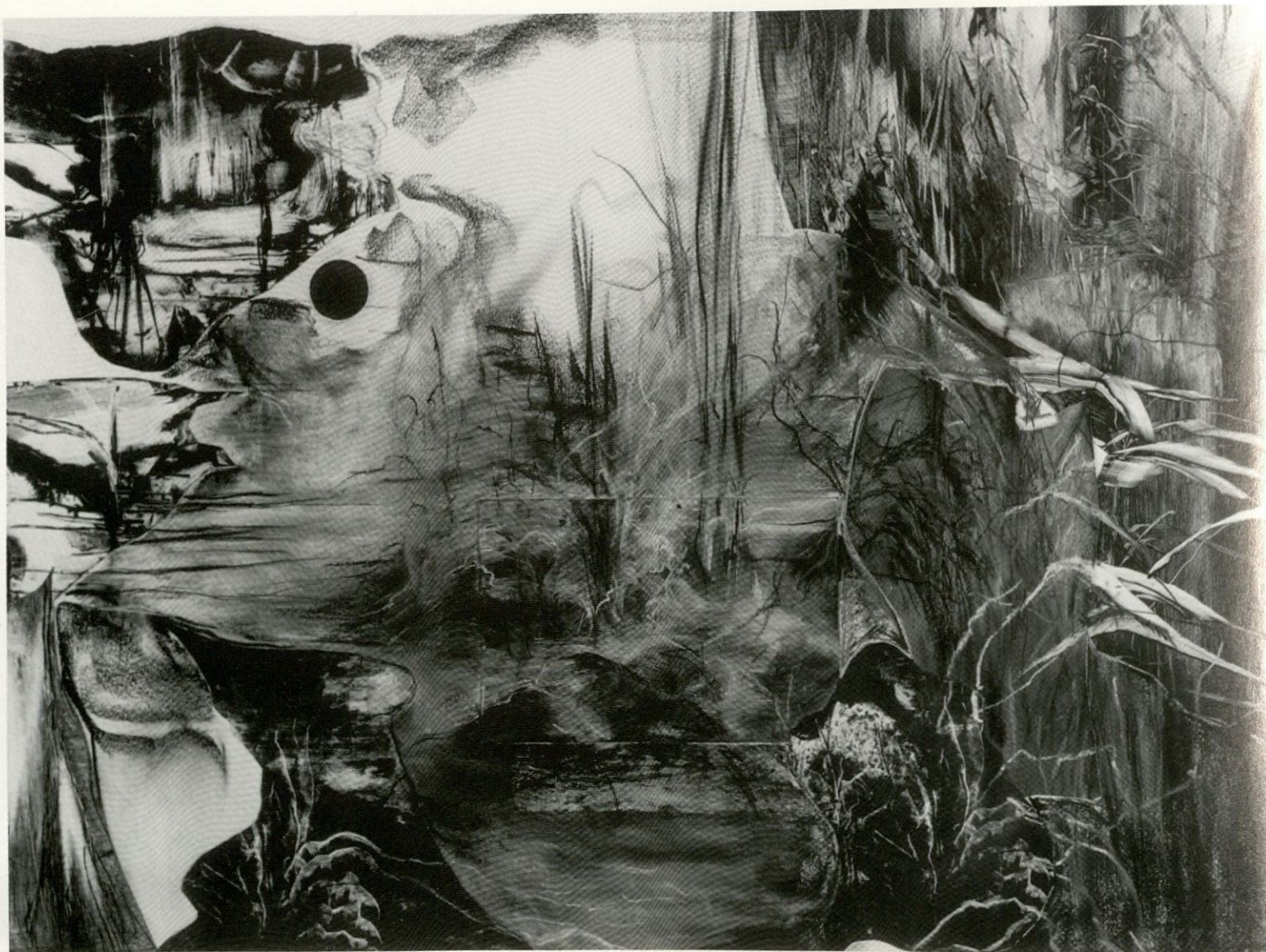
Onyile Onyile
Collage 32 x 40 inches



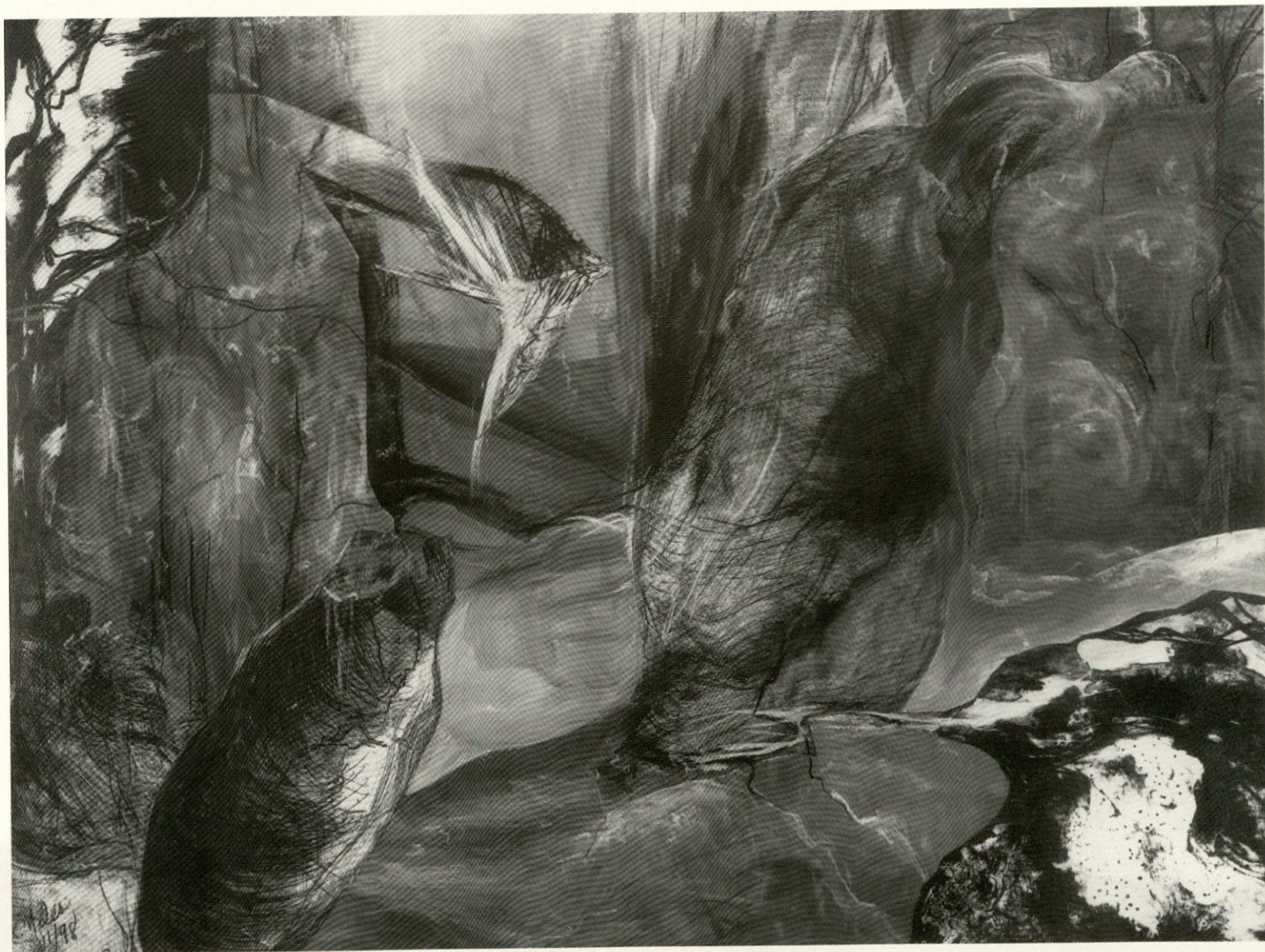
Don DeMauro
Will and Representation
(detail)
54 x 54 inches

Don DeMauro
DEUS EX MACHINA
60 x 54 inches



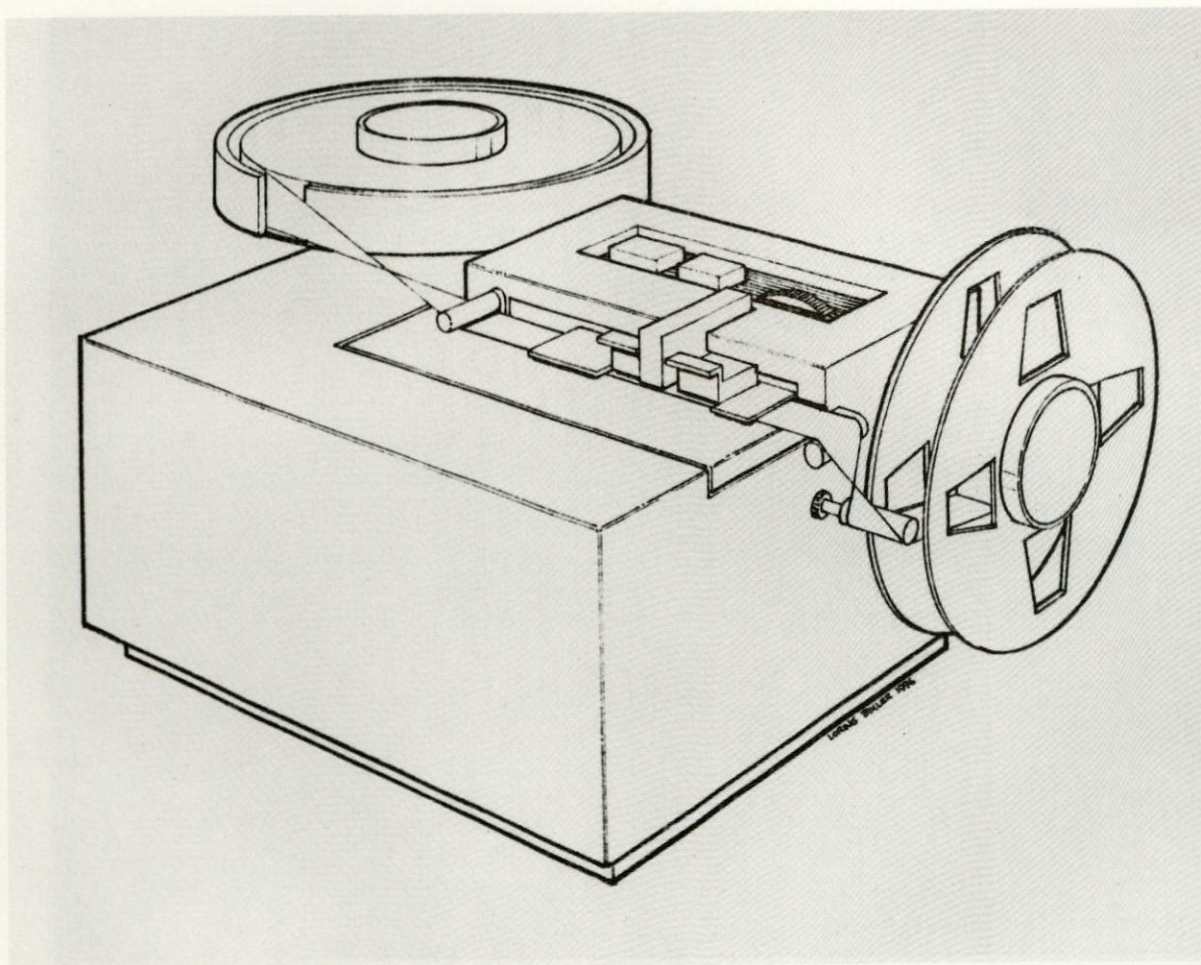


Kathryn Niles
Natural Element, collage on paper 24 x 32 inches, 1998



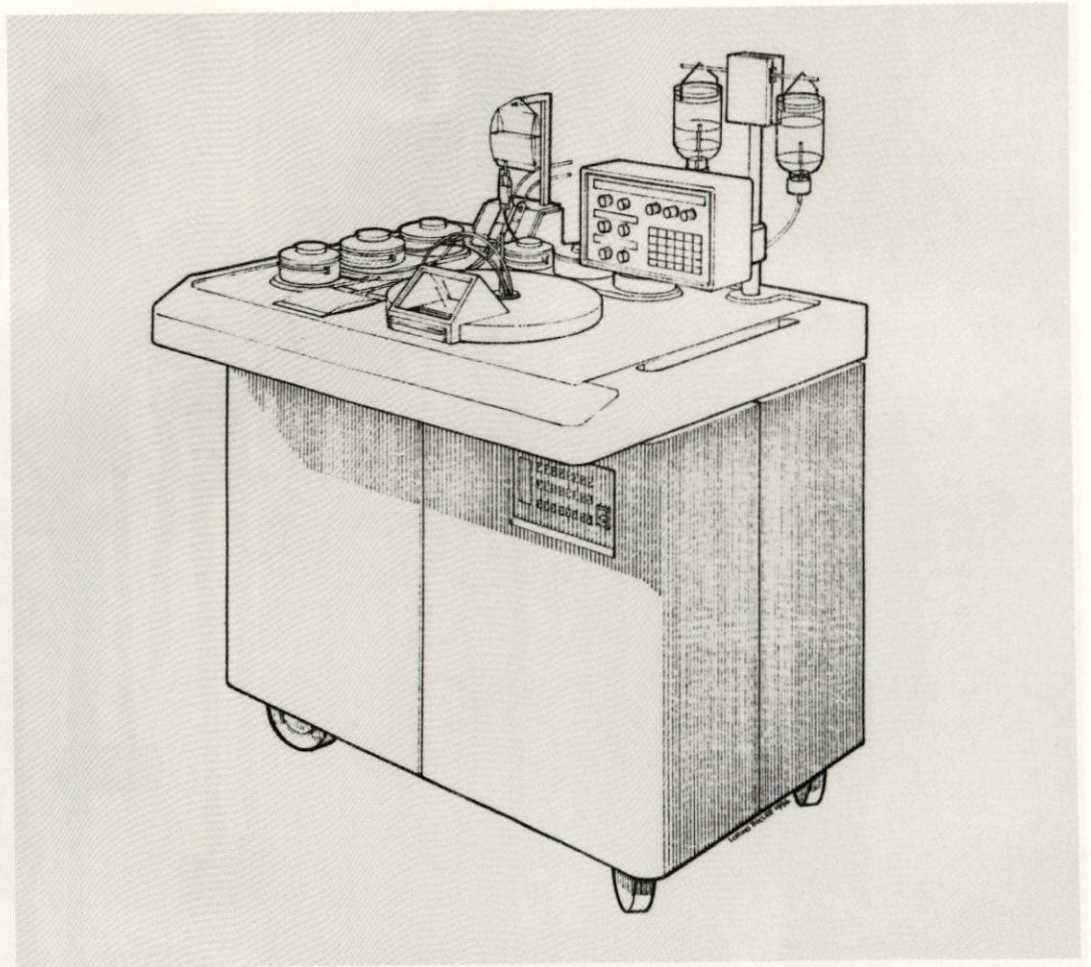
Kathryn Niles

Dark Forest, collage on paper 24 x 32 inches, 1998



Loring Bixler
Untitled

Loring Bixler
Untitled

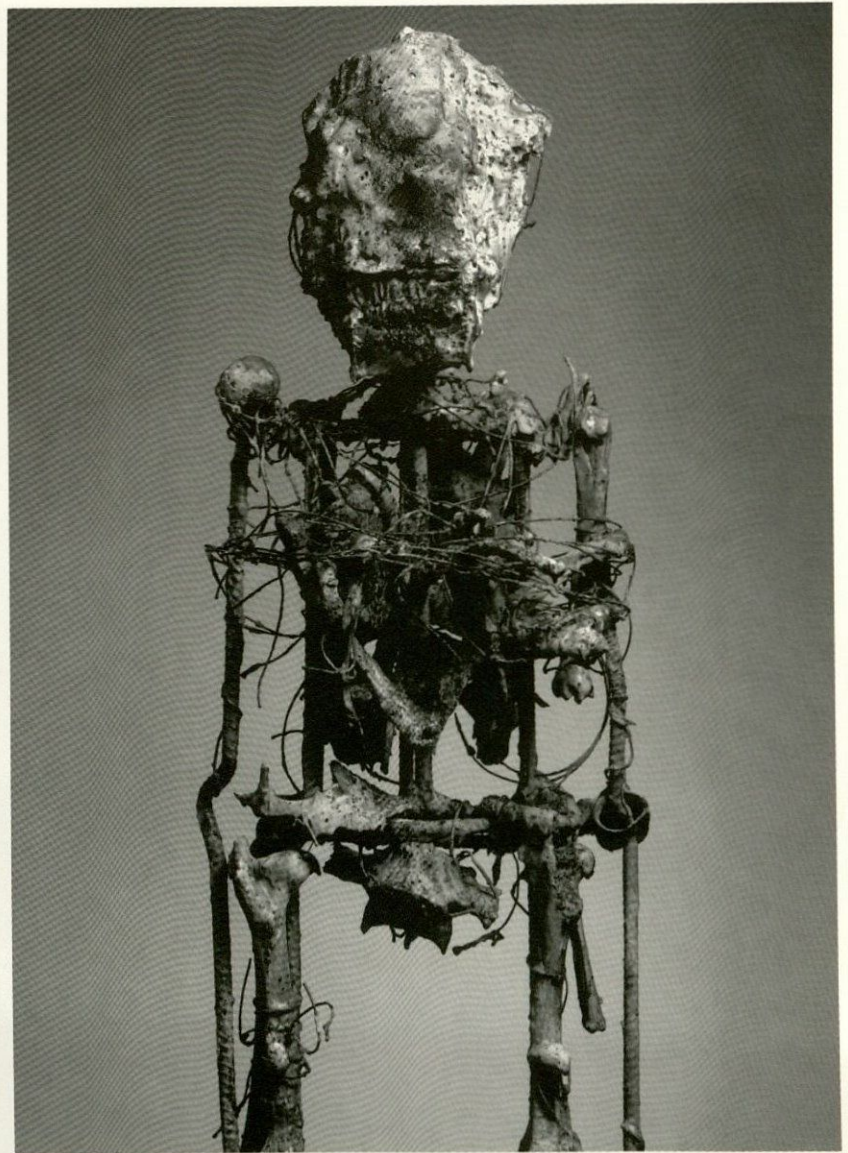




Ronald Gonzalez

Studies for tunnels, plaster, tar, leaf compost, carbon over welded steel, 1997

Ronald Gonzalez
Study for Catacomb,
Figures of rusted plaster, animal
bones and teeth, wax, wire,
carbon over welded steel,
1998

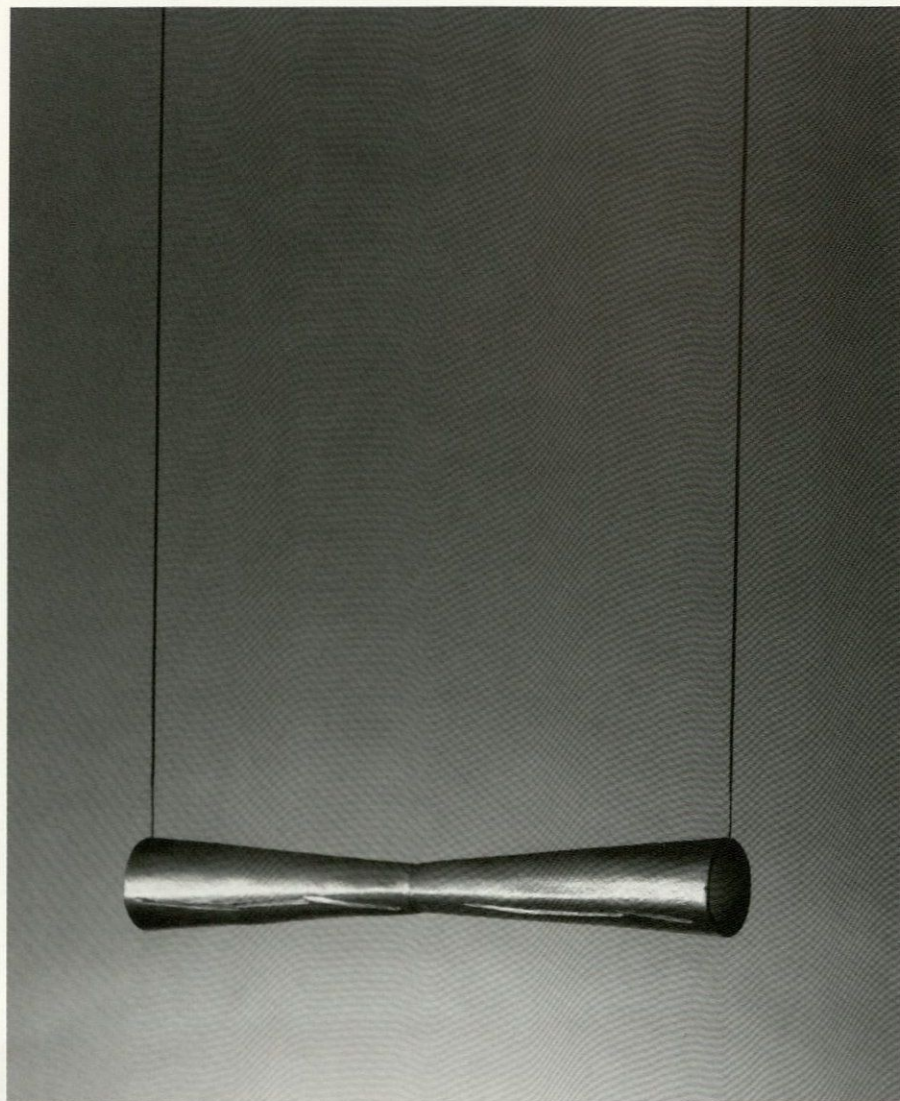




David Shapiro
Self Portrait #3, oil on canvas, 11 x 14 inches, 1999



David Shapiro
Self Portrait #4, oil on canvas, 16 x 20 inches, 1999



George Perez Otra
Maquette, aluminum,
wall sconce



George Perez Otra

Eclipse, bronze,
wax patterns for
end table lamps





Linda Sokolowski
Plowed Field in Spain, drawing, conte and oil wash 29 x 42 inches



Linda Sokolowski
Winter Swamp, monotype, 22 x 30 inches



James Bohari

Young Surfer
oil on canvas,
54 x 60 inches
1992



Costa Sakellariou

Women Mourning, Istanbul, photograph, 1994



Jim Stark

Studies for series

Drawings from the Archive - Markings,
bronze and bronze with iron, 26 to 28 inches

Jim Stark
Study for series
Drawings from the Archive - Markings,
bronze, 22 x 11 inches



University Art Museum

Lynn Gamwell, Director

Jacqueline Hogan, Assistant Director

Silvia Ivanova, Registrar

Jennifer Nyman, Technical Coordinator

Chris Focht, Photography

Museum hours:

Tuesday - Sunday

1 - 4 pm

Closed on holidays