

# FACULTY SENATE COMMITTEE ANNUAL REPORTS

2014-2015

## Standing Committees

Budget Review  
Bylaws Review  
Convocations  
EOP Advisory  
Educational Policy and Priorities  
Intercollegiate Athletics  
University Undergraduate Curriculum

## Joint Committees

Academic Computing and Educational Technology  
Committee for the University Environment

## Other

Committee on Committees  
Evaluation Coordinating Committee  
Faculty Athletics Representative  
Intercollegiate Athletics Board

Note: Library and Professional Standards will be reviewed at the December Senate meeting.

## **Faculty Senate Budget Review Committee 2014-2015 Annual Report**

### **Introduction:**

The Faculty Senate Budget Review Committee (FSBRC) met nearly every other week during the fall semester, weekly during January and February, and several more times to finish the semester. In addition, a couple of meetings in May and June extended beyond the period of the academic year as discussions of a new budget process continued. Key activities pursued during the 2014-15 reporting year include reviews of operational activities by division; reviewing Annual Disbursements Report for 2013-2014; the financial situation for the current, and upcoming fiscal years; reviewing, evaluating, and making recommendations for funding for the 2014-2015 Road Map proposals; and working with the president and provost to revise the way the FSBRC receives information on the university budget.

### **University Disbursements:**

Expenditures for 2013-2014 finished in the black. The 2014-2015 budget was challenged by enrollment targets, but was on track to be balanced. Final expenditures for 2014-2015 are scheduled to be available in November-December 2015 and will be reviewed by the BRC at that time. The current 2015-2016 budget was a matter of significant discussion due to a revenue shortfall projected due to low graduate and out of state undergraduate enrollments that did not meet targets. This will be monitored closely in the next academic year.

Capital construction was reviewed in both the fall and the spring in the context of the division reorganization and new VP for operations. Typically, a new 5-year SUNY capital plan would have been approved by the state legislature. However, the new capital construction plan is only being allocated annually and the total funds available (~11M for Binghamton) will be a challenge for next year. Special construction projects continue to make good progress including the Pharmacy School, Incubator, and Smart Energy building. A great deal of effort has focused on the REDC efforts as a potential source of additional capital funds.

### **Road Map Proposals:**

Most of the non-allocated funds, which in budgets prior to 2012 were distributed by complex negotiations between the deans, the vice presidents, and the president were instead applied to Road-Map projects. The road map process continued in 14-15 with the active involvement of the BRC. The faculty senate budget review committee met during February and March to provide input to the President, Provost, and Road Map Steering Committee related to the Road Map proposals submitted by the campus in December 2014 for funding in the 2015-16 cycle. The review included the Road Map proposal narratives, rankings of the proposals from the Vice Presidents and Senior Directors, and written comments regarding the rankings. We also met with each of the VPs and Senior Directors to learn more about their fiscal operations and highest priority rankings. Input was provided to the President and Provost regarding the BRC rankings in March and then again after the final 27 proposals was identified by the steering committee.

### **Future Administration – FSBRC Co-operation:**

The original charge of the FSBRC was to “review on a regular basis all institutional budgets *prior* to the presentation of such budgets to SUNY central, and *prior* to implementing campus budgetary policies” and “to report its findings to the Executive Committee of the Faculty Senate”. The intent was to “have faculty involvement in budgetary planning *prior* to policy or budgetary implementation, including midstream budget changes; to reflect, in their recommendations on the budget, the academic priorities and policies established by the Faculty Senate; to seek advice as necessary from other faculty with expertise in the budgetary process; and to report periodically on the budget process to the Faculty Senate”. (Faculty Bylaws)

The ideals of shared faculty-administration governance with regards to the budgetary process, as outlined in the Faculty Bylaws, is not the way the budgetary process has operated for many years. Our budget no longer goes through a formal review process at SUNY central, and as a result the FSBRC has not had an opportunity to formally review the budget, before it is adopted by the campus administration. During the 2014-2015 academic year, a unified process for BRC discussions with senior administration was not achieved.

During meetings in June, it was agreed that a time line should be established to provide for regular review of budgets during the planning process. This would include a both the review of the 3 years including the past, current, and next year’s budgets. The original goal proposed by the BRC was that this should include 2 additional years to give a total of a 5 year running budget. While there are challenges to doing this, especially with unit reorganization, this ideal is still the best way to monitor the long term strategic and budget allocation decisions being made for the campus. A tentatively agreed upon time line for multiple budget reviews is shown below. This and the revision of the instrument to be reviewed will continue to as a focus of the BRC in 2015-2016.

### Tentative Budget Review Agenda

#### September

- Establish BRC
- Roadmap Call for proposals
- BRC academic year planning

#### October

- Prior Year Budget update from summer
- Enrollment update

#### November

- Academic Affairs Report
- VP Operations Report
- Expenditures Report

#### December

- Roadmap Proposals due

#### January

- Receive Division priorities For Roadmap

Meet with VP's regarding priority rankings/Budget Challenges  
 February  
 Meet with VP's regarding priority rankings/Budget Challenges  
 March  
 Roadmap input to President (3/18/16)  
 Preliminary Budget for next year  
 April  
 Construction Report  
 May  
 Division Heads submit list of roadmap projects for BRC Consideration  
 BRC provides final recommendations to President and steering committee (5/23/16)  
 June/July  
 Final Budget for next year (2016-17)  
 President and Provost provide roadmap funding decisions to campus (7/15/16)

Committee Members (2014-2015):

Wayne Jones (Chair)	Harpur/Science & Math/Chemistry
Jonathan Krasno	Harpur/Social Sciences/Political Science
H. Richard Naslund	Harpur/Science & Math/Geological Sciences
Roy McGrann	Watson/Mechanical Engineering
Tom Sinclair	College of Community & Public Affairs/Public Administration
Pamela Stewart Fahs	Decker School of Nursing
Nan Zhou	School of Management
Caryl Ward	Libraries
Bogum Yoon	Graduate School of Education
Ravi Prakriya	Undergraduate student
Alysa Pomer	Graduate student
Donald Nieman	President ex-officio member
Michael McGoff	Provost ex-officio member
Alistair Lees	Chair of Faculty Senate
(Tom Sinclair)	Chair of Faculty Senate Exec Comm
Howard Brown	Additional non-voting member if any

**Binghamton University**

**Faculty Senate Budget Review Committee (BRC)**

**Road Map Final Proposal Review**

**June, 2015**

The Faculty Senate Budget Review Committee met during May to follow up on the 27 prioritized proposals identified and coordinated through the Road Map Steering Committee process. We were delighted to see that all of our top ranked items remained on the list.

Attached to this memo is our ranking of the 27 proposals. The proposals are ranked with 5 stars indicating those proposals with strongest support and 1 star the weakest support. We included comments regarding our rankings of the top proposals with our last report. If you have any further questions, please let me know. We would also be happy to discuss any of the proposals with you if you like.

One of our strongly recommended proposals was not included in the list of 27. We would like to re-emphasize Proposal 45. This project would create a Binghamton University Testing Center. This is a critical need across campus that will be useful for traditional classes, hybrid instruction, SSD, and more recent growth in on-line learning. The resources are very modest for a pilot that, if successful, could grow, and would help release faculty time. We believe this project would be worth further investment either through the Road Map process or perhaps as a combined Student Affairs/Academic Affairs project.

Binghamton University Road Map  
Fiscal Year 2016-2017

Road Map Proposal Ranking by the Faculty Senate  
Budget Review Committee, June, 2015

BRC ranking	Proposal Number	Proposal Name	SP Team	Page Number
*****	10	NSF Graduate Research Fellowship Supplements	1	2
****	13	Support for New Faculty Start Up	1	4
*****	50	Matched Funding for Doctoral Students	1	6
****	62	Expanding Masters Enrollments with Scholarship Incentives	1	8
*****	63	Stipend Increase for New Doctoral Students	1	10
**	48	Research Bridge Funding Internal Support Program	1	12
**	56	Pathway to MSW Program Growth	1	14
***	58	Health Sciences Core Facility Instrumentation	1	17
***	32	Establish a Service Based Statistical Consulting Center	1	20
*	41	Binghamton University Career and Professional Development	2	23
*****	51	Case Management Funding	2	25
*		Retaining Students in Academic Difficulty, Increasing Advising Support		27
	66		2	
*	101	Academic and Video Production Specialists--2	2	29
**		Expand Graduate student Support to Recruit Historically Underrepresented Minority (URM) Students in STEM		31
	26		3	
*		Third LACAS Latin American, Caribbean, and Latino/a Studies Undergraduate Student Research Conference		33
	7		3	
**	19	Afro-Cuban Musical Instruments	3	35
*	39	Watson School Diversity Programs and Initiatives Coordinator	3	37
*		Provide improved access to Open Educational Material and Course Reserve Services		39
	49		3	
*	96	MRC Interpretation and Translation Program	3	42
***	20	ISSS Associate Director/Crisis Manager	4	45
*	11	Technology Transfer Award	4	47
*	76	Faculty International Travel Fund	4	49
*	9	Classroom Upgrades	5	50
*****	47	Additional Needed Frontline Fundraiser: Director of Development	5	51
***	87	High Performance and Data Intensive Computing Facility	5	53
*	82	Budget Request ITC Hazardous Waste--Option 2	5	55
**	75	Rosefsky Gallery Upgrade	5	57

\*\*\*\*\* corresponds to highest ranked proposals

\* corresponds to lowest ranked proposals

Not for External Release



# Operating Disbursements All Funds Summary 2013-2014

*Prepared by the Associate Vice President for Administrative Affairs on November 24, 2014*



## 2013-14 OPERATING DISBURSEMENTS REPORT

---

### **Binghamton University Financial Reporting**

The campus is exploring the creation of new documents that tie fiscal results and plans to mission goals and roadmap planning. This report illustrates how the institution expends funds that it has local discretion to expend. It also provides an excellent analysis of our recent financial spending and demonstrates the path the campus is on towards our long term mission. We will keep the campus informed as we develop new financial reports.

### **Summary of Fiscal Controls**

The University receives funding from multiple sources. Each funding source has its own set of accounting and fiscal controls. Following is a brief description of each funding source. The fiscal year is the same for all fund sources: July 1 through June 30.

#### ***State Purpose Funds:***

These funds are appropriated annually by the State Legislature through the State budgetary process. All activity is monitored by the State Comptroller's Office. For the purpose of this presentation, State Purpose funds include general State Operating, SUTRA, Stabilization, Special Programming and College Work Study appropriations.

#### ***Income Fund Reimbursable:***

This mechanism allows operations to administer certain funds that collect revenue in support of those functions. Examples include photocopy services, research grant cost recovery, food services, parking and library fines. Like State Purpose funds, IFR funds are appropriated annually by the State Legislature and all activity is monitored by the State Comptroller's Office. Activities are funded by the operations through funds raised by the activity.

#### ***Dormitory Income Fund:***

This mechanism is used to operate the campus residence halls. Revenues collected from the student room rates are used to meet costs associated with residence hall related operations and activities.

#### ***Research Foundation:***

The Research Foundation of the State University of New York serves as the conduit for all grants and contracts awarded to SUNY institutions. The Research Foundation provides basic administrative support to the campuses. The University is responsible for ensuring that expenditures are made in accordance with Research Foundation, sponsor, and campus guidelines and that sponsor billings are timely and accurate.

#### ***Binghamton University Foundation:***

The Binghamton University Foundation is a not-for-profit corporation created and operated to receive and administer gifts and donations for the campus. Monies are held as restricted or unrestricted in a fund account and are made available to departments in accordance with gift or donation specifications. The Alumni Association is a separate entity but works closely with the Binghamton University Foundation.

The Foundation also provides bookkeeping services for specific operations through agency accounts as allowed by SUNY policies. Agency accounts are established and monitored based on University and Binghamton University Foundation guidelines. Agency Accounts reflect activities of State



departments that have been authorized by SUNY policy. The Binghamton Foundation provides fiduciary accounting reports to the State departments for those activities.

### **Changes In Accounting Method**

The Operating Disbursements Report reflects changes in accounting methods and expense reporting over time. Where prior period numbers are on the current report, we have restated or cross-referenced those numbers to assist the reader. However, prior printed reports reflect costs and cost allocations based upon different accounting practices and will not be comparative. Below is a summary of changes reflected in the reports.

### **Changes in Office Reporting**

#### ***State Purpose Funds:***

- The cost of Graduate Student Stipends and Tuition Scholarships were previously reported in the Graduate School. Those costs are now recorded in the schools/departments where the graduate students are assigned.
- The cost of Graduate Student Scholarships budgeted in the SUNY financial plan, totaling approximately \$3.7 million, is reported as expenditure in the schools where the students are assigned.
- Changes in office reporting has occurred over the past year:
  - Communications from External Affairs to Provost
  - Educational Communications from Administration to Provost
  - Auxiliary Services and Food Service from Administration to Student Affairs
  - Affirmative Action, Internal Audit and Legal from Administration to President
- Changes beginning in 2014-15:
  - Financial management and reporting from Administration to Provost
  - External Affairs and Development are split and report to the President
  - Parking from Administration to Student Affairs

#### ***Income Fund Reimbursable Funds***

- Construction costs charged to IFR accounts that are later capitalized have been reported in different time periods. We have petitioned SUNY to establish construction-in-progress accounts to eliminate these reporting problems. Costs incurred as disbursements in one year are being removed from the following year's disbursements when the project is capitalized.
- Includes cost of Fringe Benefits

#### ***Dormitory Income Fund:***

- The purpose of the Operating Disbursements Report is to reflect costs paid and financed locally. Our Dormitory Income Fund is required to pay for the cost of Fringe Benefits, and for 2013-14 that cost was approximately \$7.9 million dollars. This change in reporting was effective in the year 2010-11 and continues.
- Includes cost of Fringe Benefits

November 24, 2014

# COMPARISON OF OPERATING DISBURSEMENTS: ALL FUND SOURCES

FISCAL YEARS 2010 THROUGH 2014

CHART 1

BINGHAMTON UNIVERSITY  
NOT FOR EXTERNAL RELEASE

11/24/14

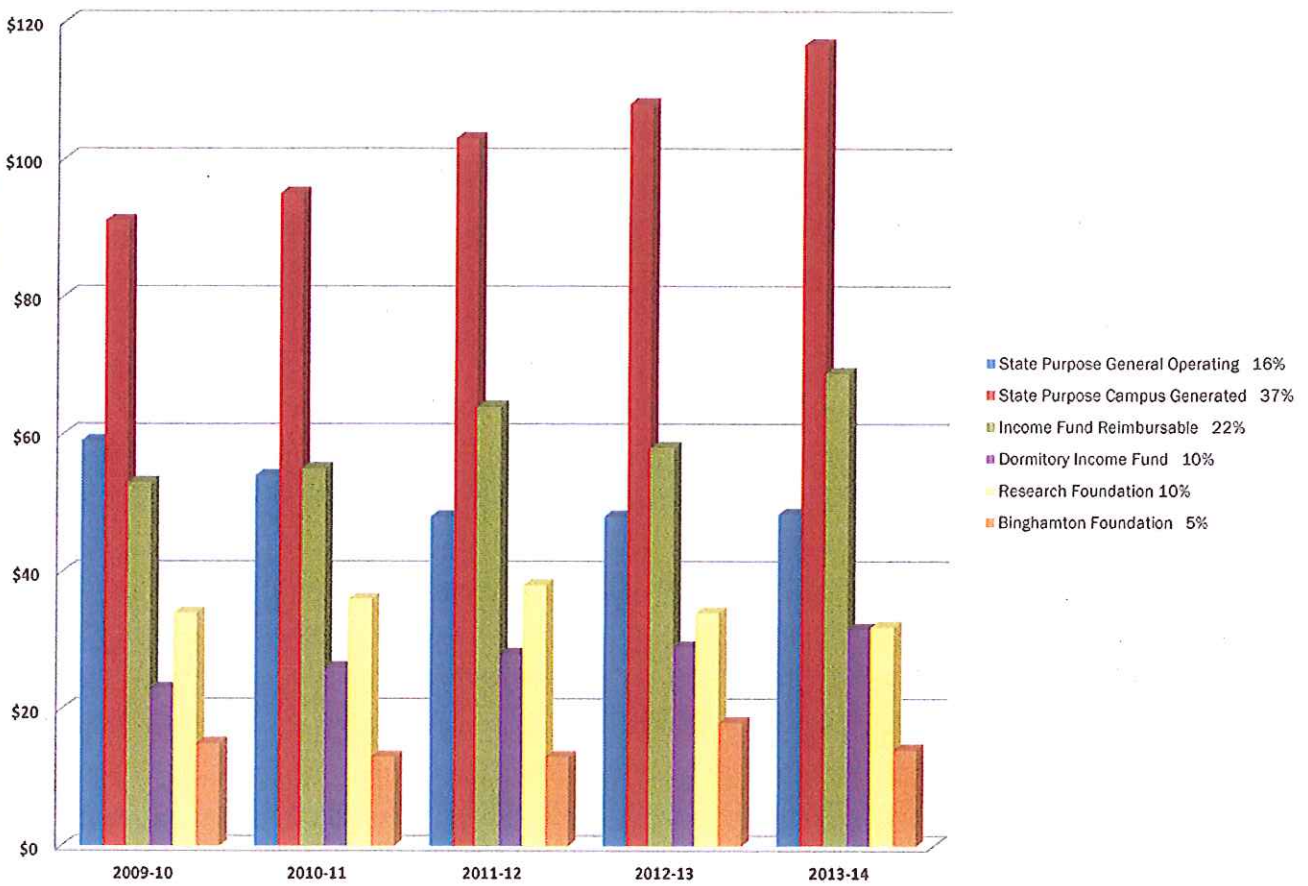
FUND	2009-10		2010-11		2011-12		2012-13		2013-14		CHANGE FY10-FY14
	FISCAL YEAR	%	FISCAL YEAR	%	FISCAL YEAR	%	FISCAL YEAR	%	FISCAL YEAR	%	
<b>STATE PURPOSE:</b>											
GENERAL OPERATING	\$58,497.7	21%	\$54,334.0	20%	\$48,010.6	16%	48,333.0	16%	48,333.0	16%	-17%
CAMPUS GENERATED	91,274.7	33%	94,759.2	34%	103,069.4	35%	107,828.0	36%	116,658.0	37%	28%
<b>TOTAL</b>	<b>149,772.4</b>	<b>54%</b>	<b>149,152.2</b>	<b>54%</b>	<b>151,080.0</b>	<b>51%</b>	<b>156,159.5</b>	<b>53%</b>	<b>164,991.0</b>	<b>53%</b>	<b>10%</b>
<b>INCOME FUND REIMBURSABLE</b>	<b>63,281.4</b>	<b>19%</b>	<b>54,867.7</b>	<b>20%</b>	<b>64,447.6</b>	<b>22%</b>	<b>58,225.4</b>	<b>20%</b>	<b>63,872.5</b>	<b>22%</b>	<b>29%</b>
<b>DORMITORY INCOME FUND</b>	<b>23,143.5</b>	<b>8%</b>	<b>25,705.1</b>	<b>9%</b>	<b>27,745.9</b>	<b>9%</b>	<b>29,092.8</b>	<b>10%</b>	<b>31,593.6</b>	<b>10%</b>	<b>37%</b>
<b>RESEARCH FOUNDATION</b>											
PROGRAM-DIRECT	29,513.4	11%	30,782.5	11%	32,251.3	11%	27,901.1	9%	25,625.3	8%	-13%
PROGRAM-INDIRECT	4,772.2	2%	5,005.8	2%	5,725.2	2%	6,569.5	2%	6,316.9	2%	32%
<b>TOTAL</b>	<b>34,285.6</b>	<b>12%</b>	<b>35,788.3</b>	<b>13%</b>	<b>37,976.5</b>	<b>13%</b>	<b>34,470.6</b>	<b>12%</b>	<b>31,942.2</b>	<b>10%</b>	<b>-7%</b>
<b>BINGHAMTON FOUNDATION</b>											
UNRESTRICTED	3,055.3	1%	3,143.3	1%	3,147.0	1%	3,344.1	1%	3,070.8	1%	1%
RESTRICTED	1,862.6	1%	2,785.0	1%	2,163.4	1%	2,766.2	1%	2,686.6	1%	44%
ENDOWMENT EXPENDABLE	1,208.6	0%	614.6	0%	1,193.2	0%	2,878.4	1%	3,135.0	1%	159%
SCHOLARSHIPS & AWARDS	1,619.2	1%	1,772.1	1%	2,293.4	1%	2,461.4	1%	2,497.5	1%	54%
<b>SUB-TOTAL BINGHAMTON FOUNDATION ACTIVITY</b>	<b>7,745.7</b>	<b>3%</b>	<b>8,315.0</b>	<b>3%</b>	<b>8,802.0</b>	<b>3%</b>	<b>11,450.1</b>	<b>4%</b>	<b>11,389.9</b>	<b>4%</b>	<b>47%</b>
AGENCY ACCOUNTS	7,693.2	3%	4,701.9	2%	3,776.1	1%	6,750.0	2%	2,719.1	1%	-65%
<b>TOTAL</b>	<b>15,438.9</b>	<b>6%</b>	<b>13,016.9</b>	<b>5%</b>	<b>12,578.1</b>	<b>4%</b>	<b>18,200.1</b>	<b>6%</b>	<b>14,109.0</b>	<b>5%</b>	<b>-9%</b>
<b>UNIVERSITY TOTAL</b>	<b>\$ 275,921.8</b>	<b>100%</b>	<b>\$ 278,530.2</b>	<b>100%</b>	<b>\$ 293,828.1</b>	<b>100%</b>	<b>286,143.4</b>	<b>100%</b>	<b>311,503.3</b>	<b>100%</b>	<b>13%</b>

Notes:

- 1) Amounts are presented on the cash basis
- 2) Amounts are based on campus-based accounting systems and do not reflect all IPEDS adjustments
- 3) Expenditures are classified according to the policies of each respective fund
- 4) State Purpose expenditures do not include State Debt Service, Fringe Benefits or centrally applied overheads.
- 5) State Purpose funds include Core Budget, SUTRA and Federal Work Study Funds and Temporary Allocations, Special Program Allocations & State Stabilization Funds

### BINGHAMTON UNIVERSITY OPERATING DISBURSEMENTS: ALL FUND SOURCES (In Millions)

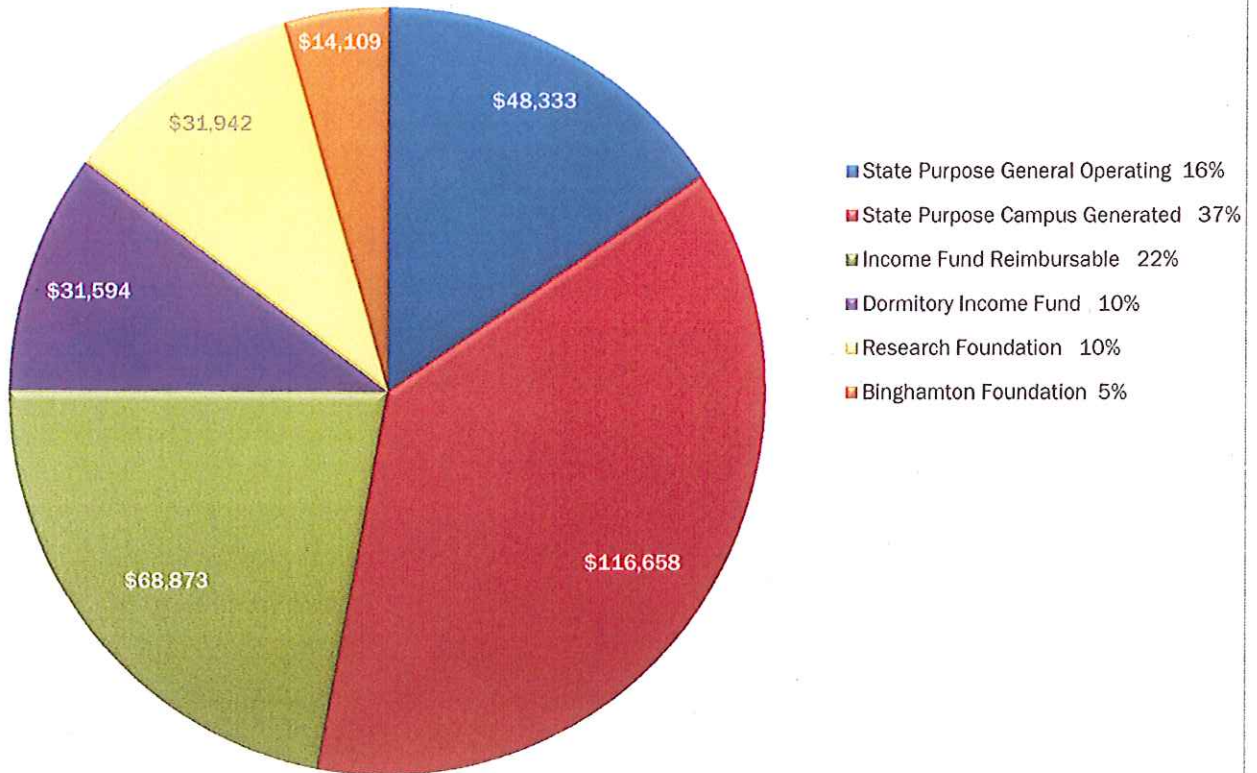
CHART 1  
11/24/14



NOT FOR EXTERNAL RELEASE

**BINGHAMTON UNIVERSITY**  
**OPERATING DISBURSEMENTS: ALL FUND SOURCES**  
**FY 2013-2014**  
(In Thousands)

**CHART 1**  
11/24/14



**SUMMARY OF OPERATING DISBURSEMENTS: ALL FUNDS BY DIVISION**  
**FISCAL YEARS 2013-14**

**CHART 2**

BINGHAMTON UNIVERSITY  
 NOT FOR EXTERNAL RELEASE

11/24/14

FUND	TOTAL	PRESIDENT	ACADEMIC AFFAIRS	ADMIN	RESEARCH	STUDENT AFFAIRS	ADVANCEMENT
STATE PURPOSE	\$164,991.0	\$1,342.7	\$120,883.8	\$33,507.3	\$2,303.7	\$5,225.7	\$1,727.8
INCOME FUND REIMBURSABLE	\$68,872.5	305.7	9,291.9	16,521.7	2,052.8	40,700.4	-
DORMITORY INCOME FUND	\$31,593.6	-	70.5	23,363.0	-	8,160.1	-
<b>RESEARCH FOUNDATION</b>							
PROGRAM-DIRECT	25,625.3	-	20,780.0	-	3,729.1	1,116.2	-
PROGRAM-INDIRECT	6,316.9	205.0	1,455.2	102.5	4,544.3	6.6	3.3
TOTAL	31,942.2	205.0	22,235.2	102.5	8,273.4	1,122.8	3.3
<b>BINGHAMTON FOUNDATION</b>							
UNRESTRICTED	3,070.8	85.4	45.0	-	-	-	2,940.4
RESTRICTED	2,686.6	0.5	2,018.3	202.5	323.5	97.5	44.3
ENDOWMENT EXPENDABLE	3,135.0	-	2,304.1	50.6	7.5	6.7	766.1
SCHOLARSHIPS & AWARDS	2,497.5	6.5	1,142.4	223.2	0.2	170.9	954.3
SUBTOTAL	11,389.9	92.4	5,509.8	476.3	331.2	275.1	4,705.1
AGENCY TOTAL	2,719.1	113.5	931.7	308.8	66.2	1,269.8	30.1
	14,109.0	205.9	6,441.5	785.1	397.4	1,543.9	4,735.2
<b>UNIVERSITY TOTAL 2013-14</b>	<b>\$311,508.3</b>	<b>\$2,059.3</b>	<b>\$158,922.9</b>	<b>\$74,279.6</b>	<b>\$13,027.3</b>	<b>\$56,752.9</b>	<b>\$6,466.3</b>
UNIVERSITY TOTAL 2012-13	296,158.9	2,017.1	152,763.6	97,203.3	10,587.4	25,241.4	8,346.1
UNIVERSITY TOTAL 2011-12	293,828.3	1,548.1	148,147.3	101,863.6	10,465.9	23,469.9	8,333.5
UNIVERSITY TOTAL 2010-11	278,530.2	1,541.9	144,833.0	92,435.2	8,609.0	23,123.3	7,987.8
UNIVERSITY TOTAL 2009-10	268,235.1	1,485.0	140,516.5	89,137.3	9,024.6	20,196.5	7,875.2

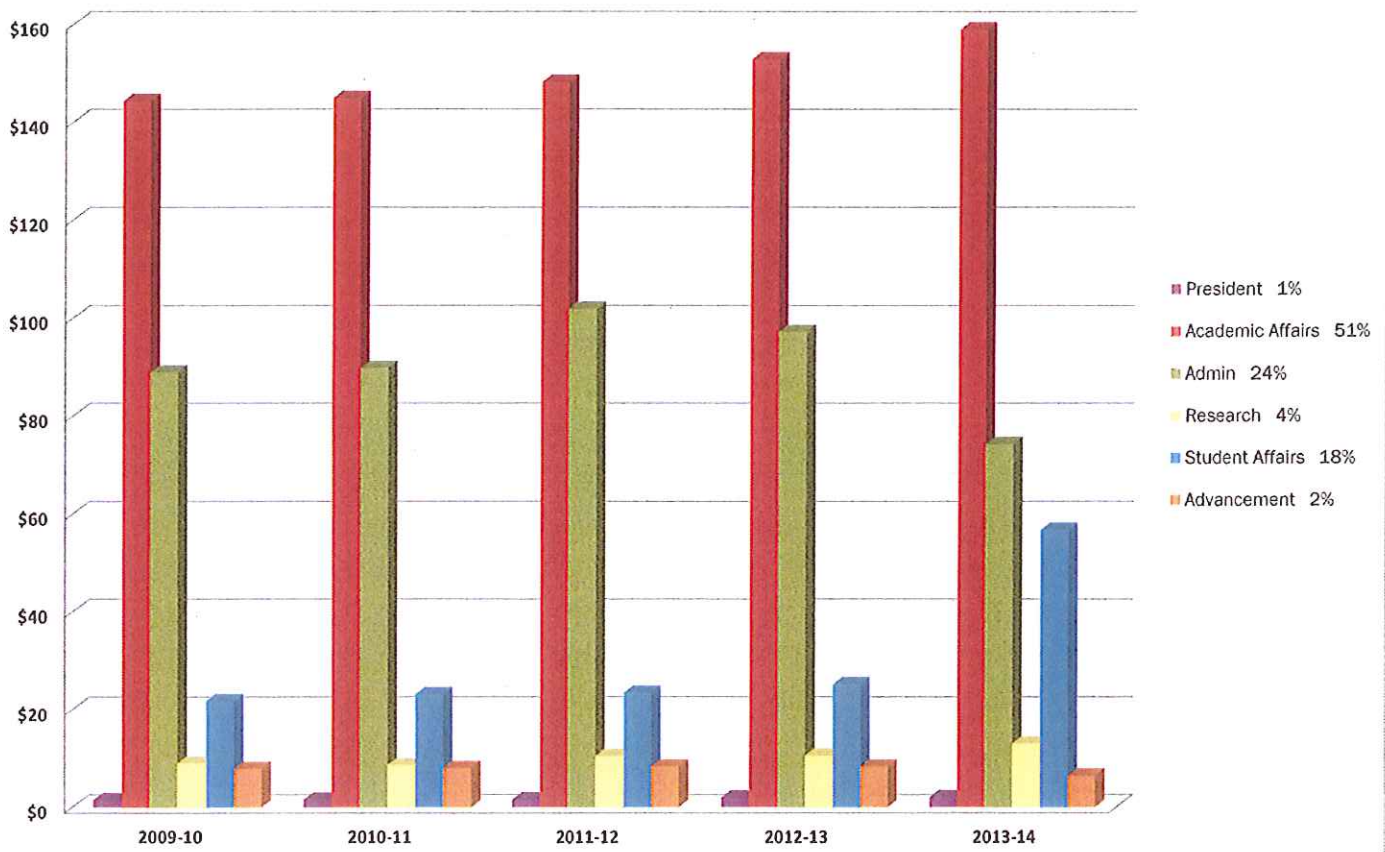
Notes:

- 1) Amounts are presented on the cash basis
- 2) Amounts are based on campus-based accounting systems and do not reflect all IPEDS adjustments
- 3) Expenditures are classified according to the policies of each respective fund
- 4) State Purpose expenditures do not include State Debt Service, Fringe Benefits and centrally applied overheads
- 5) State Purpose funds include Core Budget, SUTRA and Federal Work Study Funds and Temporary Allocations, Special Program Allocations & State Stabilization Funds
- 6) Dormitory Income Fund - the first phase of East campus housing opened in 2010-11 increasing revenues and expenses. In addition, change in accounting method was to report Fringe Benefit cost paid from DIFR funds. Debt Service costs are not reported (approx. \$15 million to 2013-14)

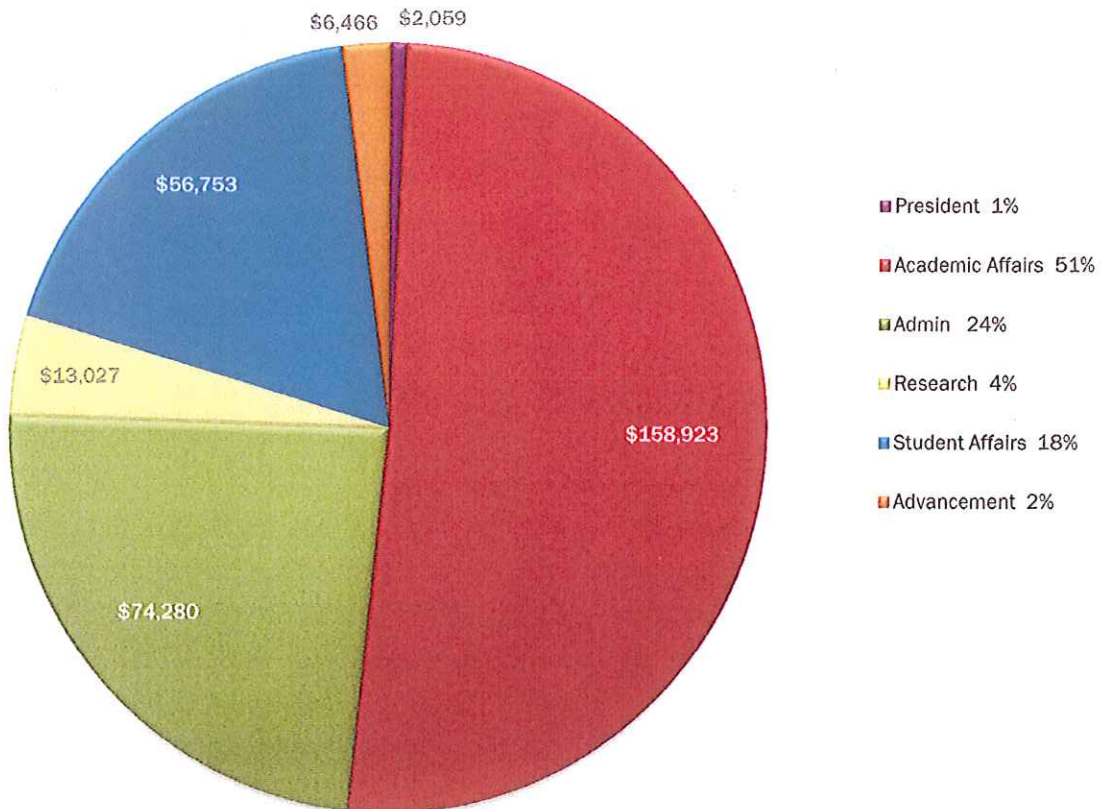
NOT FOR EXTERNAL RELEASE

### BINGHAMTON UNIVERSITY SUMMARY OF OPERATING DISBURSEMENTS: ALL FUNDS (In Millions)

CHART 2  
11/24/14



**BINGHAMTON UNIVERSITY**  
**OPERATING DISBURSEMENTS: ALL FUNDS BY DIVISION**  
**FY 2013-2014**  
(In Thousands)



**SUMMARY OF ACADEMIC AFFAIRS OPERATING DISBURSEMENTS: ALL FUNDS**  
**FISCAL YEARS 2013-14**

**CHART 3**

BINGHAMTON UNIVERSITY  
 NOT FOR EXTERNAL RELEASE

11/24/14

FUND	TOTAL	GENERAL									(from Chart 7)
			GRAD SCHOOL	LIBRARY	HARPUR	WATSON	SOM	SON	SOE	CCPA	COMM & MARKETING
STATE PURPOSE	\$ 120,833.8	\$ 16,203.8	\$ 2,407.1	\$ 10,209.3	\$ 55,847.5	\$ 14,697.0	\$ 8,099.2	\$ 5,634.2	\$ 2,420.2	\$ 3,602.7	1562.8
INCOME FUND REIMBURSABLE	\$ 9,291.9	3,762.9	415.8	544.2	2,652.2	919.8	177.1	297.2	169.9	252	80.8
DORMITORY INCOME FUND	\$ 70.5	70.5	-	-	-	-	-	-	-	-	-
RESEARCH FOUNDATION											
PROGRAM-DIRECT (see History below)	20,780.0	-	350.2	36.3	9,991.8	8,427.5	71.5	689.4	1,107.4	105.9	-
ADMINISTRATIVE-CAMPUS	1,455.2	104.9	22	-	627.9	598.8	101.0	25	-	17.9	-
TOTAL	22,235.2	104.9	352.4	36.3	10,619.7	9,026.3	172.5	691.9	1,107.4	123.8	-
BINGHAMTON FOUNDATION											
UNRESTRICTED	45.0	45.0	-	-	-	-	-	-	-	-	-
RESTRICTED	2,018.3	54.4	20.3	54.1	953.1	188.7	641.3	50.0	19.7	26.7	-
ENDOWMENT EXPENDABLE	2,304.1	125.1	25.0	39.7	832.9	195.8	564.8	389.8	64.2	16.8	-
SCHOLARSHIPS & AWARDS	1,142.4	3.4	23.9	-	584.5	105.2	234.1	127.6	35.0	28.7	-
SUBTOTAL	5,509.8	227.9	69.2	93.8	2,430.5	459.7	1,440.2	567.4	118.9	72.2	-
AGENCY	931.7	613.7	-	11.8	43.6	37.3	49.4	3.4	121.7	80.8	-
TOTAL	6,441.5	841.6	69.2	105.6	2,474.1	627.0	1,489.6	570.8	240.6	123.0	-
<b>ACADEMIC AFFAIRS TOTAL 2013-14</b>	<b>\$ 158,922.9</b>	<b>\$ 20,983.7</b>	<b>\$ 3,244.5</b>	<b>\$ 10,835.4</b>	<b>\$ 71,593.5</b>	<b>\$ 25,170.1</b>	<b>\$ 9,938.4</b>	<b>\$ 7,194.1</b>	<b>\$ 3,958.1</b>	<b>\$ 4,301.5</b>	<b>\$ 1,643.6</b>
ACADEMIC AFFAIRS TOTAL 2012-13	152,763.6	14,285.6	2,725.5	10,724.0	73,914.9	25,390.1	9,449.8	7,571.4	3,767.4	4,935.0	n/a
ACADEMIC AFFAIRS TOTAL 2011-12	148,147.3	11,703.8	2,829.0	10,344.0	73,820.7	25,561.7	8,457.6	6,801.5	3,956.9	4,632.1	n/a
ACADEMIC AFFAIRS TOTAL 2010-11	144,633.0	12,037.5	16,651.0	10,308.1	62,735.0	20,645.0	7,557.1	6,892.3	4,323.8	3,685.2	n/a
ACADEMIC AFFAIRS TOTAL 2009-10	140,516.5	13,805.3	13,146.5	10,683.5	60,079.9	22,048.5	7,942.0	5,567.3	3,959.4	3,284.1	n/a
PROGRAM-DIRECT RF 2012-13	24,262.4	205.8	440.2	29.9	12,032.8	8,779.3	63.2	948.5	972.8	789.9	n/a
PROGRAM-DIRECT RF 2011-12	29,123.0	221.5	593.6	31.1	14,223.8	11,188.8	8.5	848.5	1,148.3	858.9	n/a

Notes:

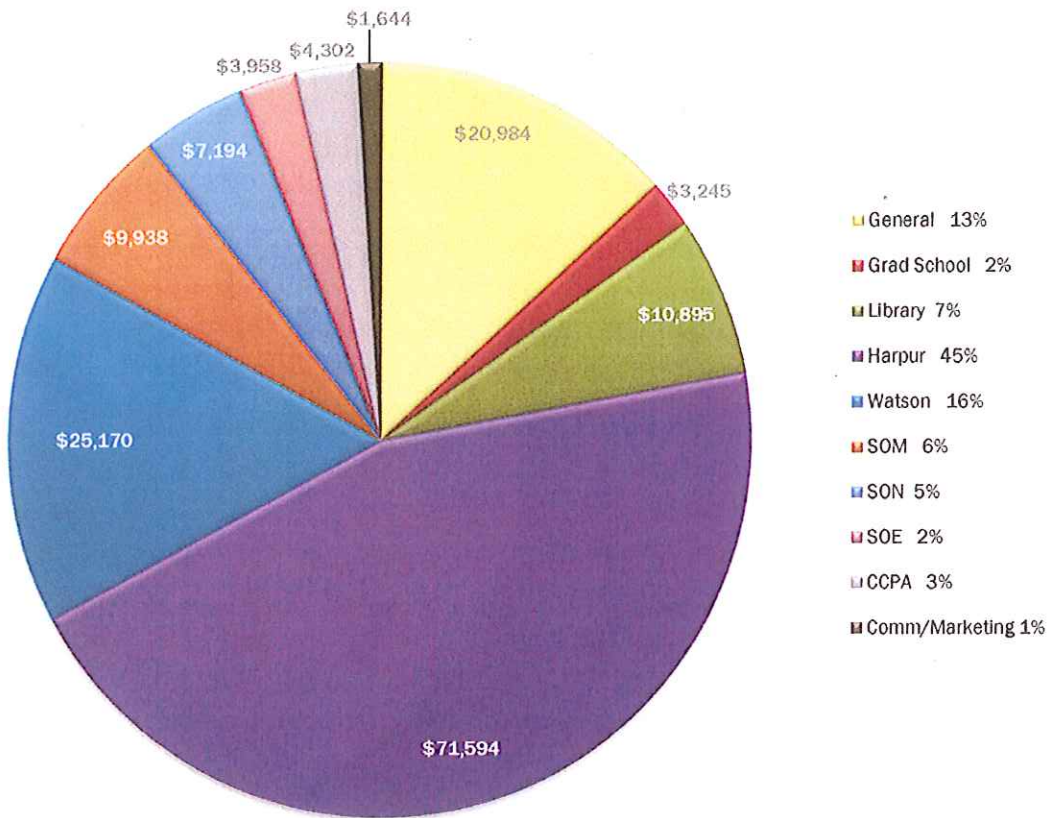
- 1) Amounts are presented on the cash basis.
- 2) Amounts are based on campus-based accounting systems and do not reflect all IPEDS adjustments.
- 3) Expenditures are classified according to the policies of each respective fund.
- 4) State Purpose expenditures do not include State Debt Service, Fringe Benefits, or centrally applied overheads.
- 5) State Purpose funds include Core Budget, SUTRA and Federal Work Study Funds and Temporary Allocations, Special Program Allocations and State Stabilization Funds.
- 6) The General column includes Provost Office operation as well as Registrar, Enrollment Management, Institutional Research, University Art Museum, Anderson Performing Arts Center, and Continuing Education/Summer Program.
- 7) Graduate school stipends are reported in School expenditures beginning in 2011-12(SUNY & local Oracle).  
 Graduate scholarships are shown in the schools where the stipends are charged.



NOT FOR EXTERNAL RELEASE

**BINGHAMTON UNIVERSITY**  
**ACADEMIC AFFAIRS OPERATING DISBURSEMENTS: ALL FUNDS**  
**FY2013-2014**  
(In Thousands)

**CHART 3**  
11/24/14



# SUMMARY OF ADMINISTRATION OPERATING DISBURSEMENTS: ALL FUNDS

FISCAL YEARS 2013-14

CHART 4

BINGHAMTON UNIVERSITY  
NOT FOR EXTERNAL RELEASE

11/24/14

FUND	TOTAL	VICE PRESIDENT	ITS	PHYSICAL FACILITIES	UTILITIES	BUSINESS OPERATIONS	POLICE	ASSOC VP ADM SVCS	INTERCOLL ATHLETICS	
STATE PURPOSE	\$ 33,507.3	\$ 1,761.7	\$ 1,847.3	\$ 13,293.9	\$ 7,763.8	\$ 1,903.1	\$ 1,455.4	\$ 2,111.9	\$ 3,410.2	
INCOME FUND REIMBURSABLE	16,521.7	943.9	8,019.1	2,611.6	(4,297.1)	(199.2)	779.0	(128.0)	8,792.4	
DORMITORY INCOME FUND	23,363.0	-	1,948.9	12,295.3	5,654.8	326.1	2,652.3	455.6	-	
RESEARCH FOUNDATION PROGRAM-DIRECT	-	-	-	-	-	-	-	-	-	
ADMINISTRATIVE-CAMPUS	102.5	102.5	-	-	-	-	-	-	-	
TOTAL	102.5	102.5	-	-	-	-	-	-	-	
BINGHAMTON FOUNDATION UNRESTRICTED	-	-	-	-	-	-	-	-	-	
RESTRICTED	202.5	0.3	0.1	20.7	-	-	-	-	181.4	
ENDOWMENT EXPENDABLE	50.6	-	-	-	-	-	-	-	50.6	
SCHOLARSHIPS & AWARDS	223.2	-	0.2	-	-	-	-	-	223.0	
SUBTOTAL	476.3	0.3	0.3	20.7	-	-	-	-	455.0	
AGENCY	308.8	70.7	-	-	-	-	-	-	238.1	
TOTAL	785.1	71.0	0.3	20.7	-	-	-	-	693.1	
<b>UNIVERSITY TOTAL 2013-14</b>	<b>\$ 74,279.6</b>	<b>\$ 2,879.1</b>	<b>\$ 11,815.6</b>	<b>\$ 28,181.5</b>	<b>\$ 9,121.5</b>	<b>\$ 2,030.0</b>	<b>\$ 4,916.7</b>	<b>\$ 2,432.5</b>	<b>\$ 12,895.7</b>	
										(to Chart 6)
UNIVERSITY TOTAL 2012-13	97,203.4	5,413.6	11,939.2	19,483.4	8,416.3	2,523.1	4,322.8	5,665.5	12,337.2	27,102.3
UNIVERSITY TOTAL 2011-12	101,863.6	3,611.0	11,247.3	27,040.1	9,285.3	3,143.4	5,457.1	4,974.7	12,020.4	24,214.3
UNIVERSITY TOTAL 2010-11	92,435.1	2,949.3	11,915.8	21,789.7	8,998.9	2,615.8	4,365.3	5,927.3	11,619.2	22,255.8
UNIVERSITY TOTAL 2009-10	89,137.3	3,585.6	11,340.3	19,690.8	9,336.4	2,160.1	4,101.5	5,257.4	10,773.3	22,691.9

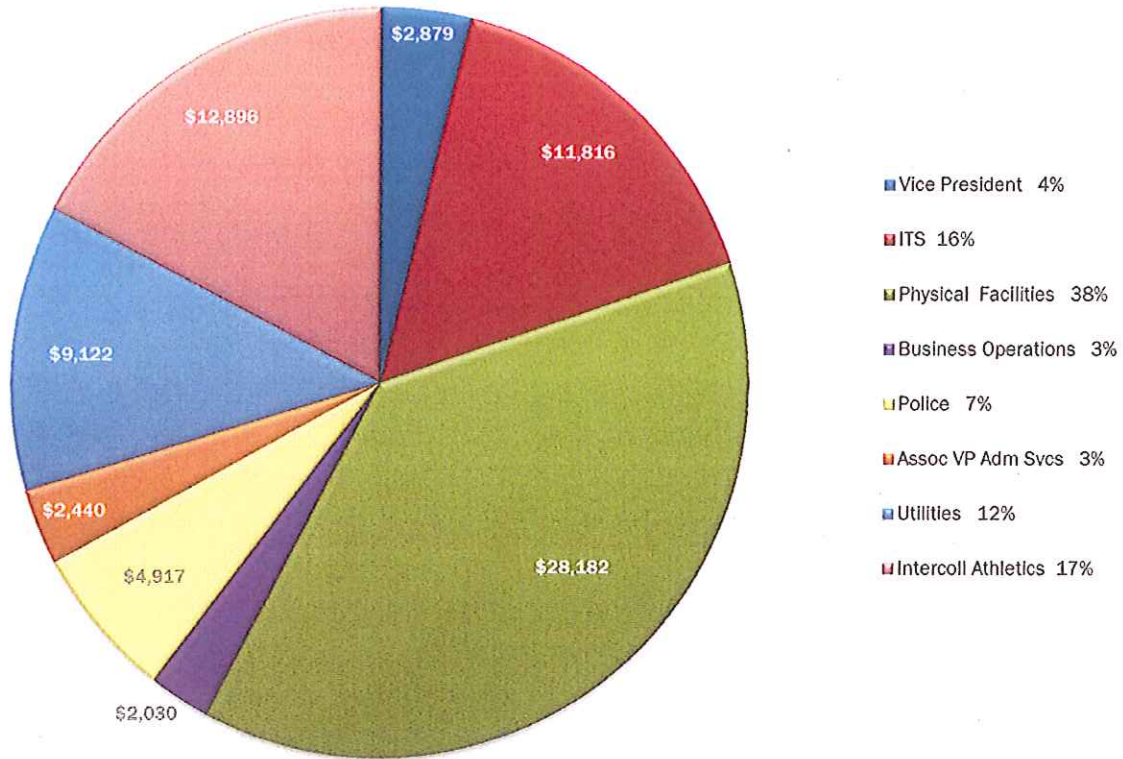
Notes:

- 1) Amounts are presented on cash basis
- 2) Amounts are based on campus-based accounting systems and do not reflect all IPEDS adjustments
- 3) Expenditures are classified according to the policies of each respective fund
- 4) State Purpose expenditures do not include State Debt Service, State Fringe Benefits or centrally applied overheads.
- 5) State Purpose funds include Core Budget, SUTRA and Federal Work Study Funds and Temporary Allocations
- 6) The Vice President column includes the Vice President Office, Internal Audit, Affirmative Action, University Counsel and Budget
- 7) Utilities: State \$5,095.8 + DIFR \$4,025.7 = Total \$9,121.5. IFR/State/DIFR fund transfers for utility management projects crossed funds through the IFR, totaling (\$4,297.1).

NOT FOR EXTERNAL RELEASE

**BINGHAMTON UNIVERSITY**  
**ADMINISTRATION OPERATING DISBURSEMENTS: ALL FUNDS**  
**FY2013-2014**  
(In Thousands)

**CHART 4**  
11/24/14



**SUMMARY OF RESEARCH OPERATING DISBURSEMENTS: ALL FUNDS**  
**FISCAL YEARS 2013-14**

**CHART 5**  
 BINGHAMTON UNIVERSITY  
 NOT FOR EXTERNAL RELEASE

11/24/14

FUND	TOTAL	VP RESEARCH	RESEARCH DEVELOPMENT & ADMINISTRATION	GOVERNMENT RELATIONS AND ECONOMIC DEV	LAB ANIMAL RESOURCES	RESEARCH CENTERS
STATE PURPOSE	\$ 2,303.7	\$ 1,127.6	\$ .	\$ 185.6	\$ 502.0	\$ 489.5
INCOME FUND REIMBURSABLE	2,052.8	111.1	1,941.7	-	-	-
DORMITORY INCOME FUND	-	-	-	-	-	-
RESEARCH FOUNDATION						
PROGRAM-DIRECT	3,729.1	492.5	-	1,116.1	-	2,120.5
ADMINISTRATIVE-CAMPUS	4,544.3	2,043.6	1,972.8	2.7	113.1	412.1
TOTAL	8,273.4	2,536.1	1,972.8	1,118.8	113.1	2,532.6
BINGHAMTON FOUNDATION						
UNRESTRICTED	-	-	-	-	-	-
RESTRICTED	323.5	-	323.5	-	-	-
ENDOWMENT EXPENDABLE	7.5	-	7.5	-	-	-
SCHOLARSHIPS & AWARDS	0.2	-	0.2	-	-	-
AGENCY	66.2	-	66.2	-	-	-
TOTAL	397.4	-	397.4	-	-	-
<b>UNIVERSITY TOTAL 2013-14</b>	<b>\$ 13,027.3</b>	<b>\$ 3,774.8</b>	<b>\$ 4,311.9</b>	<b>\$ 1,304.4</b>	<b>\$ 615.1</b>	<b>\$ 3,021.1</b>
UNIVERSITY TOTAL 2012-13	10,587.4	3,073.7	3,452.3	2,861.4	564.5	635.5
UNIVERSITY TOTAL 2011-12	10,465.9	3,476.7	4,664.2	1,231.0	458.2	358.6
UNIVERSITY TOTAL 2010-11	8,609.1	2,035.1	4,446.1	1,492.8	497.2	137.9
UNIVERSITY TOTAL 2009-10	9,024.6	n/a	n/a	n/a	n/a	n/a

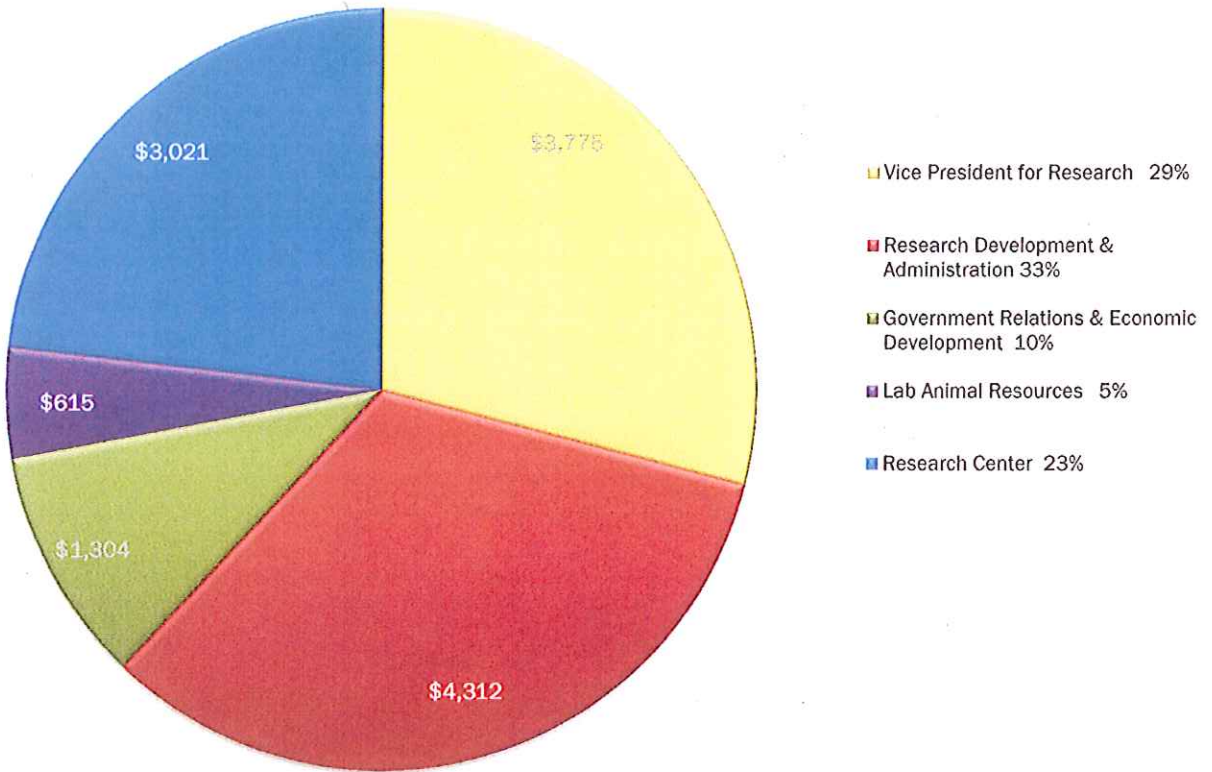
Notes:

- 1) Amounts are based on campus-based accounting systems and do not reflect all IPEDS adjustments
- 2) Expenditures are classified according to the policies of each respective fund
- 3) Amounts are presented on the cash basis
- 4) SUNY State Debt Service, Fringe Benefits or centrally applied overheads are not reflected in totals
- 5) State Purpose funds include Core Budget, SUTRA and Federal Work Study Funds, and Temporary Allocations
- 6) Indirect expenses for VP Research includes central office assessment of \$1,182.2

NOT FOR EXTERNAL RELEASE

**BINGHAMTON UNIVERSITY**  
**RESEARCH OPERATING DISBURSEMENTS: ALL FUNDS**  
**FY 2013-2014**  
(In Thousands)

**CHART 5**  
11/24/14



**SUMMARY OF STUDENT AFFAIRS OPERATING DISBURSEMENTS: ALL FUNDS**  
**FISCAL YEARS 2013-14**

**CHART 6**  
 BINGHAMTON UNIVERSITY  
 NOT FOR EXTERNAL RELEASE

11/24/14

FUND	TOTAL	VP STUDENT AFFAIRS	ASSOC VP & DEAN OF STUDENTS	ASST VP STUDENT LIFE	STUDENT SERVICES	EOP & SPECIAL PROGRAMS	AUXILIARY SERVICES	FOOD SERVICE
STATE PURPOSE	\$ 5,225.7	\$ 810.4	\$ 284.5	\$ 380.6	\$ 1,699.3	\$ 1,925.4	\$ 125.5	\$ -
INCOME FUND REIMBURSABLE	40,700.4	1,079.9	726.7	7,636.2	3,241.6	8.2	3,082.9	24,924.9
DORMITORY INCOME FUND	8,160.1	771.3	791.5	5,281.0	669.5	-	646.8	-
RESEARCH FOUNDATION								
PROGRAM-DIRECT	1,116.2	-	-	-	1,116.2	-	-	-
PROGRAM-INDIRECT	6.6	-	-	-	6.6	-	-	-
TOTAL	1,122.8	-	-	-	1,122.8	-	-	-
BINGHAMTON FOUNDATION								
UNRESTRICTED								
RESTRICTED	97.5	33.6	3.1	49.7	2.0	9.1	-	-
ENDOWMENT REVENUE	6.7	5.3	-	-	1.4	-	-	-
SCHOLARSHIPS & AWARDS	170.9	3.3	0.3	-	155.8	11.5	-	-
SUBTOTAL	275.1	42.2	3.4	49.7	159.2	20.6	-	-
AGENCY	1,268.8	3.2	10.0	411.0	93.1	-	751.4	-
TOTAL	1,543.9	45.4	13.4	460.7	252.3	20.6	751.4	-
<b>STUDENT AFFAIRS TOTAL 2013-14</b>	<b>\$ 66,762.9</b>	<b>\$ 2,707.0</b>	<b>\$ 1,816.1</b>	<b>\$ 13,758.5</b>	<b>\$ 6,985.5</b>	<b>\$ 1,954.2</b>	<b>\$ 4,606.6</b>	<b>\$ 24,924.9</b>
	TOTAL	VP STUDENT AFFAIRS	ASSOC VP & DEAN OF STUDENTS	ASST VP STUDENT LIFE	STUDENT SERVICES	EOP & SPECIAL PROGRAMS	AUXILIARY SERVICES	FOOD SERVICE
STUDENT AFFAIRS TOTAL 2012-13	25,241.4	2,374.4	1,276.7	13,167.3	6,481.2	1,941.8	n/a	n/a
STUDENT AFFAIRS TOTAL 2011-12	23,469.9	1,729.8	1,700.2	12,382.6	6,016.8	1,640.6	n/a	n/a
STUDENT AFFAIRS TOTAL 2010-11	23,123.3	1,625.4	1,660.1	12,514.0	5,714.4	1,609.4	n/a	n/a
STUDENT AFFAIRS TOTAL 2009-10	20,196.6	n/a	n/a	n/a	n/a	n/a	n/a	n/a

1) Amounts are based on campus-based accounting systems and do not reflect all IPEDS adjustments

2) Expenditures are classified according to the policies of each respective fund

3) Amounts are presented on the cash basis

4) State Purpose expenditures do not include State Debt Service, State Fringe Benefits or centrally applied overheads

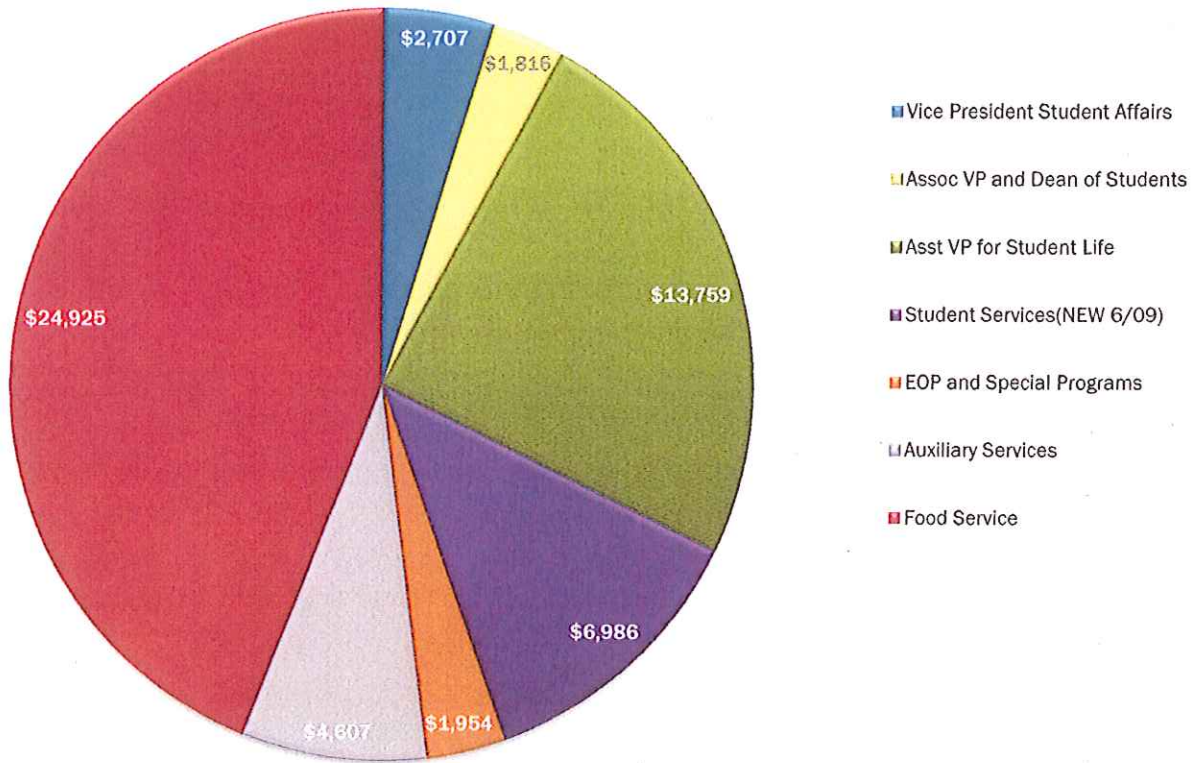
5) State Purpose funds include core budget, Federal Work Study Funds, and Temporary Allocations (i.e. EOP)

6) Income Fund Reimbursable funds are generated by fee income, or occasionally salary recovered from grants

7) Student Services includes Career Development Ctr., Office of Int'l Students & Scholar Svcs., Services for Students with Disabilities, Center for Civic Engagement, and Discovery

8) Dean of Students includes Off Campus College, Campus Activities, Multicultural Resource Center, and Office of Student Conduct

**BINGHAMTON UNIVERSITY**  
**STUDENT AFFAIRS OPERATING DISBURSEMENTS: ALL FUNDS**  
**FY2013-2014**  
(In Thousands)



**SUMMARY OF ADVANCEMENT/BF OPERATING DISBURSEMENTS: ALL FUNDS**

FISCAL YEARS 2013-14

**CHART 7**

BINGHAMTON UNIVERSITY  
NOT FOR EXTERNAL RELEASE

11/24/14

FUND	TOTAL	VICE PRESIDENT ADVANCEMENT	ALUMNI RELATIONS	DEVELOPMENT	BU FOUNDATION
STATE PURPOSE	\$ 1,727.8	\$ 135.3	\$ 435.2	\$ 476.3	\$ 681.0
INCOME FUND REIMBURSABLE	-	-	-	-	-
DORMITORY INCOME FUND	-	-	-	-	-
RESEARCH FOUNDATION					
PROGRAM-DIRECT	-	-	-	-	-
PROGRAM-INDIRECT	3.3	3.3	-	-	-
TOTAL	3.3	3.3	-	-	-
BINGHAMTON FOUNDATION					
UNRESTRICTED	2,940.4	2,940.4	-	-	-
RESTRICTED	44.3	44.3	-	-	-
ENDOWMENT EXPENDABLE	766.1	766.1	-	-	-
SCHOLARSHIPS & AWARDS	954.3	954.3	-	-	-
SUBTOTAL	4,705.1	4,705.1	-	-	-
AGENCY	30.1	30.1	-	-	-
TOTAL	4,735.2	4,735.2	-	-	-
EXTERNAL AFFAIRS TOTAL 2013-14	\$ 6,466.3	\$ 4,873.8	\$ 435.2	\$ 476.3	\$ 681.0
	<b>TOTAL</b>				
EXTERNAL AFFAIRS TOTAL 2012-13	8,346.1				
EXTERNAL AFFAIRS TOTAL 2011-12	8,336.6				
EXTERNAL AFFAIRS TOTAL 2010-11	7,987.7				
EXTERNAL AFFAIRS TOTAL 2009-10	7,875.2				

Notes:

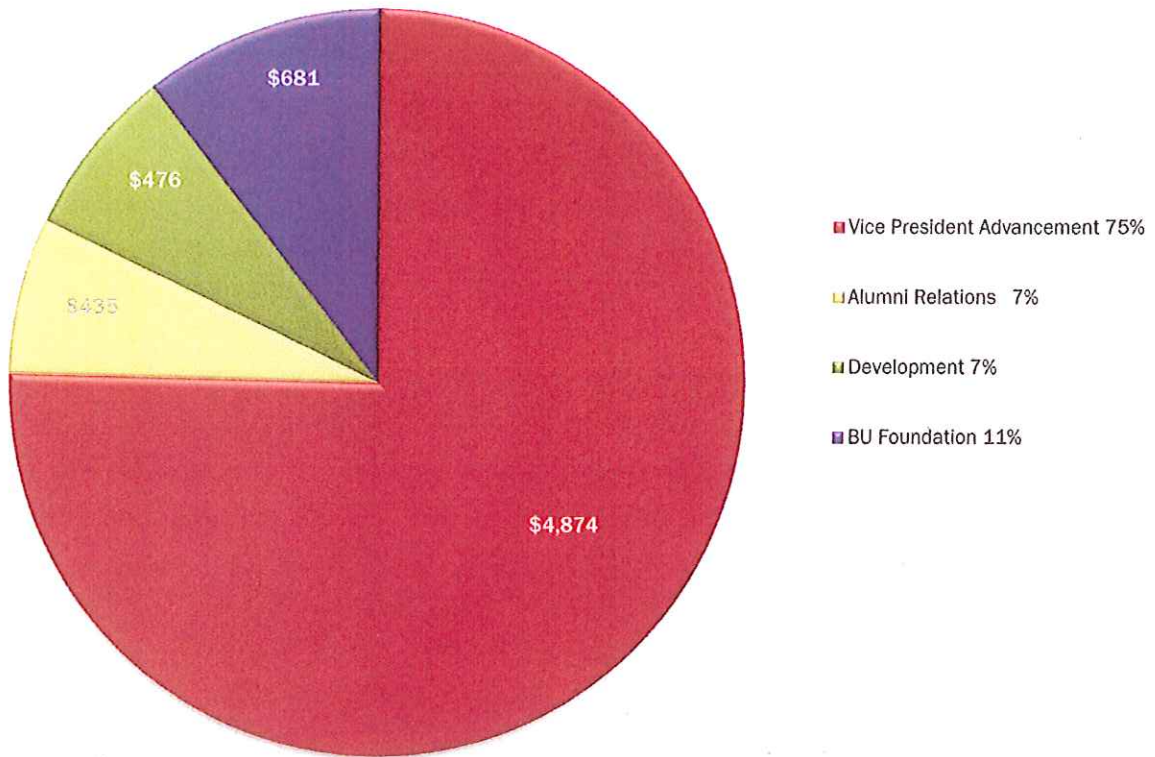
- 1) Amounts are based on campus-based accounting systems and do not reflect all IPEDS adjustments
- 2) Expenditures are classified according to the policies of each respective fund
- 3) Amounts are presented on the cash basis
- 4) State Purpose Expenditures do not include State Debt Service, Fringe Benefits, and centrally applied overheads
- 5) State Purpose funds include Core Budget, SUTRA and Federal Work Study Funds, and Temporary Allocations
- 6) The Vice President column includes the Vice President's Office and BU Foundation Administration
- 7) Communications & Marketing moved to Provost 2013-14 - approximately \$1.64 million



NOT FOR EXTERNAL RELEASE

**BINGHAMTON UNIVERSITY**  
**ADVANCEMENT / BF OPERATING DISBURSEMENTS: ALL FUNDS**  
**FY2013-2014**  
(In Thousands)

**CHART 7**  
11/24/14



**Faculty Senate Bylaws Review Committee**  
**Annual Report 2014-2015**

The committee considered an amendment that dealt with a gap in the Faculty Bylaws, Article VII, on personnel cases [see attachment]. The change clarified the role of a department chair when his/her own personnel case is being considered. The committee voted unanimously in agreement with the wording of the change as proposed by the FSEC.

Respectfully submitted,

Doug Summerville, Electrical and Computer Engineering, Committee Chair

Committee members

Andrew Scholtz, Classics

Sara Reiter, School of Management

William Heller, Political Science

Alistair Lees, Chemistry

Pamela Mischen, president's ex officio appointee

Kelly Wemette, provost's ex officio appointee.

### Motion presented to Faculty Senate 4/21/15

The following motion for changes to the Faculty Bylaws comes approved and recommended by the Faculty Senate Executive Committee.

Rationale: The amendment deals with a gap in the Faculty Bylaws, Article VII, on personnel cases. The Faculty Bylaws do not say anything about the role of a department chair when his/her own personnel case is being considered. These proposed changes fill this gap as follows:

- the Department Chair may not chair the IPC when his/her case is being considered.
- the Department Chair may not participate in the IPC discussions when his/her own case is being considered.
- the Department Chair does not write a report to the UPC on his/her own case.

The proposed amendment matches changes to the Procedures for Personnel Cases issued by the Office of the Provost, being considered by the All-University Personnel Committee.

#### Article VII, Title B, 4b

- b. **The Chairperson.** The chairperson shall be elected by secret ballot from the committee's membership and shall preside, with vote, at committee meetings. The chairperson of a departmentalized academic subdivision may be elected to chair an IPC, except when his or her own case is being considered. ~~but~~ The Department Chair shall serve without vote. ~~The chairperson of an IPC shall not be present when his or her own case is being considered.~~ Deans and Directors of academic units shall not be members of any IPC. *(Approved by faculty in mail ballot in November 1993)*

#### Article VII, Title E, 1d and 1d v.

- d. At the conclusion of its deliberations, the IPC shall conduct a secret ballot on the case under consideration. ~~Although~~ The chair of a departmentalized academic subdivision is a full participant in discussions, except when his or her own case is being considered. ~~that individual shall not~~ The Department Chair has no vote in the IPC. *(Approved by faculty in mail ballot in September 2009)*
- v. ~~The~~ Except when his or her own case is being considered, the department ~~Department~~ Chairperson shall submit an independent written report and recommendation to the UPC through the Dean or Director. T, ~~and~~ this report shall be made available to the members of the Personnel Committee that considered the case, subsequent to the Committee's decision, and to the candidate. *(Approved by faculty in mail ballot in February 1989)*

**Faculty Senate Convocations Committee**  
**Annual Report 2014-2015**

The committee used its charge as the major guide for funding decisions: “bringing programs to campus that enhance and support the intellectual, cultural, and artistic aspects of the academic curriculum, and to focus our efforts toward as diverse a university community as possible”. The committee traditionally has not funded events that did not fit the criteria above or requests for food, receptions, or parties. Publicity, speakers’ fees, or transportation are items that were specifically funded. In addition, events that cater to a variety of groups on campus in general, and undergraduate students in particular, were looked upon favorably by the committee.

The convocations committee is comprised of 4 faculty members, 2 administrative members, 3 Student Association representatives, and a Graduate Student Organization representative. Each new funding request is discussed during committee meetings. Final decisions are made through voting by the committee members. In a great majority of cases, decisions are unanimous. Student members' contributions are invaluable during discussions. As SA representatives, they are closely familiar with most events that request funding and provide unique perspective and insight that contribute to funding decisions.

The funding came from the Presidents’ Office (\$5,375) and the Student Association (\$5,375) for a total of \$10,750. Our available funds for the year, including the carryover from 2014-20015 (\$8,460) and new allocations, totaled \$19,210. Allocations this year totaled \$11,650 (excluding agency fee) leaving a remaining balance of \$7,560 forward into the 2015-2016 academic year.

The Convocations Committee supported 19 events in total. Allocations ranged from a minimum of \$150 to maximum of \$3000. The requests from the 19 sponsored events totaled \$23,222. The committee denied five applications, because the committee unanimously felt that these particular activities did not meet the committee’s criteria for funding.

A detailed documentation of funding sources and allocations is presented below.

**Convocations Committee Funding and Allocations**  
**Fall 2014 – Spring 2015**

Chabad Purium	500
What I BE with Steve Rosenfield	1400
Art History Chris Butler	250
Meet the Artist Diana Tejera	350
Freedman Lecture	400
Challah Bake	300
Crossing Boundaries	300
Black History Month speaker	3000
DR. Pico Lecture LACAS	300
Ted X	1000
Shifting Tides	150
Research Days	500
Entrepreneurship Partnership	400
Human Rights and Global Health	1000
Eating Disorder Awareness Event	150
Chabad 1500	300
Art Awakening	600
Yom Haatzmaut	250
American Chemical Society	500

Respectfully submitted,

Benjamin Andrus, Committee Chair

Committee Members

(Faculty)

Benjamin Andrus

Laura Evans

Donald J Loewen

Serdar Atav

(SA)

Don Greenberg

Alexander Liu

Christopher Zamlout

(Admin)

Jennifer Keegin

Brian Rose

(GSO)

Guy Risko

## **Faculty Senate EOP Committee** **Annual Report 2014-2015**

The Faculty Senate Educational Opportunity Program Committee meets at least twice per academic year and more frequently as needed. Nicole Rouhana, Assistant Professor and Graduate Director at Decker School of Nursing chaired the Committee during the 2014-2015 academic year.

The EOP Program Committee, in addition to EOP Director, Calvin Gantt, meet to discuss policy regarding various student and academic issues, including the selection criteria and support mechanisms for EOP students, promote dialog between EOP and other campus units, including coursework and support services available to EOP students.

At the start of Fall 2014 there were 607 EOP students enrolled full-time. Overall performance statistics for Fall 2014 included: 92% in good academic standing, 46% with at least a 3.0 cumulative average, and only 8% on academic probation. In Spring 2015 there were 565 EOP students enrolled full-time. Overall performance statistics for Spring 2015 included: 94% in good academic standing, 42% with at least a 3.0 cumulative average, and only 6% on academic probation. The EOP graduation rate remains at 76% (based upon 2007 cohort), which is the highest for any EOP Program in the State of New York, and quite comparable to the overall New York State graduation rate.

### **Budget and Productivity.**

EOP staff closely monitored the situation regarding the Perkins loans process which is due to expire 9/15/15. Nonrenewal would negatively impact 38% of students receiving financial support for Binghamton University EOP students. Even with funding, most EOP students have \$4,000 that remains unfunded. Ultimately the Perkins Loans were reinstated on a temporary basis, but has not been renewed on a long term basis.

The NYS Budget had not been released until 4/1/15 and there were continued concerns regarding an anticipated \$1.2 million reduction to EOP Programs statewide. Upon approval of the State Budget, EOP received increased to \$4.5 million in funding which was the first increase noted since 1970. And, due to the strength of the retention and graduation rates of EOP at BU, this could increase EOP funding capacity by 40 FTE for fall 2015. Despite this positive news, it also worth noting that sixty-seven percent of EOP students live off campus due to the cost of campus housing and food. The majority of these students live in College of the Woods or Hinman in an effort to contain costs.

EOP Binghamton Enrichment Program (BEP) was held between 7/5/2015-8/1/2015 for 145 students. The 2014 BEP class was authorized for 130 students and was able to increase to 141 due to high demand and increased support. In an effort to support student success, a new preparatory Chemistry class is also being added this year as a pilot that will most likely be adopted for future summers based on outcomes and evaluation.

### **Current and Future Plans.**

EOP Advocacy Day was held in Albany, New York 2/12/2015 with excellent representation from Binghamton University. This event was well organized. The EOP program will continue to work on increasing representation from the Binghamton University campus for future events by increasing earlier and more frequent calls for participation for both faculty and students.

Increased communication between various schools of Binghamton University was a primary goal of the work accomplished by the Committee during this past academic year. One specific area of need was to expand EOP enrollment in the Decker School of Nursing undergraduate program which had noted a trend in decreased diversity over the last five years. Concerted efforts to increase communication and strengthen processes between EOP and DSON administration resulted in a plan to not only increase nursing enrollment but also support nursing students' academic achievements during the program. This plan also ensures regular communication to facilitate joint decision making as the best pathway to increase nursing enrollment. DSON provides weekly IUT meetings to connect early with BEP candidates interested in nursing for both academic advisement and program planning to ensure a smooth transition into the nursing program. This model can be easily replicated with other programs of study across campus to best support a variety of EOP students.

An ongoing challenge for EOP students is the cost of textbooks. This continues to be of grave concern to the EOP staff. Despite the increase from Albany, the cost for textbooks continues to go up at much greater rate than the allocation we receive. The EOP Office is working on some fundraising initiatives to try and help offset some of these costs for students which may be formalized by the 2015-16 year.

Student representation on the EOP Committee remains robust. A wide range of activities have been proposed and are being reviewed for feasibility based on resources. One goal is the development of an EOP Fair that would represent all programs available on campus and provide an opportunity for the EOP candidate to receive program information in various areas of interest and network with potential future faculty. The creation of a "Brown Bag" series was also discussed as a platform to disseminate information that the EOP students feel could contribute to their on-going success. Lastly, students have expressed the need for increased student engagement with the CDC, particularly as they grow closer to graduation and are seeking employment opportunities.

### **Looking Forward.**

One area for continued growth is the development and expansion of the EOP Professional Careers Day. This event would provide workshops on specific career tracks and would be provided in conjunction with Binghamton University academic units and faculty. Within this program mentorship from upper classmen could be arranged for lower classmen to provide peer to peer support and guidance on an individualized basis.

### **Summary.**

In summary, the Binghamton University Educational Opportunity Program, under the leadership of EOP Director Calvin Gantt, has continued to expand its capacity for increased support and creative solutions to serve a diverse population of students. New courses that support future

success have been put into place and are well received by the student body. There has been an element of reenergized communication among various academic units with EOP that can be replicated to continue to improve enrollment and access to student services.

Respectfully submitted,



Nicole Rouhana,  
Chair, EOP Program Committee

Committee members

Adams Laats  
Bingwei Liu  
Calvin Gantt  
Celia Klin  
Desborne Villaruel  
Dina Maramba  
Isis McIntosh  
Lisa Tessman  
Maria Theresa Romero  
Melinda Momplaisir  
Randall Edouard  
Robert Palmer  
Sabrena Meyers  
Theresa Figuerado-Malay  
Val Hampton



**Faculty Senate Educational Policies and Priorities Committee**  
**Annual Report 2014-2015**

The EPPC met three times during the 2014/2015 academic year to consider curricular and policy matters.

Here is a summary of the policy matters considered by the EPPC and their resolution:

Issue	Discussion	Resolution
A number of parties raised issues with curriculum proposals which rely on the course offering of other departments who may not have been consulted.	While the FSEC assumed that all curriculum proposals going forward would have received the consent of other departments whose courses are listed, this does not always appear to have happened.	At the undergraduate level, the provost's office will now required formal signoffs from other departments for courses designated in new major, new minor and revision of major proposals.

Here is a summary of the policies for faculty review of curriculum passed by the faculty senate in 2012 which are used by the EPPC and FSEC to guide their review of curriculum proposals:

Action	Item
No notification	Routine changes to existing majors, minors, certificates and degree programs that do not require SED approval
Notify EPPC FSEC and/or EPPC may undertake additional review if changes go beyond "routine"	Routine changes to existing majors, minors, certificates and degree programs require SED approval
Notify FSEC and EPPC FSEC and/or EPPC may undertake additional review	Combined degree programs (3-2, 4-1), Dual degree programs, new minors and local certificate programs (tracks)
EPPC acts as a curriculum committee	All proposals for certificates, majors, minors, or other programs that are not reviewed at the college or school level
Full faculty senate review process (starts with EPPC)	New degree programs, suspension or elimination of degree programs, new majors, new certificate-for-licensure programs

The following curricular matters were reviewed in 2014/2015:

The EPPC and FSEC were notified of Letters of Intent for new programs:

- MA in Applied Liberal Studies
- TESOL with and without certification
- MS in Human Rights and Community Research

<b>Routine changes requiring SED approval:</b>	EPPC	FSEC
Electrical Engineering BS and 4 + 1 revisions	Discussed	Reviewed
Change in title of Psychology graduate program	Discussed	Reviewed
BS in Nursing revision	Discussed	Reviewed

<b>Combined, dual degree, new tracks</b>	EPPC	FSEC
Philosophy / MPA 4/1 program	Discussed	Reviewed
Addition of new track in Applied Statistics to the B.A. in Mathematics	Discussed	Reviewed
LACAS MPA 3/2 program	Discussed	Reviewed

<b>New degrees, majors, deactivations, reactivations</b>	EPPC	FSEC	Faculty Senate
MA and MS in Sustainable Communities	Discussed	Discussed	Approved April 21, 2015
WGSS major	Discussed	Discussed	Approved May 5, 2015
Advanced Certificate for Social Work in Health Care	Discussed	Discussed	Approved May 5, 2015

Respectfully submitted,

Sara Reiter, Committee Chair

EPPC Committee members

Sara Reiter, Chair

Alvin Vos

Wendy Martinek

Barbara Wolfe

Laura Anderson

Patrick Madden

Erin Rushton

Don Greenberg

Robert Pim

Alison Coombs

Donald Nieman

Susan Strehle

Donald Loewen

**Faculty Senate Intercollegiate Athletics Committee**  
**Annual Report 2014-2015**

The Faculty Senate Intercollegiate Athletics Committee (IAC) met twice in 2014-15. The committee considered and continued to monitor several matters, as described below, but did not initiate any significant actions or changes.

In both the Fall 2014 and Spring 2015 IAC meetings, Ed Scott presented to the IAC academic reports describing the performance of student-athletes, Reports break down student-athlete academic performance by team for each semester, including overall team GPA, numbers of students falling below established thresholds, etc. Student-athletes continue to perform well academically, achieving above a 3.1 GPA in both 2014 semesters.

The mid-semester academic progress report system, which is used by Athletics (along with several campus groups) is now administered electronically, replacing the former paper-based system. Athletics continues to administer separate progress reporting for basketball and wrestling.

The committee discussed in both meetings the idea of hosting men's and women's basketball games over the weekend that falls during or just prior to the university's final exams. The university calendar makes it difficult to schedule out of conference games in December, so the Athletics Department asked the committee to consider the impact on academics of hosting games during that weekend, which we do not currently do. The committee endorses the Athletics Department's plan to possibly host Saturday or Sunday home games in future semesters, should the opportunity present itself.

The committee briefly considered renewing efforts to institute a "faculty liaison" program, which was initially proposed by Athletics Director Patrick Elliott, and advanced by former FAR Jim Stark. We decided instead to support and help promote a less formal effort whereby student-athletes and the Athletics Department would invite faculty to a handful of athletic contests throughout the year. The purpose will be simply to strengthen the connection and relationships between Athletics and the university faculty.

Other matters, including the incorporation of automated eligibility checking of student-athletes, and the identification and monitoring of special admits, continue to progress to the satisfaction of the directly affected individuals on the IAC, and of the IAC.

Respectfully submitted,

Michael J. Lewis, Committee Chair

Committee members

Neil Christian Pages

Loretta Mason-Williams

Edward Corrado

Andrew Loso (male undergraduate)

Kristen Pozmanter (female undergraduate)

Kaitlyn Calkins (Graduate teaching assistant)

Cindy Cowden (VP for Student Affairs designee)

Shelley Dionne (NCAA Faculty Athletics Representative)

Terry Kane (Chair, Intercollegiate Athletics Board – ex officio)

Ed Scott (Assoc. Athletics Director for Student Services – ex officio)

Michael McGoff (Provost ex-officio member)

David Eagan (Ex-officio member)

Patrick Elliott (Athletics Director – ex-officio)

**Faculty Senate University Undergraduate Curriculum Committee**  
**Annual Report 2014-2015**

During the 2014-2015 academic year, the UUCC continued its work certifying courses that meet Binghamton University General Education requirements and deciding on student petitions related to General Education requirements.

Additional committee activities included:

- Revising the Pluralism in the U.S. requirement to expand the diverse groups considered. The committee met with Nicole Sirju-Johnson from ODEI and with Harpur College undergraduate directors to discuss drafts of the proposed changes. The Chair of the UUCC also met with representatives from Students for Change. The Faculty Senate approved the revised Pluralism requirement on 4/21/15.
- Considering a proposal to waive the Gen Ed Activity (Y) requirement for veterans. After much discussion, the committee decided that waiving the Y requirement would not be a meaningful change to these students' Gen Ed requirements, because most of them would still need to take a Wellness (S) course and would probably take a 2-credit B course that would also fulfill the Y requirement. The committee recommended instead that Academic Affairs Council consider the issue of granting academic credit for military service and other ways that Binghamton could be more veteran-friendly.
- Discussing a proposal from SA representative Robert Pim for a form developed by the Student Association to allow students to notify departments of a course they believe should carry a Gen Ed designation. The committee reviewed drafts of the form and provided guidance. The final version of the downloadable form is available at <http://www.binghamton.edu/general-education/documents/student-course-consideration-form.pdf>.

The Chair and the Committee would like to express its gratitude to Liz Abate, our coordinator of General Education and Senior Assistant for Undergraduate Education in the Provost's Office, for the outstanding assistance and coordination she always provided. And the Chair would like to express his appreciation to the members of the committee who consistently worked through our agenda with collective acumen and good judgment.

Attached, as required, is this year's report on university-wide course offerings under the following rubrics: UNIV, SCHL, OUT, and CDCI.

Respectfully submitted,  
Mark Reisinger, Committee Chair

Committee Members:  
Laura Anderson, Mathematics  
Les Lander, Computer Science  
Hyeyoung Kang, Human Development (Spring semester)  
Ann Merriwether, Human Development (Fall semester)  
Ingeborg Majer-O'Sickey, German and Russian Studies  
Sarah Maximiek, Library  
Carolyn Pierce, Decker School of Nursing  
Robert Pim, undergraduate student  
Sara Reiter, School of Management  
Marissa Sabbath, graduate student  
Liz Abate, Provost's Office  
Lisa Hrehor, Health and Wellness Studies  
Celia Klin, Harpur College Deans Office and Psychology  
Don Loewen, Provost's Office and German/Russian Studies  
Pamela Mischen, President's Office and CCPA

## **Report on University-Wide (UNIV) Course Offerings – 2014-2015 Academic Year**

Attached please find a complete listing of all courses offered during the 2014-2015 academic year under the following rubrics:

- Binghamton Scholars Program – SCHL
- Career Development Center Internships – CDCI
- Outdoor Pursuits - OUT
- University-Wide courses – UNIV

Working with Florenz Plassman, the director of the Office of University-Wide Programs, the UUCC approved the following new UNIV courses:

- Spring 2015:
  - UNIV 280A, Discourse, Dissention, Dialogue, a course designed to foster dialogue on current divisive issues.
- Fall 2015:
  - UNIV 180A, Investigating American Culture by Examining Comic Books, a course in the University Readiness Program for Chinese students.
  - UNIV 280B, New Venture Acceleration, a course taught by the University's Entrepreneur in Residence.
  - UNIV 280D, Science, Technology, Engineering, Arts and Math Seminar, a learning community course in Mountainview Community.
  - UNIV 280E, Social Diversity, Justice and Activism, a learning community course in Mountainview Community.
  - UNIV 380C, ePortfolios, a course in Newing Community taught by an instructional designer from the Center for Learning and Teaching.
- New permanent courses:
  - SCHL 396, Guthrie Premed Internship, an internship program at Guthrie Clinic and Robert Packer Hospital for Binghamton Scholars students.
  - UNIV 297, 397 and 497, Independent Research. These courses were proposed by the University Libraries to allow undergraduate students to pursue independent research with Libraries faculty.

UNIVERSITY-WIDE COURSE OFFERINGS  
2014-2015

Term	Subject	Number	Section	Title	First Name	Last Name	Enrollment	Credits
Fall 2014	CDCI	385	01	Prof Internship Pgm Oral Comm	Felicia	Moreira	12	4
Fall 2014	CDCI	385	03	Prof Internship Pgm Oral Comm	Scott	Bennett	20	4
Fall 2014	CDCI	385	04	Prof Internship Pgm Oral Comm	Veronica	Ogeen	12	4
Fall 2014	CDCI	385	05	Prof Internship Pgm Oral Comm	Erik	Colon	12	4
Fall 2014	CDCI	385	06	Prof Internship Pgm Oral Comm	John	Vassello	20	4
Fall 2014	CDCI	385	07	Prof Internship Pgm Oral Comm	John	Vassello	20	4
Fall 2014	CDCI	385	18	Prof Internship Pgm Oral Comm	Felicia	Moreira	12	4
Fall 2014	CDCI	385	25	Prof Internship Pgm Oral Comm	Courtney	Ignarri	12	4
Fall 2014	CDCI	385	26	Prof Internship Pgm Oral Comm	Courtney	Ignarri	12	4
Fall 2014	CDCI	395	01	Professional Internship Pgm	Jill	Seymour	12	4
Fall 2014	CDCI	395	02	Professional Internship Pgm	John	Vassello	15	2
Fall 2014	CDCI	395	03	Professional Internship Pgm	Nicole	Sirju-Johnson	10	2
Fall 2014	CDCI	395	04	Professional Internship Pgm	Joshua	Perry	15	2
Fall 2014	CDCI	395	05	Professional Internship Pgm	Emily	Love	1	4
Fall 2014	CDCI	395	06	Professional Internship Pgm	Nita	Baldwin	15	4
Fall 2014	CDCI	395	07	Professional Internship Pgm	Joshua	Perry	15	2
Fall 2014	CDCI	395	08	Professional Internship Pgm	Daniel	McCormack	15	4
Fall 2014	CDCI	395	09	Professional Internship Pgm	Daniel	McCormack	15	4
Fall 2014	CDCI	395	10	Professional Internship Pgm	LeAnna	Rice	12	2
Fall 2014	CDCI	395	11	Professional Internship Pgm	Elena	Buttgereit	10	2
Fall 2014	CDCI	395	12	Professional Internship Pgm	Rachel	Cavalari	15	4
Fall 2014	CDCI	395	13	Professional Internship Pgm	Beth	Riley	15	12
Fall 2014	CDCI	395	14	Professional Internship Pgm	Antonio	Frontera	2	4
Fall 2014	CDCI	395	17	Professional Internship Pgm	Bridget	McCanesaunders	24	4
Fall 2014	CDCI	395	20	Professional Internship Pgm	Dara	Raboypicciano	20	2
Fall 2014	CDCI	395	21	Professional Internship Pgm	Kevin	Wright	15	12
Fall 2014	CDCI	395	23	Professional Internship Pgm	Allison	Alden	15	12
Fall 2014	CDCI	395	24	Professional Internship Pgm	David	Hagerbaumer	30	4
Fall 2014	CDCI	395	30	Professional Internship Pgm	Kimberly	King	20	2
Fall 2014	CDCI	395	34	Professional Internship Pgm	Ryan	Yarosh	15	4
Fall 2014	CDCI	395	35	Professional Internship Pgm	Stephen	Rebello	20	2
Fall 2014	CDCI	395	36	Professional Internship Pgm	David	Hagerbaumer	10	2
Fall 2014	CDCI	395	37	Professional Internship Pgm	Lori	Etheridge	30	2
Fall 2014	CDCI	395	38	Professional Internship Pgm	Jaimie	Osborn	30	2
Fall 2014	CDCI	395	39	Professional Internship Pgm	Anthony	Preus	18	2
Fall 2014	CDCI	395	40	Professional Internship Pgm	Dara	Raboypicciano	15	2
Fall 2014	CDCI	395	41	Professional Internship Pgm	Jessica	Krohn	10	4
Fall 2014	CDCI	395	44	Professional Internship Pgm	Jazell	Johnson	15	2
Fall 2014	CDCI	395	45	Professional Internship Pgm	Harvey	Stenger	50	2
Fall 2014	CDCI	491	05	JC Mentor UG Teaching Asst	Dara	Riegel	1	4
Fall 2014	CDCI	496	01	Johnson City Mentor Program	Karen	Cummings	20	2
Fall 2014	CDCI	496	02	Johnson City Mentor Program	Joanna	Cardona	20	2
Fall 2014	CDCI	496	07	Johnson City Mentor Program	Steven	Knepp	20	2
Fall 2014	CDCI	496	09	Johnson City Mentor Program	Erik	Colon	20	2
Fall 2014	CDCI	496	35	Johnson City Mentor Program	Daniel	McCormack	20	2
Fall 2014	CDCI	496	40	Johnson City Mentor Program	Daniel	McCormack	20	2
Fall 2014	OUT	130	01	English Horsemanship	Syd	Davis	12	1
Fall 2014	OUT	130	02	English Horsemanship	Cailin	Elliott	12	1
Fall 2014	OUT	130	03	English Horsemanship	Cailin	Elliott	12	1
Fall 2014	OUT	130	04	English Horsemanship	Cailin	Elliott	12	1
Fall 2014	OUT	130	05	English Horsemanship	Syd	Davis	12	1
Fall 2014	OUT	130	06	English Horsemanship	Cailin	Elliott	12	1
Fall 2014	OUT	131	01	English Horsemanship II	Cailin	Elliott	8	1
Fall 2014	OUT	131	02	English Horsemanship II	Cailin	Elliott	8	1
Fall 2014	OUT	177	01	Hiking	John	Greene	12	1
Fall 2014	OUT	177	02	Hiking	Natalie	Hughes	13	1
Fall 2014	OUT	177	03	Hiking	John	Greene	12	1
Fall 2014	OUT	250	01	Bicycling	Michael	Zuber	10	1
Fall 2014	OUT	252	01	White Water Kayaking	Steven	Busch	11	1
Fall 2014	OUT	255	01	Back Country Medicine	Kevin	Hastings	30	2
Fall 2014	OUT	391	01	Practicum in College Teaching	Kevin	Hastings	20	20
Fall 2014	OUT	391	02	Practicum in College Teaching	Teresa	High	20	20
Fall 2014	OUT	391	03	Practicum in College Teaching	Michael	Zuber	20	20

**UNIVERSITY-WIDE COURSE OFFERINGS**  
**2014-2015**

Fall 2014	OUT	391	04	Practicum in College Teaching	Cailin	Elliott	20	20
Fall 2014	OUT	395	01	Independent Study	Jenna	Moore	20	20
Fall 2014	OUT	395	04	Independent Study	Michael	Zuber	20	20
Fall 2014	OUT	395	05	Independent Study	Teresa	High	20	20
Fall 2014	SCHL	127	01	Thinking Like Leonardo DaVinci	Donald	Blake	26	2
Fall 2014	SCHL	127	02	Thinking Like Leonardo DaVinci	Donald	Blake	25	2
Fall 2014	SCHL	127	03	Thinking Like Leonardo DaVinci	Ann	Merriwether	25	2
Fall 2014	SCHL	127	04	Thinking Like Leonardo DaVinci	April	Thompson	26	2
Fall 2014	SCHL	280A	01	Evolutionary Psychology	Joseph	Morrissey	20	4
Fall 2014	SCHL	280C	01	American Wastes	Joshua	Reno	20	4
Fall 2014	SCHL	280D	01	Tech & Impact of Solar Energy	Wayne	Jones	20	4
Fall 2014	SCHL	280E	01	Plantation Landscapes	Dale	Tomich	19	4
Fall 2014	SCHL	280G	01	Ghosts in American Culture	Elizabeth	Tucker	20	4
Fall 2014	SCHL	280H	01	EMod Court Culture in Europe	Andrew	Walkling	20	4
Fall 2014	SCHL	327	01	Schlr3: Worlds of Experience	William	Ziegler	100	0
Fall 2014	SCHL	391	01	Scholars Teaching Practicum	William	Ziegler	7	2
Fall 2014	SCHL	395	01	Scholars Internship	William	Ziegler	5	4
Fall 2014	SCHL	397	01	Scholars Independent Study	William	Ziegler	10	4
Fall 2014	SCHL	427	01	Scholars 4: Capstone	William	Ziegler	100	0
Fall 2014	UNIV	180A	01	College Transition-Freshmen 01	Brianna	King	20	2
Fall 2014	UNIV	180A	02	College Transition-Freshmen 02	Shannon	Gallo	20	2
Fall 2014	UNIV	180A	03	College Transition-Freshmen 03	Michelle	Jones	20	2
Fall 2014	UNIV	180A	04	College Transition-Freshmen 04	Heather	Miller	20	2
Fall 2014	UNIV	180A	05	College Transition-Freshmen 05	Elizabeth	Staff	20	2
Fall 2014	UNIV	180A	06	College Transition-Freshmen 06	Jazell	Johnson	20	2
Fall 2014	UNIV	180B	01	College Trans - CIW Freshmen	Nicole	Riley	18	2
Fall 2014	UNIV	180B	02	College Trans - DKN Freshmen	Elizabeth	Staff	20	2
Fall 2014	UNIV	180B	03	College Trans - HIN Freshmen	Christopher	Cullinane	20	2
Fall 2014	UNIV	180B	04	College Trans - MTV Freshmen	Leah	Shaw	20	2
Fall 2014	UNIV	180B	05	College Trans - NWG Freshmen	Tyler	Lenga	20	2
Fall 2014	UNIV	180C	01	College Transition-Transfers01	Zachary	Dubord	25	2
Fall 2014	UNIV	180D	01	College Trans - AC Transfers	Peter	Nardone	25	2
Fall 2014	UNIV	180E	01	College Trans - ESL Students	Erik	Colon	20	2
Fall 2014	UNIV	180F	01	College Trans - DI Athletes 01	Linda	Reynolds	20	2
Fall 2014	UNIV	180F	02	College Trans - DI Athletes 02	Linda	Reynolds	20	2
Fall 2014	UNIV	180G	01	College Trans - SSS Student 01	Stephen	Rebello	20	2
Fall 2014	UNIV	180G	02	College Trans - SSS Student 02	Marissa	Zelman	20	2
Fall 2014	UNIV	180G	03	College Trans - SSS Student 03	Jeremy	Toulon	20	2
Fall 2014	UNIV	180G	04	College Trans - SSS Student 04	Regina	Alfieri	20	2
Fall 2014	UNIV	380A	01	The Binghamton Microcosm	David	Wilson	25	4
Spring 2015	CDCI	385	06	Prof Internship Pgm Oral Comm	Luann	Kida	25	4
Spring 2015	CDCI	385	07	Prof Internship Pgm Oral Comm	Luann	Kida	25	4
Spring 2015	CDCI	385	11	Prof Internship Pgm Oral Comm	Felicia	Moreira	12	4
Spring 2015	CDCI	385	12	Prof Internship Pgm Oral Comm	Felicia	Moreira	12	4
Spring 2015	CDCI	385	15	Prof Internship Pgm Oral Comm	Veronica	Ogeen	12	4
Spring 2015	CDCI	385	16	Prof Internship Pgm Oral Comm	Erik	Colon	15	4
Spring 2015	CDCI	385	18	Prof Internship Pgm Oral Comm	Scott	Bennett	20	4
Spring 2015	CDCI	385	20	Prof Internship Pgm Oral Comm	Courtney	Ignarri	10	4
Spring 2015	CDCI	385	38	Prof Internship Pgm Oral Comm	Courtney	Ignarri	10	4
Spring 2015	CDCI	395	01	Professional Internship Pgm	Luann	Kida	10	2
Spring 2015	CDCI	395	02	Professional Internship Pgm	Jill	Seymour	12	4
Spring 2015	CDCI	395	03	Professional Internship Pgm	Dara	Raboypicciano	15	12
Spring 2015	CDCI	395	04	Professional Internship Pgm	Joshua	Perry	10	2
Spring 2015	CDCI	395	05	Professional Internship Pgm	Kevin	Wright	10	12
Spring 2015	CDCI	395	06	Professional Internship Pgm	Nicole	Sirju-Johnson	15	2
Spring 2015	CDCI	395	07	Professional Internship Pgm	LeAnna	Rice	12	2
Spring 2015	CDCI	395	08	Professional Internship Pgm	Daniel	McCormack	15	4
Spring 2015	CDCI	395	09	Professional Internship Pgm	Daniel	McCormack	15	4
Spring 2015	CDCI	395	10	Professional Internship Pgm	Elena	Buttgereit	15	2
Spring 2015	CDCI	395	11	Professional Internship Pgm	Antonio	Frontera	5	4
Spring 2015	CDCI	395	12	Professional Internship Pgm	Jessica	Krohn	10	4
Spring 2015	CDCI	395	14	Professional Internship Pgm	Peter	Nardone	5	2
Spring 2015	CDCI	395	17	Professional Internship Pgm	Amber	Ingalls	15	4
Spring 2015	CDCI	395	18	Professional Internship Pgm	Rachel	Cavalari	16	4



UNIVERSITY-WIDE COURSE OFFERINGS  
2014-2015

Spring 2015	CDCI	395	19	Professional Internship Pgm	Ryan	Yarosh	15	4
Spring 2015	CDCI	395	20	Professional Internship Pgm	Dara	Raboypicciano	20	12
Spring 2015	CDCI	395	22	Professional Internship Pgm	Lori	Etheridge	30	2
Spring 2015	CDCI	395	25	Professional Internship Pgm	Joshua	Perry	10	2
Spring 2015	CDCI	395	26	Professional Internship Pgm	David	Hagerbaumer	30	4
Spring 2015	CDCI	395	27	Professional Internship Pgm	Nita	Baldwin	16	4
Spring 2015	CDCI	395	31	Professional Internship Pgm	Allison	Alden	15	12
Spring 2015	CDCI	395	34	Professional Internship Pgm	Kimberly	King	10	2
Spring 2015	CDCI	395	36	Professional Internship Pgm	Stephen	Rebello	20	2
Spring 2015	CDCI	395	37	Professional Internship Pgm	Emily	Love	10	4
Spring 2015	CDCI	395	38	Professional Internship Pgm	Jaimie	Osborn	30	2
Spring 2015	CDCI	395	44	Professional Internship Pgm	Jazell	Johnson	15	2
Spring 2015	CDCI	395	48	Professional Internship Pgm	Harvey	Stenger	50	2
Spring 2015	CDCI	491	05	JC Mentor UG Teaching Asst	Dara	Riegel	1	4
Spring 2015	CDCI	496	02	Johnson City Mentor Program	Melissa	Lawson	25	2
Spring 2015	CDCI	496	04	Johnson City Mentor Program	Joanna	Cardona	25	2
Spring 2015	CDCI	496	07	Johnson City Mentor Program	Steven	Knepp	25	2
Spring 2015	CDCI	496	08	Johnson City Mentor Program	Erik	Colon	25	2
Spring 2015	CDCI	496	35	Johnson City Mentor Program	Daniel	McCormack	25	2
Spring 2015	CDCI	496	36	Johnson City Mentor Program	Daniel	McCormack	25	2
Spring 2015	OUT	122	01	Skiing/Snowboarding	Teresa	High	100	1
Spring 2015	OUT	122	02	Skiing/Snowboarding	Steven	Busch	150	1
Spring 2015	OUT	122	03	Skiing/Snowboarding	Teresa	High	100	1
Spring 2015	OUT	122	04	Skiing/Snowboarding	Steven	Busch	200	1
Spring 2015	OUT	130	01	English Horsemanship	Syd	Davis	12	1
Spring 2015	OUT	130	02	English Horsemanship	Cailin	Elliott	12	1
Spring 2015	OUT	130	03	English Horsemanship	Cailin	Elliott	12	1
Spring 2015	OUT	130	04	English Horsemanship	Cailin	Elliott	12	1
Spring 2015	OUT	130	05	English Horsemanship	Syd	Davis	12	1
Spring 2015	OUT	130	06	English Horsemanship	Cailin	Elliott	12	1
Spring 2015	OUT	131	01	English Horsemanship II	Cailin	Elliott	8	1
Spring 2015	OUT	131	02	English Horsemanship II	Cailin	Elliott	8	1
Spring 2015	OUT	174	01	Tree Climbing	Benjamin	Carver	8	1
Spring 2015	OUT	176	01	Fly Fishing	Gary	Romanic	12	1
Spring 2015	OUT	177	01	Hiking	John	Greene	12	1
Spring 2015	OUT	177	02	Hiking	Kishan	Zuber	12	1
Spring 2015	OUT	177	03	Hiking	John	Greene	13	1
Spring 2015	OUT	177	04	Hiking	Natalie	Hughes	12	1
Spring 2015	OUT	250	01	Bicycling	Michael	Zuber	12	1
Spring 2015	OUT	252	01	White Water Kayaking	Steven	Busch	12	1
Spring 2015	OUT	255	01	Back Country Medicine	Kevin	Hastings	30	2
Spring 2015	OUT	260	01	Winter Camping & Travel Skills	Michael	Zuber	9	1
Spring 2015	OUT	391	01	Practicum in College Teaching	Teresa	High	10	20
Spring 2015	OUT	391	02	Practicum in College Teaching	Michael	Zuber	10	20
Spring 2015	OUT	391	03	Practicum in College Teaching	Kevin	Hastings	10	20
Spring 2015	OUT	391	04	Practicum in College Teaching	Cailin	Elliott	10	20
Spring 2015	OUT	391	05	Practicum in College Teaching	Steven	Busch	10	20
Spring 2015	OUT	395	01	Independent Study	Patti	Dowd	20	20
Spring 2015	OUT	395	04	Independent Study	Michael	Zuber	6	20
Spring 2015	OUT	395	05	Independent Study	Teresa	High	12	20
Spring 2015	SCHL	227	A 0	Leadership, Proj Mgt, Service	Peter	Nardone	98	2
Spring 2015	SCHL	280A	02	Peace A Historical Perspective	George	Catalano	24	4
Spring 2015	SCHL	280B	01	Project Management	Chad	Nixon	22	4
Spring 2015	SCHL	280C	01	Buddha Mind, Buddha Brain	Peter	Donovick	12	4
Spring 2015	SCHL	280F	01	Of Wolves and Myths	George	Catalano	12	4
Spring 2015	SCHL	280G	01	International Business	Anna	Addonisio	27	4
Spring 2015	SCHL	280H	01	Philanthropy & Civil Society	David	Campbell	25	4
Spring 2015	SCHL	280I	02	Military Industrial Complex	Joshua	Reno	22	4
Spring 2015	SCHL	298	01	Intermediate Undergrad Project	William	Ziegler	7	4
Spring 2015	SCHL	299	01	Intermed Undergrad Research	William	Ziegler	7	4
Spring 2015	SCHL	327	01	Schlr3: Worlds of Experience	William	Ziegler	100	0
Spring 2015	SCHL	391	01	Scholars Teaching Practicum	Peter	Nardone	7	2
Spring 2015	SCHL	395	01	Scholars Internship	William	Ziegler	5	4
Spring 2015	SCHL	397	01	Scholars Independent Study	William	Ziegler	10	4

UNIVERSITY-WIDE COURSE OFFERINGS  
2014-2015

Spring 2015	SCHL	427	01	Scholars 4: Capstone	William	Ziegler	100	0
Spring 2015	SCHL	498	01	Advanced Undergrad Project	William	Ziegler	7	4
Spring 2015	SCHL	499	01	Advanced Undergrad Research	William	Ziegler	7	4
Spring 2015	UNIV	101	01	College Students in Transition	Zachary	Dubord	25	2
Spring 2015	UNIV	101	02	College Students in Transition	Peter	Nardone	25	2
Spring 2015	UNIV	280A	01	Discourse,Dissention, Dialogue	Michael	West	25	1
Summer 2014	CDCI	200	01	Bridging Academics to Careers	Holly	Horn	15	2
Summer 2014	CDCI	200	02	Bridging Academics to Careers	Wren	Fritsky	15	2
Summer 2014	CDCI	395	01	Professional Internship Pgm	Laura	ONeill	35	12
Summer 2014	CDCI	395	02	Professional Internship Pgm	Erin	Jennings	35	12
Summer 2014	CDCI	395	04	Professional Internship Pgm	Robert	Danberg	40	2
Summer 2014	UNIV	180A	01	College Transit-D1 Athletes	Heather	Miller	20	2
Winter 2015	CDCI	200	01	Bridging Academics to Careers	Erin	Jennings	15	2
Winter 2015	CDCI	200	02	Bridging Academics to Careers	Dara	Riegel	15	2
Winter 2015	CDCI	200	03	Bridging Academics to Careers	Kelli	Smith	15	2
Winter 2015	CDCI	395	01	Professional Internship Pgm	Laura	ONeill	30	12

## **Faculty Senate Academic Computing & Educational Technology (ACET) Committee**

### **Annual Report 2014-2015**

In 2014-15 the ACET committee met five times. A summary of the committee's deliberations and recommendations follows.

#### **High-Performance Academic Computing**

As a follow-up to issues that arose during 2013-14, the committee continued to explore campus needs in high-performance academic computing (HPAC). Prof. Ken Chiu and Donald Loewen worked together to initiate a survey of numerous departments and their faculty about their present and anticipated needs in HPAC. Prof. Chiu compiled the results and shared them with the committee; the findings generated considerable discussion about the importance of HPAC for many faculty members who plan to increase their computational research. The committee is concerned about the lack of a central campus plan for HPAC. One result of the committee's work was a Road Map proposal developed by Prof. Chiu and submitted through the Research Foundation, with a request for additional campus funds to be devoted to HPAC needs.

#### **Blackboard**

Another substantive upgrade for Blackboard Learn was completed during the summer of 2014, and the database was virtualized at the end of the Fall 2014 semester in order to be current with updated Blackboard technical requirements. The upgrades were completed with minimal impact on campus users. In addition, communication and implementation plans were made for virtualization of the application servers in July 2015. Finally, a group that includes Banner and Blackboard experts began to meet to develop closer integration between Blackboard and Banner, with a particular focus on user adds/drops and grade export from Blackboard to Banner.

One concern that continues to grow is the amount of video content being stored in Blackboard courses by instructors. The Blackboard system is not intended for storage and distribution of media content on a broad scale, and the Blackboard oversight committee spent considerable time searching for other possible solutions to this issue.

#### **Streaming-media servers, video creation and distribution**

After the Blackboard oversight committee started to review various media server solutions/platforms, it became clear that the benefits of a potential solution would be greatly expanded if any server solution would be adopted broadly across campus, rather than just in connection with Blackboard usage. As a result, vice provost Donald Loewen assembled a campus-wide task force (including several ACET members among the faculty and staff participants and co-chaired by Paula Russell and Eric Howd of the CLT ) to examine media server solutions and recommend a solution for the University. After meeting through much of the Spring 2015 semester, the task force recommended that the University conduct campus-wide pilots of Kaltura and Panopto during the 2015-16 academic year. These pilots will be initiated in Fall 2015 and broad participation will be encouraged in order to determine which solution meets campus needs best.

### **Software adoption on campus**

The committee continued to discuss various issues related to campus software needs, including how to identify broadly needed software and the funding sources to acquire and support the software. As noted in last year's report, there has not been a formal procedure to provide specific guidelines for centrally implemented as opposed to departmental or individual software. In particular, the committee looked at the specific case of a University-wide license for Lynda.com, a site that provides video lessons for many widely used software products that are used in many campus environments. The committee discussed the possibility of a pilot, of waiting for a possible SUNY-wide license, or of more limited campus implementation. No resolution was achieved, and as a result campus usage was limited to a single test account in the Center for Learning and Teaching.

### **ITS leadership**

Vice President and interim CIO appointed a search committee, chaired by J. Pitarresi, to search for a new Chief Information Officer. As a result, Sharon Pitt was hired as new CIO and is scheduled to begin in July 2015. The committee looks forward to working with her in 2015-16.

### **Classroom renovations and upgrades**

Regular upgrades and renovations to classrooms continue. In addition to these regular upgrades, the initial responses by faculty and students to the CLT's new "learning studio" are being used to shape plans for the new classrooms to be developed in the Student Wing renovation project. The Student Wing classrooms will begin to be available for scheduling in Fall 2015; these will be classrooms on the third floor and the design will be substantially the same as before the structural renovation, but with updated technology. More significant changes in design and technology will be made in the new classrooms on the first and second floors, which are expected to be functional by Fall 2016.

### **Online Learning**

In follow-up to the proposals submitted by the 2014 online task force, several recommendations were implemented. Most significant of these was the first round of instructor training workshops. The workshops were developed by the CLT's instructional designers and included both regular faculty members and graduate students. Participants received an initial stipend for their participation in the two-day training sessions and can receive an additional stipend after completing follow-up work that demonstrates implementation of the principles learned during the workshops. Approximately 50 graduate students and 25 faculty participated in one of the four workshops offered throughout the semester. Funding was provided for the instructor stipends by the Provost's Office.

In addition, an online learning module for students was developed by the CLT's Eric Howd and Murnal Abate. The module teaches students skills and concepts that will help them to be more successful in an online course environment. The module was well received and won a national award for excellence from the North American Association of Summer Sessions.

Respectfully submitted,

Donald Loewen, 2014-15 Committee Chair

Committee members

Anna Addonizio

James Burns

Ken Chiu

Edward Corrado

Don Greenberg

Tongshu Ma

Cheryl Monachino

JoAnn Navarro

James Pitarresi

Norman Quinn

Frank Saraceno

Kathleen Sterling

Andrew Tucci

Stephen Zahorian

**Committee for the University Environment**  
**Annual Report 2014-2015**

The Committee held two meetings this year. Our major business this year included:

**1. Deer Overpopulation on University Property**

CUE's last several annual reports have addressed the problem of an overpopulation of deer in the Nature Preserve and Natural Areas. The Committee had recommended a cull of the deer, but this action was stayed at the last minute in December 2012 by a lawsuit. President Stenger, new in January 2013, had asked for and funded an infrared survey of deer populations, which was completed in March 2013. On this basis, the Committee asked for the cull to be carried out in December 2014. This request was denied by the Administration on the basis of lack of certainty of its effectiveness and the perception that it would generate major negative publicity. The president, however, did offer to fund some investigative projects. A proposal, prepared by a group of Biology and Environmental Studies faculty members, students, and staff was presented to the President in March 2015. The President agreed to fund some materials for enclosures (fenced enclosures to exclude deer) to measure changes in the forest understory in the absence of browsing by deer. This plan was approved by the CUE and will be implemented in Fall 2015.

**2. New Artificial Turf Field**

The Committee reviewed plans for replacement of the grassy recreational field just east of Bartle Drive with an artificial turf field. This would allow sports when a natural field would be saturated by rainfall (typically spring) and either play is forbidden or fields get heavily damaged. A complex subfield area would filter and retain runoff, and lights will have shields to reduce light pollution. Solar panels were considered inadequate for the power needs of the lights, especially during the late fall and winter. No trees would be cut, and some added. The CUE approved the plan.

**3. Climate Action Plan**

In response to a request by the Committee, Sally Oaks presented an update on the Climate Action Plan prepared on 2009. One of the Plan's goals was a 35% reduction in greenhouse-gas emissions (GHG) as purchased electricity by 2030. Despite a one million square foot increase in the University's footprint, the reduction in electricity purchase has already been met, 15 years early, largely through efficiency increases during building construction and in lighting. A second goal was a 32-42% reduction in net GHG emissions via (a) conversion from burning coal to burning wood chips and some natural gas in the central heating plant, and (b) construction of natural gas heating in all residences. This is progressing and the contract for purchase of coal will be terminated in 2016. The third major goal was a reduction in the GHG emissions caused by commuting to and from the University. Little progress has been made toward this goal: a pilot program to encourage car-sharing was not successful.

**4. Renovation of Campus roads and walkways for greater safety**

Nick Corcoran (Campus landscape architect) presented plans for these renovations, which include eliminating some sidewalks, widening others, constructing speed bumps, and better lighting at crosswalks. Some trees will be planted to replace eliminated walkways, and although no cutting of trees is anticipated, the CUE will be consulted if this becomes desirable. The CUE supported the plan.

**5. Open Vice-Chair position**

The FS by-laws state that the Vice Chair of this committee is the Vice President for Administration. This latter position was eliminated in the past year, so a new assignment needs to be made that reflects the joint faculty-administration nature of the committee.

Submitted by Julian Shepherd, Chair



Committee members: JJ Brice, Lee Cummings, Ariana Gerstein, Joseph Graney, Dylan Horvath, Kim Jaussi, Danielle Lord, Sally Oaks, Carolyn Pierce, Julian Shepherd (Chair). Visitor: Nick Corcoran (Physical Facilities).

**Faculty Senate Committee on Committees**  
**Annual Report 2014-2015**

Committee on Committees met in April to fill vacancies for expiring terms and to identify chairs for the upcoming year. Each Faculty Senate committee's membership for the 2014/15 year was reviewed as well as the responses of the *Survey of Faculty Interest in Serving on Committees* which had been distributed electronically in March. Potential members were contacted by CoC, and the names of those who agreed to serve were forwarded to the Faculty Senate Executive Committee for approval.

Most committee assignments were complete when the new academic year began; faculty members generally indicated availability when they were asked in May about service for the upcoming year. The CoC chair faced challenges in filling vacancies that arose after classes began in the fall. Many faculty members expressed reluctance to take on additional responsibilities, citing increasing demands in workload and expectations for tenure.

The committee chair met with the chair of the Faculty Senate Executive Committee in October to share the feedback that was received when declining a committee membership, and to discuss ways to encourage participation in campus governance, especially by junior faculty.

Respectfully submitted,

Caryl Ward, Committee Chair

Committee members

Manas Chatterji, School of Management  
Candace Mulcahy, Graduate School of Education  
Elizabeth Di Gangi, Anthropology  
Leslie Lander, Computer Science  
Ariana Gerstein, Cinema  
Stephanie Hess, Libraries

**Faculty Senate Evaluation Coordinating Committee**  
**Annual Report 2014-2015**

During the academic year 2014-2015, the Evaluation Coordinating Committee (ECC) conducted the evaluation of two administrators: Hari Srihari, Dean of the Watson School of Engineering, and Anne McCall, Dean of Harpur College. During the evaluation of Dean Srihari, Scott Craver recused himself as chair to avoid a conflict of interest, and Sara Reiter served as chair during that semester.

The evaluation of Anne McCall occurred earlier than scheduled, with the ECC directed by the Faculty Senate Executive Committee to conduct this evaluation ahead of schedule. We have received several suggestions for amending the timeline for an administrator's evaluation, so as to initially evaluate administrators earlier. This is an issue that should be discussed by the Faculty Senate or Faculty Senate Executive Committee.

This committee was also scheduled to conduct a review of Thomas Kowalik, previously director of Continuing Education and Summer Programs, but his position has changed substantially, and Summer and Winter programs are now managed by a different administrative unit. The set of administrators subject to periodic evaluation appears to have changed; indeed, the ECC's charge according to the bylaws mentions specific administrative roles, including the "Director for Continuing Education and Summer Programs," a position that appears to have been removed by administrative reorganization. This is also an issue that should be discussed by the Faculty Senate or Faculty Senate Executive Committee.

Respectfully submitted,

Scott Craver, Committee Chair

Committee members

John Baust  
Leslie Gates  
Sara Reiter  
Colleen Hailey  
Jonathan Karp  
Michael Lawson  
Carolyn Pierce  
Hoe Kyeong Kim



## **Faculty Athletics Representative Summary** **Annual Report 2014-2015**

Shelley Dionne was named Faculty Athletics Representative (FAR) in January, 2015. She began scheduled monthly meetings with Director of Athletics Patrick Elliott in January, as well as regular contact with Assistant Provost for Athletics Compliance and Associate Director of Athletics, David Eagan and Senior Associate Athletic Director, Ed Scott. Based on the NCAA's Faculty Athletics Representative Handbook, key FAR roles include verifying student eligibility for athletics participation and financial aid, monitoring academic progress and performance of all student-athletes, and participation in a comprehensive compliance program. Reports for those key areas are presented below.

**Eligibility.** Initial and continuing academic and financial eligibility is assessed each semester, for every student-athlete, with data generated from the Office of Student Records. Binghamton University's student-athlete GPA eligibility requirement (2.0) for participation (at the start of each academic year) exceeds those established by the NCAA, where eligibility GPA ranges from 1.8 to 2.0 depending on year of enrollment. Despite GPA standards more stringent than NCAA requirements, greater than 99% of BU's student-athletes were eligible for participation and/or competition during both Fall 2014 and Spring 2015.

**Academic Performance.** BU's student-athletes maintained an average 3.10 GPA for Academic Year 2014-2015, with female student-athletes averaging a 3.19 GPA, male student-athletes averaging a 3.00 GPA, and minority student-athletes averaging at 3.01 GPA (reports compiled by Office of Institutional Research). By comparison, BU's undergraduate student GPA average (university-wide) is 3.19. The top three majors for BU student-athletes are Management (19.9%), Psychology (12.6%) and Biology (10.0%). Notable achievements for BU student-athletes this academic year were 18 consecutive semesters with an average GPA exceeding 3.0, and 35 scholar/athletes awards presented by the America East Conference. Additionally, based on a multi-year Academic Progress Rate (APR) measure for eligibility, graduation and retention, women's cross country, golf, women's soccer and women's indoor track and field received NCAA academic recognition for achieving APR rates which placed these four BU teams among the top 10% in the nation for their respective sports.

**Compliance.** All reported violations were examined by the FAR through a direct link to the NCAA database. Violations for Spring 2015 were self-reported by BU, and either assigned the lowest classification of violation (i.e., Level 3) reflecting a minor infraction, or were dismissed by the NCAA as non-violations. For each Level 3 violation, BU proposed corrective action which the NCAA subsequently ruled acceptable. Additionally, the NCAA completed a routine audit/review of BU's NCAA Division I Academic Performance Program (APP) data. Reviewed categories included financial aid, retention, eligibility, graduation and various reporting processes. NCAA findings indicated BU had "substantial conformity with NCAA Division I Committee on Academic Policies and Procedures" within every evaluated category.

Respectfully submitted,

Shelley Dionne, Faculty Athletics Representative



---

---

# 2015 FACULTY ATHLETICS REPRESENTATIVE REVIEW

---

---

---

## 1. ENSURE STUDENT ELIGIBILITY FOR NCAA, CONFERENCE & UNIVERSITY

---

---

- Confirm initial and continuing academic eligibility (reports prepared by office of Assistant Provost for Athletics Compliance)
  - Includes eligibility for practice, financial aid and intercollegiate competition
  - Reviewed for each athlete on each team (by semester)
- Verify student data generated directly from Office of Student Records (Registrar)

---

---

## 2. MONITOR ACADEMIC PREPARATION AND PERFORMANCE OF STUDENT ATHLETES

---

---

- Review academic performance for each team (reports prepared by Office of Institutional Research; data generated from Office of Student Records)
  - Intercollegiate Athletics Committee (IAC) meeting (4/17/15)
    - ♦ Academic performance reports: Senior Associate Athletic Director
- Notable Student-Athlete Academic Achievements
  - NCAA Recognition for Top Ten Academic Performance Rate
    - ♦ Women's Cross Country
    - ♦ Women's Indoor Track & Field
    - ♦ Women's Soccer
    - ♦ Golf (Men's)
  - 35 America East Scholar Athletes Honored
  - 18 consecutive semesters of 3.0 GPA for Bearcat Athletics
- Facilitate scholarship applications, academic award nominations, and/or recommendations as needed for BU student-athletes

### 3. MONITOR COMPLIANCE ACTIVITIES AND RESPONSIBILITIES

---

---

- Notification of all compliance violations (self-report and/or reported) from office of Assistant Provost for Athletics Compliance
  - ◆Ongoing awareness of NCAA compliance violations review processes, findings and recommendations
  - ◆Monitor processes in place to implement/adhere to limitations in athletic abilities as directed by NCAA
- Review travel and competition schedules (prior to semester start)
- Comprehensive rules education program and compliance processes maintained (via office of Assistant Provost for Athletics Compliance)
  - ◆Receive educational pamphlets, daily e-mails on compliance education, meeting attendance, etc.

### 4. KNOWLEDGE OF NCAA AND CONFERENCE RULES

---

---

- NCAA Division I Operating Manual (2014-2015)
  - ◆Academic Eligibility (Bylaw 14)
  - ◆Recruiting (Bylaw 13)
  - ◆Financial Aid (Bylaw 15)
- America East Conference operating rules as required

### 5. DIRECT CONTACT WITH STUDENT ATHLETES

---

---

- Active membership on Student-Athlete Advisory Board
  - ◆Fall 2015
- Attend orientation for entering student-athletes
  - ◆Fall 2015
- Review exit interviews for graduating/departing student-athletes
  - ◆Fall 2015
- Attend athletic events (Men's and Women's teams)
  - ◆Fall 2015

## 6. MAINTAIN CONTACT WITH ADMINISTRATION

---

---

- Monthly meetings and/or regular contact with Athletic Director
- Annual FAR Report
  - ◆President's Office
  - ◆Athletic Director
  - ◆Faculty Senate Executive Committee
- Active athletic committee memberships
  - ◆Intercollegiate Athletics Board (IAB) (meeting: 5/4/15)
  - ◆Intercollegiate Athletics Committee (IAC) of Faculty Senate (meeting: 4/17/15)

## 7. CONFERENCE REPRESENTATION

---

---

- America East Conference
  - ◆June 2016

---

### KEY:

---

- Indicates FAR engagement within standard
  - Indicates no FAR engagement initiated within standard
- (Note: below non-engaged standards are proposed dates for initiating FAR engagement)*
-

**Intercollegiate Athletics Board**  
**Annual Report 2014-2015**

IAB meetings were held during the fall 2014 and spring 2015 semesters.

Topics of discussion included athletics operating budget, branding of merchandise, scholarship allocations, NCAA revenue distribution, cost of attendance, graduate students and athletic student fees, compliance in athletics, update on APR, the equity in athletics disclosure act, the bi-annual audit process, the Knight Commission, and concussion research currently being conducted. A tour of the Events Center athletic facilities was provided.

Full meeting agendas and meeting minutes can be found at [www.binghamton.edu/iab/agenda-minutes.html](http://www.binghamton.edu/iab/agenda-minutes.html)

Respectfully submitted,

Terrence M. Kane, Committee Chair

Committee members

Faculty

Leslie Heywood  
Michael Pettid  
J. Koji Lum  
Michael Lewis  
David Warner  
Shelley Dionne

Students

Jake Thomas  
Griffin Mciver  
Kristin Ross  
Callon Williams

Designee of VP for Student Affairs

Johann Fiore Conte

Alumni Assoc. Member

Gerald Mollen

Ex-Officio with vote

Alexander Liu  
Tom Sheehan

Ex-Officio without vote

Patrick Elliot

Chair

Terrence Kane