

FACULTY SENATE
COMMITTEE ANNUAL REPORTS

2010-2011

Standing Committees

Budget Review
Bylaws Review
Convocations
Educational Policy and Priorities
EOP Advisory
Intercollegiate Athletics
Library
Professional Standards
University Undergraduate Curriculum

Joint Committees

Academic Computing and Educational Technology
Committee for the University Environment

Other

Committee on Committees
Evaluation Coordinating Committee

**Faculty Senate Budget Review Committee
Annual Report for Financial Year 2010-11**

The Budget Review Committee (BRC) met seven times in the course of AY 2010-11: November 6, December 16, February 25, March 4, April 15, May 6, and July 19. These meetings were devoted to three main issues: 1) an examination of the annual expenditures report for AY 2009-10, 2) ways in which BU was dealing with repeated reductions in financial support from New York State, and 3) spending priorities for AY 2012-13.

- 1) Attached to this report is the annual expenditures report for AY 2009-10. As has been the case for the past ten years now, this report embodies an “all-funds” approach to financial resources. In other words, it breaks out expenditures on the basis of specified spending units, such as divisions (headed by vice-presidents) and colleges (headed by deans), and according to the broadly-defined nature or source of the money spent. The first page explains these different types of income. The second page provides serial data for the past five years. Overall growth in spending in that period has been modest (22 % not adjusted for inflation). The most significant growth came in sponsored research (up 37 %), although that source of support has only grown from 11 % to 13 % of BU’s expenditures. In short, BU remains highly dependent on financial support appropriated by New York State (i.e. tax dollars and tuition combined), but that amount declined \$5 million (as a source of expenditures) in a single year. Further reductions will be reflected in the expenditures report for FY 2009-10. It should also be noted that spending in the Division of Academic Affairs went from 50.1 % of campus spending in FY 2006-07 to 52.4 % in FY 2009-10. The BRC expressed appreciation for the university’s decision to make proportionally larger reductions in non-academic divisions.
- 2) The rapidly changing budget environment both in New York State and within SUNY made it difficult for BU to absorb reductions, some of which were announced well after internal budget allocations had been made. The BRC received and discussed several reports and updates from Vice-President Jim Van Voorst on the size of these reductions for BU and its response to them. This included creating a “structural deficit” which reached approximately \$12 million in May 2011. This “structural deficit” derives from not distributing all of the reductions in state support during three financial years (2009-10, 2010-11, 2011-12). Plans to eliminate this “structural deficit” in the coming years have been developed by the senior administration at BU and will be discussed by the BRC in 2011-12. In other words, rather than distribute across the campus (read: immediately absorb) all of the reductions when they were made, in essence BU has amortized some of the reductions over a number of years.
- 3) Setting spending priorities in such circumstances is obviously a challenging task. Nonetheless, BU remains committed to its most recent budget development process, one in which spending is planned one full financial year in advance. Therefore, during the spring semester 2011, the BRC received and discussed reports from the chair of the Strategic Planning Committee, Vice-Provost Michael McGoff, on spending requests and their accompanying rationales generated by all sectors of BU for FY 2012-13. These reports elucidated many possible spending options as well as critical areas of need. Although final choices have the appearance of discretionary spending, BU must use this process also to address certain forms of mandatory spending. For example, replacing the current DARS monitoring software because it will soon no longer be supported by its parent company.

In addition to these three major issues, the BRC received updates on the evolving politics of adopting a “rational tuition” policy for SUNY and on what is now dubbed NYSUNY 2020. The final features of both of these issues were not resolved until weeks after the close of FY 2010-11

and so will be the subject of the BRC report for 2011-12.

Finally, after an open discussion between the executive administration of BU and Faculty Senate leaders, including myself as chair of the BRC, President McGrath decided to modify the role of the Faculty Senate in the budget process in three ways:

- 1) The Strategic Planning Committee will henceforth include an ex-officio member appointed by the Faculty Senate Executive Committee;
- 2) the BRC will henceforth provide input “*later* in the process” of developing “discretionary” spending priorities;
- 3) late in the spring semester, one of the President’s standing meetings with the Faculty Senate’s Campus Governance Leaders (i.e. Chair of the Faculty Senate; Chair of the FSEC, BU’s two elected senators on the SUNY Faculty Senate) will be expanded to include the Vice-President for Administration, the Vice-Provost for Strategic and Fiscal Planning, and the Chair of the BRC. These changes will be incorporated into the flow diagram for the expenditure analyses and allocation process, notably by making the arrow between the BRC and the SPC bi-directional. See the attached diagram.

Howard G. Brown
Chairman,
Faculty Senate Budget Review Committee

Faculty members: Serdar Atav, James Carpenter, Robert Emerson, Peter Knuepfer, Dennis Lasser, Jonathan Krasno, Sean Massey, Edward Shephard, Gary Truce.

Administration members: Michael McGoff, Peter Mileur, James Van Voorst

Student members: Adam Shamah

DRAFT

BINGHAMTON UNIVERSITY
ALL FUNDS SUMMARY
FISCAL YEAR 2009-2010

Not for External Release

Prepared by Assoc. VP for Administrative Affairs

December 14, 2010

Summary of Fiscal Controls

The University receives funding from multiple sources. Each funding source has its own set of accounting and fiscal controls. Following is a brief description of the primary aspects of each funding source. The fiscal year for each funding source is the same, July 1 through June 30.

State Purpose Funds:

These funds are appropriated annually by the State Legislature through the State budgetary process. All activity is monitored by the State Comptroller's Office. For the purpose of this presentation State Purpose funds include general State Operating, SUTRA, Stabilization, Special Programming and College Work Study appropriations.

Income Fund Reimbursable:

This mechanism allows operations to administer certain funds that collect revenue in support of those functions. Examples include photocopy services, research grant cost recovery, food services, parking and book fines. Like State-Purpose funds, IFR funds are appropriated annually by the State Legislature and all activity is monitored by the State Comptroller's Office. Activities are funded by the operations through funds raised by the activity.

Dormitory Income Fund:

This mechanism is used to operate the campus residence halls. Revenues are collected from the student room rates used to meet costs associated with residence hall related operations and activities.

Research Foundation:

The Research Foundation of the State University of New York serves as the conduit for all grants and contracts awarded to SUNY institutions. The Research Foundation provides basic administrative support to the campuses. The University is responsible for ensuring that expenditures are made in accordance with Research Foundation, sponsor, and campus guidelines and that sponsor billings are timely and accurate.

Binghamton University Foundation:

The Binghamton University Foundation is a not-for-profit corporation created and operated to receive and administer gifts and donations for the campus. Monies are held as restricted or unrestricted in a fund account and are made available to departments in accordance with gift or donation specifications. The Alumni Association is a separate entity but works closely with the Binghamton University Foundation.

The Foundation also provides bookkeeping services for specific operations through agency accounts as allowed by SUNY policies. Agency accounts are established and monitored based on University Controller and Binghamton University Foundation guidelines

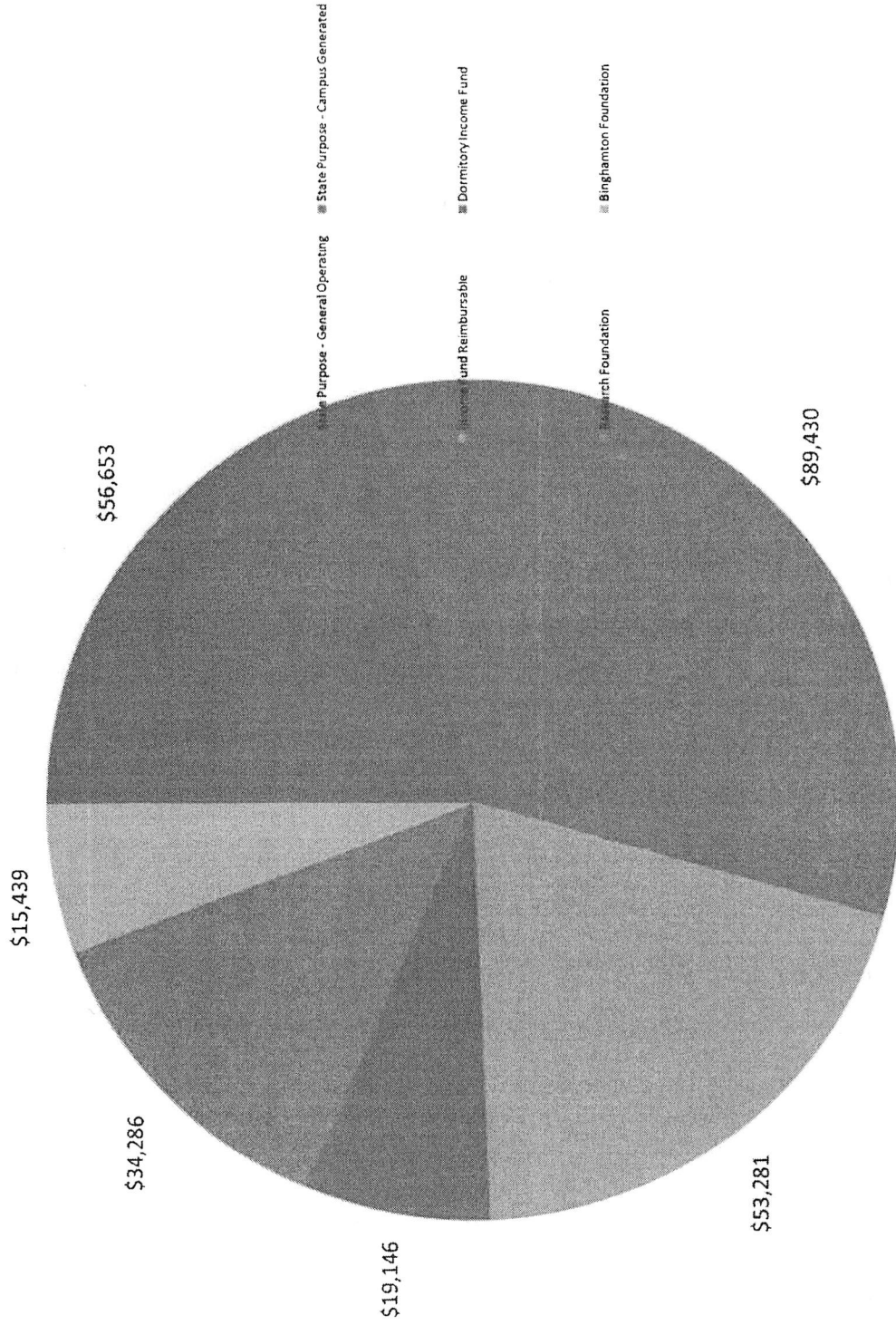
December 14, 2010

**COMPARISON OF
EXPENDITURES: ALL FUNDS**

FISCAL YEARS 2005 THROUGH 2010

FUND	2005-06		2006-07		2007-08		2008-09		2009-10		CHANGE
	FISCAL YEAR	%	FISCAL YEAR	%	FISCAL YEAR	%	FISCAL YEAR	%	FISCAL YEAR	%	FY05-FY09
STATE PURPOSE:											
GENERAL OPERATING	\$ 52,684.3	24%	\$ 61,473.6	26%	\$ 67,158.5	26%	\$69,771.7	26%	\$56,652.8	21%	
CAMPUS GENERATED	70,707.8	32%	74,765.4	31%	80,027.2	32%	81,246.3	30%	89,430.0	33%	
TOTAL	123,392.1	56%	136,239.0	57%	147,185.7	58%	151,018.0	56%	146,082.8	54%	18%
INCOME FUND REIMBURSABLE	44,794.2	20%	47,596.8	20%	48,848.3	19%	52,266.1	20%	53,281.4	20%	19%
DORMITORY INCOME FUND	17,663.5	8%	18,091.0	8%	18,047.7	7%	19,571.5	7%	19,146.4	7%	8%
RESEARCH FOUNDATION:											
PROGRAM-DIRECT	21,650.5		24,191.2		24,760.7		27,404.6		29,513.4		
PROGRAM-INDIRECT	3,456.2		3,032.7		3,343.4		4,543.1		4,772.2		
TOTAL	25,106.7	11%	27,223.9	11%	28,104.1	11%	31,947.7	12%	34,285.6	13%	37%
BINGHAMTON FOUNDATION											
UNRESTRICTED	2,941.6		2,971.5		3,072.7		2,867.4		3,055.3		
RESTRICTED	1,314.7		1,890.6		1,925.1		2,284.2		1,862.6		
ENDOWMENT EXPENDABLE	852.1		1,040.0		819.7		855.9		1,208.6		
SCHOLARSHIPS & AWARDS	n/a		n/a		1,114.1		1,256.6		1,619.2		
AGENCY	3,786.0		2,918.9		4,549.4		4,960.7		7,693.2		
TOTAL	8,894.4	4%	8,821.0	4%	11,481.0	5%	12,224.8	5%	15,438.9	6%	74%
UNIVERSITY TOTAL	\$ 219,850.9	100%	\$ 237,971.7	100%	\$ 253,666.8	100%	\$ 267,028.1	100%	\$ 268,235.1	100%	22%

BINGHAMTON UNIVERSITY
 OPERATING EXPENDITURES FOR ALL FUND SOURCES
 FY 2009-20



SUMMARY OF OPERATING EXPENDITURES: ALL FUNDS

12/10/10

FISCAL YEAR 2009-10

(In Thousands)

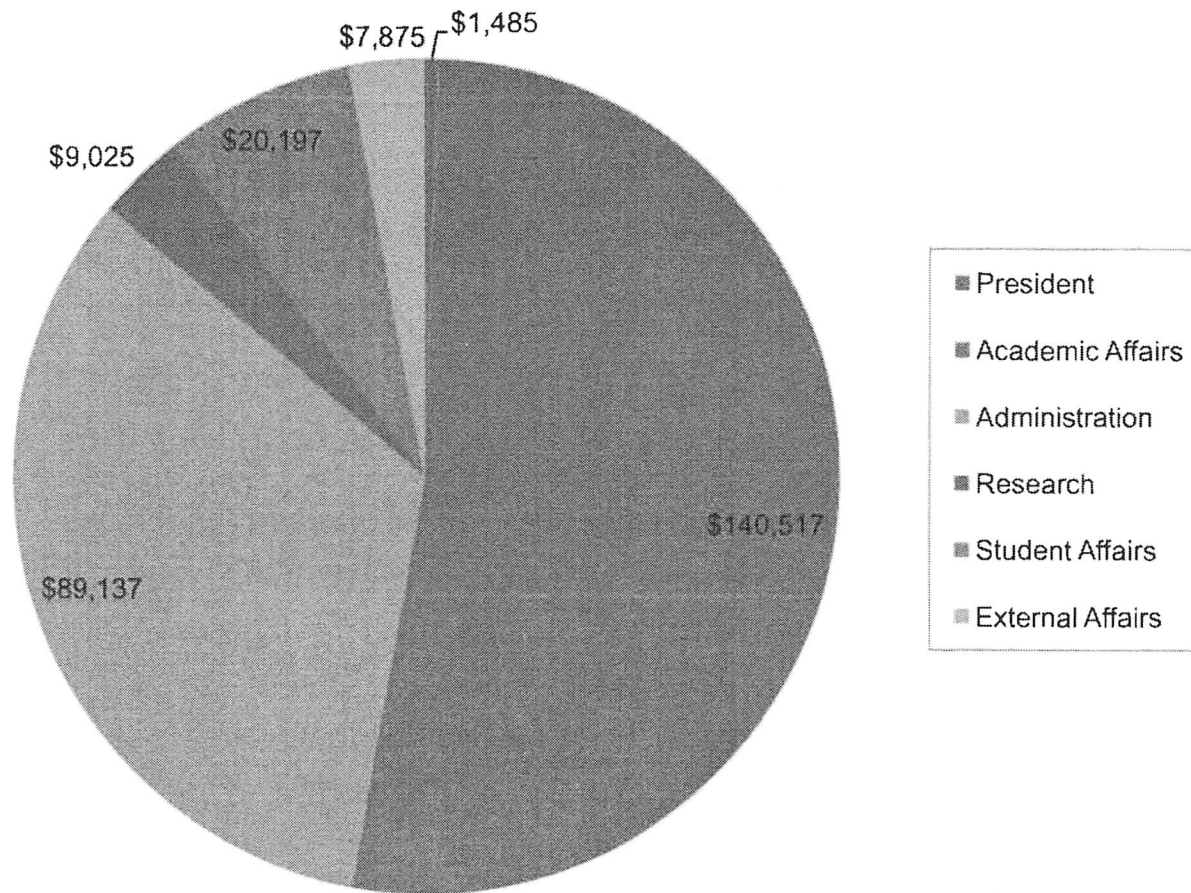
FUND	FUNCTIONAL UNIT						
	TOTAL	PRESIDENT	ACADEMIC AFFAIRS	ADMIN	RESEARCH	STUDENT AFFAIRS	EXTERNAL AFFAIRS
STATE PURPOSE	\$ 146,082.8	\$ 1,028.4	\$ 101,963.0	\$ 32,422.0	\$ 2,408.6	\$ 4,645.4	\$ 3,615.4
INCOME FUND REIMBURSABLE	53,281.4	407.6	5,331.5	36,694.6	1,971.9	8,773.6	102.2
DORMITORY INCOME FUND	19,146.4	-	74.8	13,950.7	-	5,120.9	-
RESEARCH FOUNDATION:							
PROGRAM-DIRECT	29,513.4	-	27,598.4	-	977.4	937.6	-
PROGRAM-INDIRECT	4,772.2	-	1,158.0	-	3,605.1	2.6	6.5
TOTAL	34,285.6	-	28,756.4	-	4,582.5	940.2	6.5
BINGHAMTON FOUNDATION:							
UNRESTRICTED	3,055.3	-	-	-	-	-	3,055.3
RESTRICTED	1,862.6	0.5	1,176.8	460.1	1.2	113.4	110.6
ENDOWMENT REVENUE	1,208.6	-	1,104.6	6.6	4.7	7.0	85.7
SCHOLARSHIPS & AWARDS	1,619.2	-	762.9	24.8	-	3.1	828.4
AGENCY	7,693.2	48.5	1,346.5	5,578.5	55.7	592.9	71.1
TOTAL	15,438.9	49.0	4,390.8	6,070.0	61.6	716.4	4,151.1
UNIVERSITY TOTAL	\$ 268,235.1	\$ 1,485.0	\$ 140,516.5	\$ 89,137.3	\$ 9,024.6	\$ 20,196.5	\$ 7,875.2

Notes:

- 1) Amounts are based on campus-based accounting systems and do not reflect all IPEDS adjustments
- 2) Expenditures are classified according to the policies of each respective fund
- 3) Amounts are presented on the cash basis
- 4) SUNY State Debt Service, Fringe Benefits and centrally applied overheads are not reflected in totals
- 5) During FY0910 \$7.4 million of indirect cost (F & A) was recovered from sponsored funds and contracts

- 6.) State Purpose funds include Core Budget, SUTRA and Federal Work Study Funds and Temporary Allocations, Special Program Allocations & State Stabilization Funds
- 7.) Indirect Expense for Research includes central office assessment of \$1019.8

BINGHAMTON UNIVERSITY
OPERATING EXPENDITURES ALL FUNDS BY DIVISION
FY 2009-2010



BINGHAMTON UNIVERSITY

NOT FOR EXTERNAL RELEASE

CHART 3

SUMMARY OF ACADEMIC AFFAIRS EXPENDITURES: ALL FUNDS

12/10/10

FISCAL YEAR 2009-10

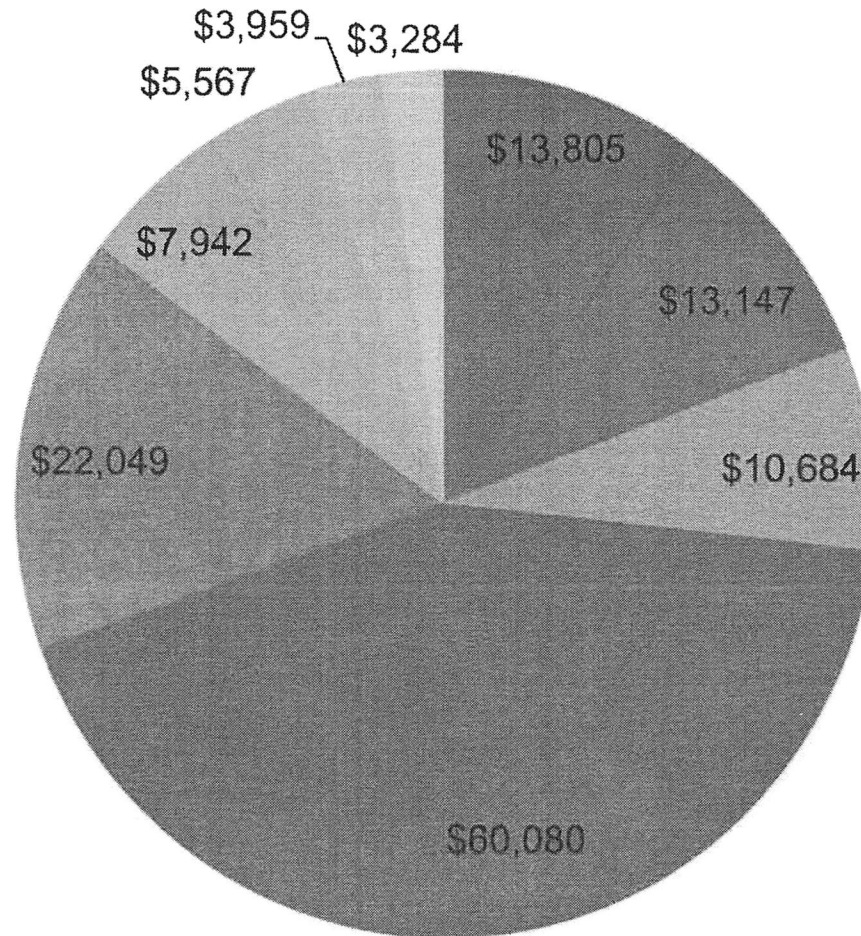
(In Thousands)

FUND	FUNCTIONAL UNIT									
	TOTAL	GENERAL	GRAD. SCHOOL	LIBRARY	SCHOOLS: HARPUR	WATSON	SOM	SON	SOE	CCPA
STATE PURPOSE	\$ 101,963.0	\$ 11,389.6	\$ 10,557.2	\$ 10,026.5	\$ 43,432.6	\$ 10,090.9	\$ 7,023.4	\$ 4,412.9	\$ 2,093.2	\$2,936.7
INCOME FUND REIMBURSABLE	5,331.5	816.3	1,946.5	524.3	1,310.2	455.7	0.5	206.4	40.0	31.6
DORMITORY INCOME FUND	74.8	74.8	-	-	-	-	-	-	-	-
RESEARCH FOUNDATION:										
PROGRAM-DIRECT	27,598.4	239.8	380.8	44.8	13,824.4	10,734.2	165.2	551.8	1,499.0	158.4
ADMINISTRATIVE-CAMPUS	1,158.0	18.2	-	-	548.6	521.7	4.1	0.4	47.7	17.3
TOTAL	28,756.4	258.0	380.8	44.8	14,373.0	11,255.9	169.3	552.2	1,546.7	175.7
BINGHAMTON FOUNDATION:										
UNRESTRICTED	-	-	-	-	-	-	-	-	-	-
RESTRICTED	1,176.8	139.7	237.8	46.1	224.7	116.4	201.2	66.1	35.6	109.2
ENDOWMENT REVENUE	1,104.6	92.4	13.0	10.6	250.2	12.3	455.3	221.4	49.4	0
SCHOLARSHIPS & AWARDS	762.8	1.6	11.2	-	426.7	106.4	66.9	104.4	32.2	13.4
AGENCY	1,346.6	1,032.9	-	31.2	62.5	10.9	25.4	3.9	162.3	17.5
TOTAL	4,390.8	1,266.6	262.0	87.9	964.1	246.0	748.8	395.8	279.5	140.1
ACADEMIC AFFAIRS TOTAL	\$ 140,516.5	\$ 13,805.3	\$ 13,146.5	\$ 10,683.5	\$ 60,079.9	\$ 22,048.5	\$ 7,942.0	\$ 5,567.3	\$ 3,959.4	\$ 3,284.1

Notes:

- 1) Amounts are based on campus-based accounting systems and do not reflect all IPEDS adjustments
- 2) Expenditures are classified according to the policies of each respective fund
- 3) Amounts are presented on the cash basis
- 4) SUNY State Debt Service, Fringe Benefits, and centrally applied overheads are not reflected in totals
- 5) State Purpose funds include Core Budget, SUTRA and Federal Work Study Funds, Special Program Allocations and State Stabilization Funds & Temp Allocations
- 6) The General heading includes the Provost Office operation as well as Registrar, Enrollment Management, Institutional Research, University Art Museum, Anderson Performing Arts Center, Physical Education and Continuing Education/Summer Program

BINGHAMTON UNIVERSITY
ACADEMIC AFFAIRS OPERATING EXPENDITURES ALL FUNDS
FY2009-2010



- General
- Grad School
- Library
- Harpur
- Watson
- SOM
- Decker
- SOE
- CCPA

BINGHAMTON UNIVERSITY

NOT FOR EXTERNAL RELEASE

CHART 4

SUMMARY OF ADMINISTRATION EXPENDITURES: ALL FUNDS

12/10/2010

FISCAL YEAR 2009-10

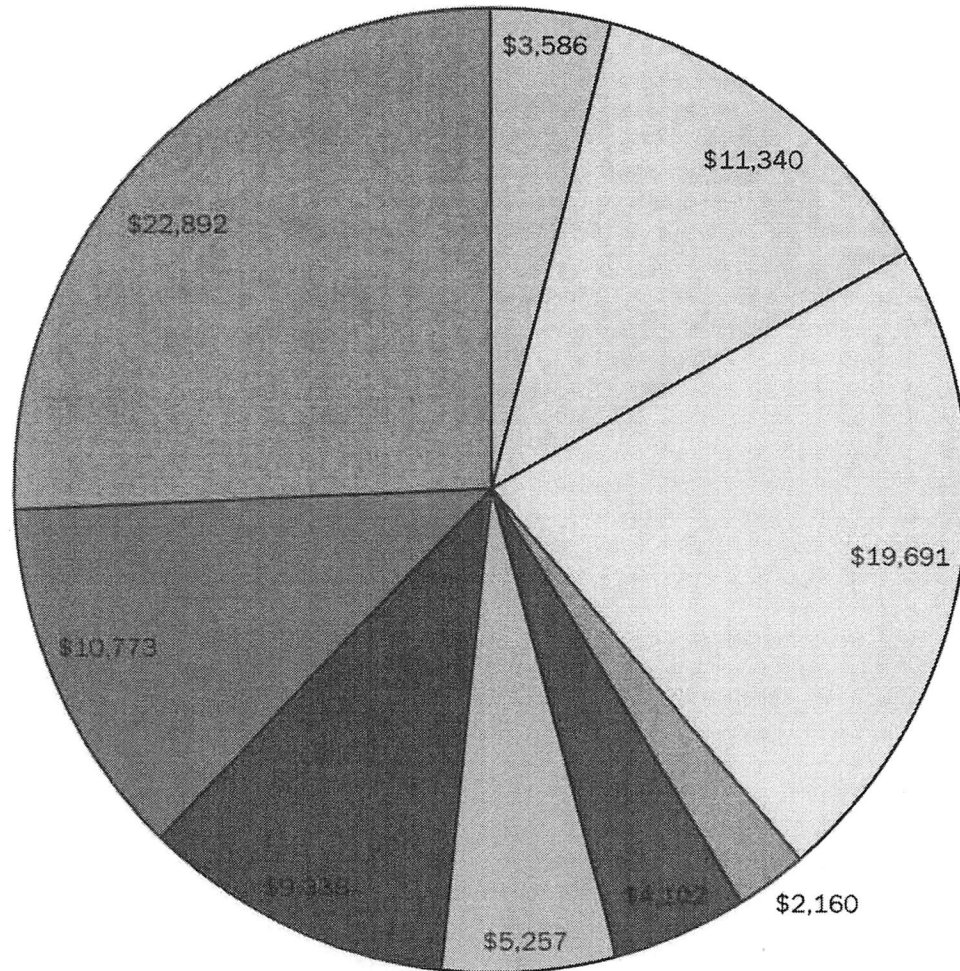
(In Thousands)

FUND	FUNCTIONAL UNIT									
	TOTAL	VICE PRESIDENT	ITS	PHYSICAL FACILITIES	BUSINESS OPERATIONS	POLICE	ASSOC VP ADM SVCS	FOOD SERVICE	UTILITIES	INTERCOLL ATHLETICS
STATE PURPOSE	\$32,422.0	\$ 1,429.9	\$ 4,326.1	\$ 11,431.7	\$ 1,485.7	\$ 1,245.2	\$2,807.30		\$ 6,556.3	\$ 3,139.8
INCOME FUND REIMBURSABLE	36,694.6	(74.9)	5,798.9	714.1	428.3	1,270.2	1,928.30	19,590.1	-	7,039.6
DORMITORY INCOME FUND	13,950.7	65.0	1,214.3	7,537.3	246.1	1,586.1	521.8		2,780.1	-
RESEARCH FOUNDATION:										
PROGRAM-DIRECT	-	-	-	-	-	-	-	-	-	-
ADMINISTRATIVE-CAMPUS	-	-	-	-	-	-	-	-	-	-
TOTAL	-	-	-	-	-	-	-	-	-	-
BINGHAMTON FOUNDATION:										
UNRESTRICTED	-	-	-	-	-	-	-	-	-	-
RESTRICTED	460.1	1.0	1.0	7.7	-	-	-	-	-	450.4
ENDOWMENT REVENUE	6.6	6.6	-	-	-	-	-	-	-	-
SCHOLARSHIPS & AWARDS	24.8	(4.7)	-	-	-	-	-	-	-	29.5
AGENCY	5,578.5	2,162.7	-	-	-	-	-	3,301.8	-	114.0
TOTAL	6,070.0	2,165.6	1.0	7.7	-	-	-	3,301.8	-	593.9
UNIVERSITY TOTAL	\$ 89,137.3	\$ 3,585.6	\$ 11,340.3	\$ 19,690.8	\$ 2,160.1	\$ 4,101.5	\$ 5,257.4	\$ 22,891.9	\$ 9,336.4	\$ 10,773.3

Notes:

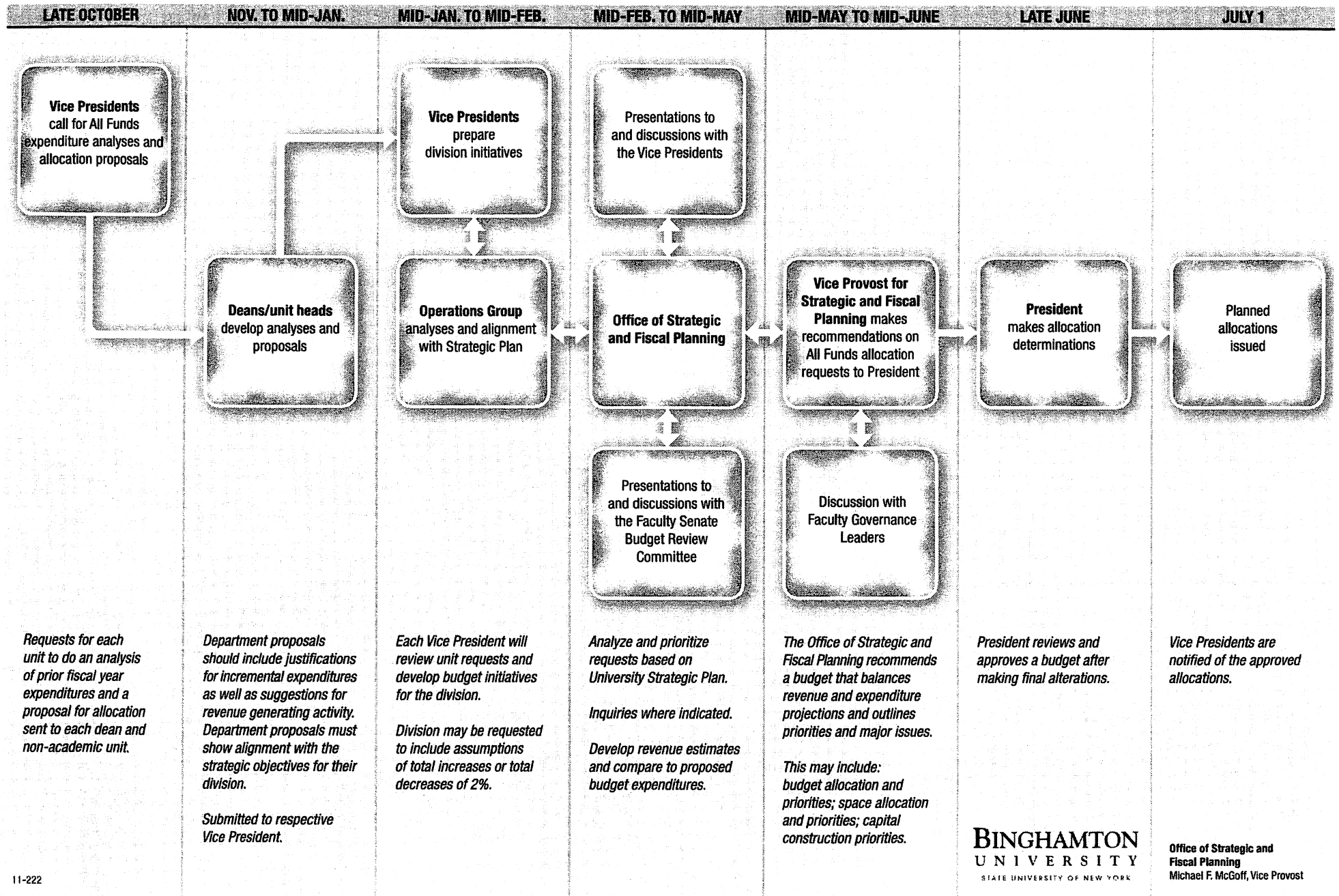
- 1) Amounts are based on campus-based accounting systems and do not reflect all IPEDS adjustments
- 2) Expenditures are classified according to the policies of each respective fund
- 3) Amounts are presented on the cash basis
- 4) SUNY State Debt Service, Fringe Benefits and centrally applied overheads are not reflected in totals
- 5) State Purpose funds include Core Budget, SUTRA and Federal Work Study Funds, and Temporary Allocations
- 6) The Vice President column includes the Vice President Office, Internal Audit, Affirmative Action, University Counsel, and Budget

BINGHAMTON UNIVERSITY
ADMINISTRATION OPERATING EXPENDITURES ALL FUNDS
FY2009-2010



- Vice Pres
- Comp Center
- Phys Facilities
- Bus Operations
- University Police
- Assoc VP Adm Services
- Utilities
- Intercoll Athletics
- Food Service

Expenditure Analyses and Allocation Process



Faculty Senate Bylaws Review Committee **Annual Report 2010-2011**

During the course of academic year 2010/11, a number of issues were brought before the Bylaws Review Committee of Binghamton University, namely:

- Streamlining the nomination process of the Faculty Senate Executive Committee
- Implications of making the Steward of the Nature Preserve a full voting member of the Committee for the University Environment
- Amending the Bylaws Appendix so as to include provisions regarding the Faculty Senate Evaluation Coordinating Committee
- Proposal to revise the Bylaws Appendix charge of Professional Standards Committee
- Proposal to revise the Intercollegiate Athletics Committee charge
- Implications of a proposal to revise guidelines for approval of academic programs and departments through Faculty Senate

In what follows, I address each in sequence.

Streamlining the FSEC Nomination Process

Here, the underlying issue was the difficulty of finding nominees to run for membership in the Faculty Senate Executive Committee (FSEC) and the frequent need to recruit actively for same. The starting point for discussions of the committee was a proposal from the FSEC to simplify the process, which at the time under Bylaws Art. III Title B. 6. (a) involved each constituency's nominating "candidates from the constituency to a number at least twice as many as the constituency's membership on the Executive Committee. Nominating petitions must be signed by 10 percent of the constituency, or 15 constituents, whichever number is smaller." The FSEC's suggestion was to take the nominating process for the Presidential Search Committee as a model.

After much discussion and some research into best practices, the following amendment (changes in **bold**) was forwarded to the FSEC: "Each constituency shall nominate candidates from the constituency to a number at least twice as many as the constituency's membership on the Executive Committee. **Nominating petitions must be signed by a minimum of 5 constituents.**"

Making the Steward of the Nature Preserve a Full Voting Member of the Committee for the University Environment's (CUE)

Discussion here was prompted by CUE's resolution to recommend making the Steward of the Nature Preserve a full voting member of CUE, a change necessarily involving a change to the Bylaws Appendix, which at the time made no mention of the Steward.

Issues considered by the Committee included whether the position of Steward should be considered permanent (it is so considered by CUE, which notes plans to have it funded by bequest) and the importance of keeping Administration in the loop on the change, which would require approval only by FSEC and Senate (but Administration will have taken part in CUE's resolution).

In the end, Committee members were able to reach on consensus that just such an amendment to the CUE charge be formulated and forwarded to the FSEC, and that where it the amended charge diverges clearly and in substantial ways from the earlier charge, composition, etc., said divergences be pointed out to the Senate.

Proposal for an Evaluation Coordinating Committee (ECC) addendum to the Bylaws Appendix.

Previously, the charge, composition, etc. of the ECC, a standing committee of the Faculty Senate, were absent from Faculty Bylaws Appendix. To change that, the FSEC and the ECC proposed an amendment writing the ECC into the Bylaws Appendix, but also changing the selection process, shifting it from a secret balloting process in which the entire Faculty Senate votes, to one where the Committee on Committees chooses, and the Faculty Senate confirms, the ECC. After discussion, the Committee agreed that, after minor changes, the amendment was ready to go to the Faculty Senate.

Proposal to revise the Bylaws Appendix charge of Professional Standards Committee (PSC).

The Committee considered a proposal on the part of the FSEC to add language to the Bylaws Appendix PSC charge to limit the involvement of the PSC in ongoing personnel cases. (While the PSC's charge had previously mandated no such role for the PSC, this last had, on certain occasions, taken on such a role.) The principle invoked was that the Faculty Senate and its committees (e.g., the PSC) are not to play a role in personnel procedures, except in cases relating specifically to the professional conduct of faculty members involved in a given case. The Bylaws committee, noting that the changes carried benefits and no obvious liabilities, recommended that the proposal be forwarded to the Faculty Senate.

Proposal to revise the Intercollegiate Athletics Committee (IAC) charge.

In response to the Kaye Report's recommendations, as well as those of Roger Westgate's Preliminary report, the IAC proposed revisions and additions to the text of its Bylaws Appendix charge, that with a view to clarifying its oversight role with regard to student athletics at BU. During discussions, the proposed changes found favor with the Committee, which recommended they go to the Faculty Senate.

Bylaws implications of a proposal to revise guidelines for approval of academic programs and departments through the Faculty Senate.

Inasmuch as this last issue was still at a preliminary stage with the FSEC, the Committee was merely asked to provide suggestions on how to proceed, not to formulate a Bylaws amendment, or to discuss any suggested amendment forwarded to the Committee.

What emerged in the course of discussion was that:

- The guidelines provide a pretty good picture of how the process works for graduate but not for undergraduate programs
- They need to be kept in line with procedures used by SUNY Central in Albany
- The FSEC is split on Bylaws-specific issues, namely,
 - Whether these guidelines should remain as part of the charge of the EPPC in the Bylaws Appendix, which is where they are now
 - Whether they should be removed from the Appendix and relocated to
 - A separate document, linked-to by way of the EPPC appendix – a way, committee members noted, to make the EPPC charge consistent with the relative simplicity of other charges in the Bylaws Appendix — or else to some sort of addendum within the Bylaws Appendix
 - The Bylaws proper, inasmuch as they chart procedure on a par with, e.g., personnel actions in terms of importance to the University

Respectfully submitted,

Andrew Scholtz, Committee Chair

Committee members

Terry Deak (President/Provost ex-officio appointee)

William Heller (Harpur social sciences, Political Science),

Luiza Moreira (Harpur humanities, Comparative Literature)

Sara Reiter (SOM)

Andrew Scholtz (Harpur humanities, CNES, committee Chair)

Douglas Summerville (Watson)

Kelly Wemette (President/Provost ex-officio appointee)

Faculty Senate Convocations Committee
Annual Report 2010-2011

The committee used its charge as the major guide for funding decisions: “bringing programs to campus that enhance and support the intellectual, cultural, and artistic aspects of the academic curriculum, and to focus our efforts toward as diverse a university community as possible”. The committee traditionally has not funded events that did not fit the criteria above or requests for food, receptions, or parties. Publicity, speakers’ fees, or transportation are items that were specifically funded. In addition, events that cater to a variety of groups on campus in general, and undergraduate students in particular, were looked upon favorably by the committee.

The funding came from the Presidents’ Office (\$5,375) and the Student Association (\$5,375) for a total of \$10,750. Our available funds for the year, including the carryover from 2008-2009 (\$17,143) and new allocations, totaled \$27,893. Allocations this year totaled \$14,510 (excluding agency fee) leaving a remaining balance of \$13,383 forward into the 2011-2012 academic year.

The convocations committee is comprised of 3 faculty members, 3 administrative members (President’s office, Campus Life, and Provost’s office designees), 3 Student Association representatives, and a Graduate Student Organization representative. The GSO never assigned a representative this term. Each new funding request is discussed during committee meetings. Final decisions are made through voting by the committee members. In a great majority of cases, decisions are unanimous. Student members' contributions are invaluable during discussions. As SA representatives, they are closely familiar with most events that request funding and provide unique perspective and insight that contribute to funding decisions.

The Convocations Committee applications to support 24 separate events. Of those 24 applications, 19 were funded. Allocations ranged from a minimum of \$200 to maximum of \$2,500. The committee denied four applications, because the committee unanimously felt that these particular activities did not meet the committee’s criteria for funding. One application was submitted late in May for reconsideration in Fall 2011.

Due to the abundance of funds, convocations committee advertised its function through various student association committees and meetings, resulting in an inflow of applications particularly in the Spring 2011 semester. We plan to continue our publicity efforts through the 2011-2012 academic year through the Student Association. If necessary, the committee feels Pipe Dream, BU Inside, Dateline may also be used for advertising.

The committee still remains pretty much in the dark in terms of the status of funds after allocations are made. We hope that recent changes in the administration of the account will bring more transparency to the process.

Respectfully submitted,

Serdar Atav, Committee Chair

Committee members

Laura Anderson	Ed Mays (SA)
Serdar Atav	D. Rabinowitz (SA)
Brian Crawford	Kent Shanise
Jena Goldin (SA)	Cheryl Spiese
Jennifer Keegan	

A detailed documentation of funding sources and allocations is presented below.

Convocations Committee Funding and Allocations

Fall 2010 – Spring 2011

	BALANCE FORWARD		\$17,143
	New Allocations		
SU	President's Office	\$5,375	
President's office	SA	\$5,375	
	TOTAL FUNDS AVAILABLE F10 - S11		\$27,893
October			
	CCPA Arun Gandhi	\$500	\$27,393
	Campus Climate Challenge - GASLAND	\$500	\$26,893
	Global Renaissance Inc - See Like Us, Be Like Us	\$0	\$26,893
December			\$26,893
	Carribbean Student Association - One Love	\$2,000	\$24,893
	Suny Vines - Dave cooper	\$200	\$24,693
	Charles Drew Minority - Albany Medical Trip	\$0	\$24,693
	Hillel - Dr. Ruth	\$1,000	\$23,693
February			\$23,693
	African Student Association - Threads of the Motherland	\$750	\$22,943
	LACAS - Reflections on the Origin of Species	\$250	\$22,693
	LACAS - Torture, Survival, and Resistance	\$400	\$22,293
	MRC - Earl Carter Book Discussion	\$460	\$21,833
	MRC - Festival of Lights	\$750	\$21,083
	BU Writing Initiative - Building 21st Century Writing Programs	\$500	\$20,583
	Art History Grad. Stu. Union - Crossing the Boundaries	\$700	\$19,883
	Chabad - PURIM Festival	\$1,500	\$18,383
	BU Gospel Choir -	\$0	\$18,383
	Rainbow Pride Union - Northeast LGBT Conference	\$2,500	\$15,883
March	BSU Afro Latin Week	\$500	\$15,383
	Hillel - Yom Ha'zamaut	\$500	\$14,883
	EMO/SAC Shaleschock	\$250	\$14,633
	CPIC we are not dogs	\$250	\$14,383
	Chabad - Shabbat	\$1,000	\$13,383
	LEAP - College Libertarians	\$0	\$13,383
	TOTAL ALLOCATIONS	\$14,510	
	BALANCE FORWARD		\$13,383

Faculty Senate Educational Policies and Priorities Committee
Annual Report 2010-2011

The committee met on November 12, 2010 to discuss amendments to the Academic Honesty Policy proposed by the Dean of the Graduate School. The changes were to address plagiarism in graduate theses and dissertations. There was concern more oversight was necessary to address cases of plagiarism than the current policies in the Student Handbook.

Questions from the Faculty Senate Executive Committee regarding these procedural changes were addressed by Dean Stamp, and the committee discussed various concerns about plagiarism on campus. These included consideration of the impact of digital access to information on plagiarism, creation of uniform academic honesty policies for schools and programs, and the need to convene a group to address procedural matters regarding plagiarism, including informal resolution of issues. The committee recommended that the Faculty Senate Executive Committee convene an Academic Honesty Task Force to explore these issues in more detail and provide recommendations of updated and new policies as appropriate.

The committee was provided an update of clarifications added to the International Certificate Program to a Global Studies Minor distributed to the EPPC in 2010. This updated document clarified the leadership plan for the program.

The committee was also notified of the combined BA/MA in Asian & Asian American Studies, per the notification process established on campus for new graduate programs.

Respectfully submitted,

Elizabeth Brown, Committee Chair

Committee members

Chair: Elizabeth Brown, Libraries
Stephen Zahorian, Electrical & Computer Engineering
Douglas Holmes, Anthropology
Herbert Bix, History
Laura Anderson, Mathematical Sciences
George Catalano, Bioengineering
Daniel Rabinowitz, undergraduate student
Cory Jankow, undergraduate student
Peter Mileur, president's ex officio appointee
Nancy Stamp, provost's ex officio appointee
Donald Loewen, German and Russian*

FACULTY SENATE EDUCATIONAL OPPORTUNITY PROGRAM COMMITTEE
Annual Report 2010-2011

The Faculty Senate Educational Opportunity Program Committee meets four times during the academic year, twice during the Fall semester and twice during the Spring semester. Professor Leo Wilton, an associate professor in the Department of Human Development in the College of Community and Public Affairs, chaired the Committee during the 2010-2011 academic year. Professor Wilton is a Binghamton alumnus and Binghamton Educational Opportunity Program and Binghamton Enrichment Program (BEP) alumnus. Approximately 14 members actively participated on the Committee during the 2010-2011 academic year.

The charge of the EOP Committee is as follows: (1) advise and assist the EOP Director with respect to establishing policies, procedures and academic guidelines for the selection of EOP students, developing educational programs for EOP students, promoting developmental course work and tutorial services for EOP students, and maintaining liaisons between EOP and BU faculty, students, administration, schools, and departments; (2) provide advisement to BU administration on matters related to EOP; (3) provide recommendations to the Faculty Senate regarding matters related to EOP; and (4) develop an annual report on the status of EOP.

The Binghamton University Educational Opportunity Program, under the leadership of EOP director Randall Edouard, has provided strong program leadership in maintaining exceptional standards for academic excellence for students and strengthening core components of the program. The retention and graduation rates continue to be competitive on statewide and national levels (e.g., Binghamton University represents the strongest program in terms of retention in SUNY).

One of the major accomplishments for EOP during the 2010-2011 academic year in collaboration with Provost Mileur's leadership related to the approval of the implementation of a tuition waiver for BEP students to receive eight (8) academic credits (two 4-credit courses) during the summer session. The Department of Geography in Harpur College and the Department of Human Development in the College of Community and Public Affairs (CCPA) will sponsor the summer courses for the BEP students. Both courses incorporate considerable critical analytic thinking, writing, and general education (GEN ED) requirements to enhance the learning experiences for students. Students have opportunities to consider how theory relates to research and praxis in the study of geography and human development and to explore global-local contexts in relation to cross-cultural research and how this learning relates to larger societal contexts.

Several of the academic components of the Binghamton Enrichment Program (EOP), EOP's four-week summer program for incoming EOP students, were strengthened considerably (e.g., academic programming, academic schedule, implementation of mandatory study hours, etc). Significantly, the EOP director facilitated an academic session each day for the students in the evening. In addition, EOP in conjunction with the Harpur Dean's office worked to implement a new W (Writing emphasis) course for EOP students during the academic year.

Most notably, based on previous efforts, EOP worked assiduously in providing leadership in securing book stipends for students. This represented exemplary yet challenging efforts that were accomplished during the 2010-2011 academic year. In addition, the Committee will need to work in partnership with the University to develop strategies for continuing to raise funds for book stipends for EOP students since this has been an ongoing challenge for EOP.

Another ongoing challenge for EOP has been the budget cuts, particularly which has had an impact on the enrollment of new students into the program. During the 2010-2011 academic year, EOP developed a proposal to SUNY for an increase in the number of newly admitted EOP students at Binghamton University. More discussion and emphasis will need to be placed regarding this issue. Binghamton University will need to consider strategies to promote the continued support for the Educational Opportunity Program to maintain the high academic standards and performance for which EOP is widely recognized.

Respectfully submitted,

Leo Wilton, Ph.D., Committee Chair

Committee members

Leo Wilton, Committee Chair, Faculty Member, CCPA, Department of Human Development

Marilyn Gaddis Rose, Faculty Member, Harpur College

Nancy Um, Faculty Member, Harpur College

Masha Britten, Faculty Member, Decker School of Nursing

Dina Maramba, Faculty Member, CCPA, Department of Student Affairs

Randall Edouard, Director, EOP

John Frazier, Faculty Member, Harpur College

Jennifer Jensen, Associate Dean, Harpur College

Valerie Hampton, Director, Affirmative Action

Dennis Chavez, Director, Financial Aid Services

Shalah Ahmed, EOP Undergraduate Student Representative

Anne Jean-Paul, EOP Undergraduate Student Representative

Edmund Mays, Student Association Representative

Denise Yull, Graduate Student Representative

Faculty Senate Intercollegiate Athletics Committee
Annual Report 2010-2011

The Intercollegiate Athletics Committee (IAC) met eight times during the 2010-11 Academic year, and primarily considered three initiatives:

- (1) Updating the committee's charge
- (2) Evaluating the minimum GPA required for student-athletes to remain eligible for competition
- (3) Considering the Missed Class policy, especially as it relates to student-athletes.
- (4) Improving the flow of information and dialog between Athletics, Admissions, and the IAC

Summary results appear below.

Committee Charge

The IAC's new charge, as voted by the full Faculty Senate in the May 17, 2011 meeting, is as follows:

to oversee and recommend procedures by which the university and the Department of Athletics maintain university, conference, and NCAA standards for the academic pursuits of student-athletes. This includes

- 1. evaluating and recommending procedures by which the Department of Athletics promotes the academic success of student-athletes, maintains university academic standards, and ensures compliance with NCAA academic requirements;*
- 2. evaluating and recommending policies and procedures within other university departments and offices, including Admissions, that affect student-athletes and university academic standards;*
- 3. developing guidelines for the integration of student-athletes into university academic life, and promoting initiatives that integrate Department of Athletics academic support programs with other campus resources, offices and programs;*
- 4. making recommendations to the Faculty Senate regarding these and other academic issues that impact student-athletes and the Department of Athletics.*

A 4 page motion presented to the Faculty Senate on May 10, 2011, along with an amended motion from May 17, 2011, describe the rationale behind the change in the charge.

Minimum GPA

The IAC considered at length the issue of whether Binghamton should change the minimum GPA required for student athletes to be eligible for competition. The NCAA has minimum requirements for different students (freshmen, sophomores, juniors), all based on the final GPA required for graduation (2.0 at Binghamton). The standard currently applied at Binghamton requires students to be at 2.0 to begin the Fall, a stronger requirement but one that could be seen to affect athletes in different sport seasons differently. After considerable discussion, the committee narrowed the options to the following three:

Option # 1 (2.0 GPA every semester)

All student-athletes will have their eligibility certified each semester. At the beginning of each regular academic semester (Fall & Spring) all student-athletes

must present a minimum cumulative GPA of 2.0. Student-athletes who were not certified as eligible at the beginning of a regular academic semester may secure eligibility by satisfying the minimum cumulative GPA requirement of 2.0 at the conclusion of the semester or prior to the start of the next regular academic semester (does not apply to the sport of baseball).

Option # 2 (2.0 prior to the start of the next regular academic semester)

All student-athletes will have their eligibility certified each semester. At the beginning of each regular academic semester (Fall & Spring semesters) all student-athletes must present a minimum cumulative GPA of 2.0. Student-athletes who present a cumulative GPA below 2.0 must meet the NCAA minimum GPA requirements in order to be certified as eligible for one semester. Student-athletes must present a cumulative GPA of 2.0 prior to the start of the next regular academic semester or will be certified as ineligible (does not apply to the sport of baseball).

Option # 3 (Current Standards)

All student-athletes will have their eligibility certified each semester. At the beginning of each fall term all student-athletes must present a minimum cumulative GPA of 2.0. Student-athletes who were not certified as eligible in the fall may secure eligibility by satisfying the above criteria at any other time during that academic year (does not apply to the sport of baseball).

Ultimately, the IAC decided not to even vote, effectively keeping Option 3 in place. We plan to reconsider this option this academic year.

Missed Class Policy

The Binghamton Missed Class policy is defined in the Bulletin and addressed in the Faculty Staff Handbook. Essentially, if a student misses more than 25% of classes, the instructor may decide to deny the student the right to take the final exam. This affects student-athletes because they miss class for athletic competition. Athletics currently provides all student athletes with letters to present to faculty at the beginning of each semester, detailing the classes they will have to miss for competition.

The IAC considered the issue of how much to expect (or require) instructors to accommodate student-athletes missing class, how best to differentiate “excused” absence from unexcused absence, and other ways of ensuring that student-athletes missing class does not become points of contention with individual instructors, and more generally with the faculty as a whole.

In the end, we concluded that changing policies and writing new rules would introduce too much inflexibility and ultimately would not solve all problems, or even necessarily improve matters. We did not want to run the risk of introducing side effects such as “course clustering” (student-athletes taking in disproportionate numbers those courses whose instructors have “athlete-friendly” policies), for example.

The IAC did influence one change to the Athletics Department missed class policy. As a result of discussions with the IAC, the Athletic Department now does not allow student-athletes to sign up for courses that would cause them to miss 20% or more of class time. This introduces a 5% buffer between the policy from Athletics and that of the university, which could help avoid problems in some borderline cases. As of Summer 2011, this is an unofficial change in policy, but one that the Athletics advising staff is implementing.

Information Flow between Admissions and Athletics

One important aspect of intercollegiate athletics is the admissions policies of the university for student-athletes, as they relate to those for the general population of students. One extreme would be to require the same standards for both groups. Almost all universities, however, give some consideration for “talent admits”, for athletics or other special talents that applicants may possess. Too many special admits can change the culture of a team and can overextend the academic support systems that may be in place to help those student-athletes succeed.

Ultimately, Admissions decides on the admissibility of student-athlete applicants, implementing a university policy decided on by the administration and/or faculty. To make the best decisions, Admissions should know the success rate of student athletes with different academic profiles. At the same time, the Academic support office in Athletics should know the academic profile of students who are entering, so that specific support programs can be designed and implemented for each incoming student-athlete. And coaches should know what kinds of students could be admitted, so they can make decisions on who to recruit.

The IAC would like to position itself to be able to (1) improve the flow of data and dialog between Athletics and Admissions, so that each may have enough information to make effective decisions, and (2) provide oversight to the process, so that we may help evaluate and make recommendations about the university policies on student-athlete admission decisions.

Note that we are not considering anything about communication about particular cases and students. New rules govern what is allowed and not allowed, in terms of communication between Admissions and Athletics. The IAC is concerning self with making sure that higher-level policies are decided on appropriately.

To that end, the IAC has worked with Athletics, Admissions, and the Office of Institutional Research (OIR) to design and request an Annual Report on the Academic Progress of Student-Athletes. This report contains each student’s academic record, including both incoming Admissions data and performance at Binghamton, organized by team and academic year. Historical data for 10 years has been collected as well, along with data for transfer students.

OIR prepared the first report in Summer 2011, and the data was sent to the IAC Chair, Athletics academic support (Ed Scott), and Admissions (Tom Gaube). The IAC will consider the data and the report format for the first time in Fall 2011.

Respectfully submitted,

Michael J. Lewis, Committee Chair

Committee members

Neil Christian Pages	(Faculty, German and Russian Studies)
Edward Corrado	(Faculty, Libraries)
Patrick Regan	(Faculty, Political Science)
Jim Stark	(Faculty Athletics Representative (FAR) " <i>non-voting</i> ")
Jared Kirschenbaum	(SA President, Male undergraduate)
Rachel Gordon	(Female undergraduate)
Jim Norris	(Director of Athletics - " <i>non-voting ex officio</i> ")
Suzanne Howell	(VP for Student Affairs Designee - " <i>without vote</i> ")

Faculty Senate Library Committee
Annual Report 2010-2011

The Faculty Senate Library Committee met just twice during the 2010-2011 academic year. Both meetings were called at the request of the Dean of Libraries, John Meador, Jr.

At these meetings, the Committee was briefed on the state of the budget and the prospects for the coming year. While there is reason to believe the budget shortfall's impact on the Libraries will be not quite as severe as originally expected, there will, nevertheless, be some need for budgetary restraint. The Committee was also briefed on on-line research resources and databases, both in place and in contemplation. Some Committee members asked some questions and made some contributions drawn from their own experiences.

There were no inquiries or requests directed to the Committee from members of the academic community.

Respectfully submitted,

Gerald E. Kadish, Committee Chair

Committee members

Gerald E. Kadish, Chair

Rosemary Arrojo

Stephanie Berman

George Bobinski

Carroll Coates

Jill Dixon

Kathryn Flatley

Michael Lewis

Pamela Smart

Pamela. Stewart Fahs.

Faculty Senate Professional Standards Committee
Annual Report 2010-2011

During the past academic year three inquiries were submitted to the PSC. In one case, the PSC has contributed towards a resolution of the issue. The second case seems to be too intractable to ever be resolved, although the PSC tried hard to find ways to reduce the tension between the two parties. In a third case the PSC was asked to clarify an issue which we were able to do.

I wish to thank all of the committee members for their valuable participation and thoughtful contributions.

Respectfully submitted,

Arieh A. Ullmann, Committee Chair

Committee members

Sharon A. Bryant (DSON)

Marilyn Gaddis Rose (Comparative Literature)

Susan Strehle (English, fall semester)

Adrian Vasiu (Mathematical Sciences)

John Vestal (Theatre, spring semester)

University Undergraduate Curriculum Committee
Annual Report 2010-2011

During the 2010-2011 academic year, the UUCC continued its work certifying courses that meet Binghamton University General Education requirements and deciding on student petitions related to General Education requirements.

Additional committee activities included:

- Preliminary discussion of transfer policies with regard to Gen Ed., including foreign language. UUCC referred both matters to the Faculty Senate, which set up a Task Force. The Task Force was chaired by Sara Reiter and also included other members of UUCC.
- Note was taken that all the Schools had agreed to handle student appeals concerning Gen Ed for transfer courses through their school's transfer appeals committee, removing the need to set campus-wide policy on issues such as CLEP examinations.
- Some time was spent on helping Liz Abate modify the Gen Ed course submission web-form in an attempt to elicit all the necessary information for the decision to approve or disapprove the course. The UUCC continually faces the need to ask for additional information about submissions.
- The Global Interdependencies (G) Gen Ed requirement was rewritten after the Gen Ed Task Force had advised the UUCC that there was no longer a need to include a section on the foundations of Western Civilization, because of changes to the SUNY-wide Gen Ed policies. The new requirement was later approved by the Faculty Senate.
- UUCC recommended and the Senate subsequently adopted a policy that student appeals could be taken to the Vice Provost for Undergraduate Education, after consideration by UUCC.
- UUCC has not been willing to approve any new distance learning courses for the Oral (O) Gen Ed and the committee decided not to seek ways to approve such courses in the future.
- UUCC is currently supporting the decision of the Biology Dept that AP Biology can only count for college credit if it is taken in High School after prior courses on biology and chemistry.

The Chair and the committee would like to express its gratitude to Liz Abate, our coordinator of General Education and Assistant for Undergraduate Education, for the outstanding assistance and coordination she always provided. And the Chair would like to express his appreciation to the members of the committee who consistently worked through our agenda with collective acumen and good judgment.

Attached, as required, is this year's report on university-wide course offerings under the following rubrics: SCHL, GLST, and CDCI.

Committee Members:

Les Lander, Computer Science, Committee Chair
Laura Anderson, Mathematics
Lisa Hrehor, Health and Physical Education
Michael Lawson, Human Development
Ingeborg Majer-O'Sickey, German and Russian Studies
Sarah Maximiek, Library
Carolyn Pierce, Decker School of Nursing
Mark Reisinger, Geography
Sara Reiter, School of Management
Jim Stark, Art

Adam Slomko, undergraduate student
Liz Abate
Terrence Deak
Jennifer Jensen
Don Loewen

Report on University-Wide (UNIV) Course Offerings
2010-2011 Academic Year

Attached please find a complete listing of all courses offered during the 2010-2011 academic year under the following rubrics:

- Binghamton Scholars Program – SCHL
- Global Studies Minor – GLST
- Career Development Center Internships – CDCI

No courses were offered under the UNIV rubric during the 2010-2011 academic year.

The UUCC approved one new course under the CDCI rubric: CDCI 200, Bridging Academics and Careers, a 2-credit course offered during the Summer Session. The UUCC has requested that the Career Development Center submit a brief follow-up report on this course in September 2011. Other courses offered under the CDCI rubric during the 2009-2010 academic year were all permanent courses previously approved by the UUCC.

Courses offered under the GLST rubric were approved by the UUCC in previous years. Courses offered under the SCHL rubric were either previously approved permanent courses or topics courses approved by the UUCC.

Academic Computing & Ed Tech Committee (ACET)
Annual Report 2010-2011

The committee did not meet, but there was continued activity on two items left over from last year: the continuing discussion of governance as it relates to IT activities which directly affect faculty and students (particularly Blackboard and its upgrades), and the completion of the project to convert faculty, students and staff from Exchange email to Gmail/Bmail.

Other activities normally of interest to the committee that have continued are: additional classrooms have been built or renovated, new tools for web conferencing and for recording lectures have been introduced, the satisfaction of faculty and students with the services provided by IT were measured by satisfaction surveys (most recent was Spring 2011) and satisfaction has remained high.

Respectfully submitted,

Jean-Pierre Mileur, Committee Chair

Committee members:

Kenneth Chiu
Sungdai Cho
Edward Corrado
Karen Kozlowski
Tom Kowalik
Tongshu Ma
Peter Mileur (Chair)
Mark Reed
Adam Slomko
Andre Tucci
James VanVoorst
Bruce White
James Wolf
Stephen Zahorian

Committee on the University Environment (CUE)
Annual Report 2010-2011

The Committee on the University Environment (CUE) met four times during the academic year 2010-2011. Meetings took place in November and December 2010, March and May (twice) 2011.

Issues addressed by CUE included

A. The renovation and development of Lake Lieberman: Graney presented detailed plans for Lake Lieberman's re-design to handle water outflow from campus. A doctoral student working under Dr. J. Titus, Biological Sciences, will study the effectiveness of the Lake in retaining nutrients and decreasing run-off. To support this project and document the effectiveness of Binghamton's efforts in run-off control, an additional weir to monitor outflow was added to the design and native plantings are being chosen for effective filtering. Sally Oaks continues working with Graney and Titus on this project.

B. Trees on campus: CUE reviewed tree removals necessitated by the building on campus and in the ITC area. For the trees around the wetland area of Lake Lieberman and in central campus, CUE recommended that the list of tree species developed by CUE's Tree Committee (est. 2009) be consulted. The list needs updating in the face of new tree diseases, a task for Fall 2011.

C. Campus construction. CUE reviewed and discussed construction affecting many areas on campus, including the Central Campus renovation/water line replacement, the Library Courtyard construction of an extension to Jazzmans and additions to parking around the Library. CUE members visited these sites, found that parking extensions were NOT impacting healthy or desirable trees, and advised that specific trees in the Courtyard be saved. This latter advice was followed. CUE recommended wildflower plantings in the Courtyard. Assistance from CUE members in finding ideal plantings was offered (a fall 2011 project).

C. Campus transportation issues: car reduction and programs facilitating bike use were reviewed. Increased numbers of bike racks on campus are being well used, although more are needed in strategic locations. Student groups are initiating program of "campus bikes" that can be picked up and dropped off as needed. A loaner car program is currently in use although primarily by freshman.

D. Nature Preserve Research Use. Two proposals for research use of the Nature Preserve were posted for review. One proposal for a study of decomposition was further discussed in meeting and approved.

D. Mowing and pesticide use on campus. CUE reviewed the annual Pesticide plan from Physical Facilities, presented by S. Gow. Pesticide use is down from past. CUE asked for none to be used in areas where runoff would affect Nature Preserve and suggested alternatives. CUE also asked that, after construction, mowing not occur in specific areas where the natural assemblage of plants is used in teaching ecology. (Current construction has disrupted some of these areas). CUE also recommended several other areas not be mowed. A clear policy and map of areas to mow or not is needed to guide Physical Facilities.

E. Deer destruction in the Nature Preserve. The effects of the overpopulation on the Nature Preserve is clearly documented through monitoring re-growth in exclosures in the Preserve. Action to reduce deer populations was discussed during the academic year. Then, in July 2011, a plan was proposed in a meeting of President Magrath, Prof. R. Andrus, Co-chairs of CUE and D. Horvath, NP Steward. This will be discussed and voted on by full CUE membership fall 2011.

F. CUE recommends that the Nature Preserve Steward be made a voting member, which will require a vote of the Faculty Senate.

Respectfully submitted,



Anne B. Clark

Committee on the University Environment Membership 2010-2011

Anne B. Clark (Harpur/Sci Math/Biology; Chair)
Ralph Miller (Harpur/Sci Math/Psychology)
Don Brister (Libraries)
Julian Shepherd (Harpur/Sci Math/Biology)
Joseph Graney (Harpur/Sci Math/Geology)
Shuxia Susan Lu (Provost's appointee)
Carol Miles (Provost's appointee)
Jian Zhou (Provost's appointee)
Danielle Kutas (undergraduate rep)
Jenna Goldin (undergraduate rep)
Jim Van Voorst (VP for Administration; Co-Chair)
Kelley Wemette (PEC rep)
Rene Coderre (Residential Life)
Sally Oaks (Physical Facilities)
*Juliet Berling (Environmental Professional;)
Dylan Horvath (Nature Preserve Steward, non-voting)
*Took a new job during fall 2010 and was not replaced during 2010-11.

Faculty Senate Committee on Committees
Annual Report 2010-2011

In Fall 2010 there were only a few vacancies which needed to be filled, this was done by the chair. The committee members met on February 25, 2011. Angelique Jenks-Brown agreed to continue as chair of the committee. At the meeting, committee members volunteered to fill vacancies based on faculty expressing an interest via the faculty survey, "Faculty Interest in Serving on Committees in 2011-2012", and direct communication. All other committee work was done via email.

In December 2010 the committee chair submitted a request to the Faculty Senate Executive Committee with regard to Assessment Category Team (ACT) term limits and team chairs. The request was passed and the "Assessment of General Education at Binghamton University: Program and Guidelines" was revised. In Fall 2011 the Committee on Committees will continue its work to enact the revised guidelines.

Respectfully submitted,
Angelique Jenks-Brown, Committee Chair

Committee members:

Sharon Bryant, Decker School of Nursing
Beth Burch, School of Education
Manus Chatterji, School of Management
J. David Hacker, Harper/Social Science/ History
Scott Henkel, Harper/Humanities/English
Angelique Jenks-Brown, Libraries
Leslie Lander, Watson/Computer Science

Faculty Senate Evaluation Coordinating Committee
Annual Report 2010-2011

The Faculty Senate Evaluation Coordinating Committee (ECC) convened in October 2010 and elected Alistair Lees as its chair for the Fall 2010 semester. Using the precedent of reviewing administrators on a regular schedule, the committee scheduled a review of Patricia W. Ingraham in her role as Dean of the College of Community and Public Affairs (CCPA).

Surveys were sent electronically by Survey Monkey to faculty and staff in the CCPA and several other individuals that had been suggested by Dr. Ingraham (people she had regular contact with, but were outside the CCPA). The questions on the survey were chosen by the ECC and Dr. Ingraham was given the opportunity to comment on the draft survey before it was distributed. Attached to the survey were materials that she had provided at the request of the ECC. These were her curriculum vitae, her job description and a narrative evaluation related to the five areas of communication skills, leadership, human relations, knowledge and expertise, and organizational skills.

The survey was made available online on November 18, 2010 and it was open until December 7, 2010. The survey was sent to 56 people, and 30 people responded.

The FSECC met on December 8, 2010 to review the findings. The report was then prepared by Alistair Lees on behalf of the ECC and submitted to Dean Ingraham's immediate supervisor (Interim Provost Jean-Pierre Mileur) and the Faculty Senate Executive Committee. Dean Ingraham subsequently had the option to comment on the report, which she did so.

On December 8, 2010, the ECC elected Thomas Sinclair as its chair for the Spring 2011 semester.

Respectfully submitted,

Alistair Lees, Committee Chair

Committee members:

Sarah Maximiek, Libraries

Gale Spencer, Decker School of Nursing

Alistair Lees, Chemistry

Ariana Gerstein, Cinema

Timothy Singler, Mechanical Engineering

Sara Reiter, School of Management

Clifford Kern, Economics

Thomas Sinclair, CCPA