



Fall Graduate Admission and Enrollment Report

The Graduate School
May 2016



TABLE OF CONTENTS

PART 1: APPLICATIONS AND ADMISSIONS	3
PART 2: TEST SCORES	10
PART 3: GRADUATE STUDENT ENROLLMENT	16
Table 1.1 Changes In Applications And Admissions For Fall Semesters, 2011-2015	3
Table 1.2 Applications And Admissions For Fall Semesters, 2011-2015	4
Table 1.3 Applications And Admissions By Ethnicity And Gender For Fall Semesters, 2011-2015.....	5
Table 1.4 Fee-Paid Applications By School For Fall Semesters, 2011-2015	7
Table 2.1 Average GRE Percentiles For Fall Semesters, 2006-2015	10
Table 2.2 Average GRE Percentiles By School For Fall Semesters, 2006-2015	11
Table 2.3 Average Total GMAT Scores for Fall Semesters, 2006-2015	15
Table 3.1 Total Graduate Enrollment by Gender for Fall Semesters, 2006-2015	16
Table 3.2 Total Graduate Enrollment by Ethnicity and Gender for Fall Semesters, 2011-2015	16
Table 3.3 Graduate Enrollment by School for Fall Semesters, 2006-2015.....	18
Table 3.5 Graduate Enrollment In Watson School Of Engineering For Fall Semesters, 2006-2015	23
Table 3.6 Graduate Enrollment In Graduate School Of Education For Fall Semesters, 2006-2015	25
Table 3.7 Graduate Enrollment In School Of Management For Fall Semesters, 2006-2015	28
Table 3.8 Graduate Enrollment In Decker School Of Nursing For Fall Semesters, 2006-2015	29
Table 3.9 Graduate Enrollment In College Of Community And Public Affairs For Fall Semesters, 2006-2015	31
Table 3.10 Graduate Enrollment In Materials Science And Engineering For Fall Semesters, 2006-2015	32
Table 3.11 International Graduate Enrollment For Fall Semesters, 2006-2015	33
Table 3.12 International Graduate Enrollment By School For Fall Semesters, 2006-2015	34
Figure 1.1 Application To Enrollment Profile For Fall Semesters, 2011-2015	3
Figure 1.2 Applications, Admissions, and Matriculations by Ethnicity, Fall 2015	6
Figure 1.3 Fee-Paid Applications by School for Fall Semesters, 2011-2015	9
Figure 2.1 Average GRE Percentiles Of Applicants, Admittees, And Enrollees For Fall Semesters, 2006-2015	10
Figure 2.2 Average GRE Percentiles For New Enrolled Students By School For Fall Semesters, 2006-2015	14
Figure 2.3 Average GMAT Scores of Applicants, Admittees, and Enrollees for Fall Semesters, 2006-2015	15
Figure 3.1 Total Graduate Enrollment By Ethnicity, Fall 2015	17
Figure 3.2 Graduate Enrollment For Fall Semesters, 2006-2015.....	33

PART 1: APPLICATIONS AND ADMISSIONS

TABLE 1.1 CHANGES IN APPLICATIONS AND ADMISSIONS FOR FALL SEMESTERS, 2011-2015

Year	2011	2012	2013	2014	2015
Applications Considered for Admission	3,436	3,535	4,133	4,677	4,498
<i>% Change</i>	-26.8%	2.9%	16.9%	13.2%	-3.8%
Offered Admission	1,720	1,932	2,269	2,694	2,908
<i>% Change</i>	2.4%	12.3%	17.4%	18.7%	7.9%

FIGURE 1.1 APPLICATION TO ENROLLMENT PROFILE FOR FALL SEMESTERS, 2011-2015

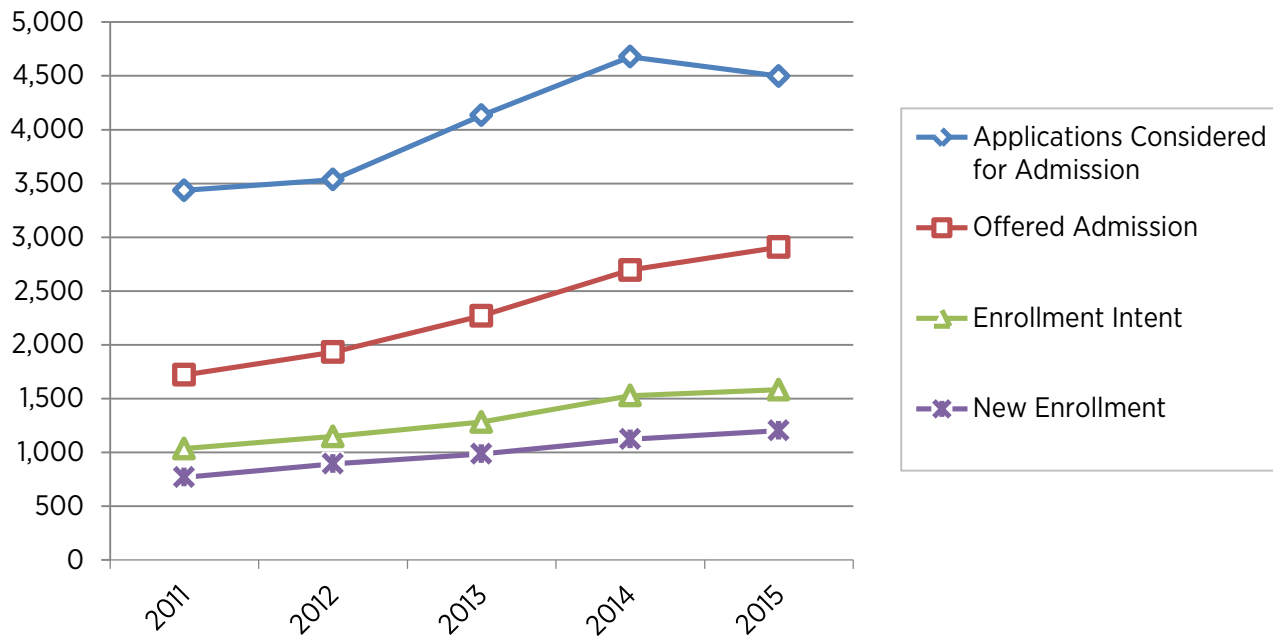


TABLE 1.2 APPLICATIONS AND ADMISSIONS FOR FALL SEMESTERS, 2011-2015

Year	2011	2012	2013	2014	2015
Total Degree Applications Received	4,490	4,532	5,857	6,843	6,427
Fees Not Paid	1,026	731	1,667	2,000	1,844
<i>% of Total Degree Applications</i>	23%	16%	28%	29%	29%
Fee-Paid	3,464	3,801	4,190	4,843	4,583
Application Withdrawn	24	252	27	109	62
Deferred before Decision	1	14	30	57	23
Considered for Admission	3,439	3,535	4,133	4,677	4,498
Complete/Forwarded	0	0	0	0	0
Incomplete after Review	149	46	109	0	0
Denied Admission	1,497	1,499	1,646	1,984	1,586
Offered Admission	1,720	1,932	2,269	2,694	2,908
<i>Selectivity Rate (%)</i>	50%	55%	55%	58%	65%
Provisional Admits	1	37	176	1	0
Deferred after Decision	73	58	109	146	109
Enrollment Intent	1,034	1,147	1,281	1,527	1,582
Deposit Waived - Withdrawn	6	7	8	2	4
Deposit Paid - Withdrawn	135	173	236	373	270
Deposit Waived	67	34	92	114	135
Deposit Paid	826	933	945	1,038	1,104
<i>Yield Rate (%)</i>	60%	59%	56%	57%	54%
New Enrollment	769	893	986	1,122	1,202
<i>% Change from Previous Year</i>	-7%	16%	10%	14%	7%

TABLE 1.3 APPLICATIONS AND ADMISSIONS BY ETHNICITY AND GENDER FOR FALL SEMESTERS, 2011-2015

Year	2011			2012			2013			2014			2015		
Gender	M	F	Total	M	F	Total	M	F	Total	M	F	Total	M	F	Total
Applicants															
International	926	808	1,734	1,014	1,027	2,041	1,441	1,095	2,536	1,853	1,226	3,079	1,772	1,146	2,918
Hispanic/Latino	46	55	101	45	59	104	48	69	117	63	74	137	61	71	132
Native American	6	12	18	8	9	17	5	6	11	8	6	14	9	11	20
Asian	64	76	140	108	93	201	84	72	156	102	109	211	72	97	169
Black/African American	40	61	101	42	61	103	38	52	90	40	50	90	46	66	112
Native Hawaiian/Pac. Isldr	16	5	21	14	12	26	4	4	8	5	1	6	0	2	2
White	540	742	1,282	549	691	1,240	541	706	1,247	589	694	1,283	561	667	1,228
Unknown/Not Reported	30	37	67	38	31	69	13	12	25	12	11	23	0	2	2
Total	1,668	1,796	3,464	1,818	1,983	3,801	2,174	2,016	4,190	2,672	2,171	4,843	2,521	2,062	4,583
Offered Admission															
International	458	275	733	518	373	891	748	523	1,271	999	608	1,607	1,094	670	1,764
Hispanic or Latino	22	31	53	20	26	46	31	34	65	42	40	82	41	39	80
Native American	2	3	5	5	2	7	3	5	8	4	3	7	4	10	14
Asian	37	44	81	66	53	119	56	46	102	70	70	140	54	61	115
Black or African American	22	25	47	19	33	52	15	30	45	21	26	47	35	43	78
Native Hawaiian/ Pac. Isldr	10	4	14	8	9	17	4	2	6	4	1	5	0	1	1
White	333	392	725	341	378	719	344	410	754	386	406	792	391	462	853
Unknown/Not Reported	25	37	62	42	39	81	11	7	18	14	0	14	1	2	3
Total	909	811	1,720	1,019	913	1,932	1,212	1,057	2,269	1,557	1,167	2,724	1,620	1,288	2,908
New Enrollment															
International	124	86	210	166	115	281	232	153	385	312	176	488	317	208	525
Hispanic or Latino	12	20	32	14	13	27	19	23	42	25	20	45	25	23	48
Native American	0	1	1	5	0	5	3	3	6	1	2	3	3	5	8
Asian	23	28	51	47	33	80	35	29	64	39	37	76	33	39	72
Black or African American	8	7	15	15	16	31	9	22	31	10	21	31	25	26	51
Native Hawaiian/ Pac. Isldr	7	2	9	6	8	14	3	2	5	2	0	2	0	1	1
White	207	206	413	211	205	416	216	230	446	223	243	466	222	269	491
Unknown/Not Reported	14	24	38	18	21	39	4	3	7	9	2	11	3	3	6
Total	395	374	769	482	411	893	521	465	986	621	501	1,122	628	574	1,202

Note: Totals by category not reported in last year report

FIGURE 1.2 APPLICATIONS, ADMISSIONS, AND MATRICULATIONS BY ETHNICITY, FALL 2015

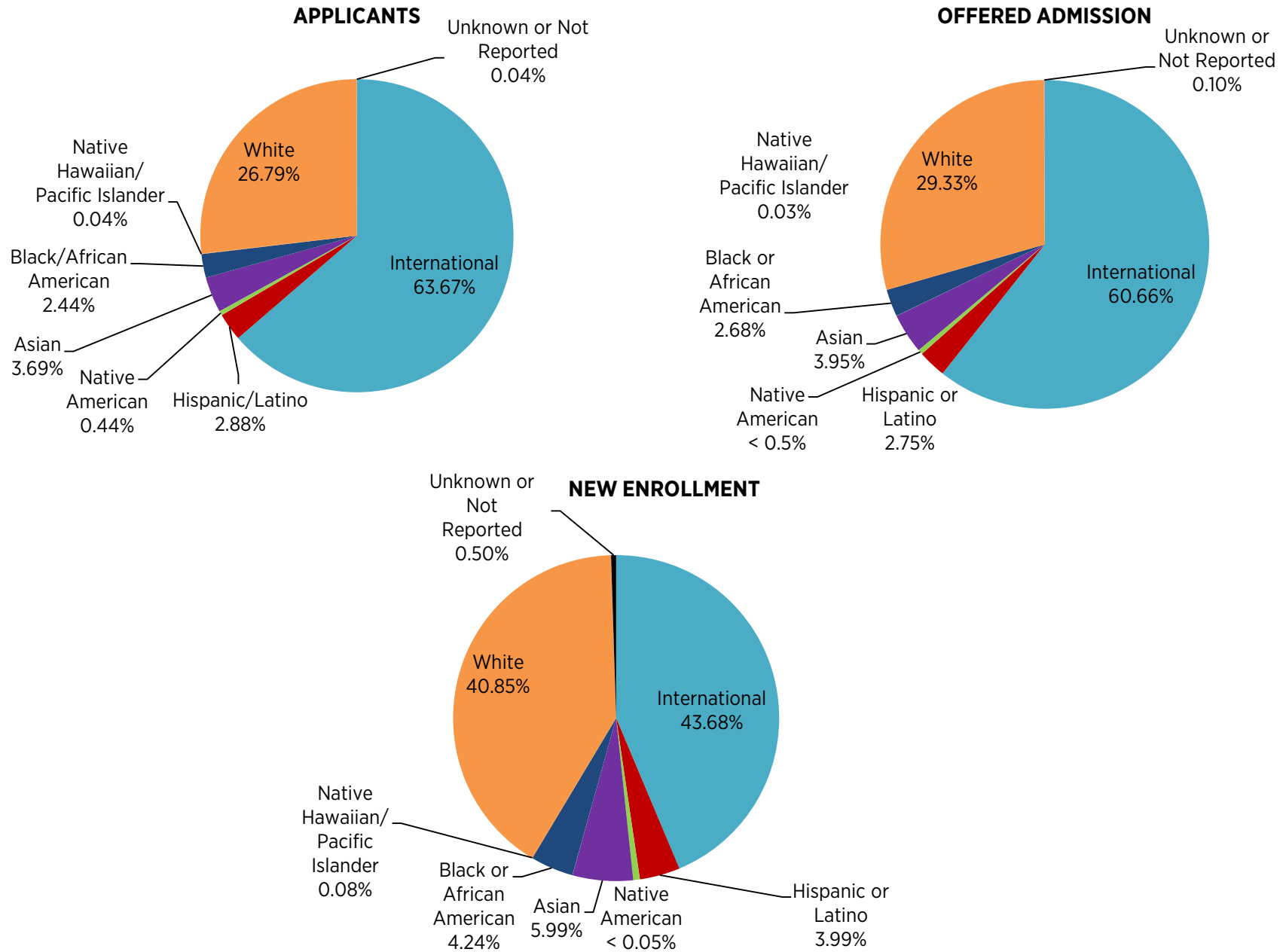


TABLE 1.4 FEE-PAID APPLICATIONS BY SCHOOL FOR FALL SEMESTERS, 2011-2015

Year	2011	2012	2013	2014	2015	% Change
COLLEGE OF COMMUNITY & PUBLIC AFFAIRS						
Community and Public Affairs (PhD)	N/A	N/A	12	14	13	-7%
Public Administration (MPA)	93	107	140	145	136	-6%
Social Work (MSW)	154	131	161	156	149	-4%
Student Affairs Administration (MS)	32	29	31	34	30	-12%
Total Applications	279	267	344	349	328	
% Change	15%	-4%	29%	1%	-6%	
GRADUATE SCHOOL OF EDUCATION						
Professional Education (MSEd)	101	75	85	77	71	-8%
Professional Education (MAT)	66	53	33	40	45	13%
Educational Theory (EdD)	18	20	15	8	11	38%
Educational Leadership Certificate	5	7	8	7	11	57%
Total Applications	190	155	141	132	138	
% Change	16%	-18%	-9%	-6%	5%	
GRADUATE SCHOOL - MATERIALS SCIENCE AND ENGINEERING						
Certificate Programs	N/A	4	N/A	N/A	N/A	N/A
Master's - MSE	10	27	31	42	54	29%
PhD - MSE	13	22	35	32	40	25%
Total Applications	23	53	66	74	94	
% Change	N/A	130%	25%	12%	27%	
HARPUR COLLEGE OF ARTS AND SCIENCES						
Anthropology	104	101	81	100	81	-19%
Art History	34	27	36	22	27	23%
Asian and Asian-American Studies	N/A	15	17	23	19	-17%
Biology	107	100	80	77	95	23%
Chemistry	39	53	50	76	53	-30%
Comparative Literature	31	28	40	38	26	-32%
Economics	150	143	121	128	111	-13%
English	93	114	84	90	89	-1%
Geography	26	24	26	26	37	42%
Geological Sciences	21	26	17	28	32	14%
History	66	80	85	82	51	-38%
Mathematics	86	101	82	100	83	-17%
Music	42	39	32	37	28	-24%
Philosophy - SPEL	34	31	39	77	41	-47%
Philosophy - PIC	16	4	N/A	N/A	N/A	N/A
Physics	12	19	25	24	31	29%
Political Science	50	66	68	71	47	-34%
Psychology- Neuroscience	24	50	30	41	31	-24%
Psychology-Clinical	213	240	255	256	225	-12%
Psychology-Cognitive	25	28	25	30	30	0%
Romance Languages	1	5	4	5	2	-60%
Sociology	40	47	50	46	46	0%
Theater	10	10	6	7	6	-14%
Translation Studies	16	20	20	27	34	26%
Total Applications	1,240	1,371	1,273	1,411	1,225	
% Change	-7%	11%	-7%	11%	-13%	

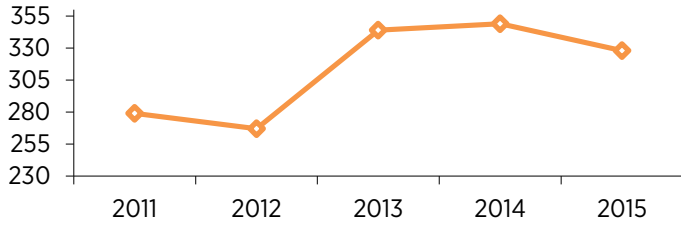
TABLE 1.4 (CONTINUED)

FEE-PAID APPLICATIONS BY SCHOOL FOR FALL SEMESTERS, 2011-2015

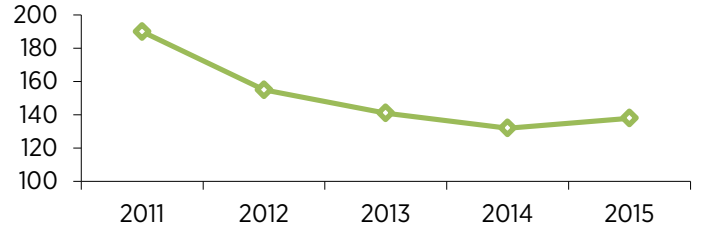
Year	2011	2012	2013	2014	2015	% Change
SCHOOL OF MANAGEMENT						
MBA	159	188	187	177	178	1%
MS Accounting	432	633	521	604	495	-18%
Ph.D.	51	65	59	68	58	-15%
Exec.MBA-Health Care	2	2	N/A	N/A	N/A	N/A
Exec.MBA-Corporate	22	1	2	N/A	N/A	N/A
Watson BS/SOM MBA Combined	14	10	10	18	19	6%
Professional MBA - Manhattan	37	48	33	34	46	35%
Executive MBA - Manhattan	32	2	30	7	3	-57%
Total Applications	749	949	842	908	799	
<i>% Change</i>	-13%	27%	-11%	8%	-12%	
DECKER SCHOOL OF NURSING						
Certificate	10	7	5	9	17	89%
Master's	90	92	82	74	71	-4%
DNP	6	9	7	5	2	-60%
PhD	4	3	5	7	5	-29%
Total Applications	110	111	99	95	95	
<i>% Change</i>	41%	1%	-11%	-4%	0%	
WATSON SCHOOL OF ENGINEERING						
Biomedical Engineering	29	35	42	54	60	11%
Computer Science	372	353	612	854	846	-1%
Electrical and Computer Engineering	220	240	404	464	425	-8%
Mechanical Engineering	88	98	126	183	184	1%
Industrial Engineering	149	157	219	281	356	27%
Systems Science	15	12	22	38	33	-13%
Total Applications	873	895	1,425	1,874	1,904	
<i>% Change</i>	1%	3%	59%	32%	2%	

FIGURE 1.3 FEE-PAID APPLICATIONS BY SCHOOL FOR FALL SEMESTERS, 2011-2015

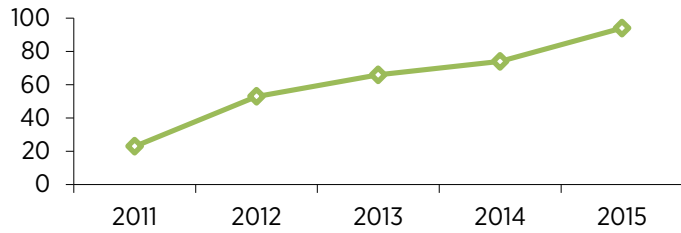
College of Community and Public Affairs



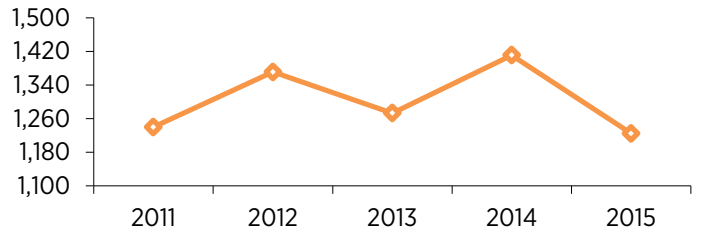
Graduate School of Education



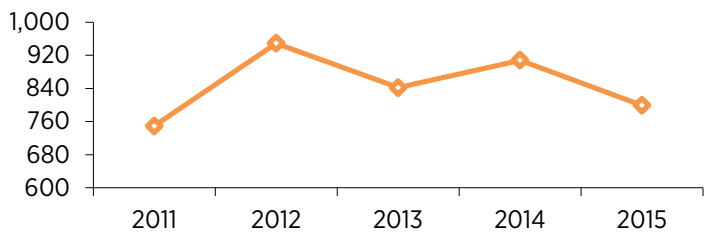
Graduate School - Materials Science and Engineering



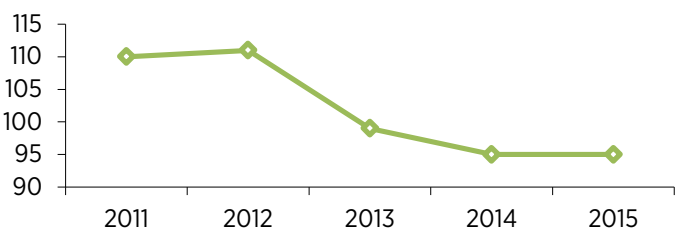
Harpur College of Arts and Sciences



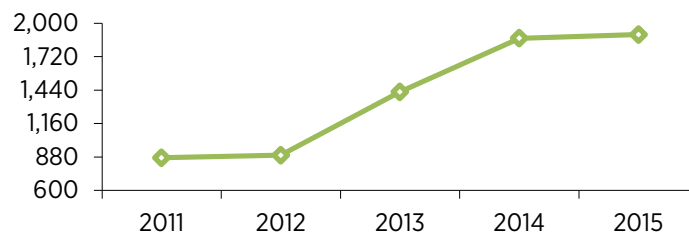
School of Management



Decker School of Nursing



Watson School of Engineering



PART 2: TEST SCORES

TABLE 2.1 AVERAGE GRE PERCENTILES FOR FALL SEMESTERS, 2006-2015

	Year	2006	2007	2008	2009	2010	2011	2012	2013	2014	2015
All Applicants	V	57	55	54	53	55	56	56	45	43	43
	Q	59	64	67	68	67	68	69	68	66	66
	A	44	40	36	36	36	35	37	31	31	32
Offered Admission	V	58	56	55	53	55	56	55	45	43	43
	Q	60	64	66	71	70	71	72	71	70	70
	A	44	41	38	35	34	33	35	30	31	31
Enrolled	V	57	54	54	53	54	58	55	45	44	46
	Q	53	59	60	61	65	63	66	63	64	64
	A	46	42	41	39	38	39	40	33	33	35

V = VERBAL **Q** = QUANTITATIVE **A** = ANALYTICAL WRITING

FIGURE 2.1

AVERAGE GRE PERCENTILES OF APPLICANTS, ADMITTEES, AND ENROLLEES FOR FALL SEMESTERS, 2006-2015

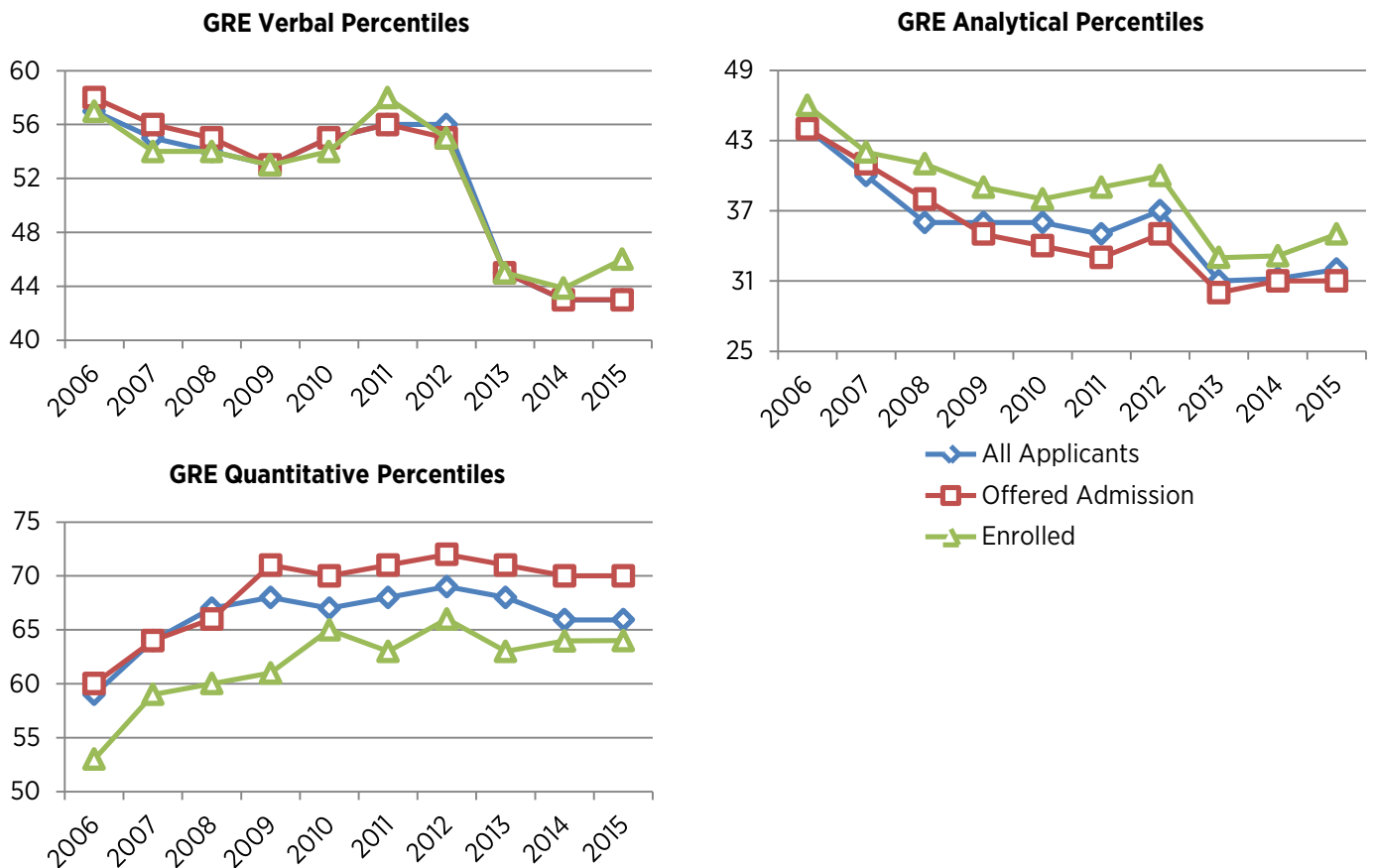


TABLE 2.2 AVERAGE GRE PERCENTILES BY SCHOOL FOR FALL SEMESTERS, 2006-2015

COLLEGE OF COMMUNITY AND PUBLIC AFFAIRS

Year		2006	2007	2008	2009	2010	2011	2012	2013	2014	2015
All Applicants	V	41	44	48	40	54	56	48	41	41	46
	Q	36	34	45	45	54	58	55	64	61	56
	A	41	45	40	30	36	41	36	28	32	36
Offered Admission	V	42	45	54	43	53	63	52	47	48	53
	Q	37	34	43	30	54	55	53	59	57	52
	A	42	53	50	32	36	38	39	34	40	43
Enrolled	V	37	44	40	35	45	48	43	46	43	53
	Q	28	28	25	22	39	37	37	44	39	47
	A	40	63	39	15	49	37	42	43	43	41

GRADUATE SCHOOL OF EDUCATION

Year		2006	2007	2008	2009	2010	2011	2012	2013	2014	2015
All Applicants	V	52	53	54	52	52	58	57	51	50	54
	Q	39	10	44	45	47	48	54	48	44	40
	A	44	49	47	44	43	46	48	44	45	47
Offered Admission	V	56	56	54	57	58	59	62	57	55	63
	Q	43	44	44	47	47	46	54	47	43	39
	A	49	54	49	46	49	49	53	50	53	57
Enrolled	V	55	56	56	55	57	60	68	50	53	62
	Q	42	41	45	49	47	45	59	39	41	37
	A	50	54	50	46	52	51	62	45	51	53

GRADUATE SCHOOL - MATERIALS SCIENCE AND ENGINEERING

Year		2006	2007	2008	2009	2010	2011	2012	2013	2014	2015
All Applicants	V	N/A	N/A	N/A	N/A	47	51	49	39	39	35
	Q	N/A	N/A	N/A	N/A	86	89	83	86	84	87
	A	N/A	N/A	N/A	N/A	24	17	28	19	20	19
Offered Admission	V	N/A	N/A	N/A	N/A	57	44	61	47	43	40
	Q	N/A	N/A	N/A	N/A	83	86	84	89	87	91
	A	N/A	N/A	N/A	N/A	23	12	37	25	23	20
Enrolled	V	N/A	N/A	N/A	N/A	57	41	54	44	43	50
	Q	N/A	N/A	N/A	N/A	83	85	89	81	83	76
	A	N/A	N/A	N/A	N/A	23	12	29	21	27	39

TABLE 2.2 (CONTINUED) AVERAGE GRE PERCENTILES BY SCHOOL FOR FALL SEMESTERS, 2006-2015

HARPUR COLLEGE OF ARTS & SCIENCES

Year	2006	2007	2008	2009	2010	2011	2012	2013	2014	2015	
Social Sciences											
All Applicants	V	62	60	60	60	60	65	63	59	57	57
	Q	57	59	62	63	63	63	65	58	59	59
	A	47	44	41	42	42	41	42	43	44	46
Offered Admission	V	63	63	67	65	66	73	68	63	61	61
	Q	55	56	51	66	67	65	66	60	63	62
	A	49	47	60	47	46	49	46	46	48	47
Enrolled	V	57	59	64	69	67	73	66	63	61	61
	Q	46	50	54	57	64	57	60	48	54	53
	A	47	46	49	51	43	50	47	31	50	51
Humanities											
All Applicants	V	69	71	71	74	60	75	71	65	65	64
	Q	41	44	54	50	63	49	48	46	42	43
	A	58	54	53	56	42	56	55	53	52	53
Offered Admission	V	74	73	77	75	81	80	76	67	68	65
	Q	41	44	45	50	49	47	50	48	44	42
	A	59	58	60	60	33	56	57	52	54	54
Enrolled	V	74	70	69	68	74	79	76	61	60	60
	Q	38	42	43	43	47	43	45	45	41	46
	A	57	53	55	57	58	55	59	46	45	49
Maths & Sciences											
All Applicants	V	63	63	61	62	64	66	66	63	60	63
	Q	61	67	67	68	68	67	69	67	64	63
	A	52	50	44	49	46	48	51	51	49	53
Offered Admission	V	61	61	58	58	64	69	65	61	59	61
	Q	70	71	72	74	70	72	78	73	76	73
	A	45	45	41	43	41	49	48	45	43	48
Enrolled	V	60	58	58	58	62	63	64	63	61	59
	Q	73	68	72	75	68	70	75	68	72	64
	A	48	41	43	45	42	45	48	45	47	46

V = VERBAL **Q** = QUANTITATIVE **A** = ANALYTICAL WRITING

TABLE 2.2 (CONTINUED) AVERAGE GRE PERCENTILES BY SCHOOL FOR FALL SEMESTERS, 2006-2015

DECKER SCHOOL OF NURSING

Year	2006	2007	2008	2009	2010	2011	2012	2013	2014	2015	
All Applicants	V	56	45	42	N/A	51	53	68	47	49	51
	Q	39	34	46	N/A	36	49	47	34	47	34
	A	38	42	30	N/A	28	43	31	38	44	31
Offered Admission	V	61	43	39	N/A	48	53	59	47	48	51
	Q	32	34	48	N/A	19	49	34	34	44	34
	A	42	44	32	N/A	41	43	32	38	39	31
Enrolled	V	47	39	32	N/A	16	46	61	47	66	79
	Q	25	37	31	N/A	18	44	42	40	45	60
	A	41	41	0	N/A	41	42	40	36	74	33

WATSON SCHOOL OF ENGINEERING

Year	2006	2007	2008	2009	2010	2011	2012	2013	2014	2015	
All Applicants	V	44	43	42	37	37	40	40	30	30	31
	Q	78	80	81	81	80	80	80	77	73	73
	A	28	26	22	19	17	16	20	17	19	20
Offered Admission	V	46	45	43	41	41	41	42	33	32	32
	Q	78	80	81	82	82	82	81	81	77	75
	A	29	27	22	21	19	17	21	18	20	21
Enrolled	V	45	42	39	35	35	38	35	29	31	34
	Q	78	80	78	76	79	81	79	79	74	71
	A	31	27	23	19	19	16	21	16	20	23

V = VERBAL **Q** = QUANTITATIVE **A** = ANALYTICAL WRITING

FIGURE 2.2 AVERAGE GRE PERCENTILES FOR NEW ENROLLED STUDENTS BY SCHOOL FOR FALL SEMESTERS, 2006-2015

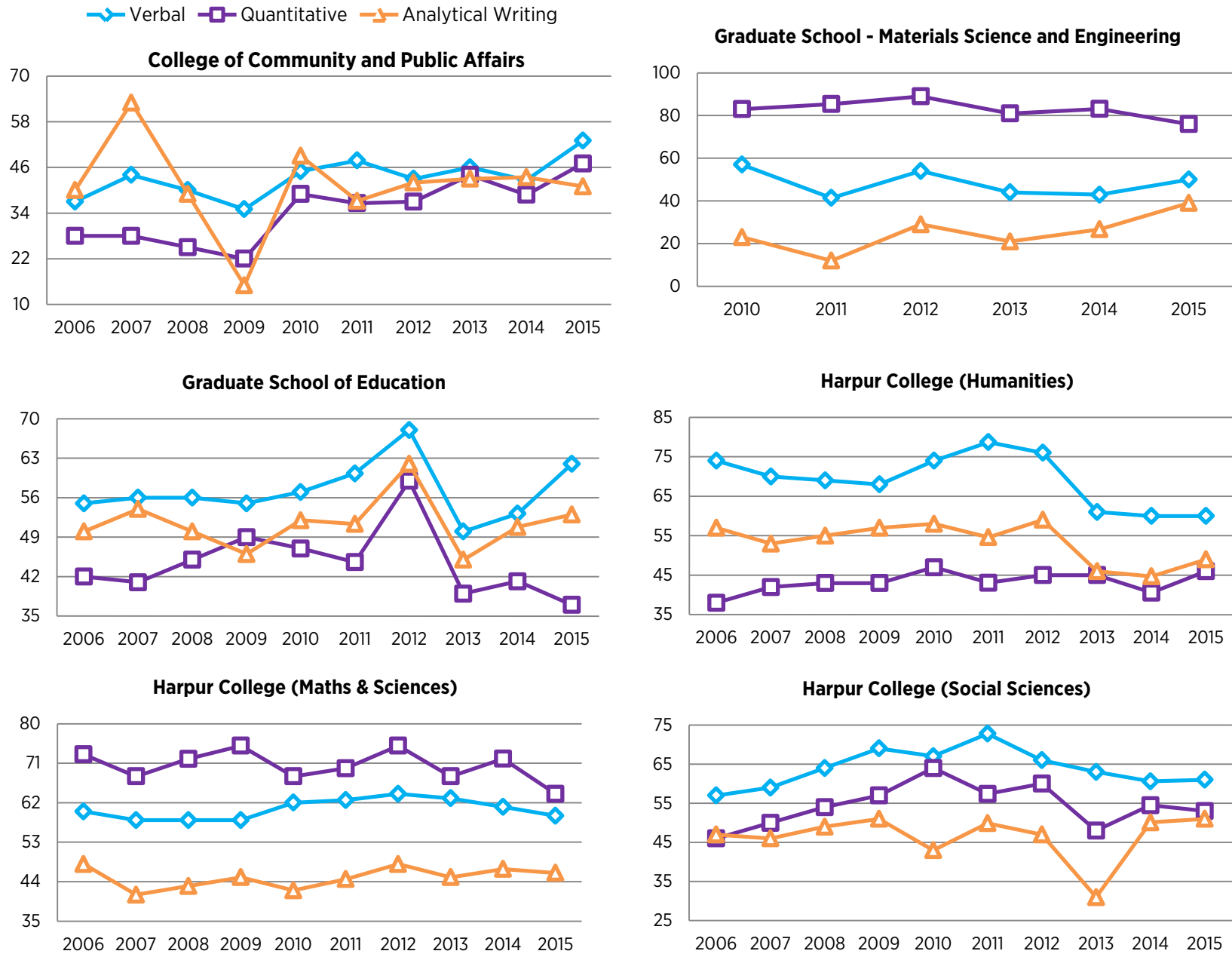


FIGURE 2.2 (CONTINUED)

AVERAGE GRE PERCENTILES FOR NEW ENROLLED STUDENTS BY SCHOOL FOR FALL SEMESTERS, 2006-2015

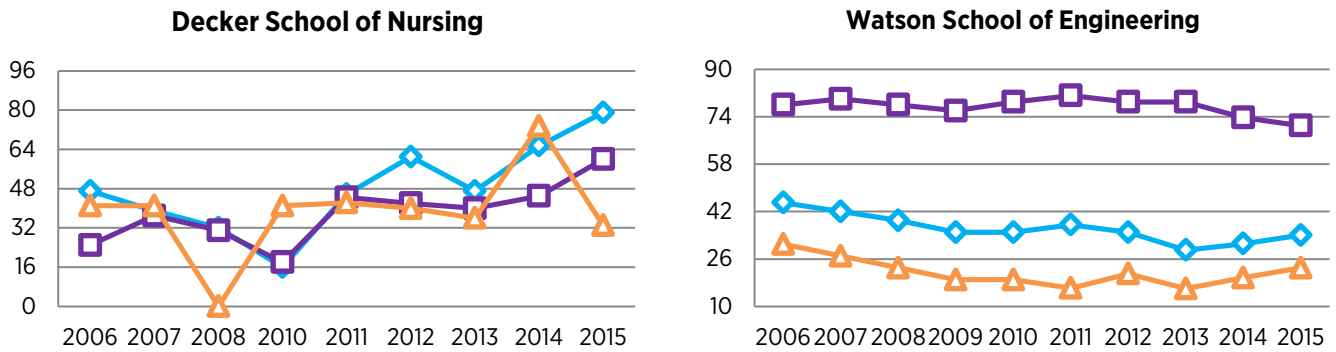
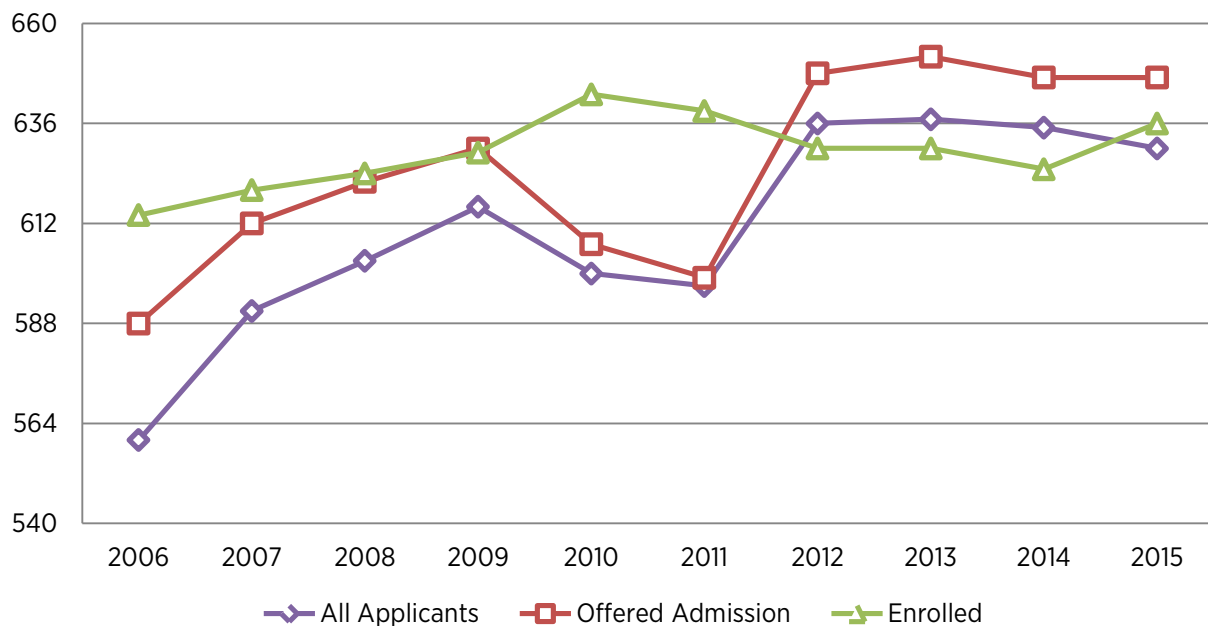


TABLE 2.3 AVERAGE TOTAL GMAT SCORES FOR FALL SEMESTERS, 2006-2015

Year		2006	2007	2008	2009	2010	2011	2012	2013	2014	2015
All Applicants	Total Score	560	591	603	616	600	597	636	637	635	630
	Percentile	57	66	67	70	64	62	72	72	72	70
Offered Admission	Total Score	588	612	622	630	607	599	648	652	647	647
	Percentile	66	71	73	74	63	63	77	78	76	74
Enrolled	Total Score	614	620	624	629	643	639	630	630	625	636
	Percentile	67	69	70	72	74	73	71	71	69	71

FIGURE 2.3

AVERAGE GMAT SCORES OF APPLICANTS, ADMITTEES, AND ENROLLEES FOR FALL SEMESTERS, 2006-2015



PART 3: GRADUATE STUDENT ENROLLMENT

TABLE 3.1 TOTAL GRADUATE ENROLLMENT BY GENDER FOR FALL SEMESTERS, 2006-2015

Year	2006	2007	2008	2009	2010	2011	2012	2013	2014	2015
Male	1,410	1,481	1,567	1,579	1,618	1,494	1,486	1,550	1,716	1,781
Female	1,440	1,439	1,533	1,477	1,520	1,454	1,488	1,529	1,571	1,650
Total Enrollees	2,850	2,920	3,100	3,056	3,138	2,948	2,974	3,079	3,287	3,431
<i>% Change</i>	<i>0%</i>	<i>2%</i>	<i>6%</i>	<i>-1%</i>	<i>3%</i>	<i>-6%</i>	<i>1%</i>	<i>4%</i>	<i>7%</i>	<i>4%</i>

TABLE 3.2

TOTAL GRADUATE ENROLLMENT BY ETHNICITY AND GENDER FOR FALL SEMESTERS, 2011-2015

Year	2011			2012			2013			2014			2015		
	Gender	M	F	Total	M	F	Total	M	F	Total	M	F	Total	M	F
International	541	341	882	550	365	915	658	432	1,090	824	513	1,337	899	562	1,461
Hispanic/Latino	53	63	116	61	64	125	61	66	127	60	66	126	74	64	138
Native American	7	5	12	9	6	15	9	10	19	4	10	14	9	9	18
Asian	43	43	86	65	62	127	63	66	129	84	76	160	68	73	141
Black/African American	37	49	86	46	54	100	43	63	106	43	66	109	54	71	125
Native Hawaiian/Pacific Islander	39	24	63	32	24	56	21	20	41	13	13	26	8	11	19
White	717	865	1,582	676	854	1,530	658	827	1,485	659	801	1,460	649	839	1,488
Unknown/Not Reported	57	64	121	47	59	106	37	45	82	29	26	55	20	21	41

FIGURE 3.1 TOTAL GRADUATE ENROLLMENT BY ETHNICITY, FALL 2015

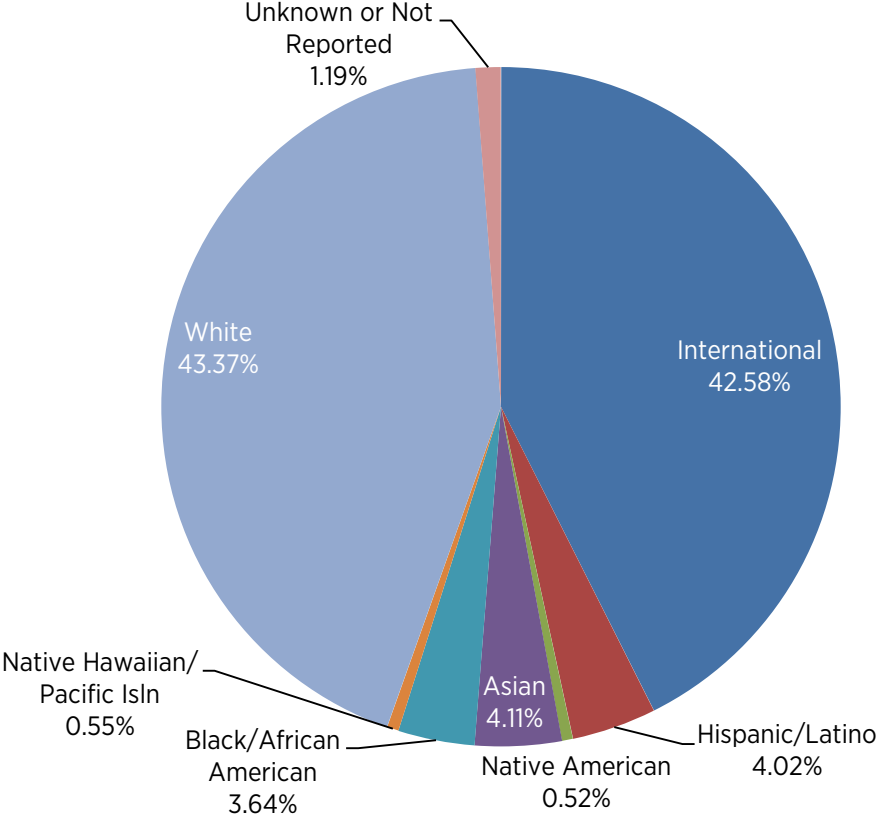


TABLE 3.3 GRADUATE ENROLLMENT BY SCHOOL FOR FALL SEMESTERS, 2006-2015

Year	2006	2007	2008	2009	2010	2011	2012	2013	2014	2015
HARPUR COLLEGE OF ARTS AND SCIENCES										
New Students	219	244	231	218	227	205	226	219	237	257
Continuing Students	931	921	945	948	910	887	879	862	845	859
Total	1,150	1,165	1,176	1,166	1,137	1,092	1,105	1,081	1,082	1,116
<i>% of Total Graduate Enrollment</i>	44%	43%	41%	40%	38%	39%	39%	36%	34%	33%
<i>% Change from Previous Year</i>	-0.4%	1.3%	0.9%	-0.9%	-2.5%	-4%	1.2%	-2.2%	0.1%	3.1%
WATSON SCHOOL OF ENGINEERING										
New Students	142	171	179	162	182	156	207	284	393	419
Continuing Students	480	514	530	560	555	517	440	507	583	663
Total	622	685	709	722	737	673	647	791	976	1,082
<i>% of Total Graduate Enrollment</i>	24%	25%	25%	25%	25%	24%	23%	27%	31%	32%
<i>% Change from Previous Year</i>	4.4%	10.1%	3.5%	1.8%	2.1%	-8.7%	-3.9%	22.3%	23.4%	10.9%
SCHOOL OF EDUCATION										
New Students	63	58	87	83	83	72	55	71	73	77
Continuing Students	186	198	207	232	222	219	190	155	150	158
Total	249	256	294	315	305	291	245	226	223	235
<i>% of Total Graduate Enrollment</i>	10%	9%	10%	11%	10%	10%	9%	8%	7%	7%
<i>% Change from Previous Year</i>	-49.5%	2.8%	14.8%	7.1%	-3.2%	-4.6%	-15.8%	-7.8%	-1.3%	5.4%
SCHOOL OF MANAGEMENT										
New Students	109	154	182	150	202	198	233	242	253	252
Continuing Students	120	98	140	167	126	90	114	111	148	136
Total	229	252	322	317	328	288	347	353	401	388
<i>% of Total Graduate Enrollment</i>	9%	9%	11%	11%	11%	10%	12%	12%	13%	12%
<i>% Change from Previous Year</i>	5%	10%	27.8%	-1.6%	3.5%	-12.2%	20.5%	1.7%	13.6%	-3.2%
DECKER SCHOOL OF NURSING										
New Students	28	31	29	42	45	55	63	59	46	51
Continuing Students	57	82	87	77	112	130	153	174	156	139
Total	85	113	116	119	157	185	216	233	202	190
<i>% of Total Graduate Enrollment</i>	3%	4%	4%	4%	5%	7%	8%	8%	6%	6%
<i>% Change from Previous Year</i>	14.9%	32.9%	2.7%	2.6%	31.9%	17.8%	16.8%	7.9%	-13.3%	-5.9%
COLLEGE OF COMMUNITY AND PUBLIC AFFAIRS										
New Students	85	93	93	80	93	78	89	113	107	135
Continuing Students	207	152	176	176	181	165	151	151	157	175
Total	292	245	269	256	274	243	240	264	264	310
<i>% of Total Graduate Enrollment</i>	11%	9%	9%	9%	9%	9%	8%	9%	8%	10%
<i>% Change from Previous Year</i>	284.2%	-16.1%	9.8%	-4.8%	7%	-11.3%	-1.2%	10%	0%	17.4%
GRADUATE SCHOOL										
New Students	NA	NA	NA	NA	4	5	11	4	14	11
Continuing Students	NA	NA	NA	NA	33	29	32	29	31	35
Total	NA	NA	NA	NA	37	34	43	33	45	46
<i>% of Total Graduate Enrollment</i>	NA	NA	NA	NA	NA	1%	2%	1%	1%	1%
<i>% Change from Previous Year</i>	NA	NA	NA	NA	NA	-8.1%	26.5%	-23.3%	36.4%	2.2%
Total Graduate Enrollment*	2,627	2,716	2,886	2,895	2,975	2,806	2,843	2,981	3,193	3,367
<i>% Change from Previous Year</i>	0.6%	3.4%	6.3%	0.3%	2.8%	-5.7%	1.3%	4.9%	7.1%	5.4%

*Degree-seeking

GRADUATE STUDENT ENROLLMENT BY PROGRAM

HARPUR COLLEGE OF ARTS & SCIENCES

TABLE 3.4

GRADUATE ENROLLMENT IN HARPUR COLLEGE OF ARTS & SCIENCES FOR FALL SEMESTERS, 2006-2015

Year	2006	2007	2008	2009	2010	2011	2012	2013	2014	2015
Anthropology										
New Students	22	24	16	19	16	24	27	27	35	19
Continuing Students	107	109	123	105	112	93	106	109	112	119
Total	129	133	139	124	128	117	133	136	147	138
<i>% Change from Previous Year</i>	<i>-4.4%</i>	<i>3.1%</i>	<i>4.5%</i>	<i>-10.8%</i>	<i>3.2%</i>	<i>-8.6%</i>	<i>13.7%</i>	<i>2.3%</i>	<i>8.1%</i>	<i>-6.1%</i>
Art History										
New Students	3	8	7	4	5	4	8	7	5	9
Continuing Students	30	28	33	32	28	33	30	28	25	28
Total	33	36	40	36	33	37	38	35	30	37
<i>% Change from Previous Year</i>	<i>-8.3%</i>	<i>9.1%</i>	<i>11.1%</i>	<i>-10%</i>	<i>-8.3%</i>	<i>12.1%</i>	<i>2.7%</i>	<i>-7.9%</i>	<i>-14.3%</i>	<i>23.3%</i>
Asian & Asian American Studies										
New Students	N/A	N/A	N/A	N/A	N/A	N/A	3	6	7	7
Continuing Students	N/A	N/A	N/A	N/A	N/A	N/A	0	3	7	6
Total	N/A	N/A	N/A	N/A	N/A	N/A	3	9	14	13
<i>% Change from Previous Year</i>	<i>N/A</i>	<i>N/A</i>	<i>N/A</i>	<i>N/A</i>	<i>N/A</i>	<i>N/A</i>	<i>N/A</i>	<i>200%</i>	<i>55.6%</i>	<i>-7.1%</i>
Biological Sciences										
New Students	8	24	16	26	15	14	17	19	15	27
Continuing Students	36	41	40	51	63	57	55	55	50	48
Total	44	65	56	77	78	71	72	74	65	75
<i>% Change from Previous Year</i>	<i>4.8%</i>	<i>47.7%</i>	<i>-13.8%</i>	<i>37.5%</i>	<i>1.3%</i>	<i>-9%</i>	<i>1.4%</i>	<i>2.8%</i>	<i>-12.2%</i>	<i>15.4%</i>
Chemistry										
New Students	12	13	16	6	9	9	9	10	13	16
Continuing Students	41	45	51	51	48	47	42	44	42	45
Total	53	58	67	57	57	56	51	54	55	61
<i>% Change from Previous Year</i>	<i>0%</i>	<i>9.4%</i>	<i>15.5%</i>	<i>-14.9%</i>	<i>0%</i>	<i>-1.8%</i>	<i>-8.9%</i>	<i>5.9%</i>	<i>1.9%</i>	<i>10.9%</i>
Comparative Literature										
New Students	10	9	11	8	8	10	7	11	6	6
Continuing Students	65	56	54	56	50	46	53	54	55	55
Total	75	65	65	64	58	56	60	65	61	61
<i>% Change from Previous Year</i>	<i>-3.8%</i>	<i>-13.3%</i>	<i>0%</i>	<i>-1.5%</i>	<i>-9.4%</i>	<i>-3.4%</i>	<i>7.1%</i>	<i>8.3%</i>	<i>-6.2%</i>	<i>0%</i>

TABLE 3.4 (CONTINUED)

GRADUATE ENROLLMENT IN HARPUR COLLEGE OF ARTS & SCIENCES FOR FALL SEMESTERS, 2006-2015

Year	2006	2007	2008	2009	2010	2011	2012	2013	2014	2015
Economics										
New Students	18	20	14	20	27	14	12	15	24	23
Continuing Students	52	49	56	52	52	57	44	38	41	45
Total	70	69	70	72	79	71	56	53	65	68
<i>% Change from Previous Year</i>	<i>11.1%</i>	<i>-1.4%</i>	<i>1.4%</i>	<i>2.9%</i>	<i>9.7%</i>	<i>-10.1%</i>	<i>-21.1%</i>	<i>-5.4%</i>	<i>22.6%</i>	<i>4.6%</i>
English										
New Students	25	24	15	22	15	16	25	20	19	15
Continuing Students	114	104	102	91	89	81	79	78	70	77
Total	139	128	117	113	104	97	104	98	89	92
<i>% Change from Previous Year</i>	<i>-2.1%</i>	<i>-7.9%</i>	<i>-8.6%</i>	<i>-3.4%</i>	<i>-8%</i>	<i>-6.7%</i>	<i>7.2%</i>	<i>-5.8%</i>	<i>-9.2%</i>	<i>3.4%</i>
Geography - MA										
New Students	12	10	9	8	16	8	9	13	12	19
Continuing Students	8	15	13	11	16	25	20	17	22	16
Total	20	25	22	19	32	33	29	30	34	35
<i>% Change from Previous Year</i>	<i>-20%</i>	<i>25%</i>	<i>-12%</i>	<i>-13.6%</i>	<i>68.4%</i>	<i>3.1%</i>	<i>-12.1%</i>	<i>3.4%</i>	<i>13.3%</i>	<i>2.9%</i>
Geological Sciences										
New Students	4	5	6	6	5	5	3	3	8	7
Continuing Students	33	30	29	30	28	25	28	23	18	21
Total	37	35	35	36	33	30	31	26	26	28
<i>% Change from Previous Year</i>	<i>-7.5%</i>	<i>-5.4%</i>	<i>0%</i>	<i>2.9%</i>	<i>-8.3%</i>	<i>-9.1%</i>	<i>3.3%</i>	<i>-16.1%</i>	<i>0%</i>	<i>7.7%</i>
History										
New Students	22	19	15	15	19	15	10	21	16	13
Continuing Students	79	90	95	82	77	82	72	62	62	59
Total	101	109	110	97	96	97	82	83	78	72
<i>% Change from Previous Year</i>	<i>3.1%</i>	<i>7.9%</i>	<i>0.9%</i>	<i>-11.8%</i>	<i>-1%</i>	<i>1%</i>	<i>-15.5%</i>	<i>1.2%</i>	<i>-6%</i>	<i>-7.7%</i>
Mathematics										
New Students	13	13	18	19	14	18	22	17	18	19
Continuing Students	46	44	39	49	51	54	53	52	54	51
Total	59	57	57	68	65	72	75	69	72	70
<i>% Change from Previous Year</i>	<i>13.5%</i>	<i>-3.4%</i>	<i>0%</i>	<i>19.3%</i>	<i>-4.4%</i>	<i>10.8%</i>	<i>4.2%</i>	<i>-8%</i>	<i>4.3%</i>	<i>-2.8%</i>
Material Sciences										
New Students	2	4	3	1	2	0	0	N/A	N/A	N/A
Continuing Students	12	15	18	22	1	1	1	N/A	N/A	N/A
Total	14	19	21	23	3	1	1	N/A	N/A	N/A
<i>% Change from Previous Year</i>	<i>0%</i>	<i>35.7%</i>	<i>10.5%</i>	<i>9.5%</i>	<i>-87%</i>	<i>-66.7%</i>	<i>0%</i>	<i>N/A</i>	<i>N/A</i>	<i>N/A</i>

TABLE 3.4 (CONTINUED)

GRADUATE ENROLLMENT IN HARPUR COLLEGE OF ARTS & SCIENCES FOR FALL SEMESTERS, 2006-2015

Year	2006	2007	2008	2009	2010	2011	2012	2013	2014	2015
Music Performance - MM										
New Students	5	13	15	7	7	8	8	6	10	8
Continuing Students	15	7	13	17	8	10	11	11	7	8
Total	20	20	28	24	15	18	19	17	17	16
<i>% Change from Previous Year</i>	<i>-39.4%</i>	<i>0%</i>	<i>40%</i>	<i>-14.3%</i>	<i>-37.5%</i>	<i>20%</i>	<i>5.6%</i>	<i>-10.5%</i>	<i>0%</i>	<i>-5.9%</i>
Philosophy - PIC										
New Students	4	4	9	4	5	3	0	0	0	0
Continuing Students	55	48	44	45	45	33	28	21	16	14
Philosophy - SPEL										
New Students	7	7	7	11	8	7	6	7	6	4
Continuing Students	19	23	26	27	31	30	28	28	30	33
Total	85	82	86	87	89	73	62	56	52	51
<i>% Change from Previous Year</i>	<i>3.7%</i>	<i>-3.5%</i>	<i>4.9%</i>	<i>1.2%</i>	<i>2.3%</i>	<i>-18%</i>	<i>-15.1%</i>	<i>-9.7%</i>	<i>-7.1%</i>	<i>-1.9%</i>
Physics										
New Students	2	2	4	3	6	6	9	7	6	9
Continuing Students	4	5	4	7	8	13	19	25	29	30
Total	6	7	8	10	14	19	28	32	35	39
<i>% Change from Previous Year</i>	<i>0%</i>	<i>16.7%</i>	<i>14.3%</i>	<i>25%</i>	<i>40%</i>	<i>35.7%</i>	<i>47.4%</i>	<i>14.3%</i>	<i>9.4%</i>	<i>11.4%</i>
Political Science										
New Students	15	11	10	10	10	10	18	10	5	10
Continuing Students	30	38	36	41	39	39	37	40	41	36
Total	45	49	46	51	49	49	55	50	46	46
<i>% Change from Previous Year</i>	<i>-4.3%</i>	<i>8.9%</i>	<i>-6.1%</i>	<i>10.9%</i>	<i>-3.9%</i>	<i>0%</i>	<i>12.2%</i>	<i>-9.1%</i>	<i>-8%</i>	<i>0%</i>
Psychology										
Behavioral Neuroscience										
New Students	4	6	6	4	8	6	9	2	5	5
Continuing Students	18	21	23	22	21	21	20	20	19	18
Cognitive										
New Students	3	4	5	2	5	5	4	3	3	4
Continuing Students	14	15	14	16	14	14	14	18	17	18
Clinical										
New Students	6	8	6	4	7	11	5	5	7	7
Continuing Students	38	35	38	34	31	34	39	37	37	34
Total	83	89	92	82	86	91	91	85	88	86
<i>% Change from Previous Year</i>	<i>-3.5%</i>	<i>7.2%</i>	<i>3.4%</i>	<i>-10.9%</i>	<i>4.9%</i>	<i>5.8%</i>	<i>0%</i>	<i>-6.6%</i>	<i>3.5%</i>	<i>-2.3%</i>

TABLE 3.4 (CONTINUED)

GRADUATE ENROLLMENT IN HARPUR COLLEGE OF ARTS & SCIENCES FOR FALL SEMESTERS, 2006-2015

Year	2006	2007	2008	2009	2010	2011	2012	2013	2014	2015
Sociology										
New Students	2	6	11	6	14	6	8	4	7	8
Continuing Students	79	79	66	66	59	61	66	69	63	63
Total	81	85	77	72	73	67	74	73	70	71
<i>% Change from Previous Year</i>	-5.8%	4.9%	-9.4%	-6.5%	1.4%	-8.2%	10.4%	-1.4%	-4.1%	1.4%
Romance Languages										
French - MA										
New Students	0	0	1	0	0	0	1	0	0	1
Continuing Students	2	2	0	1	1	0	0	1	2	1
Italian - MA										
New Students	0	0	0	1	0	0	0	0	2	1
Continuing Students	1	1	3	2	2	0	0	0	1	1
Spanish - MA										
New Students	2	3	3	0	2	0	0	0	0	0
Continuing Students	6	2	3	3	4	4	1	1	1	0
Total	11	8	10	7	9	4	2	2	6	4
<i>% Change from Previous Year</i>	-8.3%	-27.3%	25%	-30%	28.6%	-55.6%	-50%	0%	200%	-33.3%
Theater - MA										
New Students	2	2	3	3	3	4	3	2	2	3
Continuing Students	4	4	6	4	7	5	9	5	2	4
Total	6	7	8	7	10	9	12	7	4	7
<i>% Change from Previous Year</i>	-25%	16.7%	14.3%	-12.5%	42.9%	-10%	33.3%	-41.7%	-42.9%	75%
Translation Studies - PhD										
New Students	0	1	5	2	1	2	3	4	7	15
Continuing Students	5	10	16	22	25	22	24	23	21	29
Total	5	11	21	24	26	24	27	27	28	44
<i>% Change from Previous Year</i>	-44.4%	120%	90.9%	14.3%	8.3%	-7.7%	12.5%	0%	3.7%	57.1%

WATSON SCHOOL OF ENGINEERING

TABLE 3.5

GRADUATE ENROLLMENT IN WATSON SCHOOL OF ENGINEERING FOR FALL SEMESTERS, 2006-2015

Year	2006	2007	2008	2009	2010	2011	2012	2013	2014	2015
Computer Sciences										
MS										
New Students	0	0	71	61	75	43	71	105	129	167
Continuing Students	64	22	156	164	161	146	104	138	173	163
MS/PhD										
New Students	76	77	5	3	1	4	7	7	5	7
Continuing Students	118	173	45	48	53	54	53	47	50	52
Total	258	272	277	276	290	247	235	297	357	389
<i>% Change from Previous Year</i>	<i>9.8%</i>	<i>5.4%</i>	<i>1.8%</i>	<i>-0.4%</i>	<i>5.1%</i>	<i>-14.8%</i>	<i>-4.9%</i>	<i>26.4%</i>	<i>20.2%</i>	<i>9%</i>
Electrical Engineering										
MS										
New Students	0	2	21	17	30	24	37	61	67	61
Continuing Students	30	16	62	80	72	48	39	51	78	57
MEng										
New Students	6	13	9	3	4	3	6	5	2	2
Continuing Students	15	23	31	20	10	10	8	5	2	5
MS/PhD										
New Students	19	19	9	2	4	5	10	12	11	11
Continuing Students	60	77	34	44	45	46	46	47	54	63
MEng (Computer Engineering)										
New Students	0	3	3	3	2	4	1	3	0	0
Continuing Students	9	6	4	3	1	2	4	2	2	0
Total	139	159	173	172	168	142	151	186	216	199
<i>% Change from Previous Year</i>	<i>-3.5%</i>	<i>14.4%</i>	<i>8.8%</i>	<i>-0.6%</i>	<i>-2.3%</i>	<i>-15.5%</i>	<i>6.3%</i>	<i>23.2%</i>	<i>16.1%</i>	<i>-7.9%</i>
Mechanical Engineering										
MS										
New Students	0	0	6	0	20	26	12	19	29	18
Continuing Students	7	5	28	25	25	31	20	12	24	29
MEng										
New Students	0	0	0	0	1	1	0	1	2	1
Continuing Students	3	0	0	1	3	2	1	1	1	1
MS/PhD										
New Students	12	13	7	7	6	3	6	5	7	7
Continuing Students	42	51	27	27	34	35	30	34	35	41
Total	64	69	68	60	89	98	69	72	98	97
<i>% Change from Previous Year</i>	<i>-1.5%</i>	<i>7.8%</i>	<i>-1.4%</i>	<i>-11.8%</i>	<i>48.3%</i>	<i>10.1%</i>	<i>-29.6%</i>	<i>4.3%</i>	<i>36.1%</i>	<i>-1%</i>

TABLE 3.5 (CONTINUED)

GRADUATE ENROLLMENT IN WATSON SCHOOL OF ENGINEERING FOR FALL SEMESTERS, 2006-2015

Year	2006	2007	2008	2009	2010	2011	2012	2013	2014	2015
Industrial Engineering/Systems Science										
MS										
New Students	17	31	32	24	21	26	36	27	68	57
Continuing Students	46	52	57	67	56	40	42	51	54	103
MEng										
New Students	1	0	1	0	0	0	1	2	2	6
Continuing Students	0	1	0	1	2	2	0	2	1	1
MS (Exec. Health Sys. Manhattan-ISE)										
New Students	N/A	N/A	N/A	N/A	N/A	N/A	N/A	1	13	12
Continuing Students	N/A	N/A	N/A	N/A	N/A	N/A	N/A	16	1	0
MS (Health Systems-ISE)										
New Students	N/A	N/A	N/A	N/A	N/A	N/A	N/A	3	4	12
Continuing Students	N/A	N/A	N/A	N/A	N/A	N/A	N/A	5	5	11
MS (Systems Science)										
New Students	0	0	3	6	4	1	4	4	2	0
Continuing Students	8	4	9	10	17	14	9	8	8	8
MEng (Systems Engineering)										
New Students	N/A	N/A	N/A	N/A	N/A	0	0	1	1	0
Continuing Students	N/A	N/A	N/A	N/A	N/A	2	3	0	1	1
MS (Health Systems-SS)										
New Students	N/A	N/A	N/A	N/A	N/A	N/A	N/A	N/A	1	0
Continuing Students	N/A	N/A	N/A	N/A	N/A	N/A	N/A	N/A	0	5
MS (Exec. Health Sys. Manhattan-SS)										
New Students	N/A	N/A	N/A	N/A	N/A	N/A	N/A	0	14	18
Continuing Students	N/A	N/A	N/A	N/A	N/A	N/A	N/A	14	2	0
MS/PhD (Indust.Sys. Eng)										
New Students	0	0	4	9	6	8	9	14	10	16
Continuing Students	0	0	32	34	42	42	40	38	47	56
MS/PhD (Systems Science)										
New Students	6	9	4	2	3	1	2	1	4	3
Continuing Students	70	71	21	19	16	21	21	17	18	28
Total	148	168	163	172	167	157	167	204	256	337
<i>% Change from Previous Year</i>	<i>5%</i>	<i>13.5%</i>	<i>-3%</i>	<i>5.5%</i>	<i>-2.9%</i>	<i>-6%</i>	<i>6.4%</i>	<i>22.2%</i>	<i>25.5%</i>	<i>31.6%</i>

TABLE 3.5 (CONTINUED)

GRADUATE ENROLLMENT IN WATSON SCHOOL OF ENGINEERING FOR FALL SEMESTERS, 2006-2015

Year	2006	2007	2008	2009	2010	2011	2012	2013	2014	2015
Materials Engineering - MS/PHD										
New Students	5	4	2	9	1	0	N/A	N/A	N/A	N/A
Continuing Students	8	13	16	14	6	7	N/A	N/A	N/A	N/A
Total	13	17	18	23	7	7	N/A	N/A	N/A	N/A
<i>% Change from Previous Year</i>	-7.1%	30.8%	5.9%	27.8%	-69.6%	0%	N/A	N/A	N/A	N/A
Biomedical Engineering										
MS										
New Students	N/A	N/A	0	5	3	7	4	11	17	18
Continuing Students	N/A	N/A	1	0	7	9	12	5	11	18
PhD										
New Students	N/A	N/A	2	1	1	0	1	2	5	3
Continuing Students	N/A	N/A	6	4	5	6	8	14	16	21
Total	N/A	N/A	9	10	16	22	25	32	49	60
<i>% Change from Previous Year</i>	N/A	N/A	N/A	11.1%	60%	37.5%	13.6%	28%	53.1%	22.4%

GRADUATE SCHOOL OF EDUCATION**TABLE 3.6**

GRADUATE ENROLLMENT IN GRADUATE SCHOOL OF EDUCATION FOR FALL SEMESTERS, 2006-2015

Year	2006	2007	2008	2009	2010	2011	2012	2013	2014	2015
MA in Teaching										
Biology Adolescence										
New Students	3	5	7	3	6	1	2	2	1	3
Continuing Students	3	5	11	9	5	4	1	4	6	1
Chemistry Adolescence										
New Students	2	0	1	3	1	1	2	1	2	1
Continuing Students	2	3	0	1	1	1	1	2	1	4
Earth Science Adolescence										
New Students	1	0	0	1	5	1	0	0	0	1
Continuing Students	4	1	1	1	1	5	1	0	0	0
English Adolescence										
New Students	9	12	15	15	11	11	6	5	6	12
Continuing Students	12	13	17	18	17	12	10	9	8	7
French Adolescence										
New Students	N/A	N/A	N/A	N/A	N/A	N/A	1	2	0	1
Continuing Students	N/A	N/A	N/A	N/A	N/A	N/A	0	2	4	1

TABLE 3.6 (CONTINUED)

GRADUATE ENROLLMENT IN GRADUATE SCHOOL OF EDUCATION FOR FALL SEMESTERS, 2006-2015

Year	2006	2007	2008	2009	2010	2011	2012	2013	2014	2015
MA in Teaching										
Mathematics Adolescence										
New Students	6	3	9	7	6	5	3	1	7	0
Continuing Students	11	12	10	14	10	4	8	4	2	5
Physics Adolescence										
New Students	N/A	N/A	0	1	N/A	1	1	1	1	1
Continuing Students	N/A	N/A	3	4	2	1	0	0	0	1
Social Studies Adolescence										
New Students	8	10	10	9	5	10	5	3	7	7
Continuing Students	11	16	19	19	19	10	11	7	7	7
Spanish Adolescence										
New Students	N/A	N/A	N/A	N/A	N/A	N/A	2	2	2	0
Continuing Students	N/A	N/A	N/A	N/A	N/A	N/A	0	3	3	2
Educational Leadership Cert.										
New Students	N/A	N/A	N/A	0	3	1	2	5	7	5
Continuing Students	N/A	N/A	N/A	15	10	16	16	16	9	17
Total	72	80	103	120	102	84	72	69	73	76
<i>% Change from Previous Year</i>	38.5%	11.1%	28.8%	16.5%	-15%	-17.6%	-14.3%	-4.2%	5.8%	4.1%
MS in Education										
Biology Adolescence (MSEd)										
New Students	N/A	N/A	0	N/A	1	0	0	0	0	0
Continuing Students	N/A	N/A	1	N/A	0	1	1	0	0	0
Chemistry Adolescence (MSEd)										
New Students	N/A	N/A	N/A	N/A	N/A	0	0	0	0	0
Continuing Students	N/A	N/A	N/A	N/A	N/A	1	1	0	0	0
Earth Science Adolescence (MSEd)										
New Students	N/A	N/A	N/A	N/A	1	0	0	0	0	0
Continuing Students	N/A	N/A	N/A	N/A	0	1	0	0	0	0
English Adolescence Ed. (MSEd)										
New Students	N/A	N/A	1	2	1	0	0	0	0	0
Continuing Students	N/A	N/A	0	1	2	1	0	0	0	0
French Adolescence Ed. (MSEd)										
New Students	N/A	N/A	N/A	N/A	N/A	N/A	N/A	1	0	0
Continuing Students	N/A	N/A	N/A	N/A	N/A	N/A	N/A	0	0	0
Mathematics Adolescence (MSEd)										
New Students	1	1	1	1	2	1	1	0	1	0
Continuing Students	2	1	3	4	6	4	3	2	1	1
Social Studies Adolescence (MSEd)										
New Students	0	0	0	0	0	0	1	1	1	0
Continuing Students	2	2	1	1	0	0	0	1	1	1

TABLE 3.6 (CONTINUED)

GRADUATE ENROLLMENT IN GRADUATE SCHOOL OF EDUCATION FOR FALL SEMESTERS, 2006-2015

Year	2006	2007	2008	2009	2010	2011	2012	2013	2014	2015
MS in Education										
Spanish Adolescence (MSEd)										
New Students	N/A	N/A	N/A	N/A	N/A	N/A	N/A	N/A	N/A	1
Continuing Students	N/A	N/A	N/A	N/A	N/A	N/A	N/A	N/A	N/A	1
Social Studies 7-12 (MSEd)										
New Students	0	N/A	N/A	N/A	N/A	N/A	N/A	N/A	N/A	N/A
Continuing Students	2	N/A	N/A	N/A	N/A	N/A	N/A	N/A	N/A	N/A
Literacy Birth-6 (MSEd)										
New Students	10	4	7	9	10	12	4	11	6	7
Continuing Students	24	30	24	27	19	28	24	15	18	19
Literacy 5-12 (MSEd)										
New Students	1	4	6	3	3	4	4	5	1	3
Continuing Students	8	7	8	6	10	9	6	5	5	1
Early Childhood Literacy Education										
New Students	N/A	N/A	N/A	N/A	N/A	2	2	5	6	3
Continuing Students	N/A	N/A	N/A	N/A	N/A	11	5	3	4	7
Early Childhood Special Education										
New Students	N/A	N/A	N/A	N/A	3	6	4	7	7	8
Continuing Students	N/A	N/A	N/A	N/A	4	17	9	3	8	9
Childhood Ed. (Pre-Service MSEd)										
New Students	6	3	6	6	7	N/A	N/A	N/A	N/A	N/A
Continuing Students	9	9	6	7	10	N/A	N/A	N/A	N/A	N/A
Childhood Ed. (In-Service MSEd)										
New Students	1	0	0	0	N/A	N/A	N/A	N/A	N/A	N/A
Continuing Students	2	0	0	1	N/A	N/A	N/A	N/A	N/A	N/A
Inclusive Childhood 1-6 (MSEd)										
New Students	4	3	9	10	9	N/A	N/A	N/A	N/A	N/A
Continuing Students	10	10	9	19	28	N/A	N/A	N/A	N/A	N/A
Special Education Birth-2 (MSEd)										
New Students	N/A	N/A	N/A	N/A	N/A	1	0	0	0	2
Continuing Students	N/A	N/A	N/A	N/A	N/A	1	1	0	1	1
Special Education Birth-6 (MSEd)										
New Students	N/A	N/A	N/A	N/A	N/A	1	2	2	5	2
Continuing Students	N/A	N/A	N/A	N/A	N/A	3	3	6	6	10
Special Ed. Childhood (MSEd)										
New Students	2	3	3	6	2	1	2	6	2	4
Continuing Students	22	18	18	14	13	12	7	5	8	8
Special Education Adolescence										
New Students	3	1	6	4	4	3	2	4	3	4
Continuing Students	14	12	13	14	14	15	17	7	7	7

TABLE 3.6 (CONTINUED)

GRADUATE ENROLLMENT IN GRADUATE SCHOOL OF EDUCATION FOR FALL SEMESTERS, 2006-2015

Year	2006	2007	2008	2009	2010	2011	2012	2013	2014	2015
MS in Education										
Educational Studies (MSEd)										
New Students	2	0	1	0	0	0	0	0	0	5
Continuing Students	7	6	3	9	5	8	7	5	3	3
Ed. Studies New Orleans (MSEd)										
New Students	N/A	N/A	N/A	N/A	N/A	8	4	2	2	0
Continuing Students	N/A	N/A	N/A	N/A	N/A	0	8	5	5	2
Total	132	114	126	144	154	151	118	101	101	109
<i>% Change from Previous Year</i>	-3.6%	-13.6%	10.5%	14.3%	6.9%	-1.9%	-21.9%	-14.4%	0%	7.9%
Education Doctoral (EdD)										
New Students	4	2	3	5	3	2	5	5	6	7
Continuing Students	43	43	42	46	46	54	50	51	43	43
Total	47	45	45	51	49	56	55	56	49	50
<i>% Change from Previous Year</i>	-6%	-4.3%	0%	13.3%	-3.9%	14.3%	-1.8%	1.8%	-12.5%	2%

SCHOOL OF MANAGEMENT**TABLE 3.7** GRADUATE ENROLLMENT IN SCHOOL OF MANAGEMENT FOR FALL SEMESTERS, 2006-2015

Year	2006	2007	2008	2009	2010	2011	2012	2013	2014	2015
Accounting										
Accounting (MS)										
New Students	18	40	63	57	135	108	156	144	170	168
Continuing Students	17	37	46	70	55	49	42	62	77	86
Accounting 3-2 Oneonta (MS)										
New Students	0	N/A	N/A	N/A	N/A	N/A	1	0	0	0
Continuing Students	0	N/A	N/A	N/A	N/A	N/A	0	0	0	0
Total	35	77	109	127	190	157	199	206	247	254
<i>% Change from Previous Year</i>	9.4%	120%	41.6%	16.5%	49.6%	-17.4%	26.8%	3.5%	19.9%	2.8%
Watson BS/MBA										
New Students	12	9	9	8	8	7	4	4	8	10
Continuing Students	0	0	1	1	1	1	0	0	1	0
Total	12	9	10	9	9	8	4	4	9	10
<i>% Change from Previous Year</i>	9.1%	-25%	11.1%	-10%	0.0%	-11.1%	-50%	0%	125%	11.1%
Management-PhD										
New Students	7	0	5	8	2	6	4	5	4	6
Continuing Students	13	18	14	16	19	17	20	23	19	15
Total	20	18	19	24	21	23	24	28	23	21
<i>% Change from Previous Year</i>	25%	-10%	5.6%	26.3%	-12.5%	9.5%	4.3%	16.7%	-17.9%	-8.7%
Master of Business Administration										
Business Administration										
New Students	37	51	47	21	17	12	17	27	27	14
Continuing Students	41	41	53	53	34	20	17	25	31	26

TABLE 3.7 (CONTINUED) GRADUATE ENROLLMENT IN SCHOOL OF MANAGEMENT FOR FALL SEMESTERS, 2006-2015

Year	2006	2007	2008	2009	2010	2011	2012	2013	2014	2015
Master of Business Administration										
Fast Track										
New Students	11	13	12	12	8	10	20	19	13	19
Continuing Students	0	0	2	3	0	0	0	1	2	7
Accelerated - Binghamton										
New Students	7	6	6	10	5	3	1	3	4	3
Continuing Students	0	0	0	1	1	1	0	0	0	1
Fast-Track Professional - Manhattan										
New Students	N/A	21	25	22	27	17	30	23	27	32
Continuing Students	N/A	0	2	1	1	0	1	0	1	1
Executive - Health Care										
New Students	0	3	0	5	0	1	0	0	0	0
Continuing Students	4	0	3	0	6	0	0	0	0	0
Executive - Manhattan										
New Students	N/A	N/A	N/A	N/A	N/A	20	0	17	0	0
Continuing Students	N/A	N/A	N/A	N/A	N/A	0	19	0	17	0
Executive - Corporate										
New Students	0	11	15	7	0	14	0	0	0	0
Continuing Students	28	2	19	22	9	2	15	0	0	0
Total	128	148	184	157	108	100	120	115	122	103
<i>% Change from Previous Year</i>	<i>-19.5%</i>	<i>15.6%</i>	<i>24.3%</i>	<i>-14.7%</i>	<i>-31.2%</i>	<i>-7.4%</i>	<i>20%</i>	<i>-4.2%</i>	<i>6.1%</i>	<i>-15.6%</i>

DECKER SCHOOL OF NURSING**TABLE 3.8**

GRADUATE ENROLLMENT IN DECKER SCHOOL OF NURSING FOR FALL SEMESTERS, 2006-2015

Year	2006	2007	2008	2009	2010	2011	2012	2013	2014	2015
Nursing (MS)										
New Students	11	6	11	19	18	11	0	0	1	0
Continuing Students	19	15	19	21	29	34	11	0	0	0
Family Nursing (MS)										
New Students	7	12	13	13	15	31	15	0	0	0
Continuing Students	6	25	25	21	28	40	16	8	1	0
Family Nursing NP (MS)										
New Students	N/A	N/A	N/A	N/A	N/A	N/A	36	42	28	24
Continuing Students	N/A	N/A	N/A	N/A	N/A	N/A	60	89	76	58
Family Nurse Practitioner (Cert.)										
New Students	3	3	1	3	7	2	1	1	0	3
Continuing Students	1	4	5	3	15	6	4	4	3	2

TABLE 3.8 (CONTINUED)

GRADUATE ENROLLMENT IN DECKER SCHOOL OF NURSING FOR FALL SEMESTERS, 2006-2015

Year	2006	2007	2008	2009	2010	2011	2012	2013	2014	2015
Gerontology Nursing (MS)										
New Students	1	2	1	1	2	0	0	0	0	3
Continuing Students	3	2	3	2	3	3	1	1	1	1
Gerontology Nurse Practitioner (MS)										
New Students	0	1	0	0	0	0	0	4	3	2
Continuing Students	1	0	1	0	0	0	0	0	3	6
Gerontology Nurse Practitioner (Cert.)										
New Students	N/A	N/A	N/A	N/A	N/A	N/A	N/A	N/A	0	1
Continuing Students	N/A	N/A	N/A	N/A	N/A	N/A	N/A	N/A	1	1
Community Health (MS)										
New Students	3	3	0	1	0	4	2	0	0	0
Continuing Students	3	8	4	3	2	4	7	7	5	4
Community Health NP (MS)										
New Students	N/A	N/A	N/A	N/A	N/A	N/A	1	1	3	1
Continuing Students	N/A	N/A	N/A	N/A	N/A	N/A	4	5	3	4
Community Health/Primary Care NP (Cert.)										
New Students	0	1	0	0	0	0	0	0	1	0
Continuing Students	2	2	2	3	4	2	1	0	0	1
Psych Nursing (MS)										
New Students	N/A	N/A	N/A	N/A	N/A	N/A	N/A	N/A	N/A	0
Continuing Students	N/A	N/A	N/A	N/A	N/A	N/A	N/A	N/A	N/A	1
Psych Mental Health Nursing NP (MS)										
New Students	N/A	N/A	N/A	N/A	0	4	3	4	6	7
Continuing Students	N/A	N/A	N/A	N/A	4	0	7	7	8	14
Psych Mental Health Nursing NP (Cert.)										
New Students	N/A	N/A	N/A	N/A	1	1	1	1	1	7
Continuing Students	N/A	N/A	N/A	N/A	3	2	4	7	6	3
Nursing Education (Cert.)										
New Students	N/A	N/A	N/A	N/A	0	0	0	0	0	0
Continuing Students	N/A	N/A	N/A	N/A	1	0	0	0	1	1
Forensic Health (Cert.)										
New Students	N/A	N/A	N/A	N/A	N/A	N/A	N/A	0	0	0
Continuing Students	N/A	N/A	N/A	N/A	N/A	N/A	N/A	1	0	0
Total	60	84	85	90	132	144	174	182	151	144
<i>% Change from Previous Year</i>	<i>17.6%</i>	<i>40%</i>	<i>1.2%</i>	<i>5.9%</i>	<i>46.7%</i>	<i>9.1%</i>	<i>20.8%</i>	<i>4.6%</i>	<i>-17%</i>	<i>-4.6%</i>

TABLE 3.8 (CONTINUED)

GRADUATE ENROLLMENT IN DECKER SCHOOL OF NURSING FOR FALL SEMESTERS, 2006-2015

Year	2006	2007	2008	2009	2010	2011	2012	2013	2014	2015
Doctor of Nursing Practice										
Community Health NP										
New Students	N/A	N/A	N/A	N/A	N/A	0	0	1	0	1
Continuing Students	N/A	N/A	N/A	N/A	N/A	1	1	0	3	3
Community Health Clinical Nursing Specialist										
New Students	N/A	N/A	N/A	N/A	N/A	0	0	1	0	0
Continuing Students	N/A	N/A	N/A	N/A	N/A	1	1	0	0	0
Family NP										
New Students	N/A	N/A	N/A	N/A	N/A	1	1	0	0	0
Continuing Students	N/A	N/A	N/A	N/A	N/A	7	4	10	11	9
Family Psych Mental Health NP										
New Students	N/A	N/A	N/A	N/A	N/A	N/A	0	0	0	1
Continuing Students	N/A	N/A	N/A	N/A	N/A	N/A	2	3	1	2
Gerontological NP										
New Students	N/A	N/A	N/A	N/A	N/A	0	1	0	0	0
Continuing Students	N/A	N/A	N/A	N/A	N/A	1	1	2	0	0
Gerontological Clinical Nursing Specialist										
New Students	N/A	N/A	N/A	N/A	N/A	N/A	0	0	0	0
Continuing Students	N/A	N/A	N/A	N/A	N/A	N/A	1	1	1	0
Total	0	0	0	0	0	11	12	18	16	16
<i>% Change from Previous Year</i>	<i>N/A</i>	<i>N/A</i>	<i>N/A</i>	<i>N/A</i>	<i>N/A</i>	<i>N/A</i>	<i>9.1%</i>	<i>50%</i>	<i>-11.1%</i>	<i>0%</i>
Nursing (PhD)										
New Students	3	3	3	5	2	1	2	4	3	1
Continuing Students	22	26	28	23	25	30	29	29	32	29
Total	25	29	31	28	27	31	31	33	35	30
<i>% Change from Previous Year</i>	<i>8.7%</i>	<i>16%</i>	<i>6.9%</i>	<i>-9.7%</i>	<i>-3.6%</i>	<i>14.8%</i>	<i>0%</i>	<i>6.5%</i>	<i>6.1%</i>	<i>-14.3%</i>

COLLEGE OF COMMUNITY AND PUBLIC AFFAIRS**TABLE 3.9**

GRADUATE ENROLLMENT IN COLLEGE OF COMMUNITY AND PUBLIC AFFAIRS FOR FALL SEMESTERS, 2006-2015

Year	2006	2007	2008	2009	2010	2011	2012	2013	2014	2015
Public Administration (MPA)										
New Students	21	21	26	24	24	22	16	27	19	37
Continuing Students	58	54	55	60	62	48	46	35	39	50
Total	79	75	81	84	86	70	62	62	58	87
<i>% Change from Previous Year</i>	<i>3.9%</i>	<i>-5.1%</i>	<i>8%</i>	<i>3.7%</i>	<i>2.4%</i>	<i>-18.6%</i>	<i>-11.4%</i>	<i>0%</i>	<i>-6.5%</i>	<i>50%</i>

TABLE 3.9 (CONTINUED)

GRADUATE ENROLLMENT IN COLLEGE OF COMMUNITY AND PUBLIC AFFAIRS FOR FALL SEMESTERS, 2006-2015

Year	2006	2007	2008	2009	2010	2011	2012	2013	2014	2015
Community and Public Affairs (PhD)										
New Students	N/A	N/A	N/A	N/A	N/A	N/A	N/A	5	8	3
Continuing Students	N/A	N/A	N/A	N/A	N/A	N/A	N/A	5	16	24
Total	N/A	N/A	N/A	N/A	N/A	N/A	N/A	10	24	27
<i>% Change from Previous Year</i>	<i>N/A</i>	<i>N/A</i>	<i>N/A</i>	<i>N/A</i>	<i>N/A</i>	<i>N/A</i>	<i>N/A</i>	<i>N/A</i>	<i>140%</i>	<i>12.5%</i>
Social Science (MA)										
New Students	24	17	11	0	0	0	N/A	N/A	N/A	N/A
Continuing Students	59	28	35	5	1	0	N/A	N/A	N/A	N/A
Total	83	45	46	5	1	0	N/A	N/A	N/A	N/A
<i>% Change from Previous Year</i>	<i>-15.3%</i>	<i>-45.8%</i>	<i>2.2%</i>	<i>-89.1%</i>	<i>-80%</i>	<i>-100%</i>	<i>N/A</i>	<i>N/A</i>	<i>N/A</i>	<i>N/A</i>
Social Work (MSW)										
New Students	40	55	56	51	49	47	57	64	61	83
Continuing Students	90	70	86	82	94	88	80	79	81	76
Total	130	125	142	133	143	135	137	143	142	159
<i>% Change from Previous Year</i>	<i>2.4%</i>	<i>-3.8%</i>	<i>13.6%</i>	<i>-6.3%</i>	<i>7.5%</i>	<i>-5.6%</i>	<i>1.5%</i>	<i>4.4%</i>	<i>-0.7%</i>	<i>12%</i>
Student Affairs Administration (MS)										
New Students	N/A	N/A	N/A	6	20	9	17	17	19	12
Continuing Students	N/A	N/A	N/A	28	24	29	24	32	21	25
Total	N/A	N/A	N/A	34	44	38	41	49	40	37
<i>% Change from Previous Year</i>	<i>N/A</i>	<i>N/A</i>	<i>N/A</i>	<i>N/A</i>	<i>29.4%</i>	<i>-13.6%</i>	<i>7.9%</i>	<i>19.5%</i>	<i>-18.4%</i>	<i>-7.5%</i>

GRADUATE SCHOOL - MATERIALS SCIENCE AND ENGINEERING**TABLE 3.10**

GRADUATE ENROLLMENT IN MATERIALS SCIENCE AND ENGINEERING FOR FALL SEMESTERS, 2006-2015

Year	2006	2007	2008	2009	2010	2011	2012	2013	2014	2015
Materials Science and Eng. (MS)										
New Students	N/A	N/A	N/A	N/A	N/A	1	2	1	8	6
Continuing Students	N/A	N/A	N/A	N/A	N/A	1	3	1	2	9
Materials Science and Eng. (PhD)										
New Students	N/A	N/A	N/A	N/A	4	4	9	3	6	5
Continuing Students	N/A	N/A	N/A	N/A	33	28	29	28	29	26
Total	N/A	N/A	N/A	N/A	37	34	43	33	45	46
<i>% Change from Previous Year</i>	<i>N/A</i>	<i>N/A</i>	<i>N/A</i>	<i>N/A</i>	<i>N/A</i>	<i>-8.1%</i>	<i>26.5%</i>	<i>-23.3%</i>	<i>36.4%</i>	<i>2.2%</i>

INTERNATIONAL GRADUATE STUDENTS

TABLE 3.11 INTERNATIONAL GRADUATE ENROLLMENT FOR FALL SEMESTERS, 2006-2015

Year	2006	2007	2008	2009	2010	2011	2012	2013	2014	2015
Total University Enrollment	2850	2920	3,100	3,056	3,138	2,948	2,974	3,079	3,287	3,431
Total Full-Time Enrollment	1636	1703	1,786	1,831	1,869	1,570	1,527	1,784	1,924	2,036
International Enrollment	804	929	1048	986	944	882	915	1,090	1,337	1,461
<i>% Change from Previous Year</i>	3.6%	15.5%	12.8%	-5.9%	-4.3%	-6.6%	3.7%	19.1%	22.7%	9.3%
<i>% of Total University</i>	28%	32%	34%	32%	30%	30%	31%	35%	41%	43%
International Full-Time Enrollment	614	705	757	707	643	508	535	698	901	1,032
<i>% of Total Full-Time</i>	38%	41%	42%	39%	34%	32%	35%	39%	47%	51%

FIGURE 3.2 GRADUATE ENROLLMENT FOR FALL SEMESTERS, 2006-2015

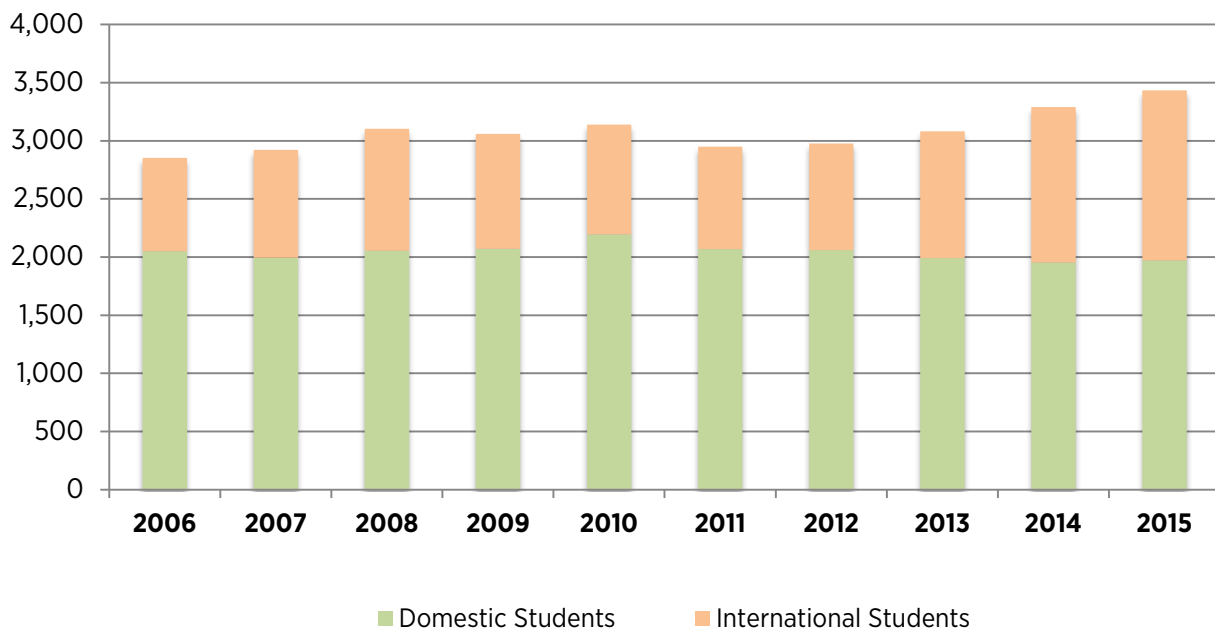


TABLE 3.12 INTERNATIONAL GRADUATE ENROLLMENT BY SCHOOL FOR FALL SEMESTERS, 2006-2015

Year	2006	2007	2008	2009	2010	2011	2012	2013	2014	2015
Harpur College of Arts & Sciences										
Total	317	329	346	343	325	338	337	341	372	402
<i>% of International Students</i>	39.4%	35.4%	33%	34.8%	34.4%	38.3%	36.8%	31.3%	27.8%	27.5%
Watson School of Engineering										
Total	377	445	485	474	454	395	401	513	696	800
<i>% of International Students</i>	47%	48%	46%	48%	48%	45%	44%	47%	52%	55%
School of Management										
Total	81	128	161	145	115	84	99	157	188	183
<i>% of International Students</i>	10%	14%	15%	15%	12%	10%	11%	14%	14%	13%
School of Education										
Total	5	4	5	6	4	7	8	7	8	6
<i>% of International Students</i>	0.6%	0.4%	0.5%	0.6%	0.4%	0.8%	0.9%	0.6%	0.6%	0.4%
Decker School of Nursing										
Total	7	9	9	5	2	7	11	15	14	10
<i>% of International Students</i>	0.8%	1%	0.9%	0.5%	0.2%	0.8%	1.2%	1.4%	1%	0.7%
College of Community and Public Affairs										
Total	6	4	7	8	11	19	18	15	12	16
<i>% of International Students</i>	0.7%	0.4%	0.7%	0.8%	1.2%	2.2%	2%	1.4%	0.9%	1.1%
Graduate School										
Total	N/A	N/A	N/A	N/A	26	26	31	25	36	38
<i>% of International Students</i>	N/A	N/A	N/A	N/A	2.8%	2.9%	3.4%	2.3%	2.7%	2.6%
Non-Degree										
Total International Enrollment	9	10	35	5	7	6	10	17	11	6
<i>% of International Students</i>	1.1%	1.1%	3.3%	0.5%	0.7%	0.7%	1.1%	1.6%	0.8%	0.4%

NOTES
