



2
0
1
6

Fall Graduate Admission & Enrollment Report

BINGHAMTON
UNIVERSITY

THE GRADUATE SCHOOL

This page intentionally left blank.

TABLE OF CONTENTS

PART 1: APPLICATIONS AND ADMISSIONS	1
PART 2: TEST SCORES	9
PART 3: GRADUATE STUDENT ENROLLMENT	17

TABLES

TABLE 1.1. CHANGES IN APPLICATIONS AND ADMISSIONS FOR FALL SEMESTERS, 2012-2016	2
TABLE 1.2. APPLICATIONS AND ADMISSIONS FOR FALL SEMESTERS, 2012-2016	3
TABLE 1.3. APPLICATIONS AND ADMISSIONS BY ETHNICITY AND GENDER FOR FALL SEMESTERS, 2012-2016	4
TABLE 1.4. FEE-PAID APPLICATIONS BY SCHOOL FOR FALL SEMESTERS, 2012-2016	6
TABLE 2.1. AVERAGE GRE PERCENTILES FOR FALL SEMESTERS, 2007-2016	10
TABLE 2.2. AVERAGE GRE PERCENTILES BY SCHOOL FOR FALL SEMESTERS, 2007-2016	11
TABLE 2.3. AVERAGE TOTAL GMAT SCORES FOR FALL SEMESTERS, 2007-2016	16
TABLE 3.1. TOTAL GRADUATE ENROLLMENT BY GENDER FOR FALL SEMESTERS, 2007-2016	18
TABLE 3.2. TOTAL GRADUATE ENROLLMENT BY ETHNICITY AND GENDER FOR FALL SEMESTERS, 2012-2016	18
TABLE 3.3. GRADUATE ENROLLMENT BY SCHOOL FOR FALL SEMESTERS, 2007-2016	20
TABLE 3.4. GRADUATE ENROLLMENT IN HARPUR COLLEGE OF ARTS & SCIENCES FOR FALL SEMESTERS, 2007-2016	21
TABLE 3.5. GRADUATE ENROLLMENT IN WATSON SCHOOL OF ENGINEERING FOR FALL SEMESTERS, 2007-2016	25
TABLE 3.6. GRADUATE ENROLLMENT IN GRADUATE SCHOOL OF EDUCATION FOR FALL SEMESTERS, 2007-2016	27
TABLE 3.7. GRADUATE ENROLLMENT IN SCHOOL OF MANAGEMENT FOR FALL SEMESTERS, 2007-2016	30
TABLE 3.8. GRADUATE ENROLLMENT IN DECKER SCHOOL OF NURSING FOR FALL SEMESTERS, 2007-2016	31
TABLE 3.9. GRADUATE ENROLLMENT IN COLLEGE OF COMMUNITY AND PUBLIC AFFAIRS FOR FALL SEMESTERS, 2007-2016	33
TABLE 3.10. GRADUATE ENROLLMENT IN GRADUATE SCHOOL - INTERDISCIPLINARY PROGRAMS FOR FALL SEMESTERS, 2007-2016	34
TABLE 3.11. INTERNATIONAL GRADUATE ENROLLMENT FOR FALL SEMESTERS, 2007-2016	35
TABLE 3.12. INTERNATIONAL GRADUATE ENROLLMENT BY SCHOOL FOR FALL SEMESTERS, 2007-2016	36

FIGURES

FIGURE 1.1. APPLICATION TO ENROLLMENT PROFILE FOR FALL SEMESTERS, 2012-2016	2
FIGURE 1.2. APPLICATIONS, ADMISSIONS, AND MATRICULATIONS BY ETHNICITY, FALL 2016	5
FIGURE 1.3. FEE-PAID APPLICATIONS BY SCHOOL FOR FALL SEMESTERS, 2012-2016	8
FIGURE 2.1. AVERAGE GRE PERCENTILES OF APPLICANTS, ADMITTEES, AND ENROLLEES FOR FALL SEMESTERS, 2007-2016	10
FIGURE 2.2. AVERAGE GRE PERCENTILES FOR NEW ENROLLED STUDENTS BY SCHOOL FOR FALL SEMESTERS, 2007-2016	14
FIGURE 2.3. AVERAGE GMAT SCORES OF APPLICANTS, ADMITTEES, AND ENROLLEES FOR FALL SEMESTERS, 2007-2016	16
FIGURE 3.1. TOTAL GRADUATE ENROLLMENT BY ETHNICITY, FALL 2016	19
FIGURE 3.2. GRADUATE ENROLLMENT FOR FALL SEMESTERS, 2007-2016	35

1

APPLICATIONS AND ADMISSIONS

TABLE 1.1. CHANGES IN APPLICATIONS AND ADMISSIONS FOR FALL SEMESTERS, 2012-2016

Year	2012	2013	2014	2015	2016
Applications Considered for Admission	3,535	4,133	4,677	4,498	5,044
<i>% Change</i>	2.9%	16.9%	13.2%	-3.8%	12.1%
Offered Admission	1,932	2,269	2,694	2,908	3,255
<i>% Change</i>	12.3%	17.4%	18.7%	7.9%	11.9%

FIGURE 1.1. APPLICATION TO ENROLLMENT PROFILE FOR FALL SEMESTERS, 2012-2016

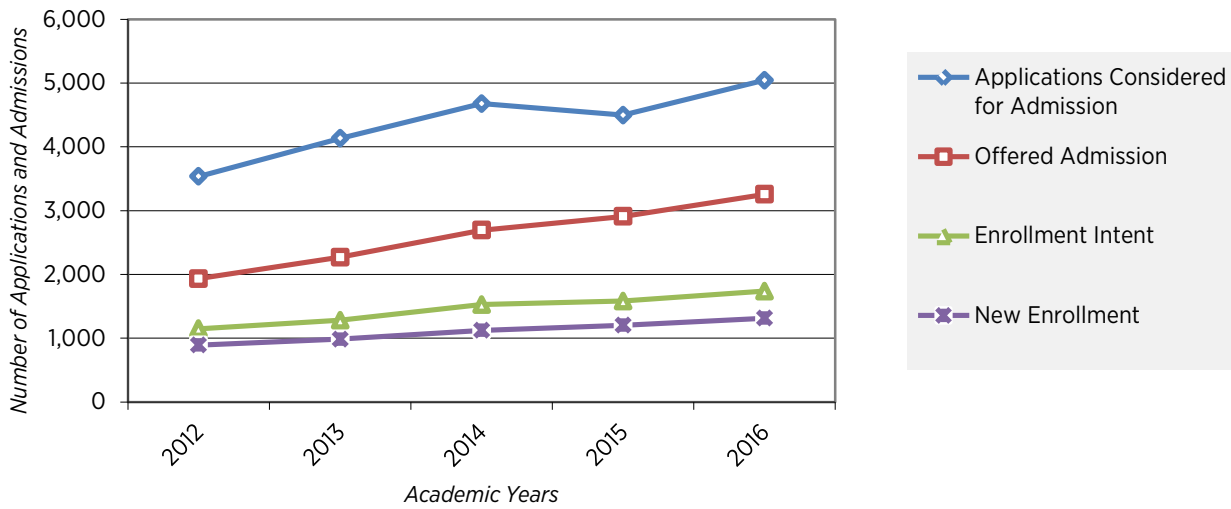


TABLE 1.2. APPLICATIONS AND ADMISSIONS FOR FALL SEMESTERS, 2012-2016

Year	2012	2013	2014	2015	2016
Total Degree Applications Received	4,532	5,857	6,843	6,427	6,491
Fees Not Paid	731	1,667	2,000	1,844	1,447
<i>% of Total Degree Applications</i>	16%	28%	29%	29%	22%
Fee-Paid	3,801	4,190	4,843	4,583	5,044
Application Withdrawn	252	27	109	62	271
Deferred before Decision	14	30	57	23	60
Considered for Admission	3,535	4,133	4,677	4,498	4,713
Complete/Forwarded	0	0	0	0	0
Incomplete after Review	46	109	0	0	0
Denied Admission	1,499	1,646	1,984	1,586	1,453
Offered Admission	1,932	2,269	2,694	2,908	3,255
<i>Selectivity Rate (%)</i>	55%	55%	58%	65%	69%
Provisional Admits	37	176	1	0	298
Deferred after Decision	58	109	146	109	93
Enrollment Intent	1,147	1,281	1,527	1,582	1,738
Deposit Waived - Withdrawn	7	8	2	4	29
Deposit Paid - Withdrawn	173	236	373	270	293
Deposit Waived	34	92	114	135	160
Deposit Paid	933	945	1,038	1,104	1,176
<i>Yield Rate (%)</i>	59%	56%	57%	54%	53%
New Enrollment	893	986	1,122	1,202	1,313
<i>% Change from Previous Year</i>	16%	10%	14%	7%	9%

TABLE 1.3. APPLICATIONS AND ADMISSIONS BY ETHNICITY AND GENDER FOR FALL SEMESTERS, 2012-2016

Year	2012			2013			2014			2015			2016		
Gender	M	F	Total	M	F	Total	M	F	Total	M	F	Total	M	F	Total
Applicants															
International	1,014	1,027	2,041	1,441	1,095	2,536	1,853	1,226	3,079	1,772	1,146	2,918	1,993	1,221	3,214
Hispanic/Latino	45	59	104	48	69	117	63	74	137	61	71	132	68	93	161
Native American	8	9	17	5	6	11	8	6	14	9	11	20	3	2	5
Asian	108	93	201	84	72	156	102	109	211	72	97	169	85	95	180
Black/African American	42	61	103	38	52	90	40	50	90	46	66	112	55	73	128
Native Hawaiian/Pacific Isln	14	12	26	4	4	8	5	1	6	0	2	2	3	3	6
White	549	691	1,240	541	706	1,247	589	694	1,283	561	667	1,228	598	663	1,261
Two or More Races	NA	NA	NA	NA	NA	NA	NA	NA	NA	NA	NA	NA	18	43	61
Unknown or Not Reported	38	31	69	13	12	25	12	11	23	0	2	2	18	10	28
Total	1,818	1,983	3,801	2,174	2,016	4,190	2,672	2,171	4,843	2,521	2,062	4,583	2,841	2,203	5,044
Offered Admission															
International	518	373	891	748	523	1,271	999	608	1,607	1,094	670	1,764	1,230	705	1,935
Hispanic/Latino	20	26	46	31	34	65	42	40	82	41	39	80	49	58	107
Native American	5	2	7	3	5	8	4	3	7	4	10	14	1	2	3
Asian	66	53	119	56	46	102	70	70	140	54	61	115	65	69	134
Black/African American	19	33	52	15	30	45	21	26	47	35	43	78	39	56	95
Native Hawaiian/Pacific Isln	8	9	17	4	2	6	4	1	5	0	1	1	3	2	5
White	341	378	719	344	410	754	386	406	792	391	462	853	426	488	914
Two or More Races	NA	NA	NA	NA	NA	NA	NA	NA	NA	NA	NA	NA	16	28	44
Unknown or Not Reported	42	39	81	11	7	18	14	0	14	1	2	3	11	7	18
Total	1,019	913	1,932	1,212	1,057	2,269	1,557	1,167	2,724	1,620	1,288	2,908	1,840	1,415	3,255
New Enrollment															
International	166	115	281	232	153	385	312	176	488	317	208	525	330	168	498
Hispanic/Latino	14	13	27	19	23	42	25	20	45	25	23	48	33	31	64
Native American	5	0	5	3	3	6	1	2	3	3	5	8	1	2	3
Asian	47	33	80	35	29	64	39	37	76	33	39	72	43	39	82
Black/African American	15	16	31	9	22	31	10	21	31	25	26	51	27	31	58
Native Hawaiian/Pacific Isln	6	8	14	3	2	5	2	0	2	0	1	1	3	1	4
White	211	205	416	216	230	446	223	243	466	222	269	491	275	296	571
Two or More Races	NA	NA	NA	NA	NA	NA	NA	NA	NA	NA	NA	NA	8	15	23
Unknown or Not Reported	18	21	39	4	3	7	9	2	11	3	3	6	6	4	10
Total	482	411	893	521	465	986	621	501	1,122	628	574	1,202	726	587	1,313

FIGURE 1.2. APPLICATIONS, ADMISSIONS, AND MATRICULATIONS BY ETHNICITY, FALL 2016

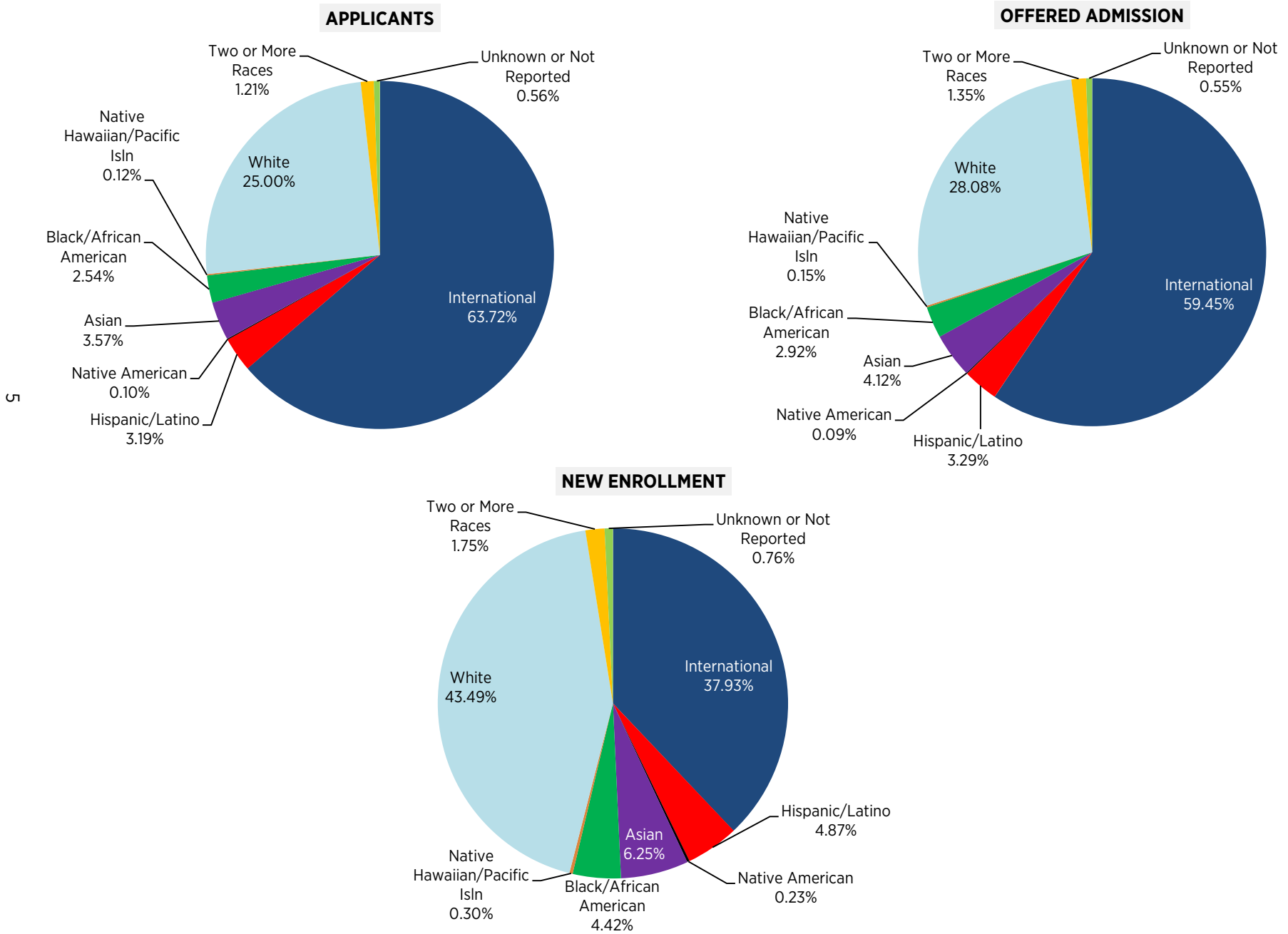


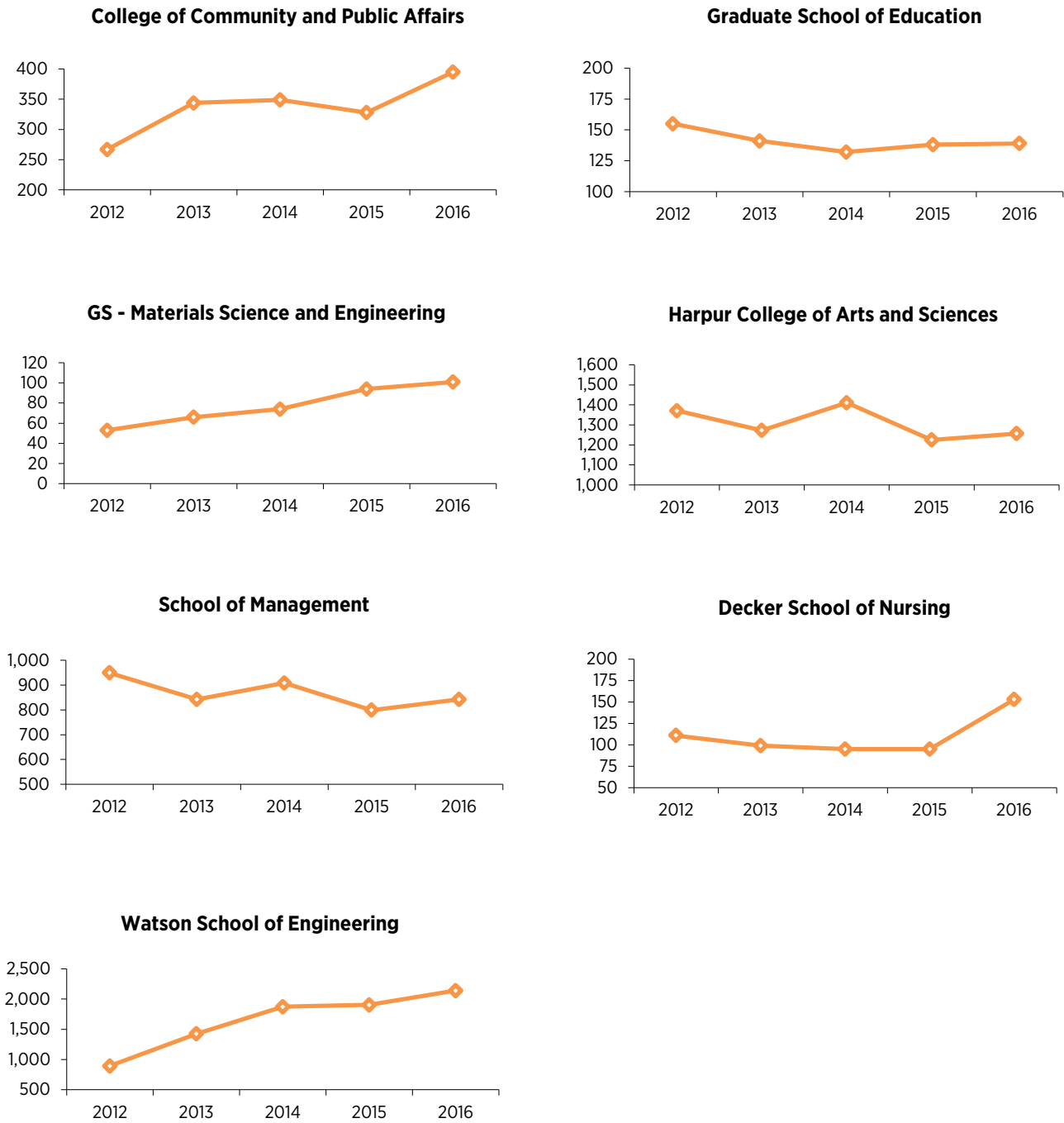
TABLE 1.4. FEE-PAID APPLICATIONS BY SCHOOL FOR FALL SEMESTERS, 2012-2016

Year	2012	2013	2014	2015	2016	% Change
COLLEGE OF COMMUNITY & PUBLIC AFFAIRS						
Community and Public Affairs (PhD)	N/A	12	14	13	22	69%
Public Administration (MPA)	107	140	145	136	172	26%
Social Work (MSW)	131	161	156	149	148	-1%
Student Affairs Administration (MS)	29	31	34	30	53	77%
Total Applications	267	344	349	328	395	
% Change	-4%	29%	1%	-6%	20%	
GRADUATE SCHOOL OF EDUCATION						
Professional Education (MSEd)	75	85	77	71	66	-7%
Professional Education (MAT)	53	33	40	45	49	9%
Educational Theory (EdD)	20	15	8	11	11	0%
Educational Certificates	7	8	7	11	13	18%
Total Applications	155	141	132	138	139	
% Change	-18%	-9%	-6%	5%	1%	
GS - MATERIALS SCIENCE AND ENGINEERING						
Certificate Programs	4	N/A	N/A	N/A	N/A	N/A
Master's - MSE	27	31	42	54	59	9%
PhD - MSE	22	35	32	40	42	5%
Total Applications	53	66	74	94	101	
% Change	130%	25%	12%	27%	7%	
GS - SUSTAINABLE COMMUNITIES						
	N/A	N/A	N/A	N/A	15	N/A
% Change	N/A	N/A	N/A	N/A	N/A	N/A
HARPUR COLLEGE OF ARTS AND SCIENCES						
Anthropology	101	81	100	81	92	14%
Art History	27	36	22	27	20	-26%
Asian and Asian-American Studies	15	17	23	19	14	-26%
Biology	100	80	77	95	95	0%
Chemistry	53	50	76	53	58	9%
Comparative Literature	28	40	38	26	34	31%
Economics	143	121	128	111	114	3%
English	114	84	90	89	97	9%
Geography	24	26	26	37	33	-11%
Geological Sciences	26	17	28	32	32	0%
History	80	85	82	51	59	16%
Mathematics	101	82	100	83	159	92%
Music	39	32	37	28	43	54%
Philosophy - SPEL	31	39	77	41	54	32%
Philosophy - PIC	4	N/A	N/A	N/A	N/A	N/A
Physics	19	25	24	31	31	0%
Political Science	66	68	71	47	46	-2%
Psychology- Neuroscience	50	30	41	31	48	55%
Psychology-Clinical	240	255	256	225	116	-48%
Psychology-Cognitive	28	25	30	30	33	10%
Romance Languages	5	4	5	2	6	200%

TABLE 1.4. FEE-PAID APPLICATIONS BY SCHOOL FOR FALL SEMESTERS, 2012-2016 (CONT'D)

Year	2012	2013	2014	2015	2016	% Change
HARPUR COLLEGE OF ARTS AND SCIENCES						
Sociology	47	50	46	46	41	-11%
Theater	10	6	7	6	2	-67%
Translation Studies	20	20	27	34	30	-12%
Total Applications	1,371	1,273	1,411	1,225	1,257	
% Change	11%	-7%	11%	-13%	3%	
SCHOOL OF MANAGEMENT						
MBA	188	187	177	178	191	7%
MS Accounting	633	521	604	495	555	12%
Ph.D.	65	59	68	58	50	-14%
Executive MBA - Health Care	2	N/A	N/A	N/A	N/A	N/A
Executive MBA - Corporate	1	2	N/A	N/A	N/A	N/A
Watson BS/SOM MBA Combined	10	10	18	19	11	-42%
Professional MBA - Manhattan	48	33	34	46	35	-24%
Executive MBA - Manhattan	2	30	7	3	0	-100%
Total Applications	949	842	908	799	842	
% Change	27%	-11%	8%	-12%	5%	
DECKER SCHOOL OF NURSING						
Certificate	7	5	9	17	27	59%
Master's	92	82	74	71	111	56%
DNP	9	7	5	2	2	0%
PhD	3	5	7	5	13	160%
Total Applications	111	99	95	95	153	
% Change	1%	-11%	-4%	0%	61%	
WATSON SCHOOL OF ENGINEERING						
Biomedical Engineering	35	42	54	60	105	75%
Computer Science	353	612	854	846	956	13%
Electrical and Computer Engineering	240	404	464	425	421	-1%
Mechanical Engineering	98	126	183	184	192	4%
Industrial Engineering	157	219	281	356	419	18%
Systems Science	12	22	38	33	49	48%
Total Applications	895	1,425	1,874	1,904	2,142	
% Change	3%	59%	32%	2%	13%	

FIGURE 1.3. FEE-PAID APPLICATIONS BY SCHOOL FOR FALL SEMESTERS, 2012-2016



2

TEST SCORES

TABLE 2.1. AVERAGE GRE PERCENTILES FOR FALL SEMESTERS, 2007-2016

	Year	2007	2008	2009	2010	2011	2012	2013	2014	2015	2016
All Applicants	V	55	54	53	55	56	56	45	43	43	43
	Q	64	67	68	67	68	69	68	66	66	67
	A	40	36	36	36	35	37	31	31	32	31
Offered Admission	V	56	55	53	55	56	55	45	43	43	43
	Q	64	66	71	70	71	72	71	70	70	69
	A	41	38	35	34	33	35	30	31	31	32
Enrolled	V	54	54	53	54	58	55	45	44	46	44
	Q	59	60	61	65	63	66	63	64	64	62
	A	42	41	39	38	39	40	33	33	35	34

FIGURE 2.1. AVERAGE GRE PERCENTILES OF APPLICANTS, ADMITTEES, AND ENROLLEES FOR FALL SEMESTERS, 2007-2016

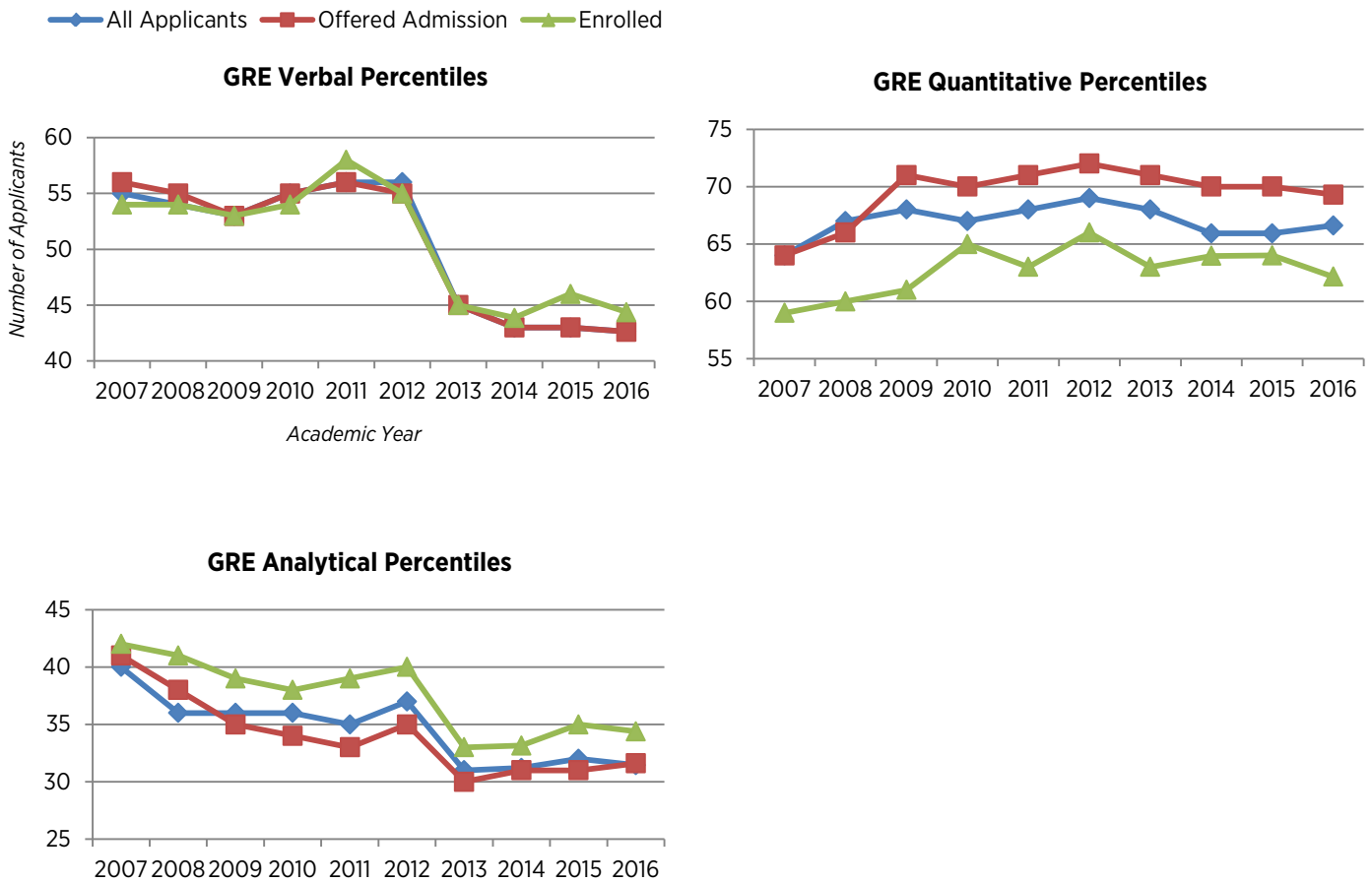


TABLE 2.2. AVERAGE GRE PERCENTILES BY SCHOOL FOR FALL SEMESTERS, 2007-2016

	Year	2007	2008	2009	2010	2011	2012	2013	2014	2015	2016
COLLEGE OF COMMUNITY AND PUBLIC AFFAIRS											
All Applicants	V	44	48	40	54	56	48	41	41	46	46
	Q	34	45	45	54	58	55	64	61	56	59
	A	45	40	30	36	41	36	28	32	36	32
Offered Admission	V	45	54	43	53	63	52	47	48	53	57
	Q	34	43	30	54	55	53	59	57	52	54
	A	53	50	32	36	38	39	34	40	43	40
Enrolled	V	44	40	35	45	48	43	46	43	53	58
	Q	28	25	22	39	37	37	44	39	47	44
	A	63	39	15	49	37	42	43	43	41	47
GRADUATE SCHOOL OF EDUCATION											
All Applicants	V	53	54	52	52	58	57	51	50	54	53
	Q	10	44	45	47	48	54	48	44	40	48
	A	49	47	44	43	46	48	44	45	47	52
Offered Admission	V	56	54	57	58	59	62	57	55	63	57
	Q	44	44	47	47	46	54	47	43	39	47
	A	54	49	46	49	49	53	50	53	57	57
Enrolled	V	56	56	55	57	60	68	50	53	62	58
	Q	41	45	49	47	45	59	39	41	37	41
	A	54	50	46	52	51	62	45	51	53	59
GS - MATERIALS SCIENCE AND ENGINEERING											
All Applicants	V	N/A	N/A	N/A	47	51	49	39	39	35	40
	Q	N/A	N/A	N/A	86	89	83	86	84	87	84
	A	N/A	N/A	N/A	24	17	28	19	20	19	21
Offered Admission	V	N/A	N/A	N/A	57	44	61	47	43	40	46
	Q	N/A	N/A	N/A	83	86	84	89	87	91	85
	A	N/A	N/A	N/A	23	12	37	25	23	20	24
Enrolled	V	N/A	N/A	N/A	57	41	54	44	43	50	50
	Q	N/A	N/A	N/A	83	85	89	81	83	76	73
	A	N/A	N/A	N/A	23	12	29	21	27	39	25

TABLE 2.2. AVERAGE GRE PERCENTILES BY SCHOOL FOR FALL SEMESTERS, 2007-2016 (CONT'D)

	Year	2007	2008	2009	2010	2011	2012	2013	2014	2015	2016
HARPUR COLLEGE OF ARTS AND SCIENCES											
Social Sciences											
All Applicants	V	60	60	60	60	65	63	59	57	57	58
	Q	59	62	63	63	63	65	58	59	59	56
	A	44	41	42	42	41	42	43	44	46	43
Offered Admission	V	63	67	65	66	73	68	63	61	61	60
	Q	56	51	66	67	65	66	60	63	62	58
	A	47	60	47	46	49	46	46	48	47	44
Enrolled	V	59	64	69	67	73	66	63	61	61	59
	Q	50	54	57	64	57	60	48	54	53	50
	A	46	49	51	43	50	47	31	50	51	43
Fine Arts & Humanities											
All Applicants	V	71	71	74	60	75	71	65	65	64	68
	Q	44	54	50	63	49	48	46	42	43	41
	A	54	53	56	42	56	55	53	52	53	54
Offered Admission	V	73	77	75	81	80	76	67	68	65	64
	Q	44	45	50	49	47	50	48	44	42	40
	A	58	60	60	33	56	57	52	54	54	53
Enrolled	V	70	69	68	74	79	76	61	60	60	64
	Q	42	43	43	47	43	45	45	41	46	39
	A	53	55	57	58	55	59	46	45	49	52
Science & Math											
All Applicants	V	63	61	62	64	66	66	63	60	63	60
	Q	67	67	68	68	67	69	67	64	63	68
	A	50	44	49	46	48	51	51	49	53	46
Offered Admission	V	61	58	58	64	69	65	61	59	61	63
	Q	71	72	74	70	72	78	73	76	73	77
	A	45	41	43	41	49	48	45	43	48	47
Enrolled	V	58	58	58	62	63	64	63	61	59	61
	Q	68	72	75	68	70	75	68	72	64	72
	A	41	43	45	42	45	48	45	47	46	46

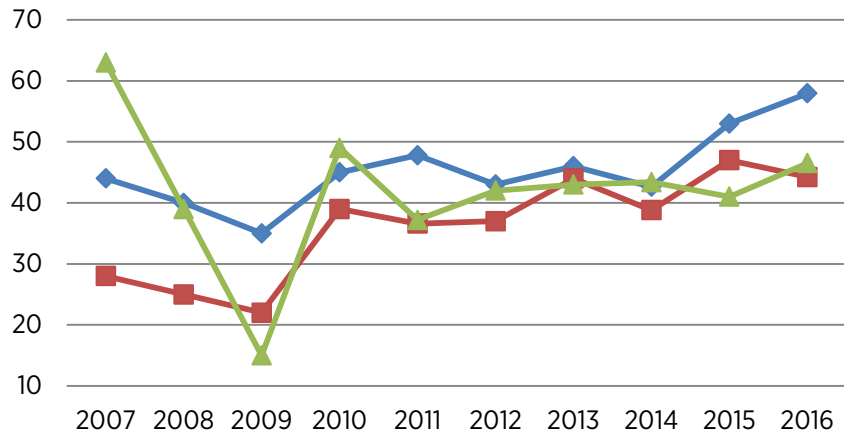
TABLE 2.2. AVERAGE GRE PERCENTILES BY SCHOOL FOR FALL SEMESTERS, 2007-2016 (CONT'D)

Year	2007	2008	2009	2010	2011	2012	2013	2014	2015	2016	
DECKER SCHOOL OF NURSING											
All Applicants	V	45	42	N/A	51	53	68	47	49	51	46
	Q	34	46	N/A	36	49	47	34	47	34	36
	A	42	30	N/A	28	43	31	38	44	31	34
Offered Admission	V	43	39	N/A	48	53	59	47	48	51	46
	Q	34	48	N/A	19	49	34	34	44	34	36
	A	44	32	N/A	41	43	32	38	39	31	34
Enrolled	V	39	32	N/A	16	46	61	47	66	79	62
	Q	37	31	N/A	18	44	42	40	45	60	46
	A	41	0	N/A	41	42	40	36	74	33	42
WATSON SCHOOL OF ENGINEERING											
All Applicants	V	43	42	37	37	40	40	30	30	31	32
	Q	80	81	81	80	80	80	77	73	73	72
	A	26	22	19	17	16	20	17	19	20	22
Offered Admission	V	45	43	41	41	41	42	33	32	32	33
	Q	80	81	82	82	82	81	81	77	75	75
	A	27	22	21	19	17	21	18	20	21	24
Enrolled	V	42	39	35	35	38	35	29	31	34	30
	Q	80	78	76	79	81	79	79	74	71	71
	A	27	23	19	19	16	21	16	20	23	22

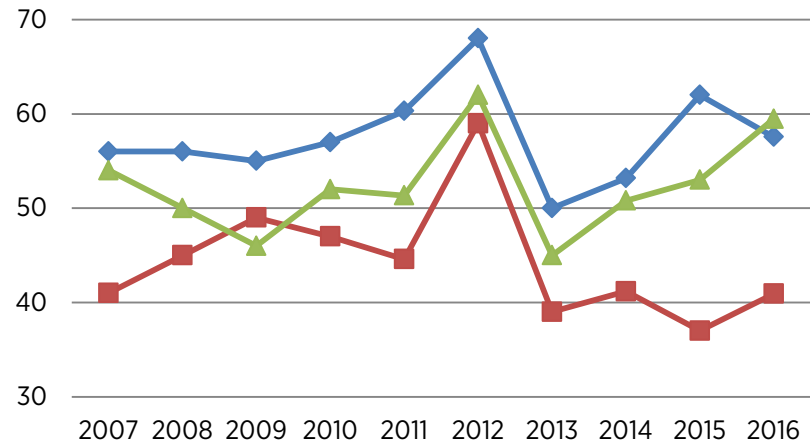
FIGURE 2.2. AVERAGE GRE PERCENTILES FOR NEW ENROLLED STUDENTS BY SCHOOL FOR FALL SEMESTERS, 2007-2016

Verbal Quantitative Analytical Writing

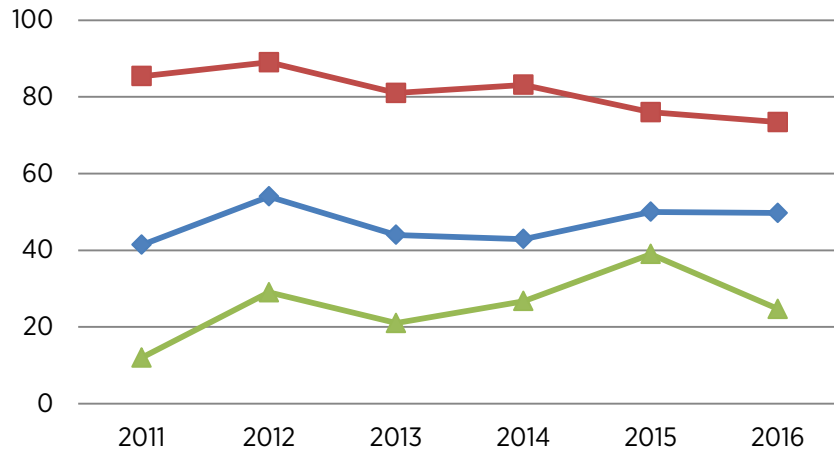
College of Community and Public Affairs



Graduate School of Education



Graduate School - Materials Science and Engineering



Harpur College (Social Sciences)

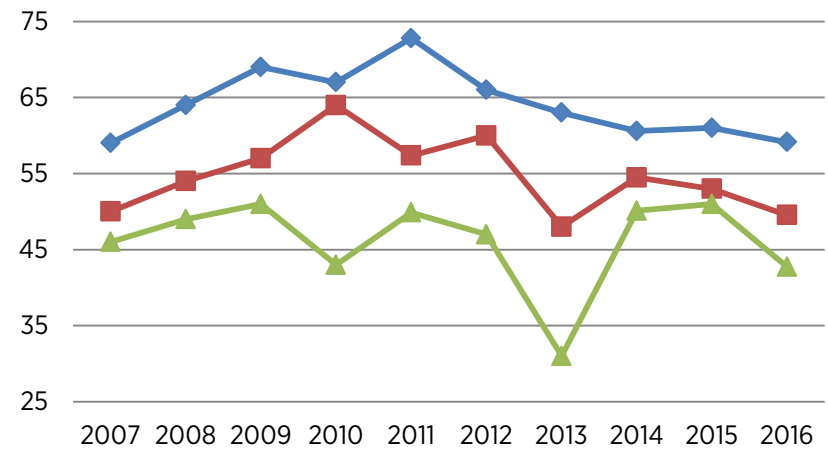
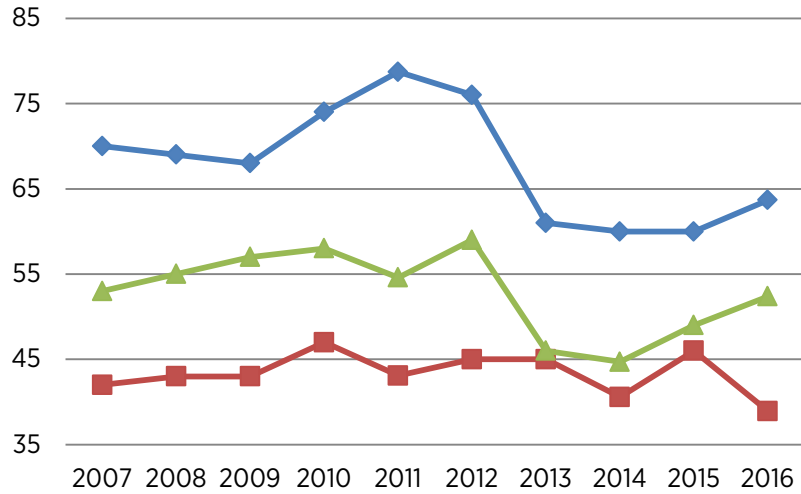


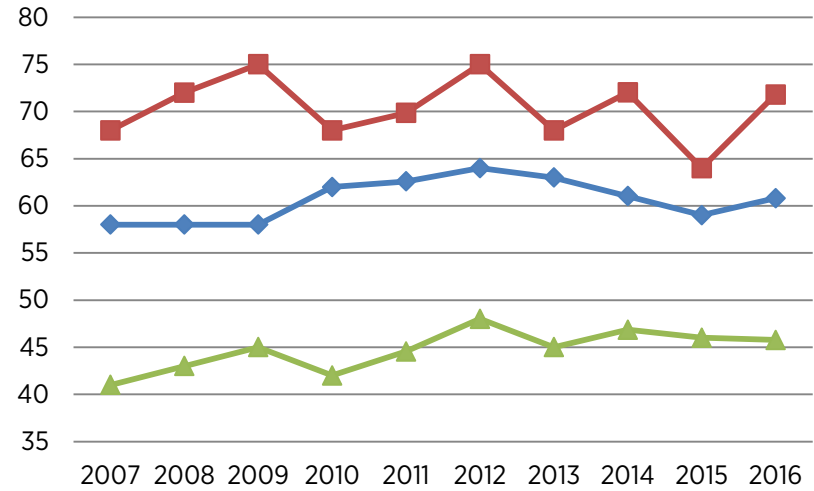
FIGURE 2.2. AVERAGE GRE PERCENTILES FOR NEW ENROLLED STUDENTS BY SCHOOL FOR FALL SEMESTERS, 2007-2016 (CONT'D)

15

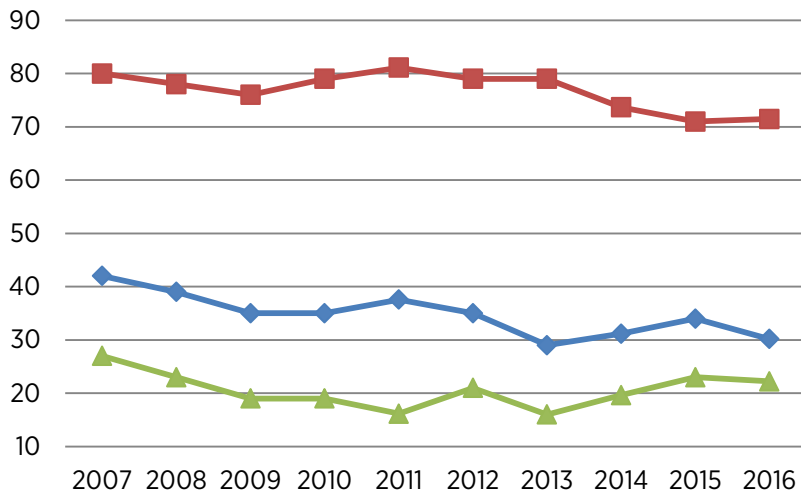
Harpur College (Fine Arts & Humanities)



Harpur College (Science & Math)



Watson School of Engineering



Decker School of Nursing

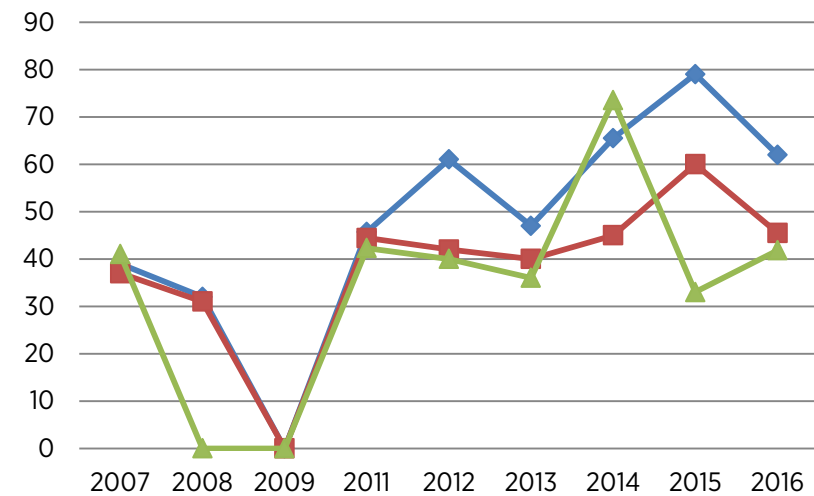
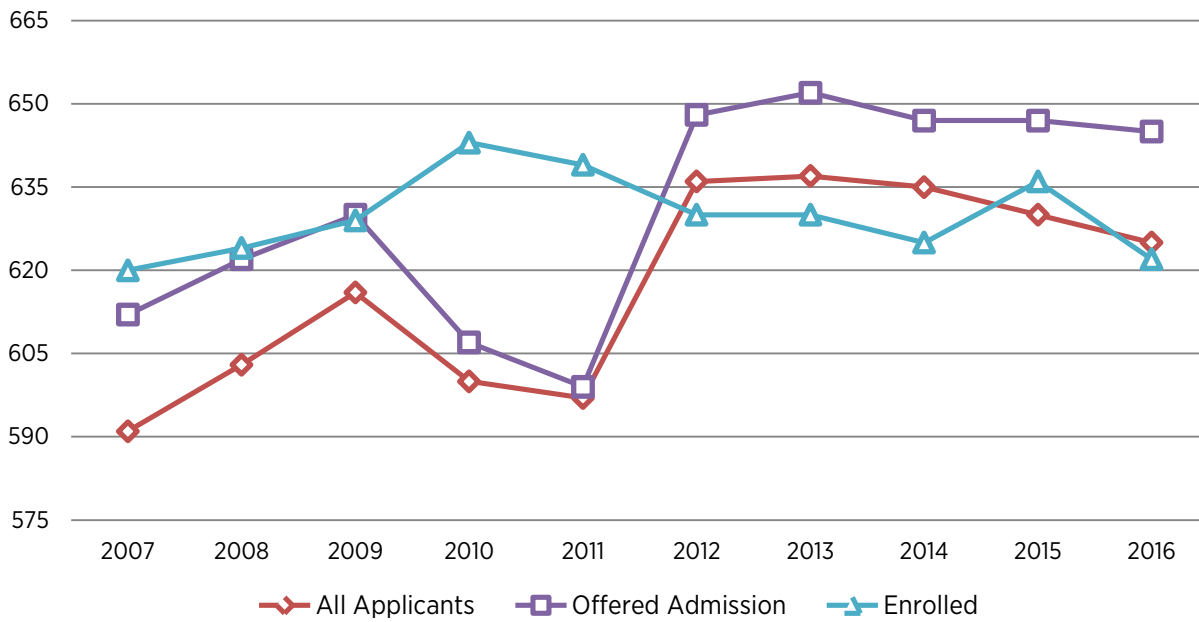


TABLE 2.3. AVERAGE TOTAL GMAT SCORES FOR FALL SEMESTERS, 2007-2016

	Year	2007	2008	2009	2010	2011	2012	2013	2014	2015	2016
All Applicants	Total Score	591	603	616	600	597	636	637	635	630	625
	Percentile	66	67	70	64	62	72	72	72	70	68
Offered Admission	Total Score	612	622	630	607	599	648	652	647	647	645
	Percentile	71	73	74	63	63	77	78	76	74	74
Enrolled	Total Score	620	624	629	643	639	630	630	625	636	622
	Percentile	69	70	72	74	73	71	71	69	71	66

FIGURE 2.3. AVERAGE GMAT SCORES OF APPLICANTS, ADMITTEES, AND ENROLLEES FOR FALL SEMESTERS, 2007-2016



3

GRADUATE STUDENT ENROLLMENT

TABLE 3.1. TOTAL GRADUATE ENROLLMENT BY GENDER FOR FALL SEMESTERS, 2007-2016

Year	2007	2008	2009	2010	2011	2012	2013	2014	2015	2016
Male	1,481	1,567	1,579	1,618	1,494	1,486	1,550	1,716	1,781	1,905
Female	1,439	1,533	1,477	1,520	1,454	1,488	1,529	1,571	1,650	1,744
Total Enrollees	2,920	3,100	3,056	3,138	2,948	2,974	3,079	3,287	3,431	3,649
% Change	2%	6%	-1%	3%	-6%	1%	4%	7%	4%	6%

TABLE 3.2. TOTAL GRADUATE ENROLLMENT BY ETHNICITY AND GENDER FOR FALL SEMESTERS, 2012-2016

Year	2012			2013			2014			2015			2016		
	M	F	Total	M	F	Total	M	F	Total	M	F	Total	M	F	Total
International	550	365	915	658	432	1,090	824	513	1,337	899	562	1,461	955	578	1,533
Hispanic/Latino	61	64	125	61	66	127	60	66	126	74	64	138	81	76	157
Native American	9	6	15	9	10	19	4	10	14	9	9	18	2	6	8
Asian	65	62	127	63	66	129	84	76	160	68	73	141	77	80	157
Black/African American	46	54	100	43	63	106	43	66	109	54	71	125	50	65	115
Native Hawaiian/Pacific Isln	32	24	56	21	20	41	13	13	26	8	11	19	8	8	16
White	676	854	1,530	658	827	1,485	659	801	1,460	649	839	1,488	661	845	1,506
Two or More Races	N/A	N/A	N/A	N/A	N/A	N/A	N/A	N/A	N/A	N/A	N/A	N/A	14	26	40
Unknown or Not Reported	47	59	106	37	45	82	29	26	55	20	21	41	57	60	117

FIGURE 3.1. TOTAL GRADUATE ENROLLMENT BY ETHNICITY, FALL 2016

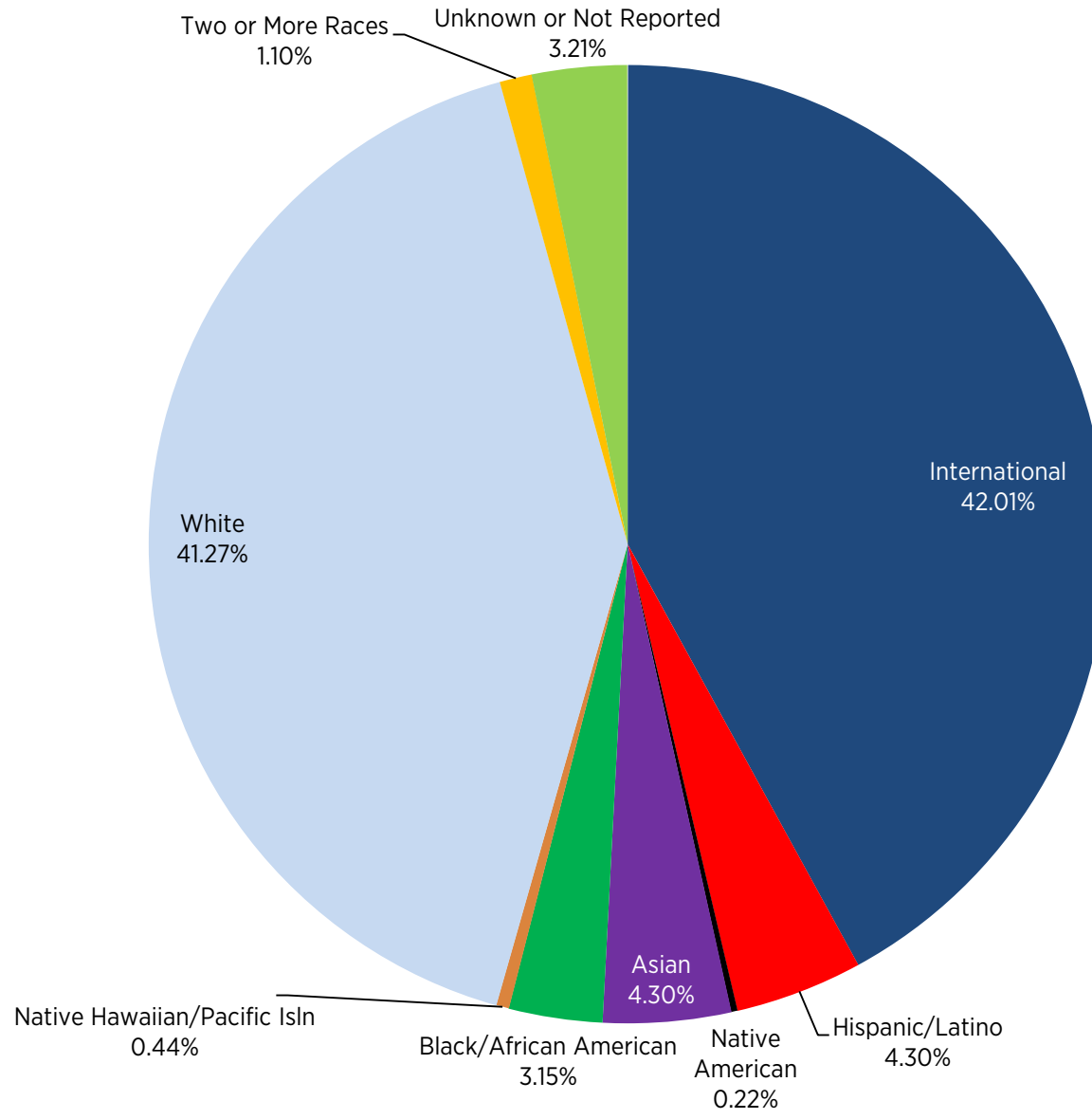


TABLE 3.3. GRADUATE ENROLLMENT BY SCHOOL FOR FALL SEMESTERS, 2007-2016

Year	2007	2008	2009	2010	2011	2012	2013	2014	2015	2016
HARPUR COLLEGE OF ARTS & SCIENCES										
New Students	244	231	218	227	205	226	219	237	257	274
Continuing Students	921	945	948	910	887	879	862	845	859	860
Total	1,165	1,176	1,166	1,137	1,092	1,105	1,081	1,082	1,116	1,134
<i>% of Total Graduate Enrollment</i>	43%	41%	40%	38%	39%	39%	36%	34%	33%	32%
<i>% Change from Previous Year</i>	1.3%	0.9%	-0.9%	-2.5%	-4%	1.2%	-2.2%	0.1%	3.1%	1.6%
WATSON SCHOOL OF ENGINEERING										
New Students	171	179	162	182	156	207	284	393	419	426
Continuing Students	514	530	560	555	517	440	507	583	663	736
Total	685	709	722	737	673	647	791	976	1,082	1,162
<i>% of Total Graduate Enrollment</i>	25%	25%	25%	25%	24%	23%	27%	31%	32%	32%
<i>% Change from Previous Year</i>	10.1%	3.5%	1.8%	2.1%	-8.7%	-3.9%	22.3%	23.4%	10.9%	7.4%
SCHOOL OF EDUCATION										
New Students	58	87	83	83	72	55	71	73	77	78
Continuing Students	198	207	232	222	219	190	155	150	158	156
Total	256	294	315	305	291	245	226	223	235	234
<i>% of Total Graduate Enrollment</i>	9%	10%	11%	10%	10%	9%	8%	7%	7%	7%
<i>% Change from Previous Year</i>	2.8%	14.8%	7.1%	-3.2%	-4.6%	-15.8%	-7.8%	-1.3%	5.4%	-0.4%
SCHOOL OF MANAGEMENT										
New Students	154	182	150	202	198	233	242	253	252	270
Continuing Students	98	140	167	126	90	114	111	148	136	144
Total	252	322	317	328	288	347	353	401	388	414
<i>% of Total Graduate Enrollment</i>	9%	11%	11%	11%	10%	12%	12%	13%	12%	12%
<i>% Change from Previous Year</i>	10%	27.8%	-1.6%	3.5%	-12.2%	20.5%	1.7%	13.6%	-3.2%	6.7%
DECKER SCHOOL OF NURSING										
New Students	31	29	42	45	55	63	59	46	51	86
Continuing Students	82	87	77	112	130	153	174	156	139	130
Total	113	116	119	157	185	216	233	202	190	216
<i>% of Total Graduate Enrollment</i>	4%	4%	4%	5%	7%	8%	8%	6%	6%	6%
<i>% Change from Previous Year</i>	32.9%	2.7%	2.6%	31.9%	17.8%	16.8%	7.9%	-13.3%	-5.9%	13.7%
COLLEGE OF COMMUNITY AND PUBLIC AFFAIRS										
New Students	93	93	80	93	78	89	113	107	135	164
Continuing Students	152	176	176	181	165	151	151	157	175	207
Total	245	269	256	274	243	240	264	264	310	371
<i>% of Total Graduate Enrollment</i>	9%	9%	9%	9%	9%	8%	9%	8%	10%	11%
<i>% Change from Previous Year</i>	-16.1%	9.8%	-4.8%	7%	-11.3%	-1.2%	10%	0%	17.4%	19.7%
GRADUATE SCHOOL										
New Students	NA	NA	NA	4	5	11	4	14	11	15
Continuing Students	NA	NA	NA	33	29	32	29	31	35	39
Total	NA	NA	NA	37	34	43	33	45	46	54
<i>% of Total Graduate Enrollment</i>	NA	NA	NA	NA	1%	2%	1%	1%	1%	2%
<i>% Change from Previous Year</i>	NA	NA	NA	NA	-8.1%	26.5%	-23.3%	36.4%	2.2%	17.4%
Total Graduate Enrollment*	2,716	2,886	2,895	2,975	2,806	2,843	2,981	3,193	3,367	3,585
<i>% Change from Previous Year</i>	3.4%	6.3%	0.3%	2.8%	-5.7%	1.3%	4.9%	7.1%	5.4%	6.5%

*Degree-seeking students

TABLE 3.4. GRADUATE ENROLLMENT IN HARPUR COLLEGE OF ARTS & SCIENCES FOR FALL SEMESTERS, 2007-2016

Year	2007	2008	2009	2010	2011	2012	2013	2014	2015	2016
ANTHROPOLOGY										
New Students	24	16	19	16	24	27	27	35	19	32
Continuing Students	109	123	105	112	93	106	109	112	119	123
Total	133	139	124	128	117	133	136	147	138	155
<i>% Change from Previous Year</i>	3.1%	4.5%	-10.8%	3.2%	-8.6%	13.7%	2.3%	8.1%	-6.1%	12.3%
ART HISTORY										
New Students	8	7	4	5	4	8	7	5	9	5
Continuing Students	28	33	32	28	33	30	28	25	28	28
Total	36	40	36	33	37	38	35	30	37	33
<i>% Change from Previous Year</i>	9.1%	11.1%	-10%	-8.3%	12.1%	2.7%	-7.9%	-14.3%	23.3%	-10.8%
ASIAN & ASIAN AMERICAN STUDIES										
New Students	N/A	N/A	N/A	N/A	N/A	3	6	7	7	3
Continuing Students	N/A	N/A	N/A	N/A	N/A	0	3	7	6	7
Total	N/A	N/A	N/A	N/A	N/A	3	9	14	13	10
<i>% Change from Previous Year</i>	N/A	N/A	N/A	N/A	N/A	N/A	200%	55.6%	-7.1%	-23.1%
BIOLOGICAL SCIENCES										
New Students	24	16	26	15	14	17	19	15	27	32
Continuing Students	41	40	51	63	57	55	55	50	48	51
Total	65	56	77	78	71	72	74	65	75	83
<i>% Change from Previous Year</i>	47.7%	-13.8%	37.5%	1.3%	-9%	1.4%	2.8%	-12.2%	15.4%	10.7%
CHEMISTRY										
New Students	13	16	6	9	9	9	10	13	16	12
Continuing Students	45	51	51	48	47	42	44	42	45	50
Total	58	67	57	57	56	51	54	55	61	62
<i>% Change from Previous Year</i>	9.4%	15.5%	-14.9%	0%	-1.8%	-8.9%	5.9%	1.9%	10.9%	1.6%
COMPARATIVE LITERATURE										
New Students	9	11	8	8	10	7	11	6	6	13
Continuing Students	56	54	56	50	46	53	54	55	55	48
Total	65	65	64	58	56	60	65	61	61	61
<i>% Change from Previous Year</i>	-13.3%	0%	-1.5%	-9.4%	-3.4%	7.1%	8.3%	-6.2%	0%	0%
ECONOMICS										
New Students	20	14	20	27	14	12	15	24	23	19
Continuing Students	49	56	52	52	57	44	38	41	45	46
Total	69	70	72	79	71	56	53	65	68	65
<i>% Change from Previous Year</i>	-1.4%	1.4%	2.9%	9.7%	-10.1%	-21.1%	-5.4%	22.6%	4.6%	-4.4%

TABLE 3.4. GRADUATE ENROLLMENT IN HARPUR COLLEGE OF ARTS & SCIENCES FOR FALL SEMESTERS, 2007-2016 (CONT'D)

Year	2007	2008	2009	2010	2011	2012	2013	2014	2015	2016
ENGLISH										
New Students	24	15	22	15	16	25	20	19	15	21
Continuing Students	104	102	91	89	81	79	78	70	77	69
Total	128	117	113	104	97	104	98	89	92	90
<i>% Change from Previous Year</i>	-7.9%	-8.6%	-3.4%	-8%	-6.7%	7.2%	-5.8%	-9.2%	3.4%	-2.2%
GEOGRAPHY										
New Students	10	9	8	16	8	9	13	12	19	12
Continuing Students	15	13	11	16	25	20	17	22	16	21
Total	25	22	19	32	33	29	30	34	35	33
<i>% Change from Previous Year</i>	25%	-12%	-13.6%	68.4%	3.1%	-12.1%	3.4%	13.3%	2.9%	-5.7%
GEOLOGICAL SCIENCES										
New Students	5	6	6	5	5	3	3	8	7	7
Continuing Students	30	29	30	28	25	28	23	18	21	15
Total	35	35	36	33	30	31	26	26	28	22
<i>% Change from Previous Year</i>	-5.4%	0%	2.9%	-8.3%	-9.1%	3.3%	-16.1%	0%	7.7%	-21.4%
HISTORY										
New Students	19	15	15	19	15	10	21	16	13	16
Continuing Students	90	95	82	77	82	72	62	62	59	55
Total	109	110	97	96	97	82	83	78	72	71
<i>% Change from Previous Year</i>	7.9%	0.9%	-11.8%	-1%	1%	-15.5%	1.2%	-6%	-7.7%	-1.4%
MATHEMATICS										
New Students	13	18	19	14	18	22	17	18	19	31
Continuing Students	44	39	49	51	54	53	52	54	51	51
Total	57	57	68	65	72	75	69	72	70	82
<i>% Change from Previous Year</i>	-3.4%	0%	19.3%	-4.4%	10.8%	4.2%	-8%	4.3%	-2.8%	17.1%
MATERIAL SCIENCES										
New Students	4	3	1	2	0	0	N/A	N/A	N/A	N/A
Continuing Students	15	18	22	1	1	1	N/A	N/A	N/A	N/A
Total	19	21	23	3	1	1	N/A	N/A	N/A	N/A
<i>% Change from Previous Year</i>	35.7%	10.5%	9.5%	-87.0%	-66.7%	0%	N/A	N/A	N/A	N/A
MUSIC PERFORMANCE										
New Students	13	15	7	7	8	8	6	10	8	15
Continuing Students	7	13	17	8	10	11	11	7	8	7
Total	20	28	24	15	18	19	17	17	16	22
<i>% Change from Previous Year</i>	0%	40%	-14.3%	-37.5%	20%	5.6%	-10.5%	0%	-5.9%	37.5%

TABLE 3.4. GRADUATE ENROLLMENT IN HARPUR COLLEGE OF ARTS & SCIENCES FOR FALL SEMESTERS, 2007-2016 (CONT'D)

Year	2007	2008	2009	2010	2011	2012	2013	2014	2015	2016
PHILOSOPHY - PIC										
New Students	4	9	4	5	3	0	0	0	0	0
Continuing Students	48	44	45	45	33	28	21	16	14	12
PHILOSOPHY - SPEL										
New Students	7	7	11	8	7	6	7	6	4	8
Continuing Students	23	26	27	31	30	28	28	30	33	30
Total	82	86	87	89	73	62	56	52	51	50
<i>% Change from Previous Year</i>	-3.5%	4.9%	1.2%	2.3%	-18%	-15.1%	-9.7%	-7.1%	-1.9%	-2%
PHYSICS										
New Students	2	4	3	6	6	9	7	6	9	7
Continuing Students	5	4	7	8	13	19	25	29	30	34
Total	7	8	10	14	19	28	32	35	39	41
<i>% Change from Previous Year</i>	16.7%	14.3%	25%	40%	35.7%	47.4%	14.3%	9.4%	11.4%	5.1%
POLITICAL SCIENCE										
New Students	11	10	10	10	10	18	10	5	10	7
Continuing Students	38	36	41	39	39	37	40	41	36	31
Total	49	46	51	49	49	55	50	46	46	38
<i>% Change from Previous Year</i>	8.9%	-6.1%	10.9%	-3.9%	0%	12.2%	-9.1%	-8%	0%	-17.4%
PSYCHOLOGY										
Behavioral Neuroscience										
New Students	6	6	4	8	6	9	2	5	5	6
Continuing Students	21	23	22	21	21	20	20	19	18	24
Cognitive										
New Students	4	5	2	5	5	4	3	3	4	4
Continuing Students	15	14	16	14	14	14	18	17	18	16
Clinical										
New Students	8	6	4	7	11	5	5	7	7	6
Continuing Students	35	38	34	31	34	39	37	37	34	31
Total	89	92	82	86	91	91	85	88	86	87
<i>% Change from Previous Year</i>	7.2%	3.4%	-10.9%	4.9%	5.8%	0%	-6.6%	3.5%	-2.3%	1.2%

TABLE 3.4. GRADUATE ENROLLMENT IN HARPUR COLLEGE OF ARTS & SCIENCES FOR FALL SEMESTERS, 2007-2016 (CONT'D)

Year	2007	2008	2009	2010	2011	2012	2013	2014	2015	2016
SOCIOLOGY										
New Students	6	11	6	14	6	8	4	7	8	6
Continuing Students	79	66	66	59	61	66	69	63	63	62
Total	85	77	72	73	67	74	73	70	71	68
<i>% Change from Previous Year</i>	4.9%	-9.4%	-6.5%	1.4%	-8.2%	10.4%	-1.4%	-4.1%	1.4%	-4.2%
ROMANCE LANGUAGES										
French										
New Students	0	1	0	0	0	1	0	0	1	0
Continuing Students	2	0	1	1	0	0	1	2	1	2
Italian										
New Students	0	0	1	0	0	0	0	2	1	0
Continuing Students	1	3	2	2	0	0	0	1	1	1
Spanish										
New Students	3	3	0	2	0	0	0	0	0	1
Continuing Students	2	3	3	4	4	1	1	1	0	0
Total	8	10	7	9	4	2	2	6	4	4
<i>% Change from Previous Year</i>	-27.3%	25%	-30%	28.6%	-55.6%	-50%	0%	200%	-33.3%	0%
THEATER										
New Students	2	3	3	3	4	3	2	2	3	0
Continuing Students	4	6	4	7	5	9	5	2	4	6
Total	7	8	7	10	9	12	7	4	7	6
<i>% Change from Previous Year</i>	16.7%	14.3%	-12.5%	42.9%	-10%	33.3%	-41.7%	-42.9%	75%	-14.3%
TRANSLATION STUDIES										
New Students	1	5	2	1	2	3	4	7	15	11
Continuing Students	10	16	22	25	22	24	23	21	29	40
Total	11	21	24	26	24	27	27	28	44	51
<i>% Change from Previous Year</i>	120%	90.9%	14.3%	8.3%	-7.7%	12.5%	0%	3.7%	57.1%	15.9%

TABLE 3.5. GRADUATE ENROLLMENT IN WATSON SCHOOL OF ENGINEERING FOR FALL SEMESTERS, 2007-2016

Year	2007	2008	2009	2010	2011	2012	2013	2014	2015	2016
COMPUTER SCIENCES										
MS										
New Students	0	71	61	75	43	71	105	129	167	167
Continuing Students	22	156	164	161	146	104	138	173	163	200
MS/PhD										
New Students	77	5	3	1	4	7	7	5	7	3
Continuing Students	173	45	48	53	54	53	47	50	52	67
Total	272	277	276	290	247	235	297	357	389	437
<i>% Change from Previous Year</i>	5.4%	1.8%	-0.4%	5.1%	-14.8%	-4.9%	26.4%	20.2%	9%	12.3%
ELECTRICAL ENGINEERING										
MS										
New Students	2	21	17	30	24	37	61	67	61	74
Continuing Students	16	62	80	72	48	39	51	78	57	58
MEng										
New Students	13	9	3	4	3	6	5	2	2	0
Continuing Students	23	31	20	10	10	8	5	2	5	6
MEng										
New Students	3	3	3	2	4	1	3	0	0	0
Continuing Students	6	4	3	1	2	4	2	2	0	0
MS/PhD										
New Students	19	9	2	4	5	10	12	11	11	7
Continuing Students	77	34	44	45	46	46	47	54	63	64
Total	159	173	172	168	142	151	186	216	199	209
<i>% Change from Previous Year</i>	14.4%	8.8%	-0.6%	-2.3%	-15.5%	6.3%	23.2%	16.1%	-7.9%	5%
MECHANICAL ENGINEERING										
MS										
New Students	0	6	0	20	26	12	19	29	18	26
Continuing Students	5	28	25	25	31	20	12	24	29	13
MEng										
New Students	0	0	0	1	1	0	1	2	1	0
Continuing Students	0	0	1	3	2	1	1	1	1	1
MS/PhD										
New Students	13	7	7	6	3	6	5	7	7	6
Continuing Students	51	27	27	34	35	30	34	35	41	46
Total	69	68	60	89	98	69	72	98	97	92
<i>% Change from Previous Year</i>	7.8%	-1.4%	-11.8%	48.3%	10.1%	-29.6%	4.3%	36.1%	-1%	-5.2%

TABLE 3.5. GRADUATE ENROLLMENT IN WATSON SCHOOL OF ENGINEERING FOR FALL SEMESTERS, 2007-2016 (CONT'D)

Year	2007	2008	2009	2010	2011	2012	2013	2014	2015	2016
INDUSTRIAL ENGINEERING/SYSTEMS SCIENCE										
MS										
New Students	31	32	24	21	26	36	27	68	57	70
Continuing Students	52	57	67	56	40	42	51	54	103	89
MEng										
New Students	0	1	0	0	0	1	2	2	6	1
Continuing Students	1	0	1	2	2	0	2	1	1	6
MS (Exec. Health Sys. Manhattan-ISE)										
New Students	N/A	N/A	N/A	N/A	N/A	N/A	1	13	12	13
Continuing Students	N/A	N/A	N/A	N/A	N/A	N/A	16	1	0	1
MS (Health Systems-ISE)										
New Students	N/A	N/A	N/A	N/A	N/A	N/A	3	4	12	2
Continuing Students	N/A	N/A	N/A	N/A	N/A	N/A	5	5	11	16
MS (Systems Science)										
New Students	0	3	6	4	1	4	4	2	0	3
Continuing Students	4	9	10	17	14	9	8	8	8	7
MEng (Systems Engineering)										
New Students	N/A	N/A	N/A	N/A	0	0	1	1	0	1
Continuing Students	N/A	N/A	N/A	N/A	2	3	0	1	1	3
MS (Health Systems-SS)										
New Students	N/A	N/A	N/A	N/A	N/A	N/A	N/A	1	0	0
Continuing Students	N/A	N/A	N/A	N/A	N/A	N/A	N/A	0	5	2
MS (Exec. Health Sys. Manhattan-SS)										
New Students	N/A	N/A	N/A	N/A	N/A	N/A	0	14	18	14
Continuing Students	N/A	N/A	N/A	N/A	N/A	N/A	14	2	0	1
MS/PhD (Indust.Sys. Eng)										
New Students	0	4	9	6	8	9	14	10	16	11
Continuing Students	0	32	34	42	42	40	38	47	56	76
MS/PhD (Systems Sci)										
New Students	9	4	2	3	1	2	1	4	3	3
Continuing Students	71	21	19	16	21	21	17	18	28	28
Total	168	163	172	167	157	167	204	256	337	347
<i>% Change from Previous Year</i>	<i>13.5%</i>	<i>-3%</i>	<i>5.5%</i>	<i>-2.9%</i>	<i>-6%</i>	<i>6.4%</i>	<i>22.2%</i>	<i>25.5%</i>	<i>31.6%</i>	<i>3%</i>
MATERIALS ENGINEERING										
New Students	4	2	9	1	0	N/A	N/A	N/A	N/A	N/A
Continuing Students	13	16	14	6	7	N/A	N/A	N/A	N/A	N/A
Total	17	18	23	7	7	N/A	N/A	N/A	N/A	N/A
<i>% Change from Previous Year</i>	<i>30.8%</i>	<i>5.9%</i>	<i>27.8%</i>	<i>-69.6%</i>	<i>0%</i>	<i>N/A</i>	<i>N/A</i>	<i>N/A</i>	<i>N/A</i>	<i>N/A</i>
BIOMEDICAL ENGINEERING										
MS										
New Students	N/A	0	5	3	7	4	11	17	18	20
Continuing Students	N/A	1	0	7	9	12	5	11	18	30
PhD										
New Students	N/A	2	1	1	0	1	2	5	3	5
Continuing Students	N/A	6	4	5	6	8	14	16	21	22
Total	N/A	9	10	16	22	25	32	49	60	77
<i>% Change from Previous Year</i>	<i>N/A</i>	<i>N/A</i>	<i>11.1%</i>	<i>60%</i>	<i>37.5%</i>	<i>13.6%</i>	<i>28%</i>	<i>53.1%</i>	<i>22.4%</i>	<i>28.3%</i>

TABLE 3.6. GRADUATE ENROLLMENT IN GRADUATE SCHOOL OF EDUCATION FOR FALL SEMESTERS, 2007-2016

Year	2007	2008	2009	2010	2011	2012	2013	2014	2015	2016
MA IN TEACHING										
Biology Adolescence										
New Students	5	7	3	6	1	2	2	1	3	5
Continuing Students	5	11	9	5	4	1	4	6	1	4
Chemistry Adolescence										
New Students	0	1	3	1	1	2	1	2	1	1
Continuing Students	3	0	1	1	1	1	2	1	4	2
Earth Science Adolescence										
New Students	0	0	1	5	1	0	0	0	1	1
Continuing Students	1	1	1	1	5	1	0	0	0	1
English Adolescence										
New Students	12	15	15	11	11	6	5	6	12	3
Continuing Students	13	17	18	17	12	10	9	8	7	17
French Adolescence										
New Students	N/A	N/A	N/A	N/A	N/A	1	2	0	1	0
Continuing Students	N/A	N/A	N/A	N/A	N/A	0	2	4	1	1
Mathematics Adolescence										
New Students	3	9	7	6	5	3	1	7	0	2
Continuing Students	12	10	14	10	4	8	4	2	5	1
Physics Adolescence										
New Students	N/A	0	1	N/A	1	1	1	1	1	0
Continuing Students	N/A	3	4	2	1	0	0	0	1	2
Social Studies Adolescence										
New Students	10	10	9	5	10	5	3	7	7	8
Continuing Students	16	19	19	19	10	11	7	7	7	10
Spanish Adolescence										
New Students	N/A	N/A	N/A	N/A	N/A	2	2	2	0	5
Continuing Students	N/A	N/A	N/A	N/A	N/A	0	3	3	2	0
TESOL-MAT										
New Students	N/A	N/A	N/A	N/A	N/A	N/A	N/A	N/A	N/A	1
Continuing Students	N/A	N/A	N/A	N/A	N/A	N/A	N/A	N/A	N/A	0
CRITI ESL										
New Students	N/A	N/A	N/A	N/A	N/A	N/A	N/A	N/A	N/A	5
Continuing Students	N/A	N/A	N/A	N/A	N/A	N/A	N/A	N/A	N/A	10
Educational Leadership Certificate										
New Students	N/A	N/A	0	3	1	2	5	7	5	8
Continuing Students	N/A	N/A	15	10	16	16	16	9	17	10
Total	80	103	120	102	84	72	69	73	76	97
<i>% Change from Previous Year</i>	<i>11.1%</i>	<i>28.8%</i>	<i>16.5%</i>	<i>-15%</i>	<i>-17.6%</i>	<i>-14.3%</i>	<i>-4.2%</i>	<i>5.8%</i>	<i>4.1%</i>	<i>27.6%</i>

TABLE 3.6. GRADUATE ENROLLMENT IN GRADUATE SCHOOL OF EDUCATION FOR FALL SEMESTERS, 2007-2016 (CONT'D)

Year	2007	2008	2009	2010	2011	2012	2013	2014	2015	2016
MS IN EDUCATION										
Biology Adolescence										
New Students	N/A	0	N/A	1	0	0	0	0	0	0
Continuing Students	N/A	1	N/A	0	1	1	0	0	0	0
Chemistry Adolescence										
New Students	N/A	N/A	N/A	N/A	0	0	0	0	0	0
Continuing Students	N/A	N/A	N/A	N/A	1	1	0	0	0	0
Earth Science Adolescence										
New Students	N/A	N/A	N/A	1	0	0	0	0	0	0
Continuing Students	N/A	N/A	N/A	0	1	0	0	0	0	0
English Adolescence										
New Students	N/A	1	2	1	0	0	0	0	0	0
Continuing Students	N/A	0	1	2	1	0	0	0	0	0
French Adolescence										
New Students	N/A	N/A	N/A	N/A	N/A	N/A	1	0	0	0
Continuing Students	N/A	N/A	N/A	N/A	N/A	N/A	0	0	0	0
Mathematics Adolescence										
New Students	1	1	1	2	1	1	0	1	0	0
Continuing Students	1	3	4	6	4	3	2	1	1	1
Social Studies Adolescence										
New Students	0	0	0	0	0	1	1	1	0	0
Continuing Students	2	1	1	0	0	0	1	1	1	1
Spanish Adolescence										
New Students	N/A	N/A	N/A	N/A	N/A	N/A	N/A	N/A	1	0
Continuing Students	N/A	N/A	N/A	N/A	N/A	N/A	N/A	N/A	1	1
Literacy Birth-6										
New Students	4	7	9	10	12	4	11	6	7	6
Continuing Students	30	24	27	19	28	24	15	18	19	18
Literacy 5-12										
New Students	4	6	3	3	4	4	5	1	3	2
Continuing Students	7	8	6	10	9	6	5	5	1	2
Early Childhood Literacy Education										
New Students	N/A	N/A	N/A	N/A	2	2	5	6	3	3
Continuing Students	N/A	N/A	N/A	N/A	11	5	3	4	7	5
Early Childhood Special Education										
New Students	N/A	N/A	N/A	3	6	4	7	7	8	13
Continuing Students	N/A	N/A	N/A	4	17	9	3	8	9	7

TABLE 3.6. GRADUATE ENROLLMENT IN GRADUATE SCHOOL OF EDUCATION FOR FALL SEMESTERS, 2007-2016 (CONT'D)

Year	2007	2008	2009	2010	2011	2012	2013	2014	2015	2016
Childhood Ed (Pre-Service)										
New Students	3	6	6	7	N/A	N/A	N/A	N/A	N/A	N/A
Continuing Students	9	6	7	10	N/A	N/A	N/A	N/A	N/A	N/A
Childhood Ed (In-Service)										
New Students	0	0	0	N/A	N/A	N/A	N/A	N/A	N/A	N/A
Continuing Students	0	0	1	N/A	N/A	N/A	N/A	N/A	N/A	N/A
Inclusive Childhood 1-6										
New Students	3	9	10	9	N/A	N/A	N/A	N/A	N/A	N/A
Continuing Students	10	9	19	28	N/A	N/A	N/A	N/A	N/A	N/A
Special Education Birth-2										
New Students	N/A	N/A	N/A	N/A	1	0	0	0	2	0
Continuing Students	N/A	N/A	N/A	N/A	1	1	0	1	1	2
Special Education Birth-6										
New Students	N/A	N/A	N/A	N/A	1	2	2	5	2	2
Continuing Students	N/A	N/A	N/A	N/A	3	3	6	6	10	8
Special Education Childhood										
New Students	3	3	6	2	1	2	6	2	4	0
Continuing Students	18	18	14	13	12	7	5	8	8	4
Special Education Adolescence										
New Students	1	6	4	4	3	2	4	3	4	1
Continuing Students	12	13	14	14	15	17	7	7	7	7
TESOL										
New Students	N/A	N/A	N/A	N/A	N/A	N/A	N/A	N/A	N/A	1
Continuing Students	N/A	N/A	N/A	N/A	N/A	N/A	N/A	N/A	N/A	0
Educational Studies										
New Students	0	1	0	0	0	0	0	0	5	2
Continuing Students	6	3	9	5	8	7	5	3	3	1
Educational Studies New Orleans										
New Students	N/A	N/A	N/A	N/A	8	4	2	2	0	0
Continuing Students	N/A	N/A	N/A	N/A	0	8	5	5	2	0
Total	117	128	145	174	128	115	96	101	109	87
<i>% Change from Previous Year</i>	<i>-11.4%</i>	<i>9.4%</i>	<i>13.3%</i>	<i>20%</i>	<i>-26.4%</i>	<i>-10.2%</i>	<i>-16.5%</i>	<i>5.2%</i>	<i>7.9%</i>	<i>-20.2%</i>
Education Doctoral EdD										
New Students	2	3	5	3	2	5	5	6	7	9
Continuing Students	43	42	46	46	54	50	51	43	43	41
Total	45	45	51	49	56	55	56	49	50	50
<i>% Change from Previous Year</i>	<i>-4.3%</i>	<i>0%</i>	<i>13.3%</i>	<i>-3.9%</i>	<i>14.3%</i>	<i>-1.8%</i>	<i>1.8%</i>	<i>-12.5%</i>	<i>2%</i>	<i>0%</i>

TABLE 3.7. GRADUATE ENROLLMENT IN SCHOOL OF MANAGEMENT FOR FALL SEMESTERS, 2007-2016

Year	2007	2008	2009	2010	2011	2012	2013	2014	2015	2016
ACCOUNTING										
MS										
New Students	40	63	57	135	108	156	144	170	168	137
Continuing Students	37	46	70	55	49	42	62	77	86	102
MS 3-2 (Oneonta)										
New Students	N/A	N/A	N/A	N/A	N/A	1	0	0	0	0
Continuing Students	N/A	N/A	N/A	N/A	N/A	0	0	0	0	0
MS Taxation Track										
New Students	N/A	N/A	N/A	N/A	N/A	N/A	N/A	N/A	N/A	31
Continuing Students	N/A	N/A	N/A	N/A	N/A	N/A	N/A	N/A	N/A	5
Total	77	109	127	190	157	199	206	247	254	275
<i>% Change from Previous Year</i>	120%	41.6%	16.5%	49.6%	-17.4%	26.8%	3.5%	19.9%	2.8%	8.3%
WATSON BS/MBA										
New Students	9	9	8	8	7	4	4	8	10	7
Continuing Students	0	1	1	1	1	0	0	1	0	0
Total	9	10	9	9	8	4	4	9	10	7
<i>% Change from Previous Year</i>	-25%	11.1%	-10%	0%	-11.1%	-50%	0%	125%	11.1%	-30%
MANAGEMENT										
New Students	0	5	8	2	6	4	5	4	6	16
Continuing Students	18	14	16	19	17	20	23	19	15	0
Total	18	19	24	21	23	24	28	23	21	16
<i>% Change from Previous Year</i>	-10%	5.6%	26.3%	-12.5%	9.5%	4.3%	16.7%	-17.9%	-8.7%	-23.8%
MASTER OF BUSINESS ADMINISTRATION										
Business Administration										
New Students	51	47	21	17	12	17	27	27	14	22
Continuing Students	41	53	53	34	20	17	25	31	26	15
Fast Track										
New Students	13	12	12	8	10	20	19	13	19	35
Continuing Students	0	2	3	0	0	0	1	2	7	4
Accelerated (Binghamton)										
New Students	6	6	10	5	3	1	3	4	3	11
Continuing Students	0	0	1	1	1	0	0	0	1	1
Fast-Track Pro. (Manhattan)										
New Students	21	25	22	27	17	30	23	27	32	27
Continuing Students	0	2	1	1	0	1	0	1	1	1
Executive - Health Care										
New Students	3	0	5	0	1	0	0	0	0	0
Continuing Students	0	3	0	6	0	0	0	0	0	0
Executive (Manhattan)										
New Students	N/A	N/A	N/A	N/A	20	0	17	0	0	0
Continuing Students	N/A	N/A	N/A	N/A	0	19	0	17	0	0
Executive - Corporate										
New Students	11	15	7	0	14	0	0	0	0	0
Continuing Students	2	19	22	9	2	15	0	0	0	0
Total	148	184	157	108	100	120	115	122	103	116
<i>% Change from Previous Year</i>	15.6%	24.3%	-14.7%	-31.2%	-7.4%	20%	-4.2%	6.1%	-15.6%	12.6%

TABLE 3.8. GRADUATE ENROLLMENT IN DECKER SCHOOL OF NURSING FOR FALL SEMESTERS, 2007-2016

Year	2007	2008	2009	2010	2011	2012	2013	2014	2015	2016
Nursing										
New Students	6	11	19	18	11	0	0	1	0	0
Continuing Students	15	19	21	29	34	11	0	0	0	1
Family Nursing										
New Students	12	13	13	15	31	15	0	0	0	3
Continuing Students	25	25	21	28	40	16	8	1	0	0
Family Nursing NP										
New Students	N/A	N/A	N/A	N/A	N/A	36	42	28	24	38
Continuing Students	N/A	N/A	N/A	N/A	N/A	60	89	76	58	54
Family Nurse Practitioner - Certificate										
New Students	3	1	3	7	2	1	1	0	3	3
Continuing Students	4	5	3	15	6	4	4	3	2	3
Adult Gerontological Nursing										
New Students	N/A	N/A	N/A	N/A	N/A	N/A	N/A	N/A	N/A	0
Continuing Students	N/A	N/A	N/A	N/A	N/A	N/A	N/A	N/A	N/A	5
Adult Gerontological Nurse Practitioner										
New Students	N/A	N/A	N/A	N/A	N/A	N/A	N/A	N/A	N/A	2
Continuing Students	N/A	N/A	N/A	N/A	N/A	N/A	N/A	N/A	N/A	5
Gerontology Nursing										
New Students	2	1	1	2	0	0	0	0	3	0
Continuing Students	2	3	2	3	3	1	1	1	1	0
Gerontology Nurse Practitioner										
New Students	1	0	0	0	0	0	4	3	2	0
Continuing Students	0	1	0	0	0	0	0	3	6	0
Gerontology Nurse Practitioner-Certificate										
New Students	N/A	N/A	N/A	N/A	N/A	N/A	N/A	0	1	0
Continuing Students	N/A	N/A	N/A	N/A	N/A	N/A	N/A	1	1	0
Community Health										
New Students	3	0	1	0	4	2	0	0	0	1
Continuing Students	8	4	3	2	4	7	7	5	4	2
Community Health NP										
New Students	N/A	N/A	N/A	N/A	N/A	1	1	3	1	1
Continuing Students	N/A	N/A	N/A	N/A	N/A	4	5	3	4	4
Community Health/Primary Care NP - Certificate										
New Students	1	0	0	0	0	0	0	1	0	0
Continuing Students	2	2	3	4	2	1	0	0	1	0
Psych Nursing										
New Students	N/A	N/A	N/A	N/A	N/A	N/A	N/A	N/A	0	0
Continuing Students	N/A	N/A	N/A	N/A	N/A	N/A	N/A	N/A	1	0
Psych Mental Health Nursing NP										
New Students	N/A	N/A	N/A	0	4	3	4	6	7	25
Continuing Students	N/A	N/A	N/A	4	0	7	7	8	14	15

TABLE 3.8. GRADUATE ENROLLMENT IN DECKER SCHOOL OF NURSING FOR FALL SEMESTERS, 2007-2016 (CONT'D)

Year	2007	2008	2009	2010	2011	2012	2013	2014	2015	2016
Psych Mental Health Nursing NP – Certificate										
New Students	N/A	N/A	N/A	1	1	1	1	1	7	4
Continuing Students	N/A	N/A	N/A	3	2	4	7	6	3	9
Disaster Management - Certificate										
New Students	N/A	N/A	N/A	N/A	N/A	N/A	N/A	N/A	N/A	1
Continuing Students	N/A	N/A	N/A	N/A	N/A	N/A	N/A	N/A	N/A	0
Nursing Education - Certificate										
New Students	N/A	N/A	N/A	0	0	0	0	0	0	1
Continuing Students	N/A	N/A	N/A	1	0	0	0	1	1	0
Forensic Health - Certificate										
New Students	N/A	N/A	N/A	N/A	N/A	N/A	0	0	0	1
Continuing Students	N/A	N/A	N/A	N/A	N/A	N/A	1	0	0	1
Total	84	85	90	132	144	174	182	151	144	179
<i>% Change from Previous Year</i>	40%	1.2%	5.9%	46.7%	9.1%	20.8%	4.6%	-17%	-4.6%	24.3%
DOCTOR OF NURSING PRACTICE										
Community Health NP										
New Students	N/A	N/A	N/A	N/A	0	0	1	0	1	1
Continuing Students	N/A	N/A	N/A	N/A	1	1	0	3	3	3
Community Health Clinical Nursing Specialist										
New Students	N/A	N/A	N/A	N/A	0	0	1	0	0	0
Continuing Students	N/A	N/A	N/A	N/A	1	1	0	0	0	0
Family NP										
New Students	N/A	N/A	N/A	N/A	1	1	0	0	0	0
Continuing Students	N/A	N/A	N/A	N/A	7	4	10	11	9	6
Family Psych Mental Health NP										
New Students	N/A	N/A	N/A	N/A	N/A	0	0	0	1	0
Continuing Students	N/A	N/A	N/A	N/A	N/A	2	3	1	2	2
Gerontological NP										
New Students	N/A	N/A	N/A	N/A	0	1	0	0	0	0
Continuing Students	N/A	N/A	N/A	N/A	1	1	2	0	0	0
Gerontological Clinical Nursing Specialist										
New Students	N/A	N/A	N/A	N/A	N/A	0	0	0	0	0
Continuing Students	N/A	N/A	N/A	N/A	N/A	1	1	1	0	0
Total	0	0	0	0	11	12	18	16	16	12
<i>% Change from Previous Year</i>	N/A	N/A	N/A	N/A	N/A	9.1%	50%	-11.1%	0%	-25%
Nursing - PhD										
New Students	3	3	5	2	1	2	4	3	1	5
Continuing Students	26	28	23	25	30	29	29	32	29	20
Total	29	31	28	27	31	31	33	35	30	25
<i>% Change from Previous Year</i>	16%	6.9%	-9.7%	-3.6%	14.8%	0%	6.5%	6.1%	-14.3%	-16.7%

TABLE 3.9. GRADUATE ENROLLMENT IN COLLEGE OF COMMUNITY AND PUBLIC AFFAIRS FOR FALL SEMESTERS, 2007-2016

Year	2007	2008	2009	2010	2011	2012	2013	2014	2015	2016
PUBLIC ADMINISTRATION										
New Students	21	26	24	24	22	16	27	19	37	56
Continuing Students	54	55	60	62	48	46	35	39	50	70
Total	75	81	84	86	70	62	62	58	87	126
<i>% Change from Previous Year</i>	-5.1%	8%	3.7%	2.4%	-18.6%	-11.4%	0%	-6.5%	50%	44.8%
COMMUNITY AND PUBLIC AFFAIRS										
New Students	N/A	N/A	N/A	N/A	N/A	N/A	5	8	3	8
Continuing Students	N/A	N/A	N/A	N/A	N/A	N/A	5	16	24	24
Total	N/A	N/A	N/A	N/A	N/A	N/A	10	24	27	32
<i>% Change from Previous Year</i>	N/A	N/A	N/A	N/A	N/A	N/A	N/A	140%	12.5%	18.5%
SOCIAL SCIENCE										
New Students	17	11	0	0	0	N/A	N/A	N/A	N/A	N/A
Continuing Students	28	35	5	1	0	N/A	N/A	N/A	N/A	N/A
Total	45	46	5	1	0	N/A	N/A	N/A	N/A	N/A
<i>% Change from Previous Year</i>	-45.8%	2.2%	-89.1%	-80%	-100%	N/A	N/A	N/A	N/A	N/A
SOCIAL WORK										
New Students	55	56	51	49	47	57	64	61	83	71
Continuing Students	70	86	82	94	88	80	79	81	76	97
Total	125	142	133	143	135	137	143	142	159	168
<i>% Change from Previous Year</i>	-3.8%	13.6%	-6.3%	7.5%	-5.6%	1.5%	4.4%	-0.7%	12%	5.7%
STUDENT AFFAIRS ADMINISTRATION										
New Students	N/A	N/A	6	20	9	17	17	19	12	29
Continuing Students	N/A	N/A	28	24	29	24	32	21	25	16
Total	N/A	N/A	34	44	38	41	49	40	37	45
<i>% Change from Previous Year</i>	N/A	N/A	N/A	29.4%	-13.6%	7.9%	19.5%	-18.4%	-7.5%	21.6%

TABLE 3.10. GRADUATE ENROLLMENT IN GRADUATE SCHOOL - INTERDISCIPLINARY PROGRAMS FOR FALL SEMESTERS, 2007-2016

Year	2007	2008	2009	2010	2011	2012	2013	2014	2015	2016
MATERIALS SCIENCE AND ENGINEERING										
MS										
New Students	N/A	N/A	N/A	N/A	1	2	1	8	6	3
Continuing Students	N/A	N/A	N/A	N/A	1	3	1	2	9	7
PhD										
New Students	N/A	N/A	N/A	4	4	9	3	6	5	6
Continuing Students	N/A	N/A	N/A	33	28	29	28	29	26	32
SUSTAINABLE COMMUNITIES										
MA										
New Students	N/A	N/A	N/A	N/A	N/A	N/A	N/A	N/A	N/A	3
Continuing Students	N/A	N/A	N/A	N/A	N/A	N/A	N/A	N/A	N/A	0
MS										
New Students	N/A	N/A	N/A	N/A	N/A	N/A	N/A	N/A	N/A	3
Continuing Students	N/A	N/A	N/A	N/A	N/A	N/A	N/A	N/A	N/A	0
Total	N/A	N/A	N/A	37	34	43	33	45	46	54
<i>% Change from Previous Year</i>	<i>N/A</i>	<i>N/A</i>	<i>N/A</i>	<i>N/A</i>	<i>-8.1%</i>	<i>26.5%</i>	<i>-23.3%</i>	<i>36.4%</i>	<i>2.2%</i>	<i>17.4%</i>

TABLE 3.11. INTERNATIONAL GRADUATE ENROLLMENT FOR FALL SEMESTERS, 2007-2016

Year	2007	2008	2009	2010	2011	2012	2013	2014	2015	2016
Total University Enrollment	2,920	3,100	3,056	3,138	2,948	2,974	3,079	3,287	3,431	3,649
Total Full-Time Enrollment	1,703	1,786	1,831	1,869	1,570	1,527	1,784	1,924	2,036	2,095
International Enrollment	929	1048	986	944	882	915	1,090	1,337	1,461	1,533
<i>% Change from Previous Year</i>	<i>15.5%</i>	<i>12.8%</i>	<i>-5.9%</i>	<i>-4.3%</i>	<i>-6.6%</i>	<i>3.7%</i>	<i>19.1%</i>	<i>22.7%</i>	<i>9.3%</i>	<i>4.9%</i>
<i>% of Total University</i>	<i>32%</i>	<i>34%</i>	<i>32%</i>	<i>30%</i>	<i>30%</i>	<i>31%</i>	<i>35%</i>	<i>41%</i>	<i>43%</i>	<i>42%</i>
International Full-Time Enroll	705	757	707	643	508	535	698	901	1,032	1,003
<i>% of Total Full-Time</i>	<i>41%</i>	<i>42%</i>	<i>39%</i>	<i>34%</i>	<i>32%</i>	<i>35%</i>	<i>39%</i>	<i>47%</i>	<i>51%</i>	<i>48%</i>

FIGURE 3.2. GRADUATE ENROLLMENT FOR FALL SEMESTERS, 2007-2016

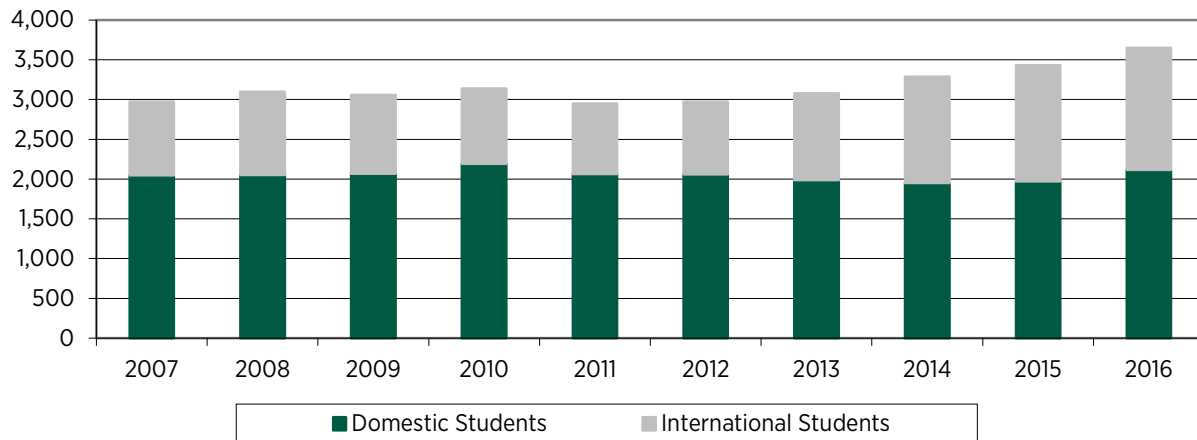


TABLE 3.12. INTERNATIONAL GRADUATE ENROLLMENT BY SCHOOL FOR FALL SEMESTERS, 2007-2016

Year	2007	2008	2009	2010	2011	2012	2013	2014	2015	2016
HARPUR COLLEGE OF ARTS & SCIENCES										
Total	329	346	343	325	338	337	341	372	402	402
<i>% of International Students</i>	31.4%	35.1%	36.3%	36.8%	36.9%	30.9%	25.5%	25.5%	27.5%	26.2%
WATSON SCHOOL OF ENGINEERING										
Total	445	485	474	454	395	401	513	696	800	854
<i>% of International Students</i>	42%	49%	50%	51%	43%	37%	38%	48%	55%	56%
SCHOOL OF MANAGEMENT										
Total	128	161	145	115	84	99	157	188	183	182
<i>% of International Students</i>	12%	16%	15%	13%	9%	9%	12%	13%	13%	12%
SCHOOL OF EDUCATION										
Total	4	5	6	4	7	8	7	8	6	5
<i>% of International Students</i>	0.4%	0.5%	0.6%	0.5%	0.8%	0.7%	0.5%	0.5%	0.4%	0.3%
DECKER SCHOOL OF NURSING										
Total	9	9	5	2	7	11	15	14	10	14
<i>% of International Students</i>	0.9%	0.9%	0.5%	0.2%	0.8%	1%	1.1%	1%	0.7%	0.9%
COLLEGE OF COMMUNITY AND PUBLIC AFFAIRS										
Total	4	7	8	11	19	18	15	12	16	24
<i>% of International Students</i>	0.4%	0.7%	0.8%	1.2%	2.1%	1.7%	1.1%	0.8%	1.1%	1.6%
GRADUATE SCHOOL										
Total	N/A	N/A	N/A	26	26	31	25	36	38	38
<i>% of International Students</i>	N/A	N/A	N/A	2.9%	2.8%	2.8%	1.9%	2.5%	2.6%	2.5%
NON-DEGREE										
Total	10	35	5	7	6	10	17	11	6	14
<i>% of International Students</i>	1%	3.5%	0.5%	0.8%	0.7%	0.9%	1.3%	0.8%	0.4%	0.9%

