

TABLE 4
FEE-PAID DEGREE APPLICATIONS BY PROGRAM
FOR ACADEMIC YEARS, 2000-2001 THROUGH 2010-2011 (CONT.)

	02-03	03-04	04-05	05-06	06-07	07-08	08-09	09-10	10-11	11-12	% Change
Harpur College of Arts and Sciences											
Anthropology	89	85	89	80	105	97	98	90	84	109	30%
Art History	19	28	33	21	29	27	28	35	35	35	0%
Biology	70	71	50	47	64	85	75	114	107	126	18%
Chemistry	52	52	44	28	41	52	70	43	41	44	7%
Comparative Literature	42	47	54	48	46	46	42	29	37	32	-14%
Economics	220	186	160	150	133	134	149	147	156	150	-4%
English	101	128	141	158	147	133	112	121	144	104	-28%
Geography	27	21	19	19	25	27	24	25	41	31	-24%
Geological Sciences	19	22	32	23	20	24	22	13	26	26	0%
History	70	76	80	87	87	91	86	86	92	75	-18%
Materials Science	4	16	16	18	12	19	28	15	14	N/A	N/A
Mathematics	53	59	52	75	67	84	62	85	83	88	6%
Music	29	33	34	34	20	36	33	35	33	43	30%
Philosophy - SPEL	18	15	28	22	31	43	58	50	45	34	-24%
Philosophy - PIC	33	34	35	45	45	33	37	38	31	17	-45%
Physics	8	9	8	11	7	9	12	18	22	17	-23%
Political Science	35	44	53	65	58	73	56	56	45	52	16%
Psychology - Neuroscience	26	29	26	22	21	38	32	25	27	25	-7%
Psychology - Clinical	126	170	179	212	218	213	199	212	243	213	-12%
Psychology - Cognitive	29	24	22	25	24	18	25	17	25	25	0%
Romance Languages	13	15	18	12	13	13	10	12	11	1	-91%
Sociology	62	58	67	48	56	50	57	44	46	42	-9%
Theater	10	5	15	21	10	15	7	11	7	12	71%
Translation Studies - PhD	3	N/A	13	18	19	16	16	22	18	23	28%
Total Applications	1158	1227	1268	1289	1298	1376	1338	1343	1413	1324	
<i>% Change</i>	6%	6%	3%	2%	1%	6%	-3%	0%	5%	-6%	
Graduate School											
CERT - Professional Science Management	N/A	N/A	N/A	N/A	N/A	N/A	N/A	N/A	N/A	1	N/A
Master's - MSE	N/A	N/A	N/A	N/A	N/A	N/A	N/A	N/A	1	13	1200%
PhD - MSE	N/A	N/A	N/A	N/A	N/A	N/A	N/A	N/A	11	14	27%
Total Applications	N/A	N/A	N/A	N/A	N/A	N/A	N/A	N/A	12	28	
<i>% Change</i>	N/A	N/A	N/A	N/A	N/A	N/A	N/A	N/A	N/A	133%	

TABLE 5
AVERAGE GRE PERCENTILE SCORES FOR ALL SCHOOLS FOR FALL SEMESTERS, 2003-2012

All Fee-Paid Degree Applicants	All Applicants			Offered Admission			Enrolled		
	V	Q	A	V	Q	A	V	Q	A
2003	60	67	63	60	62	62	57	60	63
2004	60	63	52	61	61	52	56	54	49
2005	58	62	49	58	61	48	56	56	48
2006	57	59	44	58	60	44	57	53	46
2007	55	64	40	56	64	41	54	59	42
2008 (est.)	54	67	36	55	66	38	54	60	41
2009	53	68	36	53	71	35	53	61	39
2010	55	67	36	55	70	34	54	65	38
2011	56	68	35	56	71	33	58	63	39
2012	56	69	37	55	72	35	55	66	40

○ APPPLICANTS
 ○ ADMITS
 ○ ENROLLED

FIGURE 8
AVERAGE GRE VERBAL PERCENTILES OF APPLICANTS, ADMITTEES AND ENROLLEES

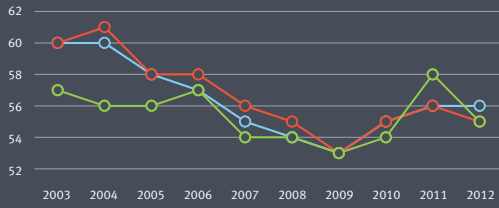


FIGURE 9
AVERAGE GRE QUANTITATIVE PERCENTILES OF APPLICANTS, ADMITTEES AND ENROLLEES

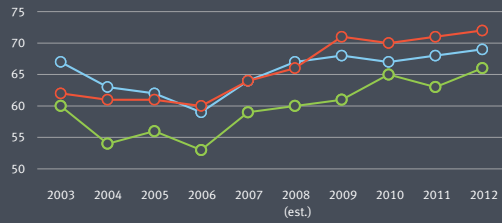


FIGURE 10
AVERAGE GRE ANALYTICAL PERCENTILES OF APPLICANTS, ADMITTEES AND ENROLLEES

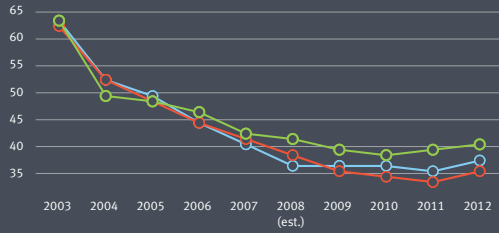


FIGURE 11
HARPUR COLLEGE (SOCIAL SCIENCES)
AVERAGE GRE PERCENTILES FOR ENROLLED STUDENTS

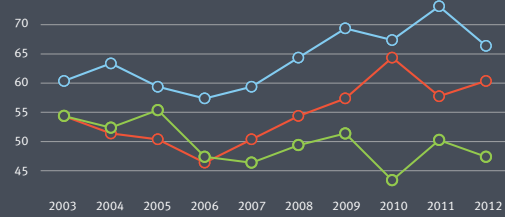


FIGURE 12
HARPUR COLLEGE (HUMANITIES)
AVERAGE GRE PERCENTILES FOR ENROLLED STUDENTS

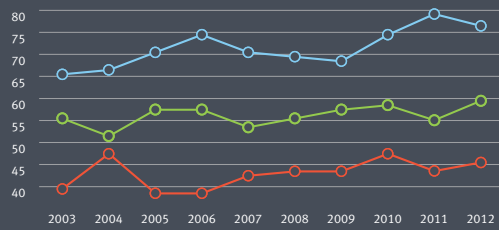


FIGURE 13
HARPUR COLLEGE (MATHS & SCIENCES)
AVERAGE GRE PERCENTILES FOR ENROLLED STUDENTS

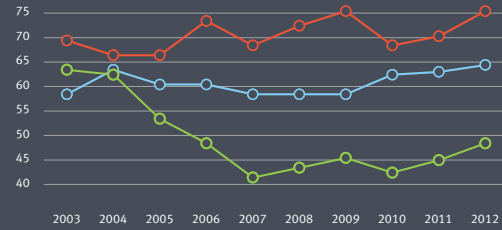


FIGURE 14
DECKER SCHOOL OF NURSING
AVERAGE GRE PERCENTILES FOR ENROLLED STUDENTS

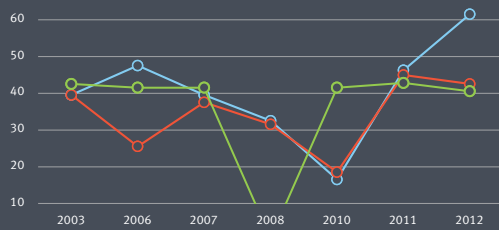


FIGURE 15
WATSON SCHOOL OF ENGINEERING AND APPLIED SCIENCE
AVERAGE GRE PERCENTILES FOR ENROLLED STUDENTS

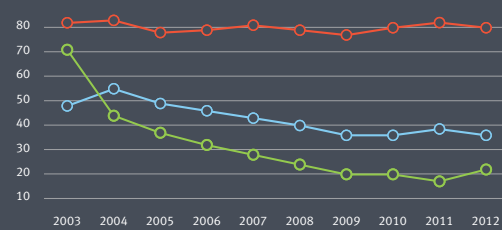


FIGURE 16
GRADUATE SCHOOL OF EDUCATION
AVERAGE GRE PERCENTILES FOR ENROLLED STUDENTS

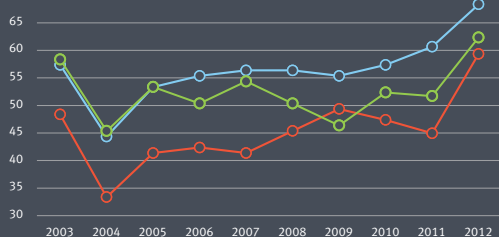


FIGURE 17
COLLEGE OF COMMUNITY AND PUBLIC AFFAIRS
AVERAGE GRE PERCENTILES FOR ENROLLED STUDENTS

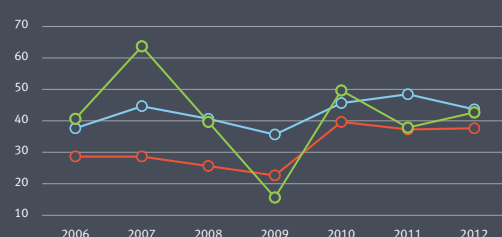


TABLE 6

AVERAGE GRE PERCENTILE SCORES BY SCHOOL FOR FALL SEMESTER, 2003-2012

**HARPUR COLLEGE
OF ARTS AND SCIENCE**

	All Applicants			Offered Admission			Enrolled		
	V	Q	A	V	Q	A	V	Q	A
Social Sciences									
2003	68	66	69	66	61	63	60	54	54
2004	63	61	53	65	58	53	63	51	52
2005	60	60	49	60	58	51	59	50	55
2006	62	57	47	63	55	49	57	46	47
2007	60	59	44	63	56	47	59	50	46
2008	60	62	41	67	51	60	64	54	49
2009	60	63	42	65	66	47	69	57	51
2010	60	63	42	66	67	46	67	64	43
2011	65	63	41	73	65	49	73	57	50
2012	63	65	42	68	66	46	66	60	47
Humanities									
2003	69	45	55	70	44	56	65	39	55
2004	69	48	57	72	48	59	66	47	51
2005	69	41	58	70	41	61	70	38	57
2006	69	41	58	74	41	59	74	38	57
2007	71	44	54	73	44	58	70	42	53
2008	71	54	53	77	45	60	69	43	55
2009	74	50	56	75	50	60	68	43	57
2010	60	63	42	81	49	33	74	47	58
2011	75	49	56	80	47	56	79	43	55
2012	71	48	55	76	50	57	76	45	59
Maths & Sciences									
2003	63	63	63	60	72	65	58	69	63
2004	61	64	56	64	71	56	63	66	62
2005	63	62	56	59	69	51	60	66	53
2006	63	61	52	61	70	45	60	73	48
2007	63	67	50	61	71	45	58	68	41
2008	61	67	44	58	72	41	58	72	43
2009	62	68	49	58	74	43	58	75	45
2010	64	68	46	64	70	41	62	68	42
2011	66	67	48	69	72	49	63	70	45
2012	66	69	51	65	78	48	64	75	48

**DECKER SCHOOL
OF NURSING**

2003	41	35	44	41	35	44	39	39	42
2004	24	30	37	25	14	47	0	0	0
2005	45	46	38	45	34	32	0	0	0
2006	56	39	38	61	32	42	47	25	41
2007	45	34	42	43	34	44	39	37	41
2008	42	46	30	39	48	32	32	31	0
2009	N/A	N/A	N/A	N/A	N/A	N/A	N/A	N/A	N/A
2010	51	36	28	48	19	41	16	18	41
2011	53	49	43	53	49	43	46	44	42
2012	68	47	31	59	34	32	61	42	40

WATSON SCHOOL OF ENGINEERING

2003	62	86	75	62	86	76	47	81	70
2004	58	83	48	60	83	50	54	82	43
2005	49	78	36	50	79	35	48	77	36
2006	44	78	28	46	78	29	45	78	31
2007	43	80	26	45	80	27	42	80	27
2008	42	81	22	43	81	22	39	78	23
2009	37	81	19	41	82	21	35	76	19
2010	37	80	17	41	82	19	35	79	19
2011	40	80	16	41	82	17	38	81	16
2012	40	80	20	42	81	21	35	79	21

SCHOOL OF EDUCATION

2003	57	47	54	59	49	58	57	48	58
2004	47	34	46	47	35	46	44	33	45
2005	52	39	49	55	41	54	53	41	53
2006	52	39	44	56	43	49	55	42	50
2007	53	10	49	56	44	54	56	41	54
2008	54	44	47	54	44	49	56	45	50
2009	52	45	44	57	47	46	55	49	46
2010	52	47	43	58	47	49	57	47	52
2011	58	48	46	59	46	49	60	45	51
2012	57	54	48	62	54	53	68	59	62

COLLEGE OF COMMUNITY AND PUBLIC AFFAIRS

2006	41	36	41	42	37	42	37	28	40
2007	44	34	45	45	34	53	44	28	63
2008	48	45	40	54	43	50	40	25	39
2009	40	45	30	43	30	32	35	22	15
2010	54	54	36	53	54	36	45	39	49
2011	56	58	41	63	55	38	48	37	37
2012	48	55	36	52	53	39	43	37	42

GRADUATE SCHOOL

2010	47	86	24	57	83	23	57	83	23
2011	51	89	17	44	86	12	41	85	12
2012	49	83	28	61	84	37	54	89	29

TABLE 7
AVERAGE TOTAL GMAT SCORES FOR FALL SEMESTERS, 2003-2012 (SCHOOL OF MANAGEMENT)

	All Applicants		Offered Admission		Enrolled	
	Total Score	Percentile	Total Score	Percentile	Total Score	Percentile
2003	589	66	615	73	617	68
2004	575	64	606	71	613	67
2005	575	60	598	67	600	62
2006	560	57	588	66	614	67
2007	591	66	612	71	620	69
2008	603	67	622	73	624	70
2009	616	70	630	74	629	72
2010	600	64	607	63	643	74
2011	597	62	599	63	639	73
2012	636	72	648	77	630	71

FIGURE 18
AVERAGE GMAT SCORES OF APPLICANTS, ADMITEES AND ENROLLEES, FALL 2003-2012

