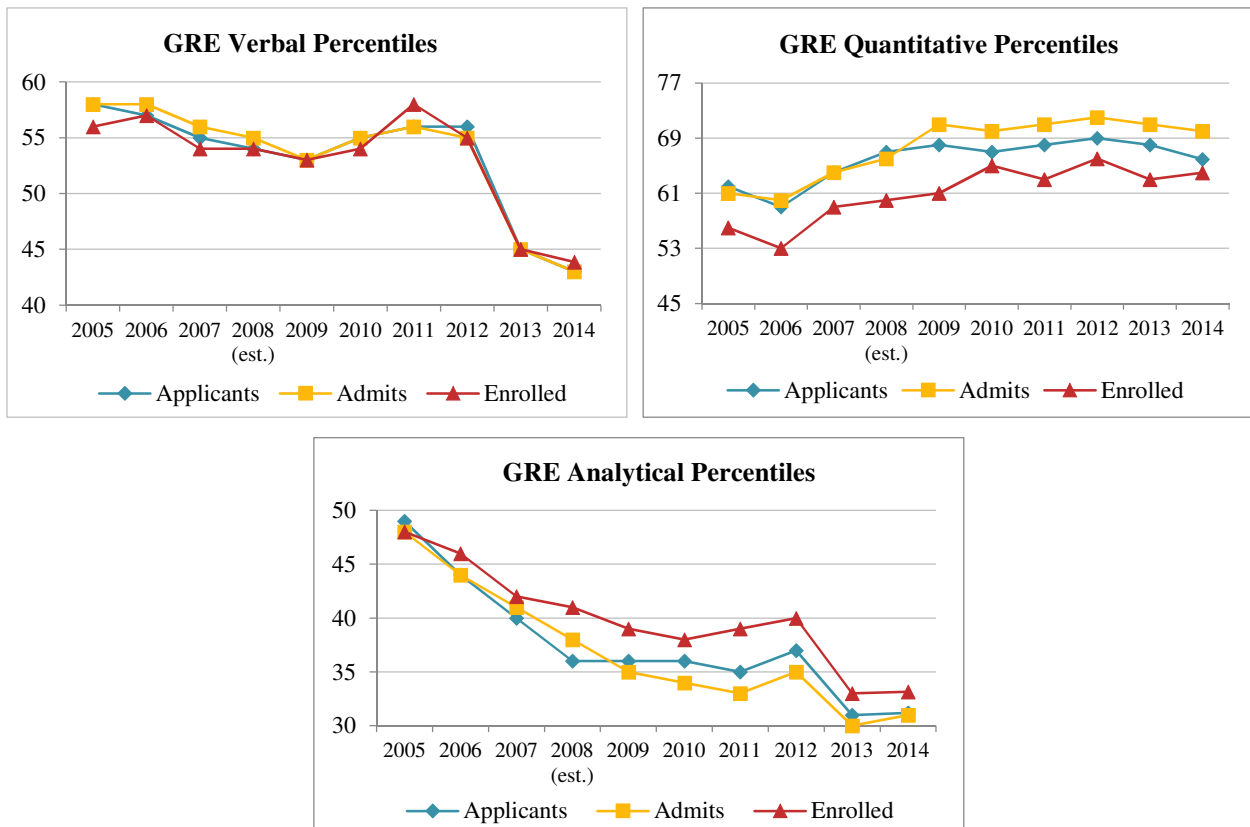


2. Test Scores

Table 2.1. Average GRE Percentile Scores for All Schools for Fall Semesters, 2005-2014

Year	All Applicants			Offered Admission			Enrolled		
	V	Q	A	V	Q	A	V	Q	A
2005	58	62	49	58	61	48	56	56	48
2006	57	59	44	58	60	44	57	53	46
2007	55	64	40	56	64	41	54	59	42
2008 (est.)	54	67	36	55	66	38	54	60	41
2009	53	68	36	53	71	35	53	61	39
2010	55	67	36	55	70	34	54	65	38
2011	56	68	35	56	71	33	58	63	39
2012	56	69	37	55	72	35	55	66	40
2013	45	68	31	45	71	30	45	63	33
2014	43	66	31	43	70	31	44	64	33

Figure 2.1. Average GRE Percentiles of Applicants, Admittees and Enrollees, Fall 2005-2014



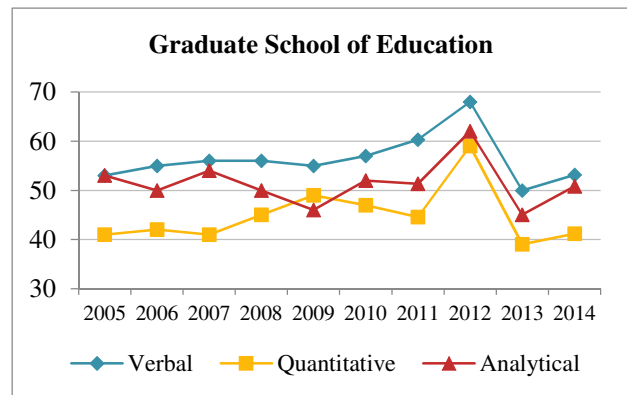
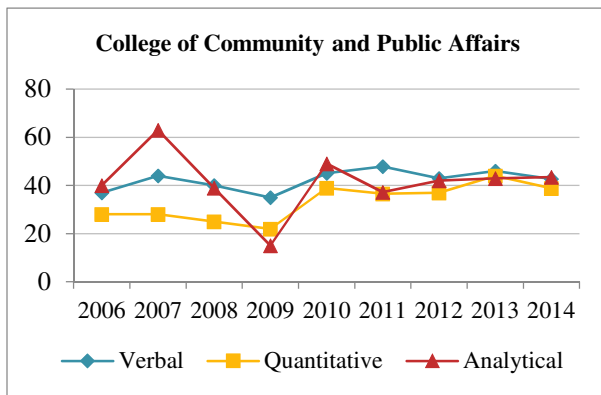
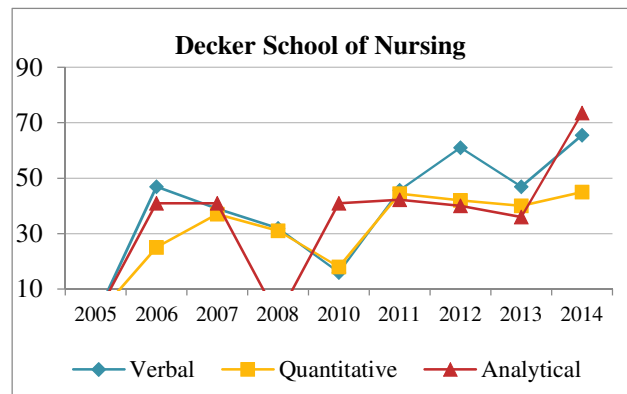
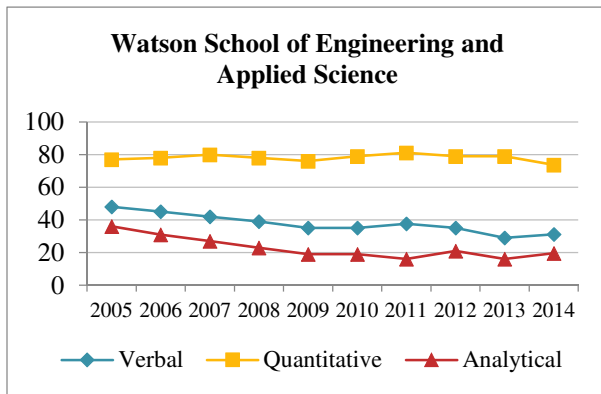
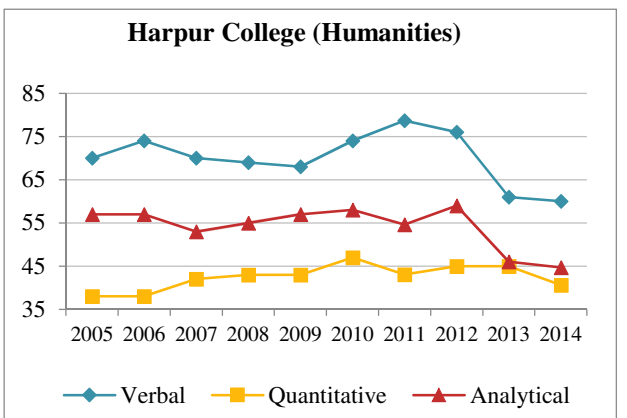
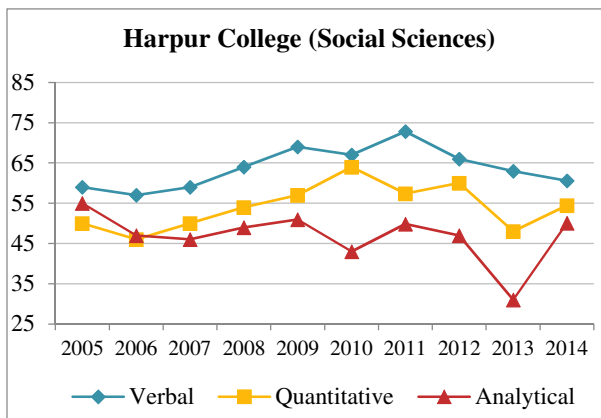


Figure 2.2. Average GRE Percentiles for Enrolled Students in Fall 2005-2014 by



School/Program

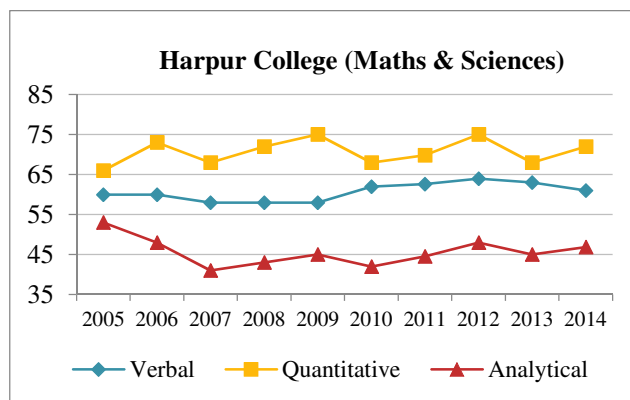


Table 2.2. Average GRE Percentile Scores by School for Fall Semesters, 2005-2014

	All Applicants			Offered Admission			Enrolled		
	V	Q	A	V	Q	A	V	Q	A
Harpur College of Arts and Sciences									
Social Sciences									
2005	60	60	49	60	58	51	59	50	55
2006	62	57	47	63	55	49	57	46	47
2007	60	59	44	63	56	47	59	50	46
2008	60	62	41	67	51	60	64	54	49
2009	60	63	42	65	66	47	69	57	51
2010	60	63	42	66	67	46	67	64	43
2011	65	63	41	73	65	49	73	57	50
2012	63	65	42	68	66	46	66	60	47
2013	59	58	43	63	60	46	63	48	31
2014	57	59	44	61	63	48	61	54	50
Humanities									
2005	69	41	58	70	41	61	70	38	57
2006	69	41	58	74	41	59	74	38	57
2007	71	44	54	73	44	58	70	42	53
2008	71	54	53	77	45	60	69	43	55
2009	74	50	56	75	50	60	68	43	57
2010	60	63	42	81	49	33	74	47	58
2011	75	49	56	80	47	56	79	43	55
2012	71	48	55	76	50	57	76	45	59
2013	65	46	53	67	48	52	61	45	46
2014	65	42	52	68	44	54	60	41	45
Maths & Sciences									
2005	63	62	56	59	69	51	60	66	53
2006	63	61	52	61	70	45	60	73	48
2007	63	67	50	61	71	45	58	68	41
2008	61	67	44	58	72	41	58	72	43
2009	62	68	49	58	74	43	58	75	45
2010	64	68	46	64	70	41	62	68	42
2011	66	67	48	69	72	49	63	70	45
2012	66	69	51	65	78	48	64	75	48
2013	63	67	51	61	73	45	63	68	45
2014	60	64	49	59	76	43	61	72	47

Table 2.2. Average GRE Percentile Scores by School for Fall Semesters, 2005-2014 (Cont'd)

	All Applicants			Offered Admission			Enrolled		
	V	Q	A	V	Q	A	V	Q	A
Decker School of Nursing									
2005	45	46	38	45	34	32	0	0	0
2006	56	39	38	61	32	42	47	25	41
2007	45	34	42	43	34	44	39	37	41
2008	42	46	30	39	48	32	32	31	0
2009	N/A	N/A	N/A	N/A	N/A	N/A	N/A	N/A	N/A
2010	51	36	28	48	19	41	16	18	41
2011	53	49	43	53	49	43	46	44	42
2012	68	47	31	59	34	32	61	42	40
2013	47	34	38	47	34	38	47	40	36
2014	49	47	44	48	44	39	66	45	74
Watson School of Engineering									
2005	49	78	36	50	79	35	48	77	36
2006	44	78	28	46	78	29	45	78	31
2007	43	80	26	45	80	27	42	80	27
2008	42	81	22	43	81	22	39	78	23
2009	37	81	19	41	82	21	35	76	19
2010	37	80	17	41	82	19	35	79	19
2011	40	80	16	41	82	17	38	81	16
2012	40	80	20	42	81	21	35	79	21
2013	30	77	17	33	81	18	29	79	16
2014	30	73	19	32	77	20	31	74	20
School of Education									
2005	52	39	49	55	41	54	53	41	53
2006	52	39	44	56	43	49	55	42	50
2007	53	10	49	56	44	54	56	41	54
2008	54	44	47	54	44	49	56	45	50
2009	52	45	44	57	47	46	55	49	46
2010	52	47	43	58	47	49	57	47	52
2011	58	48	46	59	46	49	60	45	51
2012	57	54	48	62	54	53	68	59	62
2013	51	48	44	57	47	50	50	39	45
2014	50	44	45	55	43	53	53	41	51
Graduate School									
2010	47	86	24	57	83	23	57	83	23
2011	51	89	17	44	86	12	41	85	12
2012	49	83	28	61	84	37	54	89	29
2013	39	86	19	47	89	25	44	81	21
2014	39	84	20	43	87	23	43	83	27

Table 2.2. Average GRE Percentile Scores by School for Fall Semesters, 2005-2014 (Cont'd)

	All Applicants			Offered Admission			Enrolled		
	V	Q	A	V	Q	A	V	Q	A
College of Community and Public Affairs									
2006	41	36	41	42	37	42	37	28	40
2007	44	34	45	45	34	53	44	28	63
2008	48	45	40	54	43	50	40	25	39
2009	40	45	30	43	30	32	35	22	15
2010	54	54	36	53	54	36	45	39	49
2011	56	58	41	63	55	38	48	37	37
2012	48	55	36	52	53	39	43	37	42
2013	41	64	28	47	59	34	46	44	43
2014	41	61	32	48	57	40	43	39	43

Table 2.3. Average Total GMAT Scores for Fall Semesters, 2004-2014

	All Applicants		Offered Admission		Enrolled	
	Total Score	Percentile	Total Score	Percentile	Total Score	Percentile
School of Management						
2005	575	60	598	67	600	62
2006	560	57	588	66	614	67
2007	591	66	612	71	620	69
2008	603	67	622	73	624	70
2009	616	70	630	74	629	72
2010	600	64	607	63	643	74
2011	597	62	599	63	639	73
2012	636	72	648	77	630	71
2013	637	72	652	78	630	71
2014	635	72	647	76	625	69

Figure 2.3. Average GMAT Scores of Applicants, Admittees and Enrollees, Fall 2005-2014

