



2015 ANNUAL REPORT

BINGHAMTON
UNIVERSITY

THE GRADUATE SCHOOL

TABLE OF CONTENTS

PARTS

1. Applications and Admissions	4
2. Test Scores	8
3. Graduate Enrollment	14
4. Degrees Conferred	31
5. Time to Degree	41
6. Financial Support	49

TABLES

Table 1.1. Degree Applications for Academic Years, 2010-2011 through 2014-2015	4
Table 1.2. Fee-Paid Applications by School for Academic Years, 2010-2011 through 2014-2015	6
Table 2.1. Average GRE Percentiles for Fall Semesters, 2005-2014	8
Table 2.2. Average GRE Percentiles by School for Fall Semesters, 2005-2014	9
Table 2.3. Average Total GMAT Scores for Fall Semesters, 2005-2014	13
Table 3.1. Total Graduate Enrollment by Gender for Fall Semesters, 2005-2014	14
Table 3.2. Total Graduate Enrollment by Ethnicity and Gender for Fall Semesters, 2010-2014	14
Table 3.3. Graduate Enrollment by School for Fall Semesters, 2005-2014	15
Table 3.4. Graduate Enrollment In Harpur College of Arts & Sciences for Fall Semesters, 2005-2014	16
Table 3.5. Graduate Enrollment In Watson School of Engineering for Fall Semesters, 2005-2014	20
Table 3.6. Graduate Enrollment In Graduate School of Education for Fall Semesters, 2005-2014	22
Table 3.7. Graduate Enrollment In School of Management for Fall Semesters, 2005-2014	24
Table 3.8. Graduate Enrollment In Decker School of Nursing for Fall Semesters, 2005-2014	26
Table 3.9. Graduate Enrollment In College of Community and Public Affairs for Fall Semesters, 2005-2014	28
Table 3.10. Graduate Enrollment In Graduate School Materials Science and Engineering for Fall Semesters, 2005-2014	29
Table 3.11. International Graduate Enrollment for Fall Semesters, 2005-2014	29
Table 3.12. International Graduate Enrollment by School for Fall Semesters, 2005-2014	30
Table 4.1. Graduate Degrees Conferred for Academic Years, 2005-2006 through 2014-2015	31
Table 4.2. Graduate Degrees Conferred for Academic Years by Degree, 2005-2006 through 2014-2015	31
Table 4.3. Master of Science (MS) Degrees Conferred for Academic Years, 2005-2006 through 2014-2015	32
Table 4.4. Master of Arts (MA) Degrees Conferred for Academic Years, 2005-2006 through 2014-2015	33
Table 4.5. Doctoral Degrees Conferred In 2014-2015 and Cumulative Degrees by Program	34
Table 4.6. Graduate Degrees Conferred In College of Community and Public Affairs for Academic Years, 2005-2006 through 2014-2015	35
Table 4.7. Graduate Degrees Conferred In Graduate School of Education for Academic Years, 2005-2006 through 2014-2015	35

Table 4.8. Graduate Degrees Conferred In Graduate School - Materials Science and Engineering for Academic Years 2005-2006 through 2014-2015	35
Table 4.9. Graduate Degrees Conferred In Harpur College of Arts and Sciences for Academic Years, 2005-2006 through 2014-2015	36
Table 4.10. Graduate Degrees Conferred In School of Management for Academic Years, 2005-2006 through 2014-2015	38
Table 4.11. Graduate Degrees Conferred In Decker School of Nursing for Academic Years, 2005-2006 through 2014-2015	38
Table 4.12. Graduate Degrees Conferred In Watson School of Engineering for Academic Years, 2005-2006 through 2014-2015	39
Table 4.13. Graduate Degrees Conferred by Demographic Category for Academic Years, 2010-2011 through 2014-2015	40
Table 5.1. Average Time to Terminal Master's Degree by Program for Academic Years, 2010-2011 through 2014-2015	41
Table 5.2. Average Time to Doctoral Degree by Program for Academic Years, 2010-2011 through 2014-2015	44
Table 5.3. Outcomes of Doctoral Students by Year In Program (Kaplan-Meier Method) for Academic Years, 2004-2015	47
Table 6.1. Financial Support for Fall Semesters for Academic Years, 2010-2014	49
Table 6.2. Doctoral Students by Type of Funding, Fall 2014	50
Table 6.3. Master's Students by Type of Funding, Fall 2014	53

FIGURES

Figure 1.1. Application to Enrollment Profile for Academic Years, 2010-2011 through 2014-2015	4
Figure 1.2. Fee-Paid Applications By School for Academic Years, 2010-2011 through 2014-2015	7
Figure 2.1. Average GRE Percentiles of Applicants, Admittees and Enrollees for Fall Semesters, 2005-2014	8
Figure 2.2. Average GRE Percentiles for New Enrolled Students By School for Fall Semesters, 2005-2014	12
Figure 2.3. Average GMAT Scores of Applicants, Admittees and Enrollees for Fall Semesters, 2005-2014	13
Figure 3.1. Total Graduate Enrollment by Ethnicity, Fall 2014	14
Figure 3.2. Graduate Enrollment for Fall Semesters, 2005-2014	29
Figure 4.1. Master's Degrees Conferred by Degree Type, 2014-2015	32
Figure 4.2. Degree Completion by Ethnicity, 2014-2015	40
Figure 5.1. Average Time to Terminal Master's Degree By Program for Academic Years, 2010-2011 through 2014-2015	43
Figure 5.2. Average Time to Doctoral Degree by Program for Academic Years, 2010-2011 through 2014-2015	46
Figure 5.3. Outcomes of Students Entering Doctoral Program for Academic Years, 2004-2015	48
Figure 6.1. Financial Support For Fall Semesters for Academic Years, 2010-2014	49
Figure 6.2. Doctoral Students by Type of Funding, Fall 2014	51
Figure 6.3. Master's Students by Type of Funding, Fall 2014	52

THIS PAGE INTENTIONALLY LEFT BLANK

PART 1: APPLICATIONS AND ADMISSIONS

TABLE 1.1. DEGREE APPLICATIONS FOR ACADEMIC YEARS, 2010-2011 THROUGH 2014-2015

Year	2010-11	2011-12	2012-13	2013-14	2014-15
Total Degree Applications Received	5,566	5,205	5,462	6,983	8,049
Fees Not Paid	1,540	1,258	1,029	1,990	2,392
<i>% of Total Degree Applications</i>	<i>28%</i>	<i>24%</i>	<i>19%</i>	<i>28%</i>	<i>30%</i>
Fee-Paid	4,026	3,947	4,433	4,993	5,657
Incomplete/Never Forwarded	0	0	1	0	1
Application Withdrawn	83	41	310	169	153
Deferred before Decision	6	1	79	98	133
Considered for Admission	5,477	3,905	4,043	4,726	5,370
Complete/Forwarded	119	0	0	0	0
Incomplete After Review	125	262	72	0	0
Denied Admission	1,675	1,602	1,631	1,904	2,212
Offered Admission	1,874	1,927	2,255	2,826	3,158
<i>Selectivity Rate (%)</i>	<i>34%</i>	<i>49%</i>	<i>56%</i>	<i>60%</i>	<i>59%</i>
Provisional Admits	213	11	39	173	1
Deferred After Decision	140	114	85	181	182
Enrollment Intent	1,081	1,171	1,329	1,506	1,819
Deposit Waived - Withdrawn	21	6	24	17	6
Deposit Paid - Withdrawn	76	148	188	264	400
Deposit Waived	197	83	51	139	133
Deposit Paid	787	934	1,066	1,086	1,210
<i>Yield Rate (%)</i>	<i>58%</i>	<i>61%</i>	<i>59%</i>	<i>53%</i>	<i>58%</i>

FIGURE 1.1. APPLICATION TO ENROLLMENT PROFILE FOR ACADEMIC YEARS, 2010-2011 THROUGH 2014-2015

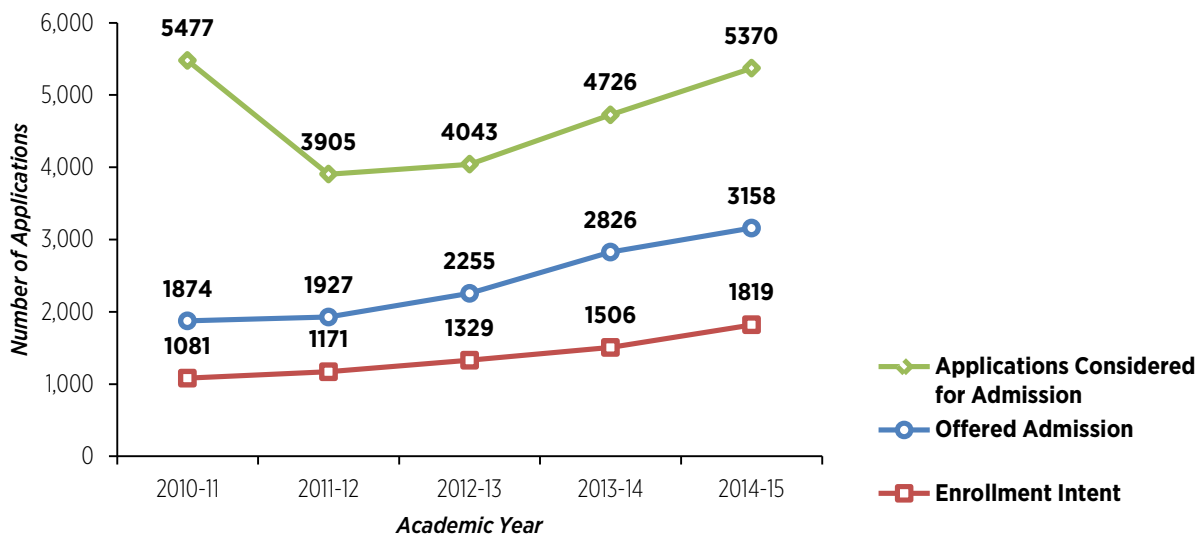


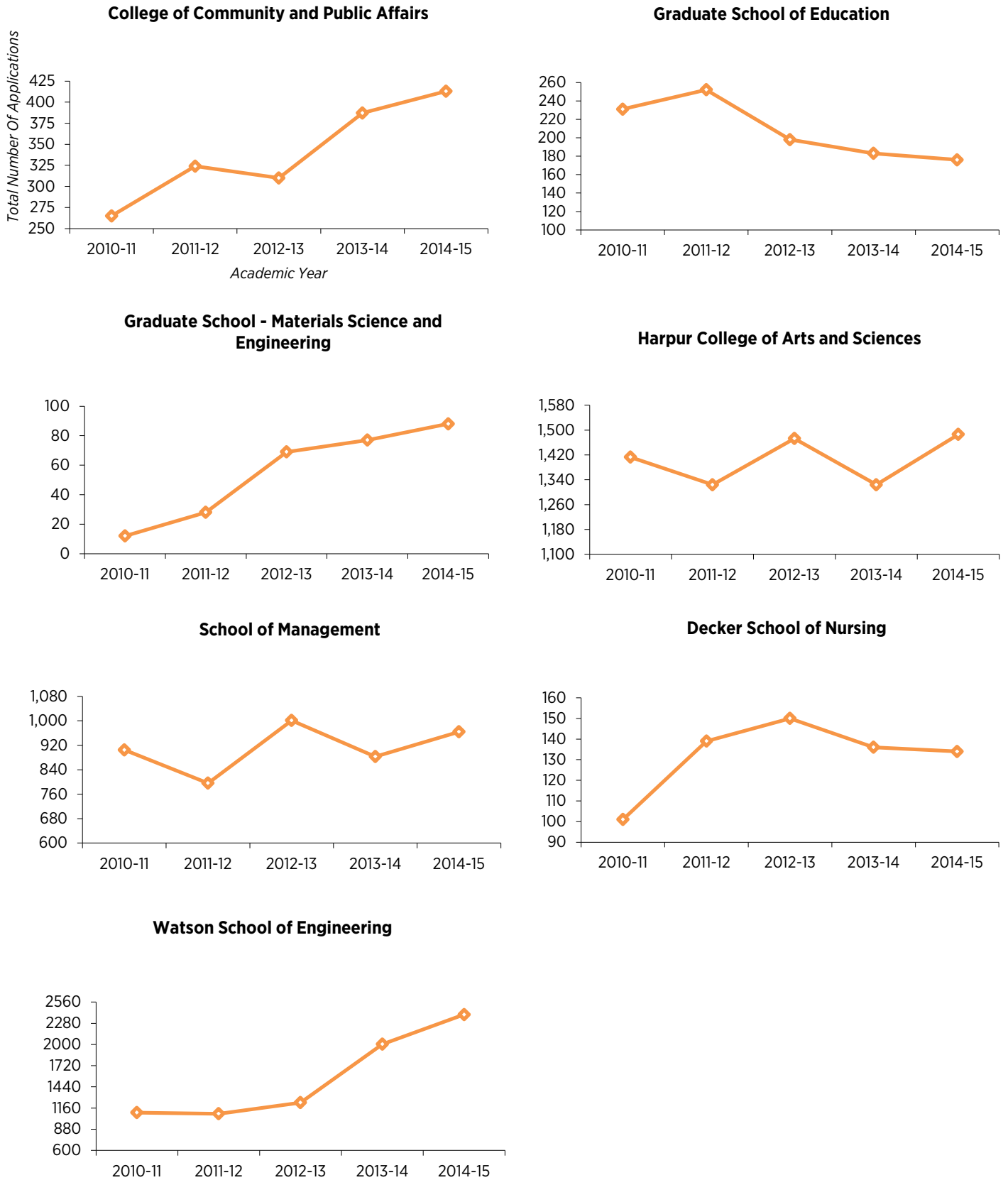
TABLE 1.2. FEE-PAID APPLICATIONS BY SCHOOL FOR ACADEMIC YEARS, 2010-2011 THROUGH 2014-2015

Year	2010-11	2011-12	2012-13	2013-14	2014-15	% Change
COLLEGE OF COMMUNITY & PUBLIC AFFAIRS						
Community and Public Affairs (PhD)	N/A	N/A	N/A	16	19	19%
Public Administration (MPA)	91	120	133	164	189	15%
Social Work (MSW)	129	162	139	172	165	-4%
Student Affairs Administration (MS)	45	42	38	35	40	14%
Total Applications	265	324	310	387	413	
% Change	-13%	22%	-4%	25%	7%	
GRADUATE SCHOOL OF EDUCATION						
Professional Education (MSEd)	123	149	99	106	99	-7%
Professional Education (MAT)	84	70	61	47	52	11%
Educational Theory (EdD)	14	23	22	16	11	-31%
Educational Leadership Certificate	10	10	16	14	14	0%
Total Applications	231	252	198	183	176	-4%
% Change	-7%	9%	-21%	-8%	-4%	
GS - MATERIALS SCIENCE AND ENGINEERING						
Certificate Programs	N/A	1	8	0	0	N/A
Master's - MSE	1	13	34	39	53	36%
PhD - MSE	11	14	27	38	35	-8%
Total Applications	12	28	69	77	88	
% Change	N/A	133%	146%	12%	14%	
HARPUR COLLEGE OF ARTS AND SCIENCES						
Anthropology	84	109	108	85	104	22%
Art History	35	35	30	36	23	-36%
Asian and Asian-American Studies	N/A	N/A	15	17	23	35%
Biology	107	126	117	88	84	-5%
Chemistry	41	44	65	56	94	68%
Comparative Literature	37	32	31	41	43	5%
Economics	156	150	143	122	129	6%
English	144	104	124	89	101	13%
Geography	41	31	32	29	33	14%
Geological Sciences	26	26	26	20	31	55%
History	92	75	82	92	87	-5%
Materials Science	14	N/A	N/A	N/A	N/A	N/A
Mathematics	83	88	106	86	100	16%
Music	33	43	45	34	37	9%
Philosophy - SPEL	45	34	32	40	78	95%
Philosophy - PIC	31	17	4	N/A	N/A	N/A
Physics	22	17	19	25	27	8%

TABLE 1.2. FEE-PAID APPLICATIONS BY SCHOOL FOR ACADEMIC YEARS, 2010-2011 THROUGH 2014-2015 (CON'T)

Year	2010-11	2011-12	2012-13	2013-14	2014-15	% Change
Political Science	45	52	71	69	73	6%
Psychology - Neuroscience	27	25	51	30	41	37%
Psychology - Clinical	243	213	248	255	257	1%
Psychology - Cognitive	25	25	28	25	30	20%
Romance Languages	11	1	6	6	5	-17%
Sociology	46	42	51	53	47	-11%
Theater	7	12	11	6	7	17%
Translation Studies - PhD	18	23	28	20	32	60%
Total Applications	1,413	1,324	1,473	1,324	1,486	
<i>% Change</i>	5%	-6%	11%	-10%	12%	
SCHOOL OF MANAGEMENT						
MBA	210	168	197	195	186	-5%
MS Accounting	574	469	673	551	647	17%
Ph.D.	50	51	66	60	68	13%
Exec.MBA - Health Care	1	3	2	0	0	N/A
Exec.MBA - Corporate	1	22	1	2	0	-100%
Watson BS/SOM MBA Combined	19	14	10	10	19	90%
Professional MBA - Manhattan	48	37	50	34	36	6%
Executive MBA - Manhattan	2	32	2	31	8	-74%
Total Applications	905	796	1,001	883	964	
<i>% Change</i>	31%	-12%	26%	-12%	9%	
DECKER SCHOOL OF NURSING						
Certificate	16	15	19	13	17	31%
Master's	69	110	116	107	101	-6%
DNP	10	8	12	9	6	-33%
PhD	6	6	3	7	10	43%
Total Applications	101	139	150	136	134	
<i>% Change</i>	26%	38%	8%	-9%	-1%	
WATSON SCHOOL OF ENGINEERING						
Biomedical Engineering	30	34	39	50	64	28%
Computer Science	486	469	497	882	1,081	23%
Electrical and Computer Engineering	293	270	343	563	594	6%
Mechanical Engineering	102	112	125	171	240	40%
Industrial Engineering	155	181	204	288	371	29%
Systems Science	22	18	24	49	46	-6%
Materials Engineering	11	N/A	N/A	N/A	N/A	N/A
Total Applications	1,099	1,084	1,232	2,003	2,396	
<i>% Change</i>	4%	-1%	14%	63%	20%	

FIGURE 1.2. FEE-PAID APPLICATIONS BY SCHOOL FOR ACADEMIC YEARS, 2010-2011 THROUGH 2014-2015



PART 2: TEST SCORES

TABLE 2.1. AVERAGE GRE PERCENTILES FOR FALL SEMESTERS, 2005-2014

Year		2005	2006	2007	2008	2009	2010	2011	2012	2013	2014
All Applicants	V	58	57	55	54	53	55	56	56	45	43
	Q	62	59	64	67	68	67	68	69	68	66
	A	49	44	40	36	36	36	35	37	31	31
Offered Admission	V	58	58	56	55	53	55	56	55	45	43
	Q	61	60	64	66	71	70	71	72	71	70
	A	48	44	41	38	35	34	33	35	30	31
Enrolled	V	56	57	54	54	53	54	58	55	45	44
	Q	56	53	59	60	61	65	63	66	63	64
	A	48	46	42	41	39	38	39	40	33	33

V = VERBAL

Q = QUANTITATIVE

A = ANALYTICAL WRITING

FIGURE 2.1.

AVERAGE GRE PERCENTILES OF APPLICANTS, ADMITTEES AND ENROLLEES FOR FALL SEMESTERS, 2005-2014

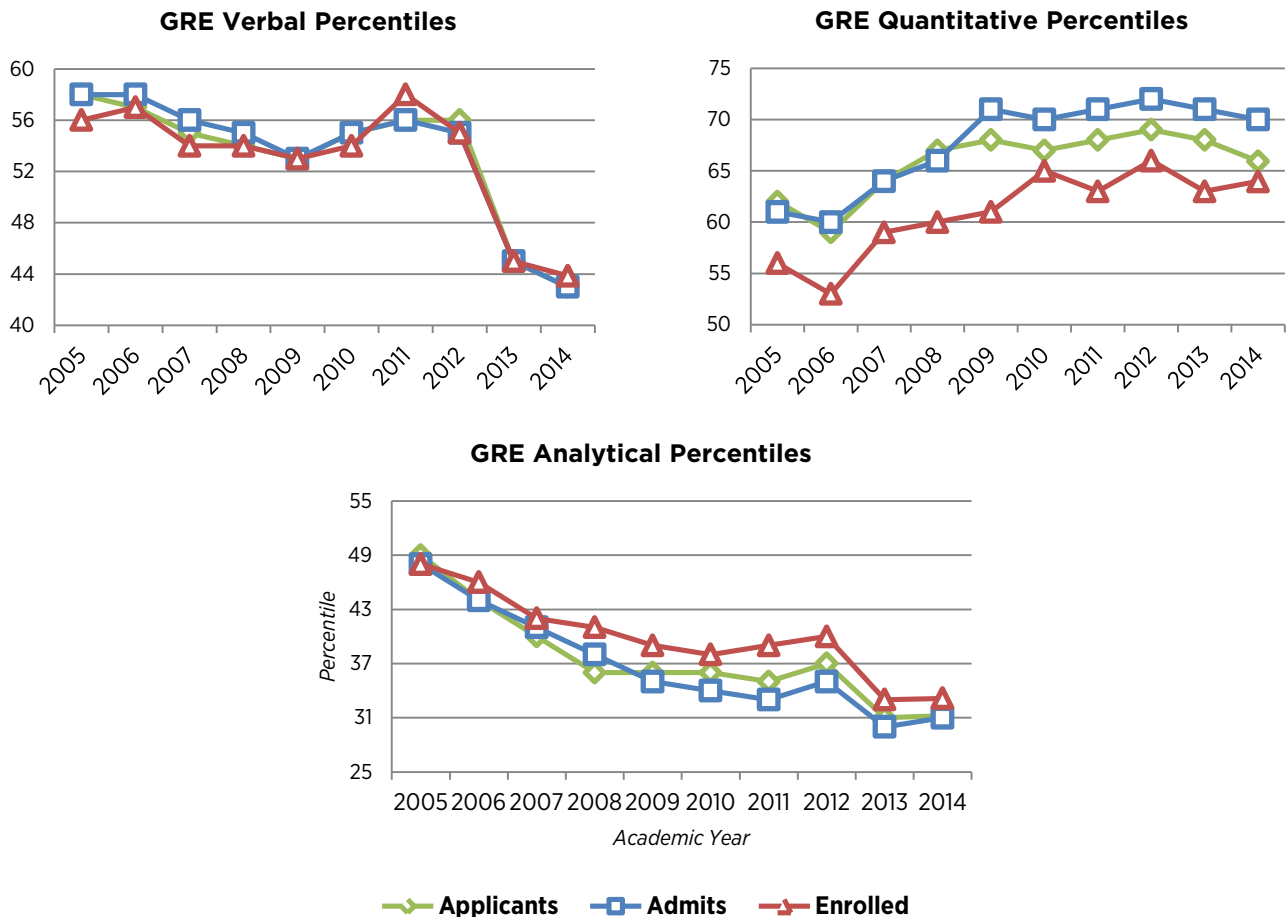


TABLE 2.2. AVERAGE GRE PERCENTILES BY SCHOOL FOR FALL SEMESTERS, 2005-2014

COLLEGE OF COMMUNITY AND PUBLIC AFFAIRS

Year		2005	2005	2007	2008	2009	2010	2011	2012	2013	2014
All Applicants	V	N/A	41	44	48	40	54	56	48	41	41
	Q	N/A	36	34	45	45	54	58	55	64	61
	A	N/A	41	45	40	30	36	41	36	28	32
Offered Admission	V	N/A	42	45	54	43	53	63	52	47	48
	Q	N/A	37	34	43	30	54	55	53	59	57
	A	N/A	42	53	50	32	36	38	39	34	40
Enrolled	V	N/A	37	44	40	35	45	48	43	46	43
	Q	N/A	28	28	25	22	39	37	37	44	39
	A	N/A	40	63	39	15	49	37	42	43	43

GRADUATE SCHOOL OF EDUCATION

Year		2005	2005	2007	2008	2009	2010	2011	2012	2013	2014
All Applicants	V	52	52	53	54	52	52	58	57	51	50
	Q	39	39	10	44	45	47	48	54	48	44
	A	49	44	49	47	44	43	46	48	44	45
Offered Admission	V	55	56	56	54	57	58	59	62	57	55
	Q	41	43	44	44	47	47	46	54	47	43
	A	54	49	54	49	46	49	49	53	50	53
Enrolled	V	53	55	56	56	55	57	60	68	50	53
	Q	41	42	41	45	49	47	45	59	39	41
	A	53	50	54	50	46	52	51	62	45	51

GS - MATERIALS SCIENCE AND ENGINEERING

Year		2005	2005	2007	2008	2009	2010	2011	2012	2013	2014
All Applicants	V	N/A	N/A	N/A	N/A	N/A	47	51	49	39	39
	Q	N/A	N/A	N/A	N/A	N/A	86	89	83	86	84
	A	N/A	N/A	N/A	N/A	N/A	24	17	28	19	20
Offered Admission	V	N/A	N/A	N/A	N/A	N/A	57	44	61	47	43
	Q	N/A	N/A	N/A	N/A	N/A	83	86	84	89	87
	A	N/A	N/A	N/A	N/A	N/A	23	12	37	25	23
Enrolled	V	N/A	N/A	N/A	N/A	N/A	57	41	54	44	43
	Q	N/A	N/A	N/A	N/A	N/A	83	85	89	81	83
	A	N/A	N/A	N/A	N/A	N/A	23	12	29	21	27

V = VERBAL

Q = QUANTITATIVE

A = ANALYTICAL WRITING

TABLE 2.2. AVERAGE GRE PERCENTILES BY SCHOOL FOR FALL SEMESTERS, 2005-2014 (CON'T)

HARPUR COLLEGE OF ARTS AND SCIENCES

Year		2005	2006	2007	2008	2009	2010	2011	2012	2013	2014
SOCIAL SCIENCES											
All Applicants	V	60	62	60	60	60	60	65	63	59	57
	Q	60	57	59	62	63	63	63	65	58	59
	A	49	47	44	41	42	42	41	42	43	44
Offered Admission	V	60	63	63	67	65	66	73	68	63	61
	Q	58	55	56	51	66	67	65	66	60	63
	A	51	49	47	60	47	46	49	46	46	48
Enrolled	V	59	57	59	64	69	67	73	66	63	61
	Q	50	46	50	54	57	64	57	60	48	54
	A	55	47	46	49	51	43	50	47	31	50
HUMANITIES											
All Applicants	V	69	69	71	71	74	60	75	71	65	65
	Q	41	41	44	54	50	63	49	48	46	42
	A	58	58	54	53	56	42	56	55	53	52
Offered Admission	V	70	74	73	77	75	81	80	76	67	68
	Q	41	41	44	45	50	49	47	50	48	44
	A	61	59	58	60	60	33	56	57	52	54
Enrolled	V	70	74	70	69	68	74	79	76	61	60
	Q	38	38	42	43	43	47	43	45	45	41
	A	57	57	53	55	57	58	55	59	46	45
MATHS & SCIENCES											
All Applicants	V	63	63	63	61	62	64	66	66	63	60
	Q	62	61	67	67	68	68	67	69	67	64
	A	56	52	50	44	49	46	48	51	51	49
Offered Admission	V	59	61	61	58	58	64	69	65	61	59
	Q	69	70	71	72	74	70	72	78	73	76
	A	51	45	45	41	43	41	49	48	45	43
Enrolled	V	60	60	58	58	58	62	63	64	63	61
	Q	66	73	68	72	75	68	70	75	68	72
	A	53	48	41	43	45	42	45	48	45	47

V = VERBAL

Q = QUANTITATIVE

A = ANALYTICAL WRITING

TABLE 2.2. AVERAGE GRE PERCENTILES BY SCHOOL FOR FALL SEMESTERS, 2005-2014 (CON'T)**DECKER SCHOOL OF NURSING**

	Year	2005	2006	2007	2008	2009	2010	2011	2012	2013	2014
All Applicants	V	45	56	45	42	N/A	51	53	68	47	49
	Q	46	39	34	46	N/A	36	49	47	34	47
	A	38	38	42	30	N/A	28	43	31	38	44
Offered Admission	V	45	61	43	39	N/A	48	53	59	47	48
	Q	34	32	34	48	N/A	19	49	34	34	44
	A	32	42	44	32	N/A	41	43	32	38	39
Enrolled	V	0	47	39	32	N/A	16	46	61	47	66
	Q	0	25	37	31	N/A	18	44	42	40	45
	A	0	41	41	0	N/A	41	42	40	36	74

WATSON SCHOOL OF ENGINEERING

	Year	2005	2006	2007	2008	2009	2010	2011	2012	2013	2014
All Applicants	V	49	44	43	42	37	37	40	40	30	30
	Q	78	78	80	81	81	80	80	80	77	73
	A	36	28	26	22	19	17	16	20	17	19
Offered Admission	V	50	46	45	43	41	41	41	42	33	32
	Q	79	78	80	81	82	82	82	81	81	77
	A	35	29	27	22	21	19	17	21	18	20
Enrolled	V	48	45	42	39	35	35	38	35	29	31
	Q	77	78	80	78	76	79	81	79	79	74
	A	36	31	27	23	19	19	16	21	16	20

V = VERBAL**Q** = QUANTITATIVE**A** = ANALYTICAL WRITING

FIGURE 2.2.

AVERAGE GRE PERCENTILES FOR NEW ENROLLED STUDENTS BY SCHOOL FOR FALL SEMESTERS, 2005-2014

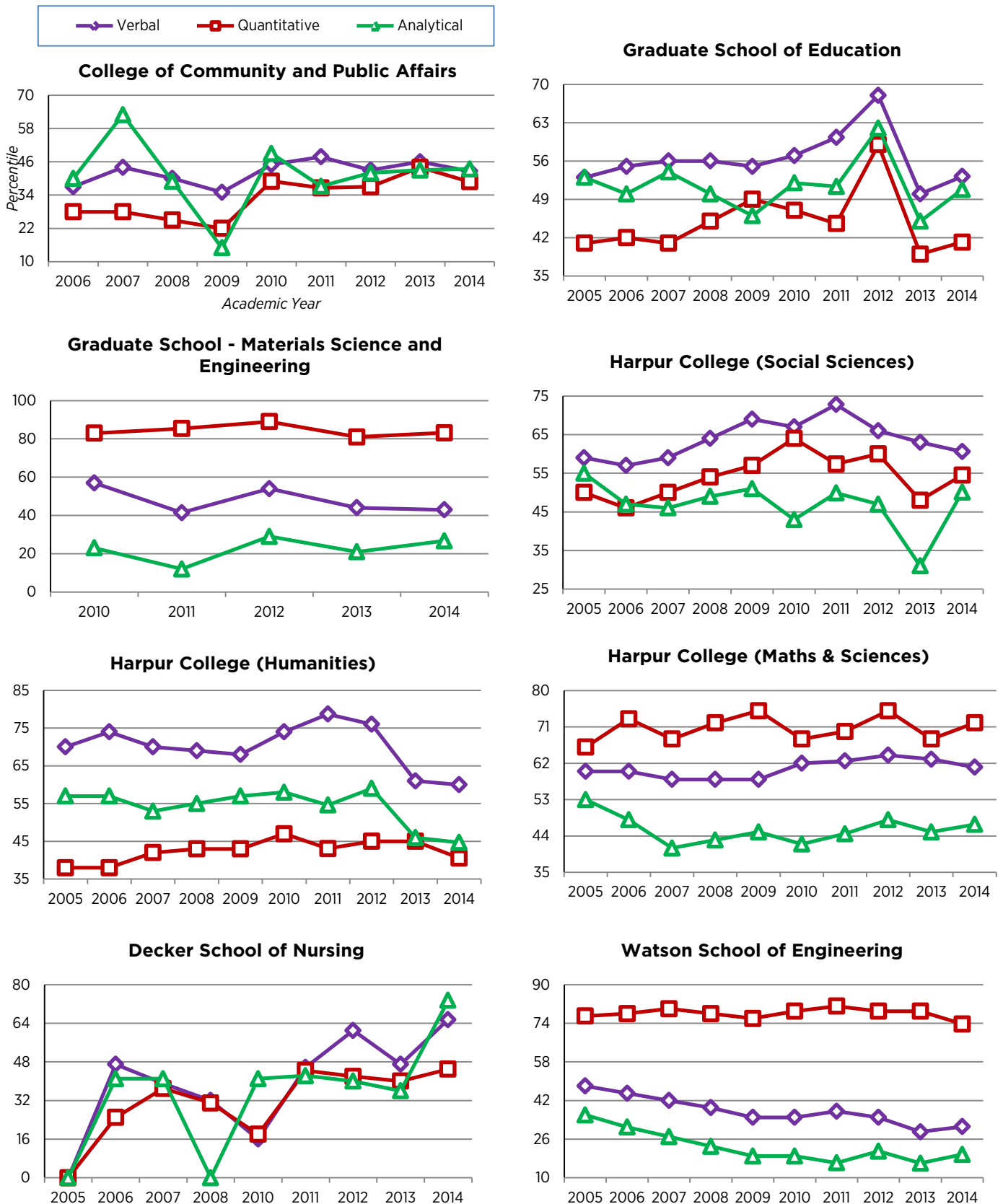
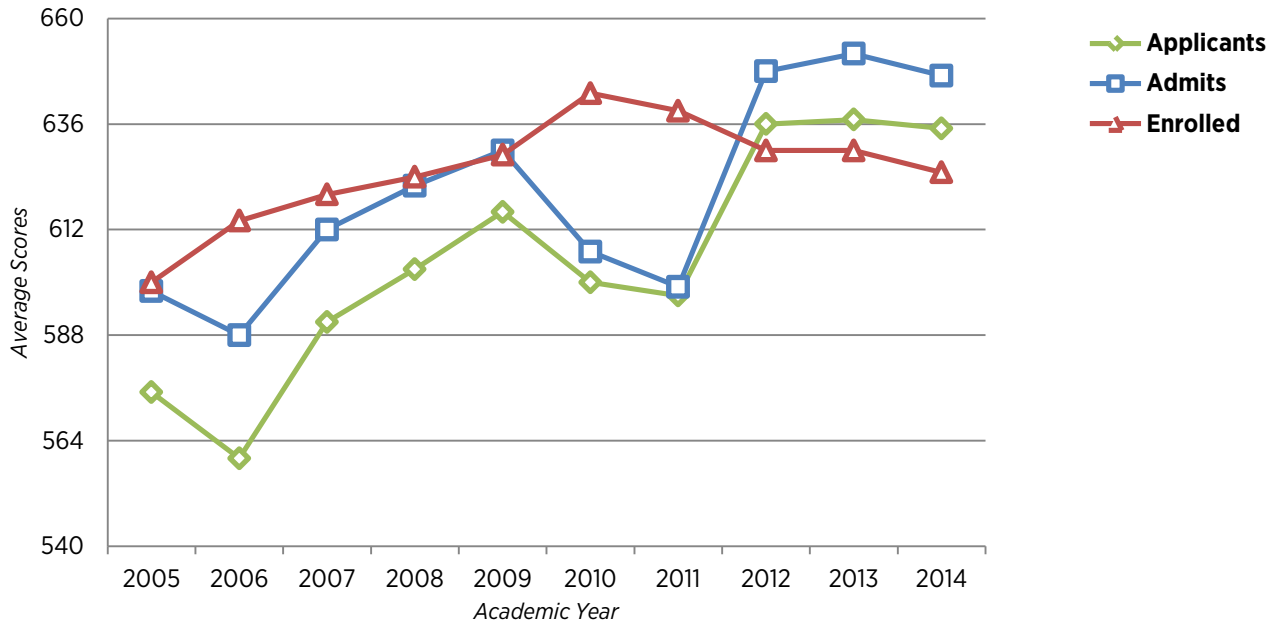


TABLE 2.3. AVERAGE TOTAL GMAT SCORES FOR FALL SEMESTERS, 2005-2014

	Year	2005	2006	2007	2008	2009	2010	2011	2012	2013	2014
All Applicants	Total Score	575	560	591	603	616	600	597	636	637	635
	Percentile	60	57	66	67	70	64	62	72	72	72
Offered Admission	Total Score	598	588	612	622	630	607	599	648	652	647
	Percentile	67	66	71	73	74	63	63	77	78	76
Enrolled	Total Score	600	614	620	624	629	643	639	630	630	625
	Percentile	62	67	69	70	72	74	73	71	71	69

FIGURE 2.3. AVERAGE GMAT SCORES OF APPLICANTS, ADMITTEES AND ENROLLEES FOR FALL SEMESTERS, 2005-2014



PART 3: GRADUATE ENROLLMENT

TABLE 3.1. TOTAL GRADUATE ENROLLMENT BY GENDER FOR FALL SEMESTERS, 2005-2014

Year	2005	2006	2007	2008	2009	2010	2011	2012	2013	2014
Male	1,420	1,410	1,481	1,576	1,581	1,532	1,494	1,484	1,552	1,732
Female	1,424	1,440	1,439	1,540	1,473	1,420	1,456	1,491	1,531	1,591
Total	2,844	2,850	2,920	3,116	3,054	3,109	2,950	2,975	3,083	3,323
% Change	1%	0%	2%	7%	-2%	2%	-5%	1%	4%	8%

TABLE 3.2. TOTAL GRADUATE ENROLLMENT BY ETHNICITY AND GENDER FOR FALL SEMESTERS, 2010-2014

Year	2010			2011			2012			2013			2014		
	M	F	Total	M	F	Total	M	F	Total	M	F	Total	M	F	Total
International	597	348	945	539	340	879	551	370	921	433	655	1,088	824	516	1,340
Hispanic/ Latino	48	57	105	45	59	104	60	62	122	63	59	122	60	66	126
Native American	4	5	9	3	5	8	8	6	14	9	7	16	4	9	13
Asian	100	62	162	68	58	126	63	58	121	60	59	119	78	70	148
Black/ African American	33	53	86	30	42	72	45	53	98	62	41	103	39	66	105
Native Hawaiian/ Pacific Isln	N/A	N/A	N/A	14	8	22	33	28	61	20	22	42	14	15	29
White	664	793	1,457	626	761	1,387	679	853	1,532	824	653	1,477	665	804	1,469
Unknown or Not Reported	86	102	188	169	183	352	45	61	106	60	56	116	48	45	93

FIGURE 3.1. TOTAL GRADUATE ENROLLMENT BY ETHNICITY, FALL 2014

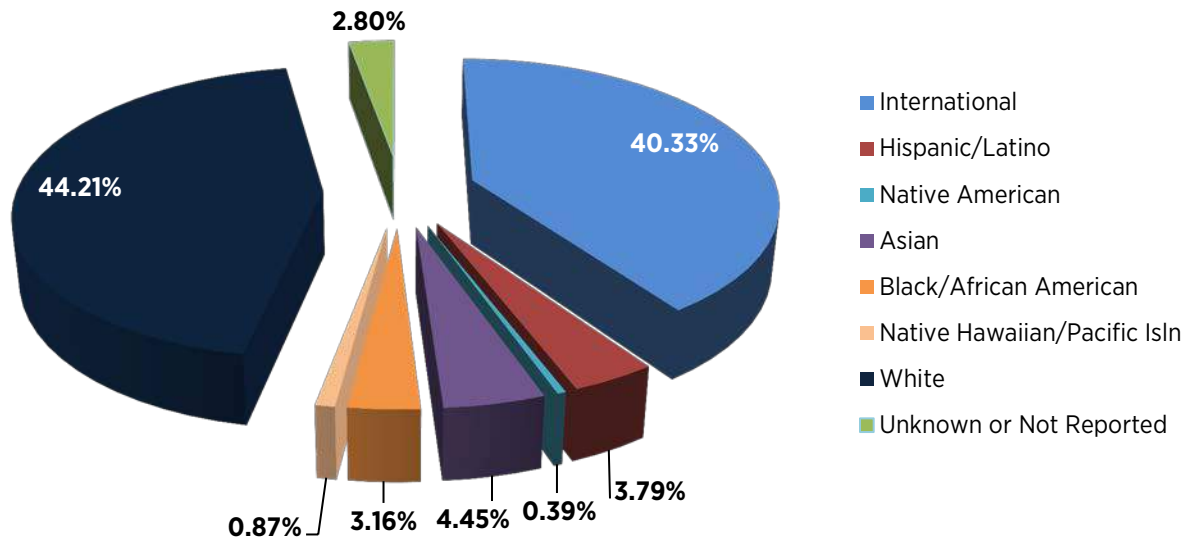


TABLE 3.3. GRADUATE ENROLLMENT BY SCHOOL FOR FALL SEMESTERS, 2005-2014

Year	2005	2006	2007	2008	2009	2010	2011	2012	2013	2014
HARPUR COLLEGE OF ARTS & SCIENCES										
New Students	256	219	244	231	218	227	205	226	219	237
Continuing Students	899	931	921	945	948	910	887	879	862	845
Total	1,155	1,150	1,165	1,176	1,166	1,137	1,092	1,105	1,081	1,082
<i>% of Total Graduate Enrollment</i>	44%	44%	43%	41%	40%	38%	39%	39%	36%	34%
<i>% Change from Previous Year</i>	3.4%	-0.4%	1.3%	0.9%	-0.9%	-2.5%	-4%	1.2%	-2.2%	0.1%
WATSON SCHOOL OF ENGINEERING										
New Students	157	142	171	179	162	182	156	207	284	393
Continuing Students	439	480	514	530	560	555	517	440	507	583
Total	596	622	685	709	722	737	673	647	791	976
<i>% of Total Graduate Enrollment</i>	23%	24%	25%	25%	25%	25%	24%	23%	27%	31%
<i>% Change from Previous Year</i>	0.5%	4.4%	10.1%	3.5%	1.8%	2.1%	-8.7%	-3.9%	22.3%	23.4%
GRADUATE SCHOOL OF EDUCATION										
New Students	122	63	58	87	83	83	72	55	71	73
Continuing Students	371	186	198	207	232	222	219	190	155	150
Total	493	249	256	294	315	305	291	245	226	223
<i>% of Total Graduate Enrollment</i>	19%	10%	9%	10%	11%	10%	10%	9%	8%	7%
<i>% Change from Previous Year</i>	3.3%	-49.5%	2.8%	14.8%	7.1%	-3.2%	-4.6%	-15.8%	-7.8%	-1.3%
SCHOOL OF MANAGEMENT										
New Students	105	109	154	182	150	202	198	233	242	253
Continuing Students	113	120	98	140	167	126	90	114	111	148
Total	218	229	252	322	317	328	288	347	353	401
<i>% of Total Graduate Enrollment</i>	8%	9%	9%	11%	11%	11%	10%	12%	12%	13%
<i>% Change from Previous Year</i>	-8.0%	5.0%	10.0%	27.8%	-1.6%	3.5%	-12.2%	20.5%	1.7%	13.6%
DECKER SCHOOL OF NURSING										
New Students	15	28	31	29	42	45	55	63	59	46
Continuing Students	59	57	82	87	77	112	130	153	174	156
Total	74	85	113	116	119	157	185	216	233	202
<i>% of Total Graduate Enrollment</i>	3%	3%	4%	4%	4%	5%	7%	8%	8%	6%
<i>% Change from Previous Year</i>	-6.3%	14.9%	32.9%	2.7%	2.6%	31.9%	17.8%	16.8%	7.9%	-13.3%
COLLEGE OF COMMUNITY AND PUBLIC AFFAIRS										
New Students	20	85	93	93	80	93	78	89	113	107
Continuing Students	56	207	152	176	176	181	165	151	151	157
Total	76	292	245	269	256	274	243	240	264	264
<i>% of Total Graduate Enrollment</i>	3%	11%	9%	9%	9%	9%	9%	8%	9%	8%
<i>% Change from Previous Year</i>	0%	284.2%	-16.1%	9.8%	-4.8%	7%	-11.3%	-1.2%	10%	0%

TABLE 3.3. GRADUATE ENROLLMENT BY SCHOOL FOR FALL SEMESTERS, 2005-2014 (CON'T)

Year	2005	2006	2007	2008	2009	2010	2011	2012	2013	2014
GS - MATERIALS SCIENCE AND ENGINEERING										
New Students	N/A	N/A	N/A	N/A	N/A	4	5	11	4	14
Continuing Students	N/A	N/A	N/A	N/A	N/A	33	29	32	29	31
Total	N/A	N/A	N/A	N/A	N/A	37	34	43	33	45
<i>% of Total Graduate Enrollment</i>	<i>N/A</i>	<i>N/A</i>	<i>N/A</i>	<i>N/A</i>	<i>N/A</i>	<i>N/A</i>	<i>1%</i>	<i>2%</i>	<i>1%</i>	<i>1%</i>
<i>% Change from Previous Year</i>	<i>N/A</i>	<i>N/A</i>	<i>N/A</i>	<i>N/A</i>	<i>N/A</i>	<i>N/A</i>	<i>-8.1%</i>	<i>26.5%</i>	<i>-23.3%</i>	<i>36.4%</i>
Total Enrollment¹	2,612	2,627	2716	2,886	2,895	2,975	2,806	2,843	2,981	3,193
<i>% Change from Previous Year</i>	<i>1.3%</i>	<i>0.6%</i>	<i>3.4%</i>	<i>6.3%</i>	<i>0.3%</i>	<i>2.8%</i>	<i>-5.6%</i>	<i>1.3%</i>	<i>4.9%</i>	<i>7.1%</i>

TABLE 3.4. GRADUATE ENROLLMENT IN HARPUR COLLEGE OF ARTS & SCIENCES FOR FALL SEMESTERS, 2005-2014

Year	2005	2006	2007	2008	2009	2010	2011	2012	2013	2014
ANTHROPOLOGY										
New Students	23	22	24	16	19	16	24	27	27	35
Continuing Students	112	107	109	123	105	112	93	106	109	112
Total	135	129	133	139	124	128	117	133	136	147
<i>% Change from Previous Year</i>	<i>10.6%</i>	<i>-4.4%</i>	<i>3.1%</i>	<i>4.5%</i>	<i>-10.8%</i>	<i>3.2%</i>	<i>-8.6%</i>	<i>13.7%</i>	<i>2.3%</i>	<i>8.1%</i>
ART HISTORY										
New Students	5	3	8	7	4	5	4	8	7	5
Continuing Students	31	30	28	33	32	28	33	30	28	25
Total	36	33	36	40	36	33	37	38	35	30
<i>% Change from Previous Year</i>	<i>-5.2%</i>	<i>-8.3%</i>	<i>9.1%</i>	<i>11.1%</i>	<i>-10%</i>	<i>-8.3%</i>	<i>12.1%</i>	<i>2.7%</i>	<i>-7.9%</i>	<i>-14.3%</i>
ASIAN & ASIAN AMERICAN STUDIES										
New Students	N/A	N/A	N/A	N/A	N/A	N/A	N/A	3	6	7
Continuing Students	N/A	N/A	N/A	N/A	N/A	N/A	N/A	0	3	7
Total	N/A	N/A	N/A	N/A	N/A	N/A	N/A	3	9	14
<i>% Change from Previous Year</i>	<i>N/A</i>	<i>N/A</i>	<i>N/A</i>	<i>N/A</i>	<i>N/A</i>	<i>N/A</i>	<i>N/A</i>	<i>N/A</i>	<i>200%</i>	<i>55.6%</i>
BIOLOGICAL SCIENCES										
New Students	10	8	24	16	26	15	14	17	19	15
Continuing Students	32	36	41	40	51	63	57	55	55	50
Total	42	44	65	56	77	78	71	72	74	65
<i>% Change from Previous Year</i>	<i>-8.7%</i>	<i>4.8%</i>	<i>47.7%</i>	<i>-13.8%</i>	<i>37.5%</i>	<i>1.3%</i>	<i>-9%</i>	<i>1.4%</i>	<i>2.8%</i>	<i>-12.2%</i>
CHEMISTRY										
New Students	7	12	13	16	6	9	9	9	10	13
Continuing Students	46	41	45	51	51	48	47	42	44	42
Total	53	53	58	67	57	57	56	51	54	55
<i>% Change from Previous Year</i>	<i>-19.7%</i>	<i>0%</i>	<i>9.4%</i>	<i>15.5%</i>	<i>-14.9%</i>	<i>0%</i>	<i>-1.8%</i>	<i>-8.9%</i>	<i>5.9%</i>	<i>1.9%</i>

¹ Degree-seeking students

TABLE 3.4. GRADUATE ENROLLMENT IN HARPUR COLLEGE OF ARTS & SCIENCES FOR FALL SEMESTERS, 2005-2014 (CON'T)

Year	2005	2006	2007	2008	2009	2010	2011	2012	2013	2014
COMPARATIVE LITERATURE										
New Students	11	10	9	11	8	8	10	7	11	6
Continuing Students	67	65	56	54	56	50	46	53	54	55
Total	78	75	65	65	64	58	56	60	65	61
<i>% Change from Previous Year</i>	1%	-3.8%	-13.3%	0%	-1.5%	-9.4%	-3.4%	7.1%	8.3%	-6.2%
ECONOMICS										
New Students	21	18	20	14	20	27	14	12	15	24
Continuing Students	42	52	49	56	52	52	57	44	38	41
Total	63	70	69	70	72	79	71	56	53	65
<i>% Change from Previous Year</i>	5%	11.1%	-1.4%	1.4%	2.9%	9.7%	-10.1%	-21.1%	-5.4%	22.6%
ENGLISH										
New Students	34	25	24	15	22	15	16	25	20	19
Continuing Students	108	114	104	102	91	89	81	79	78	70
Total	142	139	128	117	113	104	97	104	98	89
<i>% Change from Previous Year</i>	8.4%	-2.1%	-7.9%	-8.6%	-3.4%	-8%	-6.7%	7.2%	-5.8%	-9.2%
GEOGRAPHY										
New Students	5	12	10	9	8	16	8	9	13	12
Continuing Students	20	8	15	13	11	16	25	20	17	22
Total	25	20	25	22	19	32	33	29	30	34
<i>% Change from Previous Year</i>	-13.8%	-20%	25%	-12%	-13.6%	68.4%	3.1%	-12.1%	3.4%	13.3%
GEOLOGICAL SCIENCES										
New Students	7	4	5	6	6	5	5	3	3	8
Continuing Students	33	33	30	29	30	28	25	28	23	18
Total	40	37	35	35	36	33	30	31	26	26
<i>% Change from Previous Year</i>	8.1%	-7.5%	-5.4%	0%	2.9%	-8.3%	-9.1%	3.3%	-16.1%	0%
HISTORY										
New Students	19	22	19	15	15	19	15	10	21	16
Continuing Students	79	79	90	95	82	77	82	72	62	62
Total	98	101	109	110	97	96	97	82	83	78
<i>% Change from Previous Year</i>	6.5%	3.1%	7.9%	0.9%	-11.8%	-1%	1%	-15.5%	1.2%	-6%
MATHEMATICS										
New Students	15	13	13	18	19	14	18	22	17	18
Continuing Students	37	46	44	39	49	51	54	53	52	54
Total	52	59	57	57	68	65	72	75	69	72
<i>% Change from Previous Year</i>	0%	13.5%	-3.4%	0%	19.3%	-4.4%	10.8%	4.2%	-8%	4.3%
MATERIAL SCIENCES										
New Students	3	2	4	3	1	2	0	0	N/A	N/A
Continuing Students	11	12	15	18	22	1	1	1	N/A	N/A
Total	14	14	19	21	23	3	1	1	N/A	N/A
<i>% Change from Previous Year</i>	0%	0%	35.7%	10.5%	9.5%	-87%	-66.7%	0%	N/A	N/A

TABLE 3.4. GRADUATE ENROLLMENT IN HARPUR COLLEGE OF ARTS & SCIENCES FOR FALL SEMESTERS, 2005-2014 (CON'T)

Year	2005	2006	2007	2008	2009	2010	2011	2012	2013	2014
MUSIC PERFORMANCE - MM										
New Students	13	5	13	15	7	7	8	8	6	10
Continuing Students	20	15	7	13	17	8	10	11	11	7
Total	33	20	20	28	24	15	18	19	17	17
<i>% Change from Previous Year</i>	6.5%	-39.4%	0%	40%	-14.3%	-37.5%	20%	5.6%	-10.5%	0%
PHILOSOPHY - PIC										
New Students	11	4	4	9	4	5	3	0	0	0
Continuing Students	50	55	48	44	45	45	33	28	21	16
PHILOSOPHY - SPEL										
New Students	7	7	7	7	11	8	7	6	7	6
Continuing Students	14	19	23	26	27	31	30	28	28	30
Total	82	85	82	86	87	89	73	62	56	52
<i>% Change from Previous Year</i>	24.3%	3.7%	-3.5%	4.9%	1.2%	2.3%	-18%	-15.1%	-9.7%	-7.1%
PHYSICS										
New Students	3	2	2	4	3	6	6	9	7	6
Continuing Students	3	4	5	4	7	8	13	19	25	29
Total	6	6	7	8	10	14	19	28	32	35
<i>% Change from Previous Year</i>	50%	0%	16.7%	14.3%	25%	40%	35.7%	47.4%	14.3%	9.4%
POLITICAL SCIENCE										
New Students	20	15	11	10	10	10	10	18	10	5
Continuing Students	27	30	38	36	41	39	39	37	40	41
Total	47	45	49	46	51	49	49	55	50	46
<i>% Change from Previous Year</i>	14.6%	-4.3%	8.9%	-6.1%	10.9%	-3.9%	0%	12.2%	-9.1%	-8%
PSYCHOLOGY										
Behavioral Neuroscience										
New Students	5	4	6	6	4	8	6	9	2	5
Continuing Students	17	18	21	23	22	21	21	20	20	19
Cognitive										
New Students	5	3	4	5	2	5	5	4	3	3
Continuing Students	10	14	15	14	16	14	14	14	18	17
Clinical										
New Students	8	6	8	6	4	7	11	5	5	7
Continuing Students	41	38	35	38	34	31	34	39	37	37
Total	86	83	89	92	82	86	91	91	85	88
<i>% Change from Previous Year</i>	-1.1%	-3.5%	7.2%	3.4%	-10.9%	4.9%	5.8%	0%	-6.6%	3.5%
SOCIOLOGY										
New Students	7	2	6	11	6	14	6	8	4	7
Continuing Students	79	79	79	66	66	59	61	66	69	63
Total	86	81	85	77	72	73	67	74	73	70
<i>% Change from Previous Year</i>	-8.5%	-5.8%	4.9%	-9.4%	-6.5%	1.4%	-8.2%	10.4%	-1.4%	-4.1%

TABLE 3.4. GRADUATE ENROLLMENT IN HARPUR COLLEGE OF ARTS & SCIENCES FOR FALL SEMESTERS, 2005-2014 (CON'T)

Year	2005	2006	2007	2008	2009	2010	2011	2012	2013	2014
ROMANCE LANGUAGES										
French										
New Students	0	0	0	1	0	0	0	1	0	0
Continuing Students	2	2	2	0	1	1	0	0	1	2
Italian										
New Students	1	0	0	0	1	0	0	0	0	2
Continuing Students	0	1	1	3	2	2	0	0	0	1
Spanish										
New Students	4	2	3	3	0	2	0	0	0	0
Continuing Students	5	6	2	3	3	4	4	1	1	1
Total	12	11	8	10	7	9	4	2	2	6
<i>% Change from Previous Year</i>	<i>0%</i>	<i>-8.3%</i>	<i>-27.3%</i>	<i>25%</i>	<i>-30%</i>	<i>28.6%</i>	<i>-55.6%</i>	<i>-50%</i>	<i>0%</i>	<i>200%</i>
THEATER										
New Students	2	2	2	3	3	3	4	3	2	2
Continuing Students	6	4	4	6	4	7	5	9	5	2
Total	8	6	7	8	7	10	9	12	7	4
<i>% Change from Previous Year</i>	<i>-20%</i>	<i>-25%</i>	<i>16.7%</i>	<i>14.3%</i>	<i>-12.5%</i>	<i>42.9%</i>	<i>-10%</i>	<i>33.3%</i>	<i>-41.7%</i>	<i>-42.9%</i>
TRANSLATION STUDIES - PHD										
New Students	4	0	1	5	2	1	2	3	4	7
Continuing Students	5	5	10	16	22	25	22	24	23	21
Total	9	5	11	21	24	26	24	27	27	28
<i>% Change from Previous Year</i>	<i>125%</i>	<i>-44.4%</i>	<i>120%</i>	<i>90.9%</i>	<i>14.3%</i>	<i>8.3%</i>	<i>-7.7%</i>	<i>12.5%</i>	<i>0%</i>	<i>3.7%</i>

TABLE 3.5. GRADUATE ENROLLMENT IN WATSON SCHOOL OF ENGINEERING FOR FALL SEMESTERS, 2005-2014

Year	2005	2006	2007	2008	2009	2010	2011	2012	2013	2014
COMPUTER SCIENCES										
Computer Science - MS										
New Students	8	0	0	71	61	75	43	71	105	129
Continuing Students	117	64	22	156	164	161	146	104	138	173
Computer Science - MS/PhD										
New Students	62	76	77	5	3	1	4	7	7	5
Continuing Students	48	118	173	45	48	53	54	53	47	50
Total	235	258	272	277	276	290	247	235	297	357
<i>% Change from Previous Year</i>	-4.1%	9.8%	5.4%	1.8%	-0.4%	5.1%	-14.8%	-4.9%	26.4%	20.2%
ELECTRICAL ENGINEERING										
Electrical Engineering - MS										
New Students	1	0	2	21	17	30	24	37	61	67
Continuing Students	54	30	16	62	80	72	48	39	51	78
Electrical Engineering - MEng										
New Students	3	6	13	9	3	4	3	6	5	2
Continuing Students	17	15	23	31	20	10	10	8	5	2
Computer Engineering - MEng										
New Students	2	0	3	3	3	2	4	1	3	0
Continuing Students	9	9	6	4	3	1	2	4	2	2
Electrical Engineering - MS/PhD										
New Students	20	19	19	9	2	4	5	10	12	11
Continuing Students	38	60	77	34	44	45	46	46	47	54
Total	144	139	159	173	172	168	142	151	186	216
<i>% Change from Previous Year</i>	-13.3%	-3.5%	14.4%	8.8%	-0.6%	-2.3%	-15.5%	6.3%	23.2%	16.1%
MECHANICAL ENGINEERING										
Mechanical Engineering - MS										
New Students	0	0	0	6	0	20	26	12	19	29
Continuing Students	16	7	5	28	25	25	31	20	12	24
Mechanical Engineering - MEng										
New Students	1	0	0	0	0	1	1	0	1	2
Continuing Students	5	3	0	0	1	3	2	1	1	1
Mechanical Engineering - MS/PhD										
New Students	20	12	13	7	7	6	3	6	5	7
Continuing Students	23	42	51	27	27	34	35	30	34	35
Total	65	64	69	68	60	89	98	69	72	98
<i>% Change from Previous Year</i>	35.4%	-1.5%	7.8%	-1.4%	-11.8%	48.3%	10.1%	-29.6%	4.3%	36.1%

TABLE 3.5. GRADUATE ENROLLMENT IN WATSON SCHOOL OF ENGINEERING FOR FALL SEMESTERS, 2005-2014 (CON'T)

Year	2005	2006	2007	2008	2009	2010	2011	2012	2013	2014
INDUSTRIAL ENGINEERING/SYSTEMS SCIENCE										
Industrial Engineering - MS										
New Students	26	17	31	32	24	21	26	36	27	68
Continuing Students	40	46	52	57	67	56	40	42	51	54
Industrial Engineering - MEng										
New Students	0	1	0	1	0	0	0	1	2	2
Continuing Students	0	0	1	0	1	2	2	0	2	1
Executive Health Systems Manhattan (ISE) - MS										
New Students	N/A	N/A	N/A	N/A	N/A	N/A	N/A	N/A	1	13
Continuing Students	N/A	N/A	N/A	N/A	N/A	N/A	N/A	N/A	16	1
Health Systems (ISE) - MS										
New Students	N/A	N/A	N/A	N/A	N/A	N/A	N/A	N/A	3	4
Continuing Students	N/A	N/A	N/A	N/A	N/A	N/A	N/A	N/A	5	5
Systems Science - MS										
New Students	0	0	0	3	6	4	1	4	4	2
Continuing Students	12	8	4	9	10	17	14	9	8	8
Systems Engineering - MEng										
New Students	N/A	N/A	N/A	N/A	N/A	N/A	0	0	1	1
Continuing Students	N/A	N/A	N/A	N/A	N/A	N/A	2	3	0	1
Health Systems (SS) - MS										
New Students	N/A	N/A	N/A	N/A	N/A	N/A	N/A	N/A	N/A	1
Continuing Students	N/A	N/A	N/A	N/A	N/A	N/A	N/A	N/A	N/A	0
Executive Health Systems Manhattan (SS) - MS										
New Students	N/A	N/A	N/A	N/A	N/A	N/A	N/A	N/A	0	14
Continuing Students	N/A	N/A	N/A	N/A	N/A	N/A	N/A	N/A	14	2
Industrial and Systems Engineering - MS/PhD										
New Students	0	0	0	4	9	6	8	9	14	10
Continuing Students	0	0	0	32	34	42	42	40	38	47
Systems Science - MS/PhD										
New Students	9	6	9	4	2	3	1	2	1	4
Continuing Students	54	70	71	21	19	16	21	21	17	18
Total	141	148	168	163	172	167	157	167	204	256
<i>% Change from Previous Year</i>	<i>14.6%</i>	<i>5%</i>	<i>13.5%</i>	<i>-3%</i>	<i>5.5%</i>	<i>-2.9%</i>	<i>-6%</i>	<i>6.4%</i>	<i>22.2%</i>	<i>25.5%</i>

TABLE 3.5. GRADUATE ENROLLMENT IN WATSON SCHOOL OF ENGINEERING FOR FALL SEMESTERS, 2005-2014 (CON'T)

Year	2005	2006	2007	2008	2009	2010	2011	2012	2013	2014
MATERIALS ENGINEERING - MS/PHD										
New Students	6	5	4	2	9	1	0	N/A	N/A	N/A
Continuing Students	8	8	13	16	14	6	7	N/A	N/A	N/A
Total	14	13	17	18	23	7	7	N/A	N/A	N/A
<i>% Change from Previous Year</i>	40%	-7.1%	30.8%	5.9%	27.8%	-69.6%	0%	N/A	N/A	N/A
BIOMEDICAL ENGINEERING - MS/PHD										
New Students	N/A	N/A	N/A	2	6	4	7	5	13	22
Continuing Students	N/A	N/A	N/A	7	4	12	15	20	19	27
Total	N/A	N/A	N/A	9	10	16	22	25	32	49
<i>% Change from Previous Year</i>	N/A	N/A	N/A	N/A	11.1%	60%	37.5%	13.6%	28%	53.1%

TABLE 3.6. GRADUATE ENROLLMENT IN GRADUATE SCHOOL OF EDUCATION FOR FALL SEMESTERS, 2005-2014

Year	2005	2006	2007	2008	2009	2010	2011	2012	2013	2014
MA IN TEACHING										
Biology Adolescence										
New Students	3	3	5	7	3	6	1	2	2	1
Continuing Students	3	3	5	11	9	5	4	1	4	6
Chemistry Adolescence										
New Students	2	2	0	1	3	1	1	2	1	2
Continuing Students	2	2	3	0	1	1	1	1	2	1
Earth Science Adolescence										
New Students	0	1	0	0	1	5	1	0	0	0
Continuing Students	3	4	1	1	1	1	5	1	0	0
English Adolescence										
New Students	N/A	9	12	15	15	11	11	6	5	6
Continuing Students	N/A	12	13	17	18	17	12	10	9	8
French Adolescence										
New Students	N/A	N/A	N/A	N/A	N/A	N/A	N/A	1	2	0
Continuing Students	N/A	N/A	N/A	N/A	N/A	N/A	N/A	0	2	4
Mathematics Adolescence										
New Students	7	6	3	9	7	6	5	3	1	7
Continuing Students	11	11	12	10	14	10	4	8	4	2
Physics Adolescence										
New Students	N/A	N/A	N/A	0	1	N/A	1	1	1	1
Continuing Students	N/A	N/A	N/A	3	4	2	1	0	0	0
Social Studies Adolescence										
New Students	8	8	10	10	9	5	10	5	3	7
Continuing Students	13	11	16	19	19	19	10	11	7	7

TABLE 3.6. GRADUATE ENROLLMENT IN GRADUATE SCHOOL OF EDUCATION FOR FALL SEMESTERS, 2005-2014 (CON'T)

Year	2005	2006	2007	2008	2009	2010	2011	2012	2013	2014
Spanish Adolescence										
New Students	N/A	N/A	N/A	N/A	N/A	N/A	N/A	2	2	2
Continuing Students	N/A	N/A	N/A	N/A	N/A	N/A	N/A	0	3	3
Educational Leadership Certificate										
New Students	N/A	N/A	N/A	N/A	0	3	1	2	5	7
Continuing Students	N/A	N/A	N/A	N/A	15	10	16	16	16	9
Total	52	72	80	103	120	102	84	72	69	73
<i>% Change from Previous Year</i>	<i>-1.9%</i>	<i>38.5%</i>	<i>11.1%</i>	<i>28.8%</i>	<i>16.5%</i>	<i>-15%</i>	<i>-17.6%</i>	<i>-14.3%</i>	<i>-4.2%</i>	<i>5.8%</i>
MS IN EDUCATION										
Literacy 5-12										
New Students	0	1	4	6	3	3	4	4	5	1
Continuing Students	7	8	7	8	6	10	9	6	5	5
Mathematics Adolescence										
New Students	1	1	1	1	1	2	1	1	0	1
Continuing Students	4	2	1	3	4	6	4	3	2	1
Social Studies 7-12										
New Students	0	0	N/A	N/A	N/A	N/A	N/A	N/A	N/A	N/A
Continuing Students	0	2	N/A	N/A	N/A	N/A	N/A	N/A	N/A	N/A
Social Studies Adolescence										
New Students	0	0	0	0	0	0	0	1	1	1
Continuing Students	0	2	2	1	1	0	0	0	1	1
Special Education Birth-2										
New Students	N/A	N/A	N/A	N/A	N/A	N/A	1	0	0	0
Continuing Students	N/A	N/A	N/A	N/A	N/A	N/A	1	1	0	1
Special Education Birth-6										
New Students	N/A	N/A	N/A	N/A	N/A	N/A	1	2	2	5
Continuing Students	N/A	N/A	N/A	N/A	N/A	N/A	3	3	6	6
Special Education Childhood										
New Students	3	2	3	3	6	2	1	2	6	2
Continuing Students	23	22	18	18	14	13	12	7	5	8
Special Education Adolescence										
New Students	0	3	1	6	4	4	3	2	4	3
Continuing Students	16	14	12	13	14	14	15	17	7	7
Early Childhood Literacy Education										
New Students	N/A	N/A	N/A	N/A	N/A	N/A	2	2	5	6
Continuing Students	N/A	N/A	N/A	N/A	N/A	N/A	11	5	3	4
Early Childhood Special Education										
New Students	N/A	N/A	N/A	N/A	N/A	3	6	4	7	7
Continuing Students	N/A	N/A	N/A	N/A	N/A	4	17	9	3	8

TABLE 3.6. GRADUATE ENROLLMENT IN GRADUATE SCHOOL OF EDUCATION FOR FALL SEMESTERS, 2005-2014 (CON'T)

Year	2005	2006	2007	2008	2009	2010	2011	2012	2013	2014
Educational Studies										
New Students	0	2	0	1	0	0	0	0	0	0
Continuing Students	12	7	6	3	9	5	8	7	5	3
Educational Studies New Orleans										
New Students	N/A	N/A	N/A	N/A	N/A	N/A	8	4	2	2
Continuing Students	N/A	N/A	N/A	N/A	N/A	N/A	0	8	5	5
Total	137	132	114	126	144	154	151	118	101	101
<i>% Change from Previous Year</i>	6.8%	-3.6%	-13.6%	10.5%	14.3%	6.9%	-1.9%	-21.9%	-14.4%	0%
EDUCATION THEORY AND PRACTICE - EDD										
New Students	2	4	2	3	5	3	2	5	5	6
Continuing Students	48	43	43	42	46	46	54	50	51	43
Total	50	47	45	45	51	49	56	55	56	49
<i>% Change from Previous Year</i>	8.7%	-6%	-4.3%	0%	13.3%	-3.9%	14.3%	-1.8%	1.8%	-12.5%

TABLE 3.7. GRADUATE ENROLLMENT IN SCHOOL OF MANAGEMENT FOR FALL SEMESTERS, 2005-2014

Year	2005	2006	2007	2008	2009	2010	2011	2012	2013	2014
ACCOUNTING										
MS										
New Students	16	18	40	63	57	135	108	156	144	170
Continuing Students	16	17	37	46	70	55	49	42	62	77
MS - 3-2 (Oneonta)										
New Students	0	0	N/A	N/A	N/A	N/A	N/A	1	0	0
Continuing Students	0	0	N/A	N/A	N/A	N/A	N/A	0	0	0
Total	32	35	77	109	127	190	157	199	206	247
<i>% Change from Previous Year</i>	-18%	9.4%	120%	41.6%	16.5%	49.6%	-17.4%	26.8%	3.5%	19.9%
FAST-TRACK - BS/ MBA										
New Students	10	12	9	9	8	8	7	4	4	8
Continuing Students	1	0	0	1	1	1	1	0	0	1
Total	11	12	9	10	9	9	8	4	4	9
<i>% Change from Previous Year</i>	N/A	9.1%	-25%	11.1%	-10%	0%	-11.1%	-50%	0%	125%
MANAGEMENT - PHD										
New Students	1	7	0	5	8	2	6	4	5	4
Continuing Students	15	13	18	14	16	19	17	20	23	19
Total	16	20	18	19	24	21	23	24	28	23
<i>% Change from Previous Year</i>	-5.9%	25%	-10%	5.6%	26.3%	-12.5%	9.5%	4.3%	16.7%	-17.9%

TABLE 3.7. GRADUATE ENROLLMENT IN SCHOOL OF MANAGEMENT FOR FALL SEMESTERS, 2005-2014 (CON'T)

Year	2005	2006	2007	2008	2009	2010	2011	2012	2013	2014
MASTER OF BUSINESS ADMINISTRATION										
Business Administration										
New Students	34	37	51	47	21	17	12	17	27	27
Continuing Students	48	41	41	53	53	34	20	17	25	31
Fast Track										
New Students	9	11	13	12	12	8	10	20	19	13
Continuing Students	0	0	0	2	3	0	0	0	1	2
Accelerated (Binghamton)										
New Students	4	7	6	6	10	5	3	1	3	4
Continuing Students	0	0	0	0	1	1	1	0	0	0
Fast-Track Professional (Manhattan)										
New Students	N/A	N/A	21	25	22	27	17	30	23	27
Continuing Students	N/A	N/A	0	2	1	1	0	1	0	1
Executive - Health Care										
New Students	3	0	3	0	5	0	1	0	0	0
Continuing Students	4	4	0	3	0	6	0	0	0	0
Executive (Manhattan)										
New Students	N/A	N/A	N/A	N/A	N/A	N/A	20	0	17	0
Continuing Students	N/A	N/A	N/A	N/A	N/A	N/A	0	19	0	17
Executive - Corporate										
New Students	28	0	11	15	7	0	14	0	0	0
Continuing Students	29	28	2	19	22	9	2	15	0	0
Total	159	128	148	184	157	108	100	120	115	122
<i>% Change from Previous Year</i>	<i>-8.1%</i>	<i>-19.5%</i>	<i>15.6%</i>	<i>24.3%</i>	<i>-14.7%</i>	<i>-31.2%</i>	<i>-7.4%</i>	<i>20.0%</i>	<i>-4.2%</i>	<i>6.1%</i>

TABLE 3.8. GRADUATE ENROLLMENT IN DECKER SCHOOL OF NURSING FOR FALL SEMESTERS, 2005-2014

Year	2005	2006	2007	2008	2009	2010	2011	2012	2013	2014
Nursing - MS										
New Students	8	11	6	11	19	18	11	0	0	1
Continuing Students	13	19	15	19	21	29	34	11	0	0
Family Nursing - MS										
New Students	2	7	12	13	13	15	31	15	0	0
Continuing Students	9	6	25	25	21	28	40	16	8	1
Family Nursing NP - MS										
New Students	N/A	N/A	N/A	N/A	N/A	N/A	N/A	36	42	28
Continuing Students	N/A	N/A	N/A	N/A	N/A	N/A	N/A	60	89	76
Family Nurse Practitioner - Certificate										
New Students	0	3	3	1	3	7	2	1	1	0
Continuing Students	3	1	4	5	3	15	6	4	4	3
Gerontology Nursing - MS										
New Students	1	1	2	1	1	2	0	0	0	0
Continuing Students	4	3	2	3	2	3	3	1	1	1
Gerontology Nurse Practitioner - MS										
New Students	1	0	1	0	0	0	0	0	4	3
Continuing Students	0	1	0	1	0	0	0	0	0	3
Gerontology Nurse Practitioner - Certificate										
New Students	N/A	N/A	N/A	N/A	N/A	N/A	N/A	N/A	N/A	0
Continuing Students	N/A	N/A	N/A	N/A	N/A	N/A	N/A	N/A	N/A	1
Community Health - MS										
New Students	2	3	3	0	1	0	4	2	0	0
Continuing Students	8	3	8	4	3	2	4	7	7	5
Community Health NP - MS										
New Students	N/A	N/A	N/A	N/A	N/A	N/A	N/A	1	1	3
Continuing Students	N/A	N/A	N/A	N/A	N/A	N/A	N/A	4	5	3
Community Health/Primary Care NP - Certificate										
New Students	0	0	1	0	0	0	0	0	0	1
Continuing Students	0	2	2	2	3	4	2	1	0	0
Psych Mental Health Nursing NP - MS										
New Students	N/A	N/A	N/A	N/A	N/A	0	4	3	4	6
Continuing Students	N/A	N/A	N/A	N/A	N/A	4	0	7	7	8
Psych Mental Health Nursing NP - Certificate										
New Students	N/A	N/A	N/A	N/A	N/A	1	1	1	1	1
Continuing Students	N/A	N/A	N/A	N/A	N/A	3	2	4	7	6
Nursing Education - Certificate										
New Students	N/A	N/A	N/A	N/A	N/A	0	0	0	0	0
Continuing Students	N/A	N/A	N/A	N/A	N/A	1	0	0	0	1

TABLE 3.8. GRADUATE ENROLLMENT IN DECKER SCHOOL OF NURSING FOR FALL SEMESTERS, 2005-2014 (CON'T)

Year	2005	2006	2007	2008	2009	2010	2011	2012	2013	2014
Forensic Health - Certificate										
New Students	N/A	N/A	N/A	N/A	N/A	N/A	N/A	N/A	0	0
Continuing Students	N/A	N/A	N/A	N/A	N/A	N/A	N/A	N/A	1	0
Total	51	60	84	85	90	132	144	174	182	151
<i>% Change from Previous Year</i>	<i>-5.5%</i>	<i>17.6%</i>	<i>40%</i>	<i>1.2%</i>	<i>5.9%</i>	<i>46.7%</i>	<i>9.1%</i>	<i>20.8%</i>	<i>4.6%</i>	<i>-17%</i>
DOCTOR OF NURSING PRACTICE										
Community Health NP										
New Students	N/A	N/A	N/A	N/A	N/A	N/A	0	0	1	0
Continuing Students	N/A	N/A	N/A	N/A	N/A	N/A	1	1	0	3
Community Health Clinical Nursing Specialist										
New Students	N/A	N/A	N/A	N/A	N/A	N/A	0	0	1	0
Continuing Students	N/A	N/A	N/A	N/A	N/A	N/A	1	1	0	0
Family NP										
New Students	N/A	N/A	N/A	N/A	N/A	N/A	1	1	0	0
Continuing Students	N/A	N/A	N/A	N/A	N/A	N/A	7	4	10	11
Family Psych Mental Health NP										
New Students	N/A	N/A	N/A	N/A	N/A	N/A	N/A	0	0	0
Continuing Students	N/A	N/A	N/A	N/A	N/A	N/A	N/A	2	3	1
Gerontological NP										
New Students	N/A	N/A	N/A	N/A	N/A	N/A	0	1	0	0
Continuing Students	N/A	N/A	N/A	N/A	N/A	N/A	1	1	2	0
Gerontological Clinical Nursing Specialist										
New Students	N/A	N/A	N/A	N/A	N/A	N/A	N/A	0	0	0
Continuing Students	N/A	N/A	N/A	N/A	N/A	N/A	N/A	1	1	1
Total	0	0	0	0	0	0	11	12	18	16
<i>% Change from Previous Year</i>	<i>N/A</i>	<i>N/A</i>	<i>N/A</i>	<i>N/A</i>	<i>N/A</i>	<i>N/A</i>	<i>N/A</i>	<i>9.1%</i>	<i>50%</i>	<i>-11.1%</i>
NURSING - PHD										
New Students	1	3	3	3	5	2	1	2	4	3
Continuing Students	22	22	26	28	23	25	30	29	29	32
Total	23	25	29	31	28	27	31	31	33	35
<i>% Change from Previous Year</i>	<i>8%</i>	<i>8.7%</i>	<i>16%</i>	<i>6.9%</i>	<i>-9.7%</i>	<i>-3.6%</i>	<i>14.8%</i>	<i>0%</i>	<i>6.5%</i>	<i>6.1%</i>

TABLE 3.9. GRADUATE ENROLLMENT IN COLLEGE OF COMMUNITY AND PUBLIC AFFAIRS FOR FALL SEMESTERS, 2005-2014

Year	2005	2006	2007	2008	2009	2010	2011	2012	2013	2014
PUBLIC ADMINISTRATION - MPA										
New Students	20	21	21	26	24	24	22	16	27	19
Continuing Students	56	58	54	55	60	62	48	46	35	39
Total	76	79	75	81	84	86	70	62	62	58
<i>% Change from Previous Year</i>	0%	3.9%	-5.1%	8%	3.7%	2.4%	-18.6%	-11.4%	0%	-6.5%
COMMUNITY AND PUBLIC AFFAIRS - PHD										
New Students	N/A	N/A	N/A	N/A	N/A	N/A	N/A	N/A	5	8
Continuing Students	N/A	N/A	N/A	N/A	N/A	N/A	N/A	N/A	5	16
Total	N/A	N/A	N/A	N/A	N/A	N/A	N/A	N/A	10	24
<i>% Change from Previous Year</i>	N/A	N/A	N/A	N/A	N/A	N/A	N/A	N/A	N/A	140%
SOCIAL SCIENCE - MA										
New Students	19	24	17	11	0	0	0	N/A	N/A	N/A
Continuing Students	79	59	28	35	5	1	0	N/A	N/A	N/A
Total	98	83	45	46	5	1	0	N/A	N/A	N/A
<i>% Change from Previous Year</i>	-3.9%	-15.3%	-45.8%	2.2%	-89.1%	-80%	-100%	N/A	N/A	N/A
SOCIAL WORK - MSW										
New Students	51	40	55	56	51	49	47	57	64	61
Continuing Students	76	90	70	86	82	94	88	80	79	81
Total	127	130	125	142	133	143	135	137	143	142
<i>% Change from Previous Year</i>	19.8%	2.4%	-3.8%	13.6%	-6.3%	7.5%	-5.6%	1.5%	4.4%	-0.7%
STUDENT AFFAIRS ADMINISTRATION - MS										
New Students	N/A	N/A	N/A	N/A	6	20	9	17	17	19
Continuing Students	N/A	N/A	N/A	N/A	28	24	29	24	32	21
Total	N/A	N/A	N/A	N/A	34	44	38	41	49	40
<i>% Change from Previous Year</i>	N/A	N/A	N/A	N/A	N/A	29.4%	-13.6%	7.9%	19.5%	-18.4%

TABLE 3.10. GRADUATE ENROLLMENT IN GRADUATE SCHOOL MATERIALS SCIENCE AND ENGINEERING FOR FALL SEMESTERS, 2005-2014

Year	2005	2006	2007	2008	2009	2010	2011	2012	2013	2014
Materials Science and Eng - MS										
New Students	N/A	N/A	N/A	N/A	N/A	N/A	1	2	1	8
Continuing Students	N/A	N/A	N/A	N/A	N/A	N/A	1	3	1	2
Materials Science and Eng - PhD										
New Students	N/A	N/A	N/A	N/A	N/A	4	4	9	3	6
Continuing Students	N/A	N/A	N/A	N/A	N/A	33	28	29	28	29
Total	N/A	N/A	N/A	N/A	N/A	37	34	43	33	45
<i>% Change from Previous Year</i>	<i>N/A</i>	<i>N/A</i>	<i>N/A</i>	<i>N/A</i>	<i>N/A</i>	<i>N/A</i>	<i>-8.1%</i>	<i>26.5%</i>	<i>-23.3%</i>	<i>36.4%</i>

TABLE 3.11. INTERNATIONAL GRADUATE ENROLLMENT FOR FALL SEMESTERS, 2005-2014

Year	2005	2006	2007	2008	2009	2010	2011	2012	2013	2014
Total University Enrollment	2,844	2,850	2,920	3,098	3,054	3,109	2,950	2,975	3,083	3,323
Total Full-Time Enrollment	1,619	1,636	1,703	1,786	1,831	1,869	1,570	1,527	1,784	1,924
International Enrollment	776	804	929	1025	974	945	879	882	1,067	1,321
<i>% Change from Previous Year</i>	<i>-0.8%</i>	<i>3.6%</i>	<i>15.5%</i>	<i>10.3%</i>	<i>-5%</i>	<i>-3%</i>	<i>-7%</i>	<i>0.3%</i>	<i>21%</i>	<i>23.8%</i>
<i>% of Total University</i>	<i>27%</i>	<i>28%</i>	<i>32%</i>	<i>33%</i>	<i>32%</i>	<i>30%</i>	<i>30%</i>	<i>30%</i>	<i>35%</i>	<i>40%</i>
International Full-Time Enrollment	570	614	705	757	707	643	508	535	698	901
<i>% of Total Full-Time</i>	<i>35%</i>	<i>38%</i>	<i>41%</i>	<i>42%</i>	<i>39%</i>	<i>34%</i>	<i>32%</i>	<i>35%</i>	<i>39%</i>	<i>47%</i>

FIGURE 3.2. GRADUATE ENROLLMENT FOR FALL SEMESTERS, 2005-2014

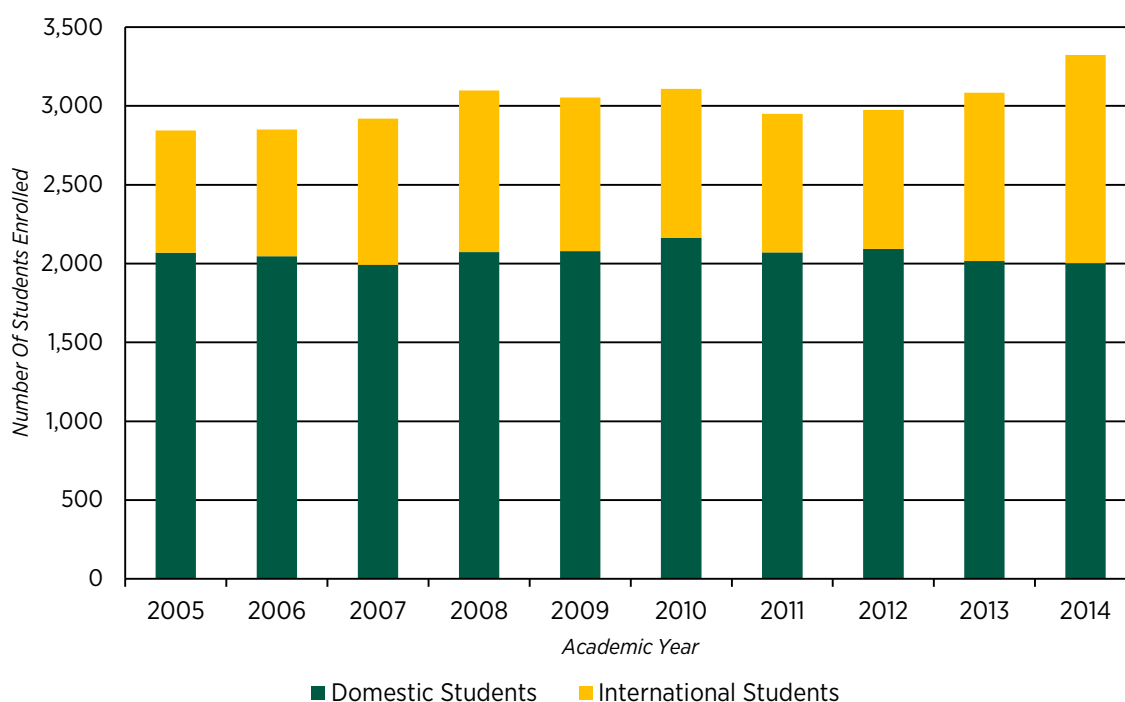


TABLE 3.12. INTERNATIONAL GRADUATE ENROLLMENT BY SCHOOL FOR FALL SEMESTERS, 2005-2014

Year	2005	2006	2007	2008	2009	2010	2011	2012	2013	2014
HARPUR COLLEGE OF ARTS & SCIENCES										
Total	315	317	329	336	330	317	330	327	336	366
<i>% of International Students</i>	40.6%	39.4%	35.4%	32.8%	33.9%	33.5%	37.5%	37.1%	31.5%	27.7%
WATSON SCHOOL OF ENGINEERING										
Total	348	377	445	485	473	452	400	387	505	688
<i>% of International Students</i>	45%	47%	48%	47%	49%	48%	46%	44%	47%	52%
SCHOOL OF MANAGEMENT										
Total	84	81	128	162	147	118	85	96	152	189
<i>% of International Students</i>	11%	10%	14%	16%	15%	12%	10%	11%	14%	14%
SCHOOL OF EDUCATION										
Total	7	5	4	6	7	4	7	6	5	6
<i>% of International Students</i>	1%	0.6%	0.4%	0.6%	0.7%	0.4%	0.8%	0.7%	0.5%	0.5%
DECKER SCHOOL OF NURSING										
Total	5	7	9	9	5	2	6	10	13	13
<i>% of International Students</i>	0.6%	0.8%	1.0%	0.9%	0.5%	0.2%	0.7%	1.1%	1.2%	1%
COLLEGE OF COMMUNITY AND PUBLIC AFFAIRS										
Total	N/A	6	4	7	9	12	18	17	15	12
<i>% of International Students</i>	N/A	0.7%	0.4%	0.7%	0.9%	1.3%	2.0%	1.9%	1.4%	0.9%
GRADUATE SCHOOL										
Total	N/A	N/A	N/A	N/A	N/A	27	27	32	26	36
<i>% of International Students</i>	N/A	N/A	N/A	N/A	N/A	2.9%	3.1%	3.6%	2.4%	2.7%
NON-DEGREE										
Total	14	9	10	20	4	4	6	7	15	11
<i>% of International Students</i>	1.8%	1.1%	1.1%	2.0%	0.4%	0.4%	0.7%	0.8%	1.4%	0.8%

PART 4: DEGREES CONFERRED

TABLE 4.1. GRADUATE DEGREES CONFERRED FOR ACADEMIC YEARS, 2005-2006 THROUGH 2014-2015

Year	05-06	06-07	07-08	08-09	09-10	10-11	11-12	12-13	13-14	14-15	Total
Doctoral Degrees	135	109	117	125	93	140	150	145	179	138	1,331
Master's Degrees	648	685	644	761	733	897	835	831	842	1,027	7,903

TABLE 4.2. GRADUATE DEGREES CONFERRED FOR ACADEMIC YEARS BY DEGREE, 2005-2006 THROUGH 2014-2015

Year	05-06	06-07	07-08	08-09	09-10	10-11	11-12	12-13	13-14	14-15
DOCTORAL DEGREES										
DNP	N/A	N/A	N/A	N/A	N/A	N/A	3	2	6	7
EdD	8	5	5	2	2	1	3	3	8	5
PhD	127	104	112	123	91	139	144	140	165	126
Total Doctorates	102	109	117	125	125	93	140	143	173	138
<i>% Change</i>	<i>1%</i>	<i>7%</i>	<i>7%</i>	<i>7%</i>	<i>0%</i>	<i>-26%</i>	<i>51%</i>	<i>2%</i>	<i>21%</i>	<i>-20%</i>
MASTER'S DEGREES										
MA	210	188	174	152	119	123	119	126	118	128
MAT	41	34	44	51	53	52	34	29	25	31
MBA	88	119	79	112	117	90	68	85	74	92
MEng	15	8	11	16	13	8	6	13	8	2
MM	14	15	6	11	13	6	5	8	7	8
MPA	28	28	22	26	29	33	29	29	28	29
MS	197	185	220	273	298	456	445	432	492	635
MSEd	55	53	47	51	54	78	71	61	34	40
MSW	NA	55	41	69	37	51	58	48	56	62
Total Master's	648	685	644	761	733	897	835	831	842	1027
<i>% Change</i>	<i>12%</i>	<i>6%</i>	<i>-6%</i>	<i>18%</i>	<i>-4%</i>	<i>22%</i>	<i>-7%</i>	<i>0%</i>	<i>1%</i>	<i>22%</i>
TOTAL GRADUATE										
Degrees Conferred	750	794	761	886	858	990	975	974	1,015	1,165
<i>% Change</i>	<i>10%</i>	<i>6%</i>	<i>-4%</i>	<i>16%</i>	<i>-3%</i>	<i>15%</i>	<i>-2%</i>	<i>0%</i>	<i>4%</i>	<i>15%</i>

FIGURE 4.1. MASTER'S DEGREES CONFERRED BY DEGREE TYPE, 2014-2015

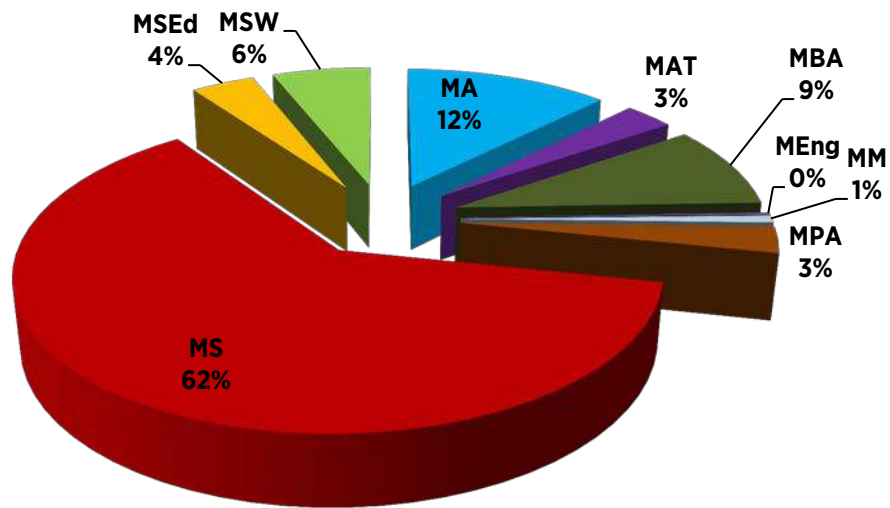


TABLE 4.3. MASTER OF SCIENCE (MS) DEGREES CONFERRED FOR ACADEMIC YEARS, 2005-2006 THROUGH 2014-2015

Year	05-06	06-07	07-08	08-09	09-10	10-11	11-12	12-13	13-14	14-15
Anthropology	10	7	3	10	2	12	6	8	10	9
Bioengineering	NA	NA	2	1	1	1	5	8	4	10
Biological Sciences	6	5	6	4	1	9	4	0	6	1
Chemistry	6	1	0	0	0	3	3	0	3	3
Computer Science	55	69	66	85	69	96	88	65	79	155
Education	6	6	5	4	7	6	7	16	7	7
Electrical and Comp Eng	30	23	21	17	34	55	43	36	47	97
Geology	NA	2	2	2	4	3	0	5	4	3
Management - Accounting	20	9	33	44	77	153	136	144	139	186
Mechanical Engineering	10	9	11	11	14	10	45	21	18	24
Materials Engineering	1	1	1	2	1	0	4	8	2	1
Materials Science	3	1	1	1	NA	NA	NA	NA	NA	NA
Nursing	19	18	20	40	32	31	39	54	66	61
Physics	2	4	3	1	4	1	0	1	4	3
Psychology	0	9	16	9	16	16	9	20	8	15
Behavioral Neuroscience	0	1	6	2	5	4	0	0	0	0
Clinical Psychology	0	6	6	6	7	11	0	0	0	0
Cognitive Psychology	0	2	4	1	4	1	0	0	0	0
Student Affairs Administration	0	0	0	0	0	17	13	17	27	15
System Sci and Ind Eng	24	23	30	35	27	43	43	29	68	45

TABLE 4.4. MASTER OF ARTS (MA) DEGREES CONFERRED FOR ACADEMIC YEARS, 2005-2006 THROUGH 2014-2015

Year	05-06	06-07	07-08	08-09	09-10	10-11	11-12	12-13	13-14	14-15
Anthropology	14	15	11	16	12	11	8	8	13	12
Art History	0	0	0	2	3	1	2	6	4	3
Asian and Asian American Studies	NA	NA	NA	NA	NA	NA	NA	NA	NA	6
Biological Sciences	1	6	7	9	8	10	7	8	10	10
Chemistry	0	3	1	5	4	0	1	2	1	0
Comparative Literature	8	9	5	9	3	5	2	8	8	6
Economics	7	20	13	13	11	13	23	13	9	12
English	28	28	19	19	14	17	11	16	13	13
Geology	5	0	0	1	1	0	0	0	0	0
Geography	14	1	12	11	3	9	14	15	10	18
History	8	6	18	17	11	4	13	13	7	13
Human Development Education	59	5	34	15	8	2	0	0	0	0
Mathematical Sciences	13	63	10	8	13	12	14	8	14	15
Philosophy	5	0	5	1	1	2	0	0	0	0
Philosophy - PIC	1	4	4	2	9	2	1	1	0	0
Philosophy - SPEL	4	1	4	4	3	7	6	5	2	4
Physics	NA	NA	NA	NA	NA	NA	NA	NA	NA	1
Political Science	3	8	15	12	6	12	2	6	14	8
Psychology	15	6	0	0	0	0	0	0	0	0
Behavioral Neuroscience	5	1	0	0	0	0	0	0	0	0
Clinical Psychology	7	5	0	0	0	0	0	0	0	0
Cognitive Psychology	3	0	0	0	0	0	0	0	0	0
Romance Languages	4	3	7	3	5	5	3	0	0	3
French	0	0	1	0	0	1	0	0	0	1
Italian	1	1	1	1	1	3	0	0	0	1
Spanish	3	2	5	2	4	1	3	0	0	1
Sociology	6	0	8	1	1	7	11	10	8	4
Theatre	5	1	1	3	3	4	1	7	5	0

TABLE 4.5. DOCTORAL DEGREES CONFERRED IN 2014-2015 AND CUMULATIVE DEGREES BY PROGRAM

	Program Registration Year	Degrees Conferred 2014 - 2015	Cumulative Degrees Conferred
GRADUATE SCHOOL OF EDUCATION			
Educational Theory and Practice	1992	5	69
GRADUATE SCHOOL			
Materials Science and Engineering	2010	8	35
HARPUR SCHOOL OF ARTS AND SCIENCES			
Anthropology	1969	11	222
Art History	1969	2	88
Biological Sciences	1968	5	161
Chemistry	1967	7	271
Comparative Literature	1967	0	190
Economics	1968	9	265
English	1965	6	317
Geological Sciences	1967	1	91
Geography	1967	0	5
History	1966	7	265
Materials Science (Shifted to MSE 2010)	2002	0	8
Mathematical Sciences	1968	4	168
Philosophy (1980-1990)	1968	1	159
Philosophy - PIC track		0	72
Philosophy - SPEL track	2000	1	25
Physics (Deactivated 1977); Reactivated 2010	1967	2	23
Political Science	1969	5	182
Psychology	1967	10	152*
Behavioral Neuroscience		2	52 ¹
Clinical Psychology		7	145 ²
Cognitiv Psychology		1	52 ³
Romance Languages & Literature		0	0
French (Deactivated 1980)	1967	0	9
Italian (Deactivated 1975)	1967	0	0
Spanish (Deactivated 1975)	1967	0	5
Sociology	1971	6	198
Translation, Research & Instruction		0	22**

* Degrees conferred before Fall 1992

** Degrees conferred since Fall 1999

¹ Degrees conferred since Fall 1992² Degrees conferred since Fall 1992³ Degrees conferred since Fall 1993

TABLE 4.5. DOCTORAL DEGREES CONFERRED IN 2014-2015 AND CUMULATIVE DEGREES BY PROGRAM (CON'T)

	Program Registration Year	Degrees Conferred 2014 - 2015	Cumulative Degrees Conferred
SCHOOL OF MANAGEMENT			
Management	1991	7	51
DECKER SCHOOL OF NURSING			
Nursing Practice		7	18
Advanced Studies in Nursing	1998	6	50
WATSON SCHOOL OF ENGINEERING			
Advanced Technology	1975	0	95
Biomedical Engineering	2007	2	8
Computer Science	1993	7	95
Electrical Engineering	1994	7	87
Industrial Engineering	1994	6	59
Materials Engineering (Shifted to MSE 2010)		0	3
Mechanical Engineering	1994	6	74
Systems Science	1994	1	72
Total		138	3,766

TABLE 4.6. GRADUATE DEGREES CONFERRED IN COLLEGE OF COMMUNITY AND PUBLIC AFFAIRS FOR ACADEMIC YEARS, 2005-2006 THROUGH 2014-2015

Year	05-06	06-07	07-08	08-09	09-10	10-11	11-12	12-13	13-14	14-15
MPA	28	28	22	25	29	33	29	29	28	29
MSAA	58	64	35	15	7	2	0	0	0	0
MSW	29	55	41	69	37	51	58	48	56	62
MS	N/A	N/A	N/A	8	9	17	13	17	27	15

TABLE 4.7. GRADUATE DEGREES CONFERRED IN GRADUAE SCHOOL OF EDUCATION FOR ACADEMIC YEARS, 2005-2006 THROUGH 2014-2015

Year	05-06	06-07	07-08	08-09	09-10	10-11	11-12	12-13	13-14	14-15
MA	3	1	0	1	1	0	0	0	0	0
MAT	38	36	44	51	53	52	34	29	25	31
MS	7	6	5	4	7	6	7	16	7	7
MSEd	55	53	47	51	54	78	71	61	34	40
EdD	8	5	5	2	2	1	3	3	8	5

TABLE 4.8. GRADUATE DEGREES CONFERRED IN GRADUATE SCHOOL - MATERIALS SCIENCE AND ENGINEERING, FOR ACADEMIC YEARS 2005-2006 THROUGH 2014-2015

Year	05-06	06-07	07-08	08-09	09-10	10-11	11-12	12-13	13-14	14-15
MS	N/A	N/A	N/A	N/A	0	0	4	8	2	1
PhD	N/A	N/A	N/A	N/A	2	6	6	10	3	8

TABLE 4.9. GRADUATE DEGREES CONFERRED IN HARPUR COLLEGE OF ARTS AND SCIENCES FOR ACADEMIC YEARS, 2005-2006 THROUGH 2014-2015

Year	05-06	06-07	07-08	08-09	09-10	10-11	11-12	12-13	13-14	14-15
Anthropology										
MA	14	20	11	17	12	11	8	8	13	12
PhD	5	9	8	4	6	10	4	4	5	11
Biomedical Anthropology										
MS	N/A	N/A	4	9	2	12	6	8	10	9
Art History										
MA	0	0	0	2	3	1	2	6	4	3
PhD	8	2	3	1	5	2	2	2	5	2
Biological Sciences										
MA	0	6	7	9	8	10	7	8	10	10
MS	0	5	6	4	1	9	4	0	6	1
PhD	0	2	3	6	4	3	4	10	8	5
Chemistry										
MA	0	5	1	5	4	0	1	2	1	0
MS	5	2	0	0	0	3	3	0	3	3
PhD	8	10	10	5	7	6	8	5	15	7
Comparative Literature										
MA	10	9	6	9	3	5	2	8	8	6
PhD	8	9	5	3	1	7	4	3	4	0
Economics										
MA	7	20	13	13	11	13	23	13	9	12
PhD	6	4	5	3	4	6	11	13	4	9
English										
MA	28	30	19	19	14	17	11	16	13	13
PhD	7	10	13	13	10	13	14	14	15	6
Geography										
MA	15	6	12	11	3	9	14	15	10	18
Geological Sciences										
MA	9	3	2	3	1	0	0	0	0	0
MS	N/A	N/A	N/A	N/A	4	3	0	5	4	3
PhD	2	2	2	2	0	2	0	0	4	1
History										
MA	7	5	18	17	11	4	13	13	7	13
PhD	6	7	5	7	3	5	19	4	13	7
Materials Sciences										
MS	N/A	N/A	1	1	0	0	N/A	N/A	N/A	N/A
PhD	3	1	1	2	0	0	N/A	N/A	N/A	N/A

TABLE 4.9. GRADUATE DEGREES CONFERRED IN HARPUR COLLEGE OF ARTS AND SCIENCES FOR ACADEMIC YEARS, 2005-2006 THROUGH 2014-2015 (CON'T)

Year	05-06	06-07	07-08	08-09	09-10	10-11	11-12	12-13	13-14	14-15
Mathematical Sciences										
MA	11	12	10	8	13	12	14	8	14	15
PhD	5	2	7	4	6	6	6	5	7	4
Music										
MM	14	16	6	11	13	6	5	8	7	8
Philosophy										
MA	4	0	5	1	1	2	0	0	0	0
PhD	0	0	0	0	0	0	0	0	0	0
Philosophy - SPEL										
MA	4	1	4	4	3	7	6	5	2	4
PhD	1	0	1	2	2	5	4	3	3	1
Philosophy - PIC										
MA	1	4	4	2	9	2	1	1	0	0
PhD	4	7	5	5	1	8	4	7	6	0
Physics										
MA	N/A	N/A	N/A	N/A	N/A	N/A	N/A	N/A	N/A	1
MS	2	4	3	1	4	1	0	1	4	3
PhD	N/A	N/A	N/A	N/A	N/A	0	0	0	1	2
Political Science										
MA	3	8	15	12	6	12	2	6	14	8
PhD	7	4	2	3	1	6	5	6	4	5
Psychology										
MA	15	6	0	0	0	0	0	0	0	0
MS	0	9	16	9	16	16	9	20	8	15
PhD	18	8	8	11	10	15	10	9	11	10
Psych - Behavioral Neuroscience										
MA	5	1	0	0	0	0	0	0	0	0
MS	0	1	6	2	5	4	0	0	0	0
PhD	3	2	2	4	1	5	3	3	4	2
Psych - Clinical										
MA	7	5	0	0	0	0	0	0	0	0
MS	0	6	6	6	7	11	0	0	0	0
PhD	11	5	5	6	5	9	5	4	5	7
Psych - Cognitive										
MA	3	0	0	0	0	0	0	0	0	0
MS	0	2	4	1	4	1	0	0	0	0
PhD	4	1	1	1	4	1	2	2	2	1

TABLE 4.9. GRADUATE DEGREES CONFERRED IN HARPUR COLLEGE OF ARTS AND SCIENCES FOR ACADEMIC YEARS, 2005-2006 THROUGH 2014-2015 (CON'T)

Year	05-06	06-07	07-08	08-09	09-10	10-11	11-12	12-13	13-14	14-15
French										
MA	0	0	1	0	0	1	0	0	0	1
Italian										
MA	1	1	1	1	1	3	0	0	0	1
Spanish										
MA	3	2	5	2	4	1	3	0	0	1
Sociology										
MA	7	0	8	1	1	7	11	10	8	4
PhD	11	4	6	7	3	8	4	3	3	6
Theater										
MA	5	1	1	3	3	4	1	7	5	0
Translation Studies										
PhD	2	0	0	2	3	2	2	5	4	0
Harpur School Total										
MA	144	139	143	139	111	121	119	126	118	122
MS	7	20	30	24	27	44	22	34	35	34
MM	14	16	6	11	13	6	5	8	7	8
PhD	101	81	84	80	66	104	101	93	112	76

TABLE 4.10. GRADUATE DEGREES CONFERRED IN SCHOOL OF MANAGEMENT FOR ACADEMIC YEARS, 2005-2006 THROUGH 2014-2015

Year	05-06	06-07	07-08	08-09	09-10	10-11	11-12	12-13	13-14	14-15
MS - Accounting	20	9	33	44	77	153	136	144	139	186
MBA	88	119	79	112	117	90	68	85	74	92
PhD	2	0	4	2	1	6	2	1	5	7

TABLE 4.11. GRADUATE DEGREES CONFERRED IN DECKER SCHOOL OF NURSING FOR ACADEMIC YEARS, 2005-2006 THROUGH 2014-2015

Year	05-06	06-07	07-08	08-09	09-10	10-11	11-12	12-13	13-14	14-15
MS	12	18	20	40	32	31	39	54	66	61
PhD	4	5	3	6	1	4	2	3	4	6
DNP	N/A	N/A	N/A	N/A	N/A	N/A	3	2	6	7

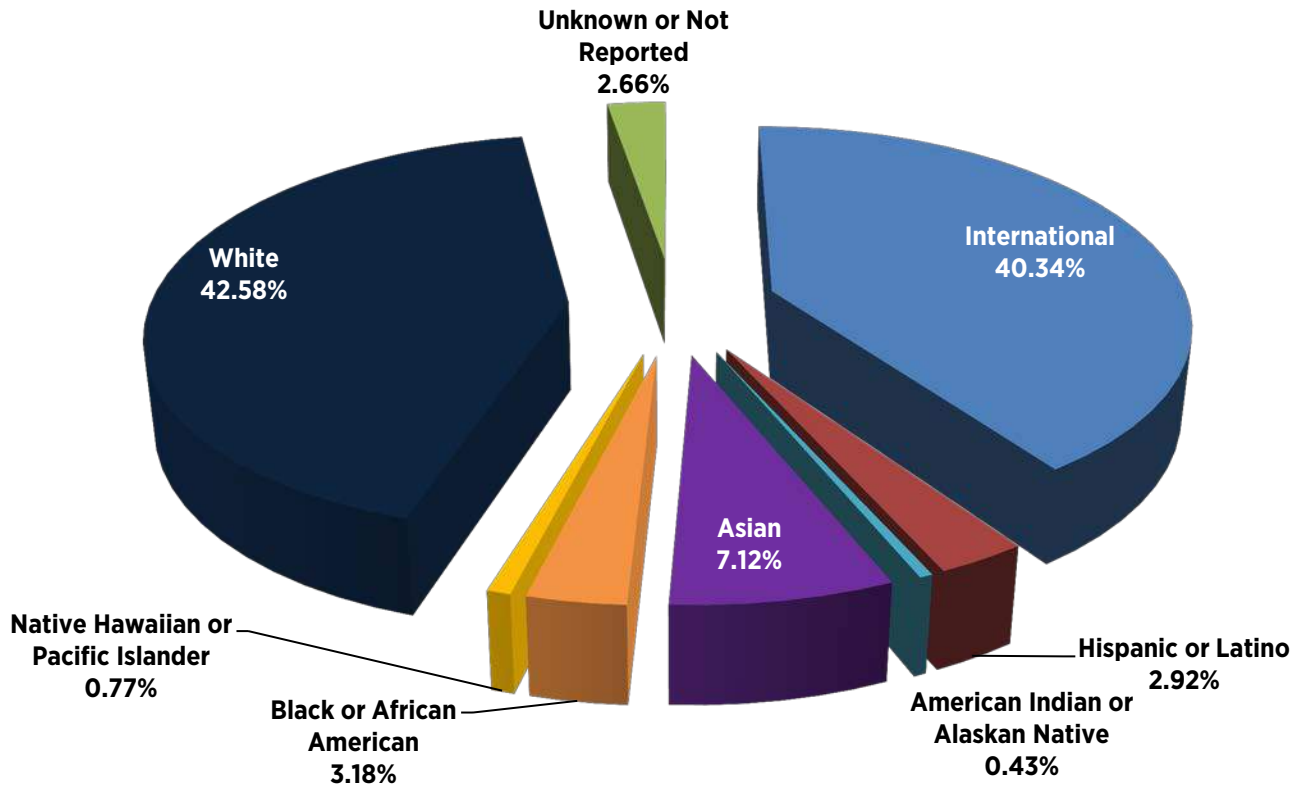
TABLE 4.12. GRADUATE DEGREES CONFERRED IN WATSON SCHOOL OF ENGINEERING FOR ACADEMIC YEARS, 2005-2006 THROUGH 2014-2015

Year	05-06	06-07	07-08	08-09	09-10	10-11	11-12	12-13	13-14	14-15
Biomedical Engineering										
MS	NA	NA	0	1	1	1	5	8	4	10
PhD	NA	NA	1	2	1	0	0	0	2	2
Computer Science										
MS	56	70	66	85	69	96	88	65	79	155
PhD	4	7	7	6	5	3	9	9	9	7
Computer Engineering										
MEng	0	0	3	1	1	0	1	3	2	1
Electrical Engineering										
MS	35	23	21	17	34	55	43	36	47	97
MEng	14	7	7	15	12	6	3	7	5	0
PhD	4	3	1	6	5	4	4	8	6	7
Industrial Engineering										
MS	22	19	21	31	23	37	36	23	52	39
MEng	0	0	0	0	0	0	0	0	1	0
PhD	N/A	N/A	N/A	9	2	6	10	8	10	6
Materials Engineering										
MS	0	1	1	2	1	0	0	0	0	0
PhD	1	0	1	1	0	0	0	0	0	0
Mechanical Engineering										
MS	10	8	11	11	14	10	45	21	18	24
MEng	1	1	1	0	0	2	0	0	0	0
PhD	2	3	4	5	5	6	9	5	8	6
Systems Science										
MS	8	6	11	4	4	6	7	6	16	6
MEng	N/A	N/A	N/A	N/A	N/A	N/A	2	3	0	1
PhD	9	5	6	6	3	0	1	3	6	1
Watson School Total										
MS	131	127	131	151	146	205	224	159	216	331
MEng	15	8	11	16	13	8	6	13	8	2
PhD	20	18	20	35	23	19	33	33	41	29

TABLE 4.13. GRADUATE DEGREES CONFERRED BY DEMOGRAPHIC CATEGORY FOR ACADEMIC YEARS, 2010-2011 THROUGH 2014-2015

Year	10-11		11-12		12-13		13-14		14-15	
	Female	Male	Female	Male	Female	Male	Female	Male	Female	Male
International	106	193	94	177	105	153	105	186	175	295
Hispanic or Latino	24	22	11	11	25	16	22	21	19	15
American Indian or Alaskan Native	1	1	1	1	2	1	0	2	4	1
Asian	26	36	25	43	24	36	32	30	39	44
Black or African American	21	9	13	6	14	11	20	18	23	14
Native Hawaiian or Pacific Islander	N/A	N/A	0	1	10	15	6	8	3	6
White	269	223	225	224	274	250	269	222	255	241
Unknown or Not Reported	50	56	77	76	22	18	46	34	15	16
Total	497	540	446	539	476	500	500	521	533	632

FIGURE 4.2. DEGREE COMPLETION BY ETHNICITY, 2014-2015



PART 5: TIME TO DEGREE

TABLE 5.1. AVERAGE TIME TO TERMINAL MASTER'S DEGREE BY PROGRAM FOR ACADEMIC YEARS, 2010-2011 THROUGH 2014-2015

Program	Degree	Time to Degree
CCPA		
Human Development	MA	3.0
Public Administration	MPA	2.7
Social Work	MSW	2.7
Student Affairs Administration	MS	2.5
GD CCPA Average		2.7
Graduate School of Education		
MA in Teaching	MAT	1.7
MS in Educational Studies	MSEd	2.2
MS in Education	MS	2.5
GD Education Average		2.1
Graduate School - Materials Science and Engineering		
Materials Science and Engineering	MS	2.7
GD Grad School Average		2.7
Harpur School of Arts and Sciences		
Anthropology - MA	MA	4.4
Anthropology - MS	MS	1.9
Art History	MA	2.5
Asian and Asian American Studies	MA	2.0
Biological Sciences - MA	MA	1.1
Biological Sciences - MS	MS	2.5
Chemistry - MS	MS	1.8
Comparative Literature	MA	1.7
Economics	MA	1.8
English	MA	2.1
Geological Sciences - MS	MS	5.6
Geography	MA	2.1
History	MA	2.0
Mathematical Sciences	MA	2.5
Music	MM	2.1
Philosophy - SPEL	MA	1.8
Physics	MS	2.0
Political Science	MA	1.8
Romance Languages	MA	2.4
Sociology	MA	1.5
Theatre	MA	2.8
GD Harpur Average		2.2

TABLE 5.1. AVERAGE TIME TO TERMINAL MASTER'S DEGREE BY PROGRAM FOR ACADEMIC YEARS, 2010-2011 THROUGH 2014-2015 (CON'T)

Program	Degree	Time to Degree
School of Management		
Master of Business Administration	MBA	1.6
MS in Accounting	MS	1.3
GD Management Average		1.4
Decker School of Nursing		
MS in Nursing	MS	2.7
GD Nursing Average		2.7
Watson School of Engineering		
Bioengineering	MS	2.2
Computer Science	MS	2.6
Electrical and Computer Engineering - MENG	MEng	2.7
Electrical and Computer Engineering - MS	MS	2.2
Mechanical Engineering - MENG	MEng	1.6
Mechanical Engineering - MS	MS	1.9
Systems Science Industrial Engineering - MENG	MEng	2.3
Systems Science Industrial Engineering - MS	MS	2.3
GD Watson Average		2.4
UNIVERSITY AVERAGE		2.1

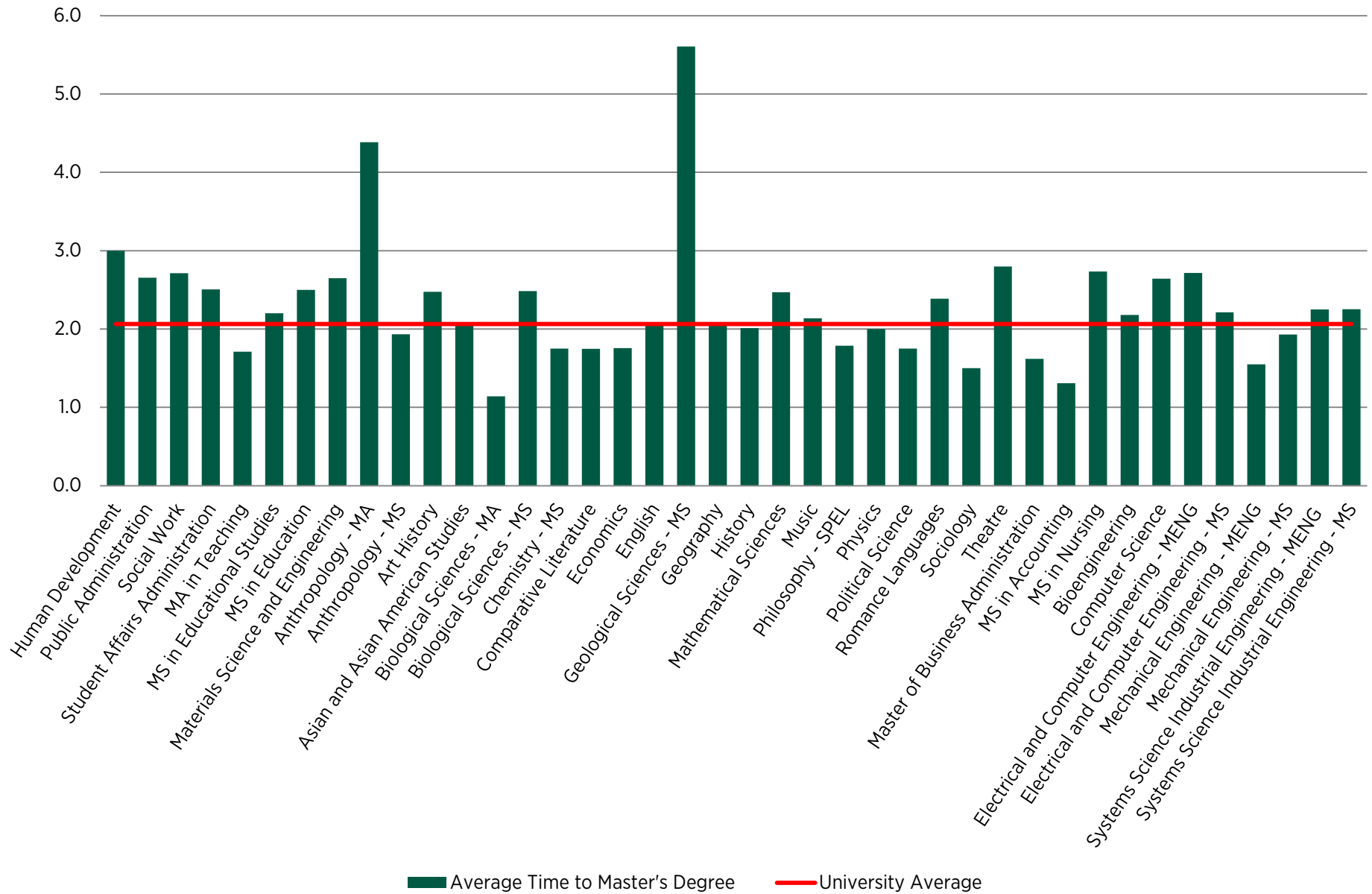
FIGURE 5.1. AVERAGE TIME TO TERMINAL MASTER'S DEGREE BY PROGRAM FOR ACADEMIC YEARS, 2010-2011 THROUGH 2014-2015

TABLE 5.2. AVERAGE TIME TO DOCTORAL DEGREE BY PROGRAM FOR ACADEMIC YEARS, 2010-2011 THROUGH 2014-2015

Program	Degree	Time to Degree
Graduate School of Education		
Educational Theory and Practice	EdD	8.4
GD Education Average		8.4
Graduate School Materials Science and Engineering		
Materials Science and Engineering	PhD	5.6
GD Grad School Average		5.6
Harpur School of Arts and Sciences		
Anthropology	PhD	9.9
Art History	PhD	8.7
Biological Sciences	PhD	5.5
Chemistry	PhD	5.8
Comparative Literature	PhD	7.9
Economics	PhD	6.2
English	PhD	6.0
Geological Sciences	PhD	5.8
History	PhD	8.4
Mathematical Sciences	PhD	6.2
Philosophy - SPEL	PhD	7.5
Philosophy - PIC	PhD	8.8
Physics	PhD	5.75
Political Science	PhD	6.6
Psychology	PhD	6.7
Sociology	PhD	11.2
Translation Studies	PhD	5.0
GD Harpur Total		7.2
School of Management		
PhD in Management	PhD	5.3
GD Management Total		5.3
Decker School of Nursing		
Nursing Practice	DNP	3.8
Advanced Studies in Nursing	PhD	7.1
GD Nursing Total		5.5

TABLE 5.2. AVERAGE TIME TO DOCTORAL DEGREE BY PROGRAM FOR ACADEMIC YEARS, 2010-2011 THROUGH 2014-2015 (CON'T)

Program	Degree	Time to Degree
Watson School of Engineering		
Bioengineering	PhD	5.7
Computer Science	PhD	7.1
Electrical and Computer Engineering	PhD	6.2
Mechanical Engineering	PhD	5.4
Systems Science and Industrial Engineering	PhD	5.6
GD Watson Total		6.0
UNIVERSITY AVERAGE		6.8

FIGURE 5.2. AVERAGE TIME TO DOCTORAL DEGREE BY PROGRAM FOR ACADEMIC YEARS, 2010-2011 THROUGH 2014-2015

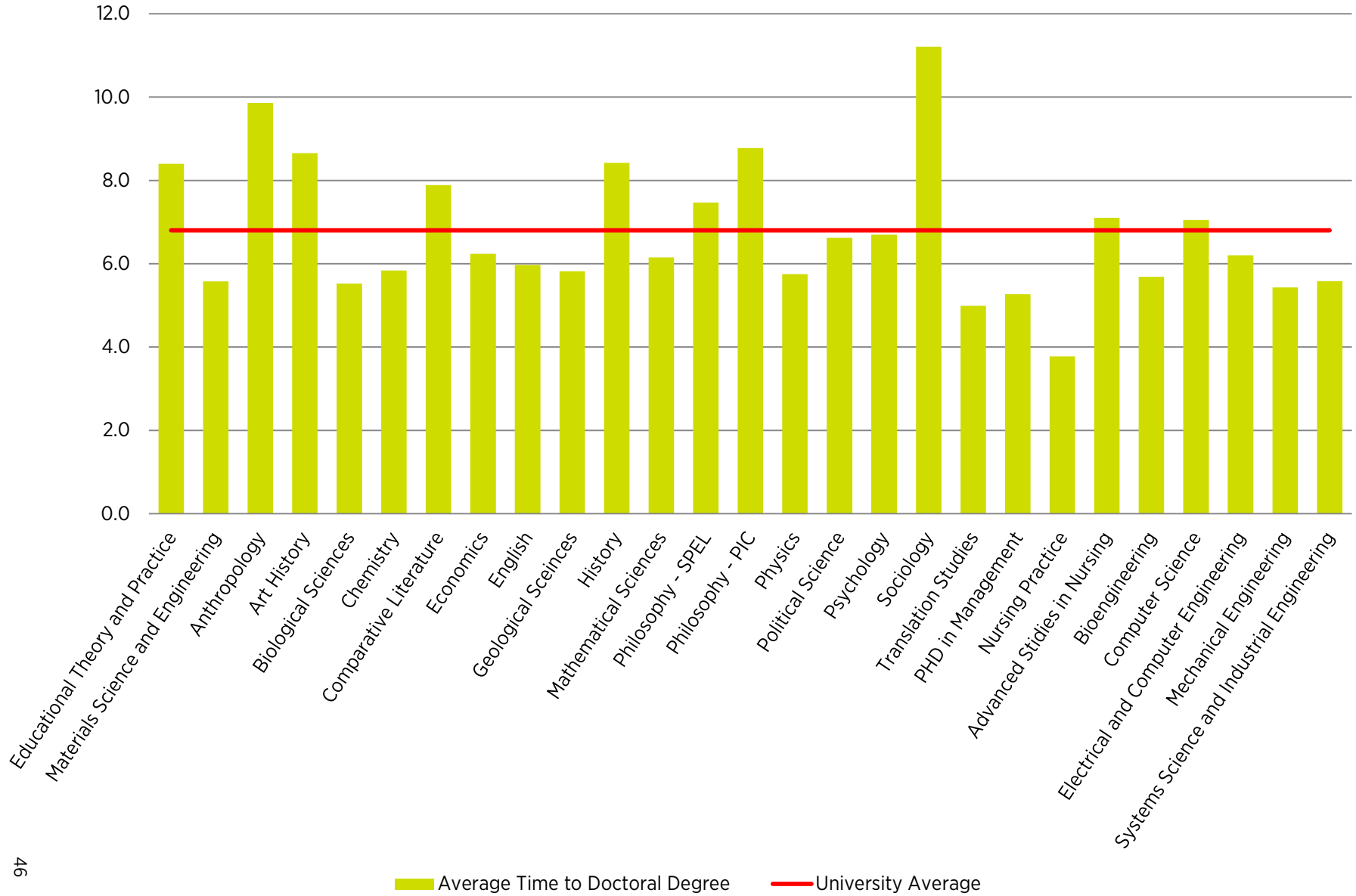
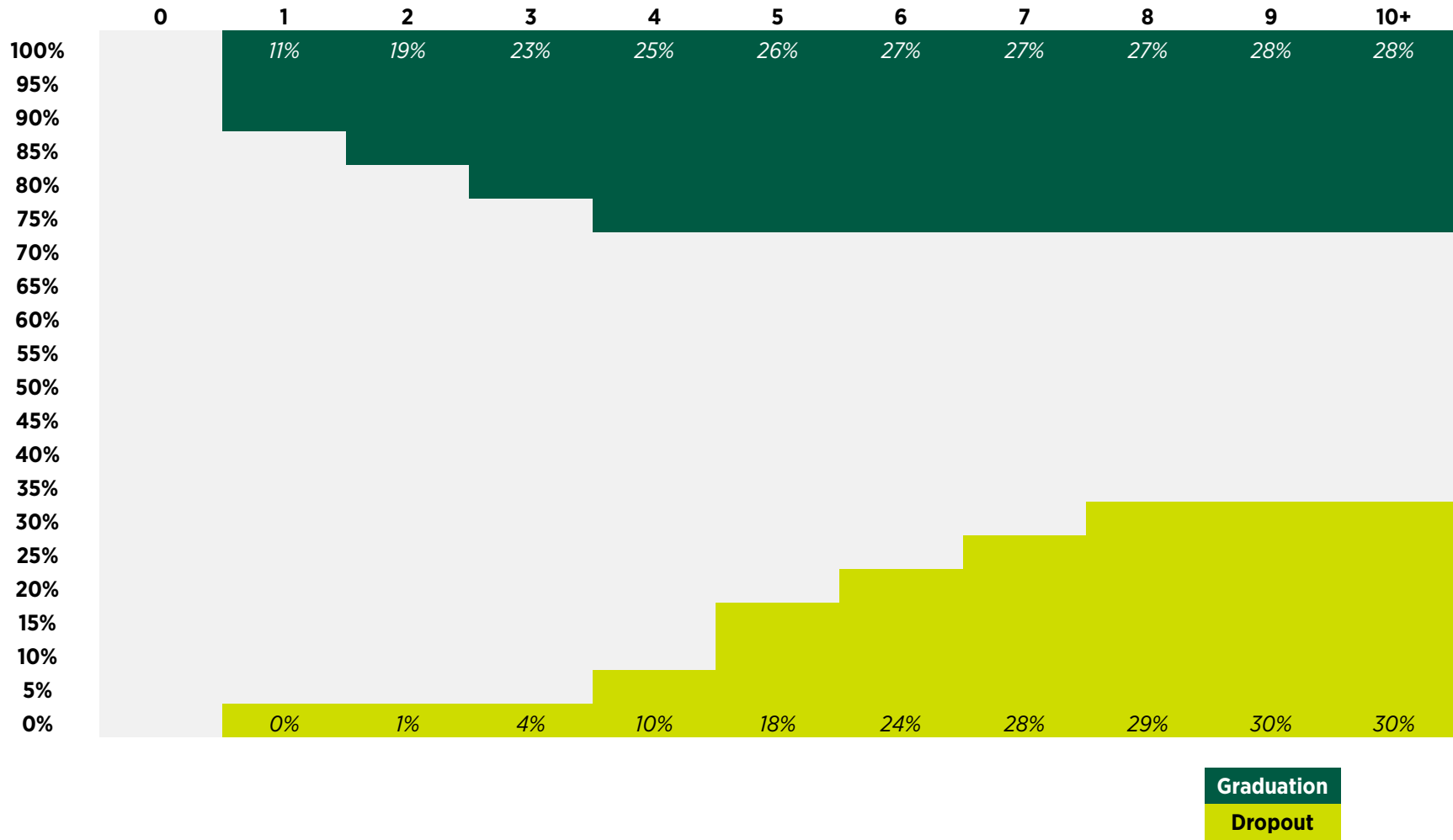


TABLE 5.3. OUTCOMES OF DOCTORAL STUDENTS BY YEAR IN PROGRAM (KAPLAN-MEIER METHOD) FOR ACADEMIC YEARS, 2004-2015

Year in Program	# of Students in Cohort	# of Dropouts	Probability of Dropout	# of Graduates	Probability of Graduation
1	1,876	200	11%	2	0%
2	1,674	159	9%	20	1%
3	1,495	76	5%	54	4%
4	1,365	37	3%	110	8%
5	1,218	18	1%	149	12%
6	1,051	13	1%	123	12%
7	915	6	1%	61	7%
8	848	6	1%	27	3%
9	815	3	0%	9	1%
10+	803	0	0%	3	0%
Summary Kaplan-Meier Statistic of Success (Graduation or Continuation)					71%

FIGURE 5.3. OUTCOMES OF STUDENTS ENTERING DOCTORAL PROGRAM FOR ACADEMIC YEARS, 2004-2015



PART 6: FINANCIAL SUPPORT

TABLE 6.1. FINANCIAL SUPPORT FOR FALL SEMESTERS FOR ACADEMIC YEARS, 2010-2014

Year	2010	2011	2012	2013	2014
Funded Master's Students	266	301	314	336	327
Total Master's Students	1,678	1,508	1,525	1,666	1,862
<i>% of Master's Students Funded</i>	15.9%	20%	20.6%	20.2%	17.6%
<i>% Change from the Previous Year</i>	-8.6%	13.2%	4.3%	7%	-2.7%
Funded Doctoral Students	698	750	756	723	753
Total Doctoral Students	1,267	1,278	1,287	1,278	1,300
<i>% of Doctoral Students Funded</i>	55.1%	58.7%	58.7%	56.6%	57.9%
<i>% Change from the Previous Year</i>	0.6%	7.4%	0.8%	-4.4%	4.1%
Total Funded Students	964	1,051	1,070	1,059	1,080
Total Degree Students	2,945	2,786	2,812	2,944	3,162
<i>% of Students Funded</i>	32.7%	37.7%	38.1%	36%	34.2%
<i>% Change from the Previous Year</i>	-2.1%	9%	1.8%	-1%	2%

FIGURE 6.1. FINANCIAL SUPPORT FOR FALL SEMESTERS FOR ACADEMIC YEARS 2010-2014

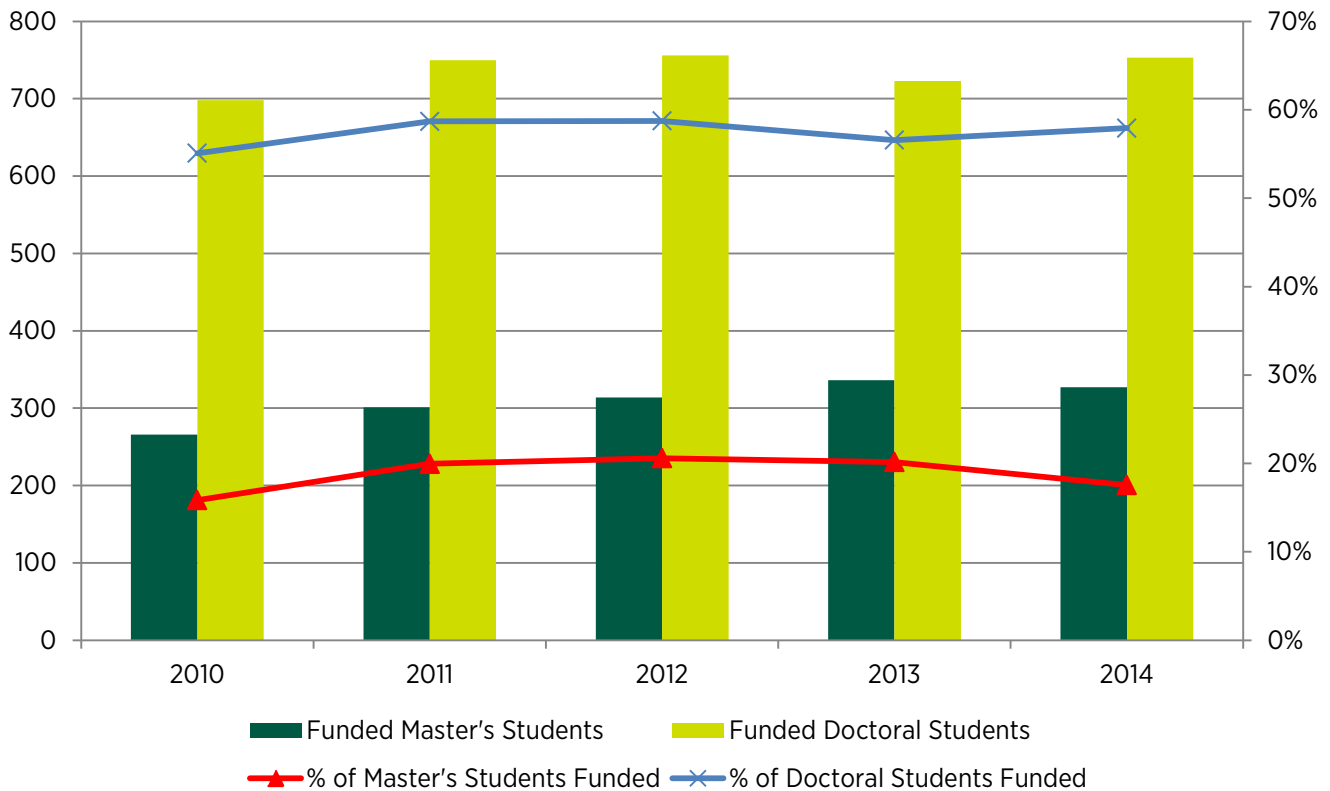


TABLE 6.2. DOCTORAL STUDENTS BY TYPE OF FUNDING, FALL 2014

	Fellowship	GA/TA	Research Assistant	Tuition Only	Self-Funded	Total
COLLEGE OF COMMUNITY AND PUBLIC AFFAIRS						
Public Administration	0	6	0	0	18	24
Social Work	0	0	0	0	0	
Student Affairs Administration	0	0	0	0	0	
Total	0	6	0	0	18	24
Graduate School of Education						
Total	1	10	0	0	38	49
GRADUATE SCHOOL MATERIALS SCIENCE AND ENGINEERING						
Materials Science and Engineering	0	10	21	0	4	35
HARPUR COLLEGE OF ARTS AND SCIENCES						
Anthropology	3	40	0	2	75	120
Asian and Asian American Studies	0	0	0	0	0	
Art History	0	13	0	1	11	25
Biological Sciences	0	36	3	0	14	53
Chemistry	0	41	7	0	3	51
Comparative Literature	1	20	0	0	29	50
Economics	1	33	1	1	5	41
English	1	38	0	0	30	69
Geological Science	0	4	1	0	9	14
Geography	0	0	0	0	0	
History	1	42	0	0	25	68
Mathematical Sciences	0	44	1	1	11	57
Music	0	0	0	0	0	
Philosophy - SPEL	0	24	0	0	11	35
Philosophy - PIC	4	1	0	1	10	16
Physics	0	24	5	0	3	32
Political Science	1	23	4	0	14	42
Psychology	0	54	14	1	19	88
Romance Languages	0	0	0	0	0	
Sociology	0	23	1	1	43	68
Theatre	0	0	0	0	0	
Translation Studies	2	4	0	0	21	27
Total	14	464	37	8	333	856
SCHOOL OF MANAGEMENT						
Total	0	17	0	1	5	23
DECKER SCHOOL OF NURSING						
Total	1	11	0	4	35	51
WATSON SCHOOL OF ENGINEERING						
Bioengineering	0	7	5	1	8	21
Computer Science	0	19	11	1	24	55
Electrical and Computer Engineering	0	15	18	0	32	65
Mechanical Engineering	0	13	16	0	13	42
Systems Science and Industrial Engineering	1	21	20	0	37	79
Total	1	75	70	2	114	262
Grand Total	17	593	128	15	547	1,300

FIGURE 6.2. DOCTORAL STUDENTS BY TYPE OF FUNDING, FALL 2014

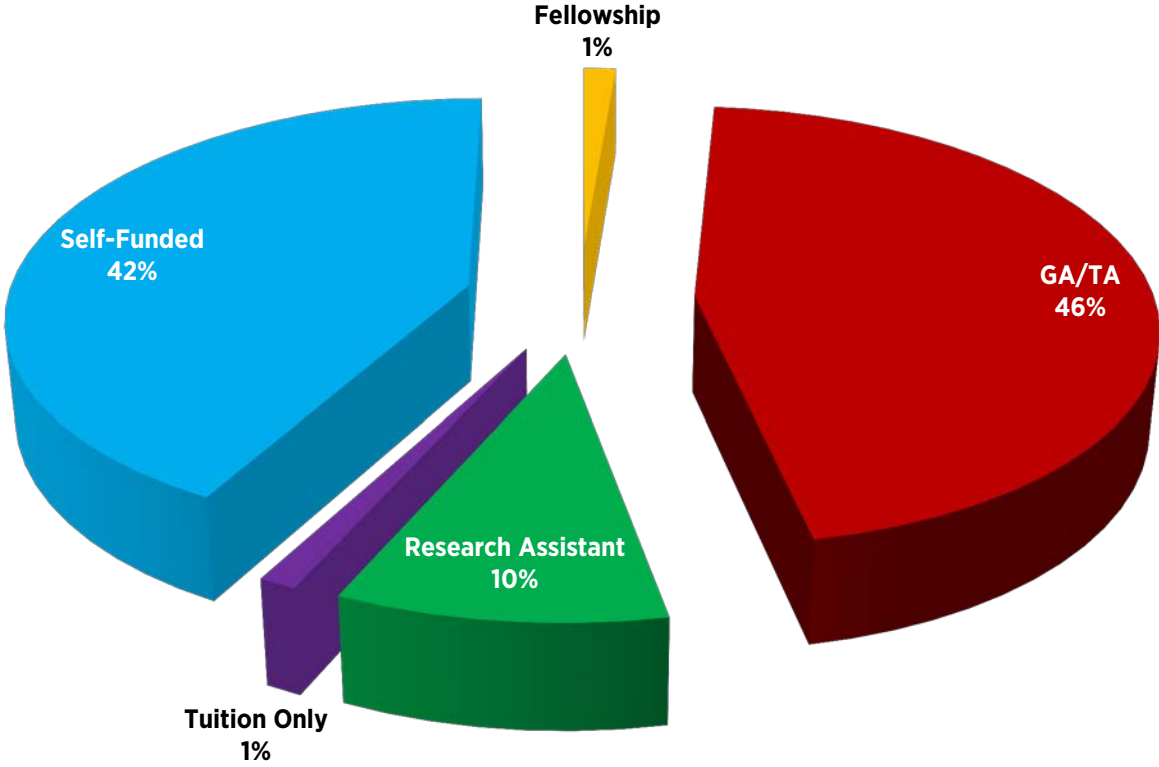


TABLE 6.3. MASTER'S STUDENTS BY TYPE OF FUNDING, FALL 2014

	Fellowship	GA/TA	Research Assistant	Tuition Only	Self-Funded	Total
COLLEGE OF COMMUNITY AND PUBLIC AFFAIRS						
Public Administration	0	10	0	3	44	57
Social Work	26	18	0	3	95	142
Student Affairs Administration	0	16	0	18	6	40
Total	26	44	0	24	145	239
GRADUATE SCHOOL OF EDUCATION						
Total	1	11	0	0	146	158
GRADUATE SCHOOL MATERIALS SCIENCE AND ENGINEERING						
Materials Science and Engineering	0	1	0	0	9	10
Harpur College of Arts and Sciences						
Anthropology	0	4	0	1	22	27
Asian and Asian American Studies	0	0	0	0	14	14
Art History	1	2	0	0	2	5
Biological Sciences	0	1	0	1	10	12
Chemistry	0	1	0	0	3	4
Comparative Literature	2	4	0	3	2	11
Economics	1	0	0	0	23	24
English	3	4	0	0	13	20
Geological Science	0	7	1	0	4	12
Geography	0	13	0	0	21	34
History	1	4	0	0	5	10
Mathematical Sciences	0	2	0	0	13	15
Music	0	12	0	0	5	17
Philosophy - SPEL	0	0	0	0	1	1
Philosophy - PIC	0	0	0	0	0	
Physics	0	0	0	0	3	3
Political Science	1	0	0	0	3	4
Psychology	0	0	0	0	0	
Romance Languages	0	0	0	0	6	6
Sociology	0	1	0	0	1	2
Theatre	0	2	0	0	2	4
Translation Studies	0	0	0	0	0	
Total	9	57	1	5	153	225
SCHOOL OF MANAGEMENT						
Total	0	26	0	1	351	378
DECKER SCHOOL OF NURSING						
Total	0	2	0	18	118	138
WATSON SCHOOL OF ENGINEERING						
Bioengineering	0	3	2	0	23	28
Computer Science	3	23	5	0	271	302
Electrical and Computer Engineering	0	10	7	1	133	151
Mechanical Engineering	0	6	4	0	46	56
Systems Science and Industrial Engineering	1	10	25	1	140	177
Total	4	52	43	2	613	714
Grand Total	40	193	44	50	1,535	1,862

FIGURE 6.3. MASTER'S STUDENTS BY TYPE OF FUNDING, FALL 2014

