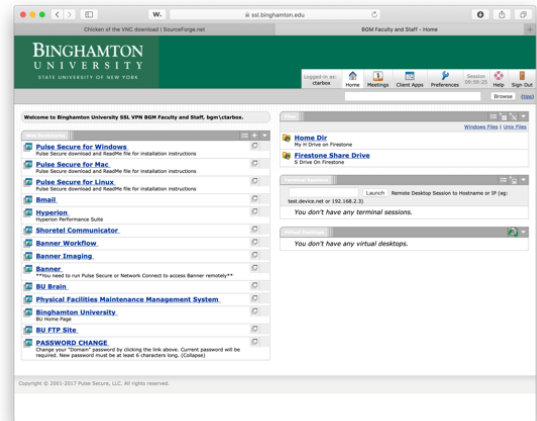


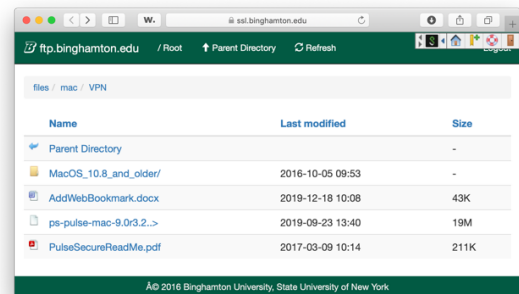
Install and Setup Pulse Secure on Your Remote Mac

Pulse Secure is a client application that easily connects you to the Binghamton University Virtual Private Network (VPN). You can get the client installer by going to: <https://ssl.binghamton.edu>.



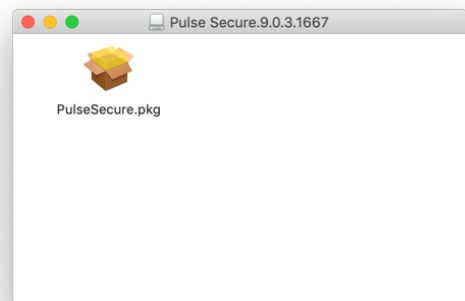
If your remote macOS is 10.10 or lower, click on the link [MacOS_10.10_and_lower](#)

If your off-campus macOS is 10.11 or higher, click on the link 'Pulse Secure for Mac'. Then click on the [ps-pulse-mac-9.0r3.2.>](#) directory.



This will initiate a download to your default download location (usually your Downloads folder). Locate this file and open it. Double click the .pkg file and follow the installation instructions.

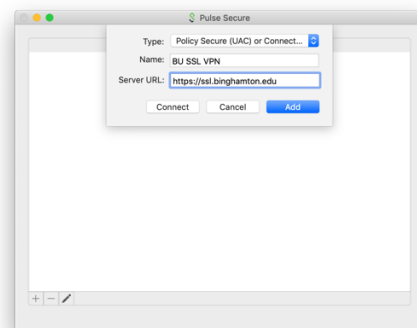
You will need the computer's Administrator Account password for the Remote Mac.



You will find *Pulse Secure* in your Applications folder. Launch it. *Pulse Secure* may prompt for control access. Click 'OK'.

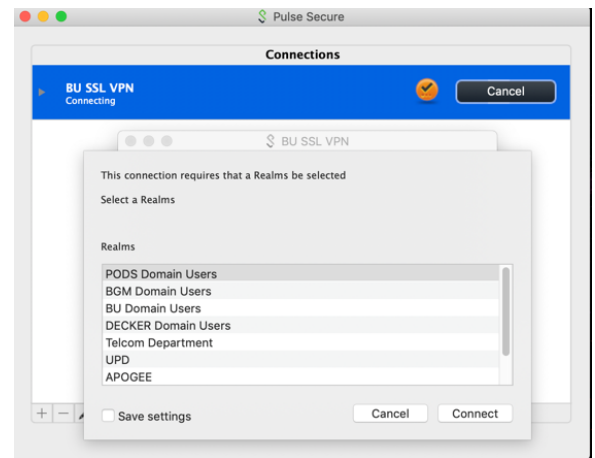
Add a connection by clicking on the '+' in the bottom left hand corner.

Type: Policy Secure (UAC) or Connect Secure (VPN)
Name: Give a descriptive name like BU SSL VPN
Server URL: <https://ssl.binghamton.edu>
Click 'Add'



Click 'Connect' and choose the Realm **"BU Domain Users"**.
Tick 'Save settings' to remember this choice, and click 'Connect'

Enter your BU Domain user name and password. You can 'save settings' to remember these credentials. Once connected you will see the *Pulse Secure* icon in your menu bar with a green arrow.



Now that you are connected to the VPN, it's just like your home computer is on the campus network giving you additional access to other campus resources.

When you are finished, remember to close the connection to *Pulse Secure* by going to the *Pulse Secure* icon in the upper right-hand corner of your Menu Bar and choose 'Disconnect'.

Now that everything is set up, the next time you need to initiate a connection to the BU VPN go to the Menu Bar of your computer, click on the Pulse Secure icon, and choose 'BU SSL VPN' then Connect. Put in your User Name and Password if you did not save it.

