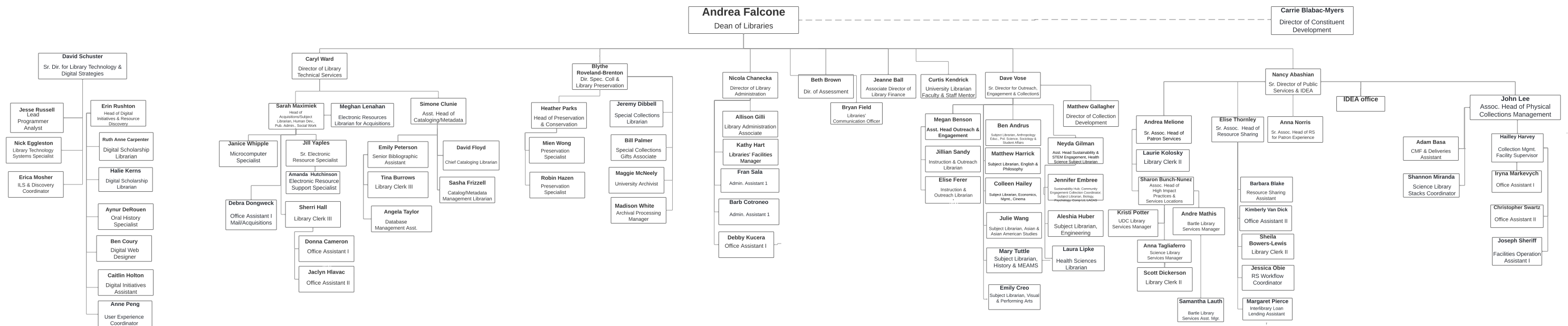


Current as of: 3/15/24

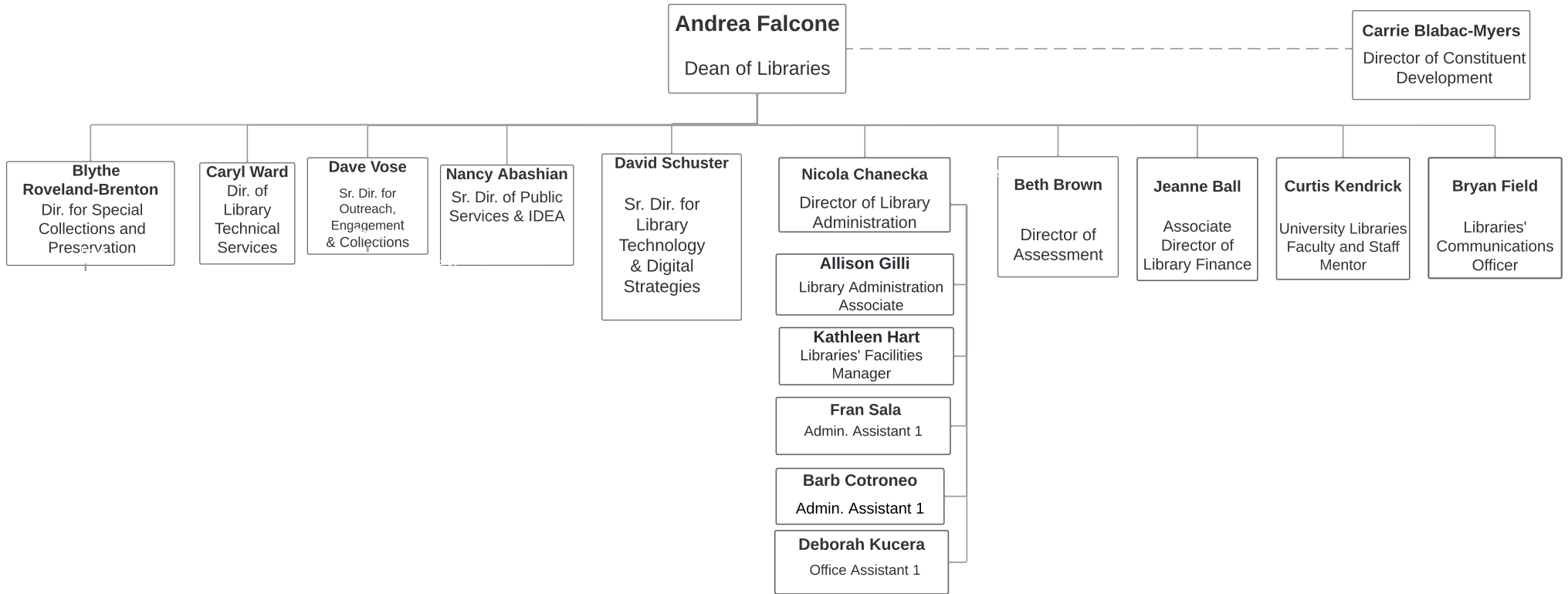
BINGHAMTON UNIVERSITY LIBRARIES



Current as of: 3/15/24

BINGHAMTON UNIVERSITY LIBRARIES

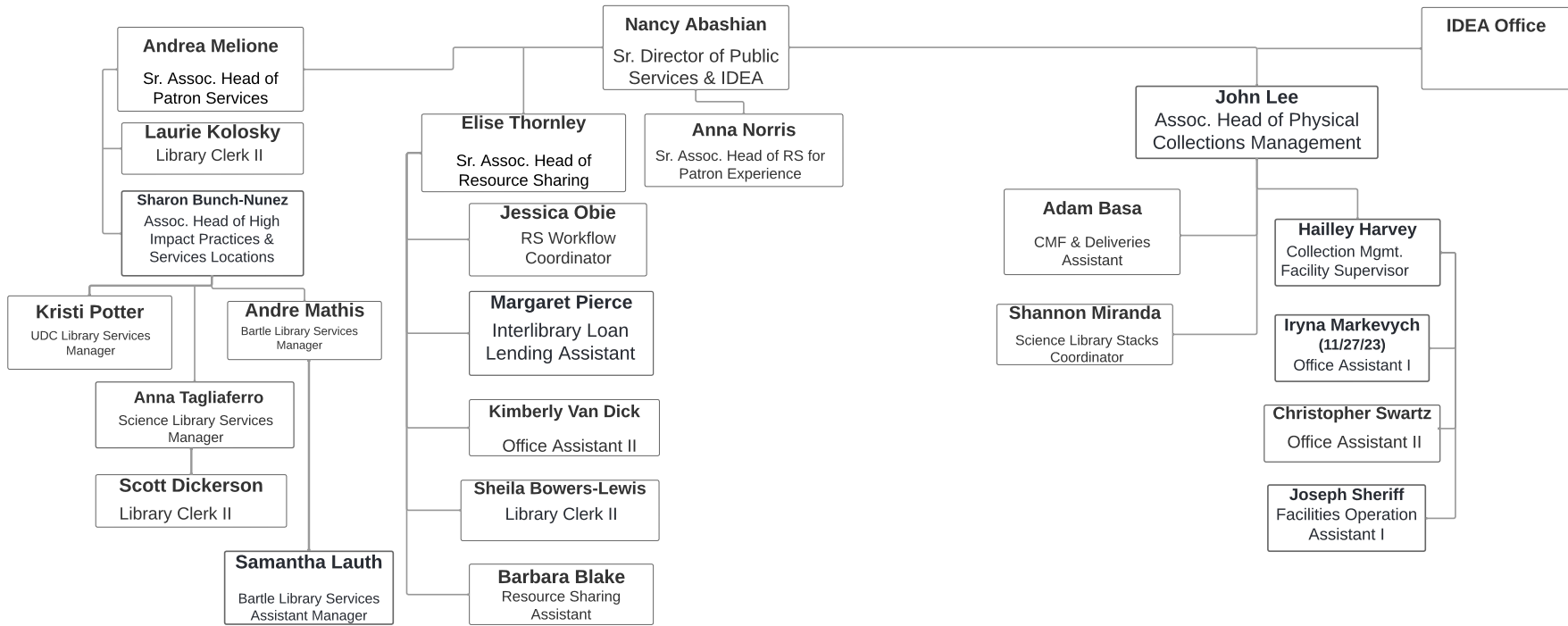
Administration



Current as of: 3/15/24

BINGHAMTON UNIVERSITY LIBRARIES

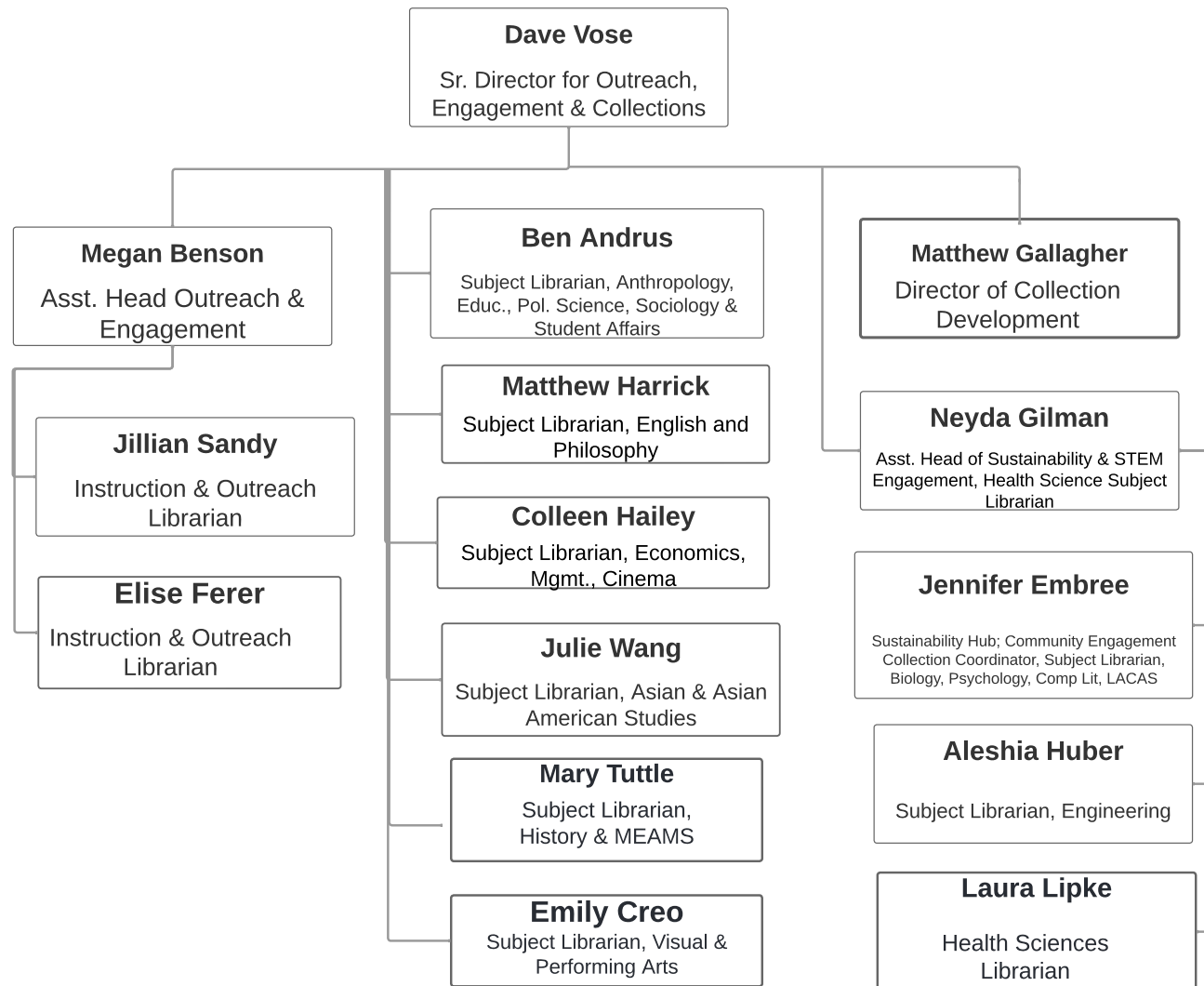
Public Services & Inclusion, Diversity, Equity & Accessibility



BINGHAMTON UNIVERSITY LIBRARIES

Current as of: 3/15/24

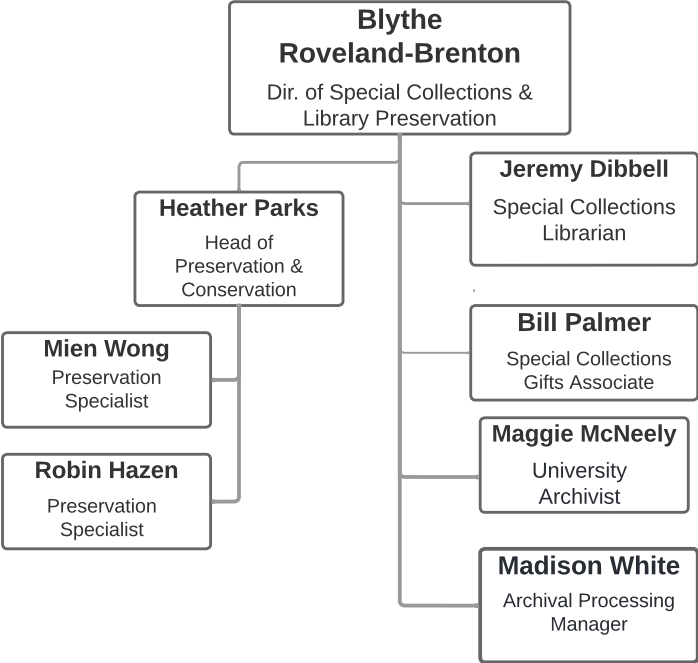
Outreach, Engagement & Collections



Current as of: 3/15/24

BINGHAMTON UNIVERSITY LIBRARIES

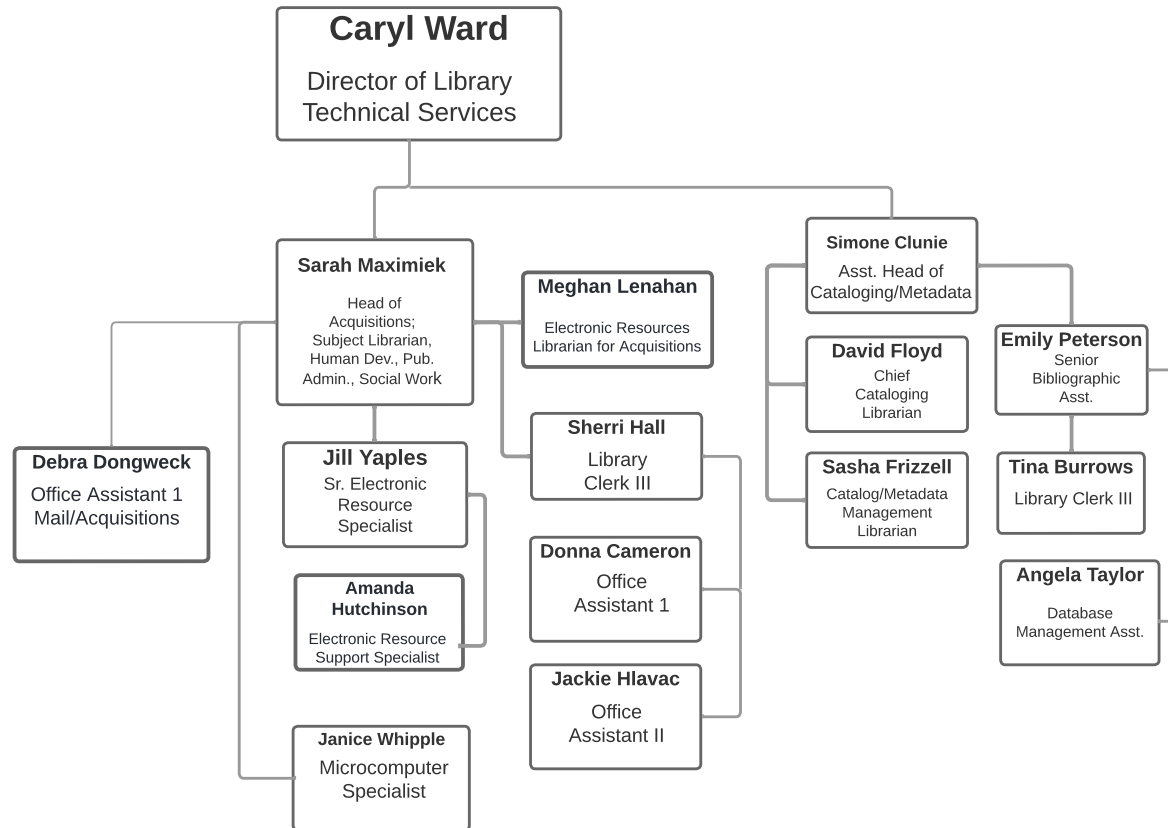
Special Collections and Preservation



Current as of: 3/15/24

BINGHAMTON UNIVERSITY LIBRARIES

Technical Services



BINGHAMTON UNIVERSITY LIBRARIES

Current as of: 3/15/24

Library Technology and Digital Strategies

