



BINGHAMTON
UNIVERSITY
STATE UNIVERSITY OF NEW YORK

FINANCIAL REPORT 2020–2025

REPORT FROM THE PRESIDENT,
PROVOST, AND CHIEF FINANCIAL OFFICER

JANUARY 2026

TO BINGHAMTON UNIVERSITY COLLEAGUES:

This 2020–2025 Financial Report is the tenth in a series of annual reports informing the campus community about the fiscal status of Binghamton University. The content of this report tabulates and presents campus revenues, expenditures, and enrollment for academic years 2020-21 through 2024-25.

The primary takeaway from this report is that Binghamton University is in a strong financial position. Enrollment has been steady at more than 18,000 undergraduate and graduate students for the past six years. The University continues to receive record-breaking application totals from prospective students, including 74,725 applications for fall 2025 enrollment. We anticipate tuition revenue, the University’s single largest source, to remain sturdy in the years ahead as Binghamton’s quality and value attracts the best and brightest students.

Binghamton is grateful and fortunate for the support it receives from the State University of New York and the New York State Legislature. The biggest change in the 2024-25 budget is a 16.5% increase from the previous year in legislative appropriation, which now totals more than \$60 million. This support has allowed the University to add faculty in key research areas, and staff who provide essential support to students.

Support to campus through philanthropic giving is key to Binghamton’s financial strength as well. Foundation expenditures on behalf of our colleges and schools have increased by 93.7% between 2021 and 2025, and we are excited about the potential for

additional giving allowing the University to grow further.

The strategic planning process, which will be

complete by the end of the spring 2026 semester, will help the University identify, define, and guide strategic investments for Binghamton’s future. Updates on strategic planning and Binghamton’s revised priorities will be shared with you throughout 2026.

Sincerely,

Anne D'Alleva
President

Donald Hall
Provost and Executive Vice President
for Academic Affairs

John Cordi
Chief Financial Officer and Senior Associate
Vice President



INCOME

There are six types of income received by the University: State Purpose, State University Tuition Reimbursement Account (SUTRA), Income Fund Reimbursement (IFR), Dormitory Income Fund Reimbursement (DIFR), Research Foundation Income (RF) and Binghamton University Foundation Income (BUF). Additional information and definitions of terms are available on the Business Affairs State Operating Budget website, at binghamton.edu/operations/policies/policy-200.html.

EXPENSES AND ENROLLMENT

For the most part, the University spends the income received in each of the six categories during the year the income is received. State Purpose funds (legislative appropriation and tuition) must be spent within the year they are received and must follow state expenditure rules and procedures. SUTRA, IFR and DIFR income are also state funds and therefore must follow state expenditure rules and procedures. RF funds are slightly more flexible than state funds; however, they must follow the rules and procedures of the funding agency, which can be the federal government, state government, private

foundations or corporations. BUF funds are more flexible than RF funds; however, they must follow the restrictions of donors, IRS guidelines and Foundation policies.

SUTRA, IFR, DIFR, RF and BUF funds do not have to be spent in the year they are received and can be carried forward from one year to the next. However, IFR and DIFR balances are observable by SUNY and the state Budget Office and can be considered reserves that should be spent before asking for additional state allocations.



UNIVERSITY EXPENDITURES:

University expenditures for the past five years, 2020–21 to 2024–25, are shown in Table 1. Between 2020–21 and 2024–25, total expenditures for Binghamton University

have grown by \$186 million (48%). The revenue for these expenditures came from growth in IFR (\$62.7 million), tuition (\$21.1 million), RF (\$40.8 million), DIFR (\$15.3 million), and BUF (\$19.1 million).

Expenditures in Table 1 exclude state-provided capital funds, which vary from year to year and are on the order of \$40 million per year.

TABLE 1: BINGHAMTON UNIVERSITY EXPENDITURES BY FUND TYPE						in thousands of dollars
	2020-21	2021-22	2022-23	2023-24	2024-25	
STATE PURPOSE						
Legislative Appropriation	\$43,138	\$43,138	\$45,087	\$54,047	63,007	
Tuition	152,856	155,684	163,035	167,676	173,992	
SUTRA/FWS	7,724	7,908	10,094	12,358	15,058	
Total	203,718	206,730	218,215	234,081	252,057	
INCOME FUND REIMBURSEMENT	83,199	109,255	124,588	136,405	145,920	
DORMITORY INCOME FUND REIMBURSEMENT	31,568	32,030	38,507	44,475	46,839	
RESEARCH FOUNDATION						
Direct Costs	37,540	39,880	51,270	55,309	72,140	
Indirect Costs	8,994	10,393	12,452	13,191	15,206	
Total	46,534	50,273	63,722	68,500	87,346	
BINGHAMTON UNIVERSITY FOUNDATION						
Unrestricted	4,815	7,955	6,291	5,201	5,568	
Restricted	21,704	26,380	55,802	24,434	40,062	
Total	26,519	34,335	62,093	29,635	45,630	
GRAND TOTAL	\$391,538	\$432,623	\$507,125	\$513,096	\$577,792	

TABLE 2: BINGHAMTON UNIVERSITY ENROLLMENT						
	Fall 2020	Fall 2021	Fall 2022	Fall 2023	Fall 2024	Fall 2025
UNDERGRAD TOTAL (DEGREE AND NON-DEGREE)	14,333	14,307	14,402	14,408	14,668	14,562
New York state residents	12,761	12,852	12,871	12,730	12,754	12,422
Nonresident total	1,572	1,455	1,531	1,678	1,914	2,140
Domestic out-of-state	885	964	1,050	1,216	1,447	1,625
International	687	491	481	462	467	515
GRADUATE TOTAL	3,815	3,748	3,910	4,046	4,147	4,085
New York state residents	2,499	2,444	2,295	2,202	2,374	2,515
Nonresident total	1,316	1,304	1,615	1,844	1,773	1,570
Domestic out-of-state	251	279	292	305	358	343
International	1,065	1,025	1,323	1,539	1,415	1,227
ALL STUDENTS	18,148	18,055	18,312	18,454	18,815	18,647

Table 2 shows the change in enrollment during this period, where the total of all undergraduate and graduate students, degree and non-degree, rose by 499 (2.7%).

DIVISIONAL EXPENDITURES: The first level of expense assignments is to University divisions. As of the 2020–21 academic year, the University has been comprised of ten divisions: Academic Affairs; Advancement; Athletics; the Binghamton University Foundation; Communications and Marketing; Diversity, Equity and Inclusion; Operations; President; Research; and Student Affairs.

STATE PURPOSE EXPENDITURES

BY DIVISION: Table 3 shows University expenditures of State Purpose funds (legislative appropriation and tuition) for each division for five years (2020–21 to 2024–25). These show that University State Purpose expenditures have grown by \$48.3 million (23.7%) between 2020–21 and 2024–25, and that the majority of the increase has occurred in the Division of Academic Affairs (\$36.9 million).

INCOME FUND REIMBURSEMENT

EXPENDITURES: Table 4 shows University expenditures of IFR income for each division for the past five years. IFR expenditures, shown, have grown by \$62.7 million (75.3%) between 2020–21 and 2024–25, as a result of growing student fee income from increased enrollment, modest annual increases in student fee rates, and spending of reserves to meet budget closure.

TABLE 3: STATE PURPOSE EXPENDITURES						in thousands of dollars
	2020-21	2021-22	2022-23	2023-24	2024-25	
Academic Affairs	\$157,304	\$161,081	\$168,354	\$180,364	\$194,298	
Operations	27,085	25,471	28,737	28,151	30,248	
Research	2,704	2,729	2,946	3,305	3,527	
Student Affairs	5,503	6,009	6,224	8,969	9,295	
Advancement	1,999	2,007	1,928	2,063	2,716	
President	1,944	1,858	1,976	2,086	2,249	
Athletics	3,535	3,668	3,704	4,307	5,154	
Foundation	436	459	470	581	0	
Diversity, Equity and Inclusion	1,058	1,216	1,360	1,521	1,690	
Communications and Marketing	2,150	2,231	2,515	2,733	2,881	
TOTAL	\$203,718	\$206,729	\$218,215	\$234,080	\$252,057	

TABLE 4: INCOME FUND REIMBURSEMENT EXPENDITURES						in thousands of dollars
	2020-21	2021-22	2022-23	2023-24	2024-25	
Academic Affairs	\$21,704	\$36,105	\$38,500	\$42,638	\$54,498	
Operations	8,431	10,961	18,010	17,686	12,847	
Research	2,082	2,656	2,909	5,621	6,773	
Student Affairs	40,873	47,473	51,763	53,247	56,158	
Advancement†	—	—	—	—	—	
President	468	769	617	805	1,043	
Athletics	9,394	11,084	12,554	16,036	14,255	
Diversity, Equity and Inclusion	—	24	87	32	31	
Communications and Marketing	247	184	148	340	315	
TOTAL	\$83,199	\$109,256	\$124,588	\$136,405	\$ 145,920	

†Advancement does not use IFR expenditures.

EXPENSES: ACADEMIC AFFAIRS

BREAKDOWN: The scale and complexity of the Division of Academic Affairs, which in 2024-25 accounted for 80.3% percent of the University's State Purpose expenditures (\$194 million), warrants that those expenditures be broken down by schools, colleges, and units of the division. These include: General Administration (admissions, financial aid, international affairs, undergraduate education, business office), College of Community and Public Affairs, Decker College of Nursing and Health Sciences, Harpur College of Arts and Sciences, School of Management, School of Pharmacy and Pharmaceutical Sciences, Thomas J. Watson College of Engineering and Applied Science, Graduate School and Libraries.

Table 5 shows the state-purpose expenditures for each of these units over the past five years.

TABLE 5: STATE PURPOSE EXPENDITURES FOR ACADEMIC AFFAIRS UNITS:

Values for figures 1 to 6 (see page 8), in thousands of dollars

	2020-21	2021-22	2022-23	2023-24	2024-25
COLLEGE OF COMMUNITY AND PUBLIC AFFAIRS					
Faculty	\$5,413	\$6,031	\$6,020	\$6,356	\$6,340
Staff	2,396	2,852	3,051	3,263	4,057
OTPS	788	506	689	633	1,221
Total	8,597	9,389	9,760	10,252	11,619
DECKER SCHOOL OF NURSING AND HEALTH SCIENCES					
Faculty	5,163	5,678	5,594	6,660	7,765
Staff	2,693	4,168	5,667	6,691	8,138
OTPS*	-	-	-	-	-
Total	7,856	9,845	11,261	13,351	15,903
HARPUR COLLEGE OF ARTS AND SCIENCES					
Faculty	57,547	62,812	60,238	64,673	66,494
Staff	8,898	9,841	10,464	11,170	13,045
OTPS*	1,690	-	2,423	948	976
Total	68,135	72,653	73,124	76,791	80,516
SCHOOL OF MANAGEMENT					
Faculty	7,105	7,567	7,327	7,620	8,160
Staff	1,626	1,637	1,755	1,980	2,050
OTPS	55	165	578	656	629
Total	8,786	9,369	9,659	10,257	10,838
SCHOOL OF PHARMACY AND PHARMACEUTICAL SCIENCES					
Faculty	3,910	4,214	4,378	4,776	4,787
Staff	1,549	1,676	1,641	1,813	2,034
OTPS	677	582	491	296	374
Total	6,136	6,472	6,509	6,885	7,194
THOMAS J WATSON COLLEGE OF ENGINEERING AND APPLIED SCIENCE					
Faculty	14,727	17,542	16,574	18,172	20,490
Staff	3,859	4,474	4,736	5,943	6,089
OTPS	2,260	504	1,779	2,629	3,373
Total	20,846	22,520	23,088	26,744	29,952
LIBRARIES					
Faculty/Staff	4,756	5,391	6,017	6,548	6,350
OTPS*	7,101	7,197	7,238	546	1,029
Total	11,857	12,588	13,255	7,094	7,379
GRAD SCHOOL					
Faculty/Staff	683	533	582	597	823
OTPS	-	-	-	46	-
Total	683	533	582	643	823
GENERAL ADMINISTRATION					
Personnel and Expenses	24,408	17,712	21,115	28,347	30,075
GRAND TOTAL	\$157,304	\$161,081	\$168,354	\$180,364	\$194,298

*Decker OTPS expenses charged to IFR. In 2021-22, Harpur OTPS expenses charged to IFR. In 2023-24, Libraries State Purpose OTPS budget moved to IFR.

TENURED AND TENURE-TRACK FACULTY: An emphasis of our faculty hiring plan in the past 11 years has been recruiting full-time tenured or tenure-track faculty (FTTTF), and nearly all of our new revenues used for faculty hires have been targeted toward FTTTF positions. Table 6 shows the changes in full-time tenure-track faculty over the past 11 years by school/college. Figures 1 to 6 (pages 8–10) show graphs of enrollment and expenditures for each school/college for academic years 2020–21 to 2024–25.

The trends in expenditures make sense, as increasing enrollments drive increases in revenues that support faculty hiring, which together with discretionary, across-the-board and promotional salary increases result in higher faculty expenditures. However, it is difficult to judge if the proportion of growth of expenditures and enrollment is similar for each school/college for a variety of reasons, including:

- Differential in tuition rates between in-state and out-of-state students.
- Differential in tuition rates between graduate and undergraduate programs.
- Time lags between enrollment changes and faculty hiring decisions.
- Salary differentials among ranks and disciplines.

TABLE 6: FULL-TIME TENURED AND TENURE-TRACK FACULTY

	Fall '14	Fall '15	Fall '16	Fall '17	Fall '18	Fall '19	Fall '20	Fall '21	Fall '22	Fall '23	Fall '24	Net New
CCPA	47	46	50	52	50	53	54	44	48	48	48	1
Decker	18	18	18	17	14	14	17	17	23	32	35	17
Harpur	356	373	376	376	368	364	363	361	368	380	397	41
Management	38	40	41	39	43	41	40	38	40	39	43	5
Pharmacy	—	1	6	10	12	11	15	15	16	17	18	18
Watson	83	88	87	93	97	96	101	96	102	110	130	47
Libraries	23	22	24	24	28	26	25	26	28	32	30	7
University-wide programs	—	—	—	—	1	1	4	10	1	2	3	3
Total	565	588	602	611	613	606	619	607	626	660	704	139

— NYSUNY 2020 legislation in effect —



ENROLLMENT AND EXPENDITURES

COLLEGES AND SCHOOLS: Figures 1 to 6 show values and graphs of State Purpose expenditures by each school and college and their corresponding enrollment of students. The student enrollment data for each school/college are the actual students

taught by faculty in that school/college and are divided into out-of-state, in-state, undergraduates and graduate students. The expenses are broken into three components: faculty salaries, staff salaries and OTPS (other than personnel services).

In general, the trends for all the schools and colleges show increasing enrollments and increasing expenditures, with a majority of these increases supporting faculty hiring (gold lines in Figures 1 to 6).

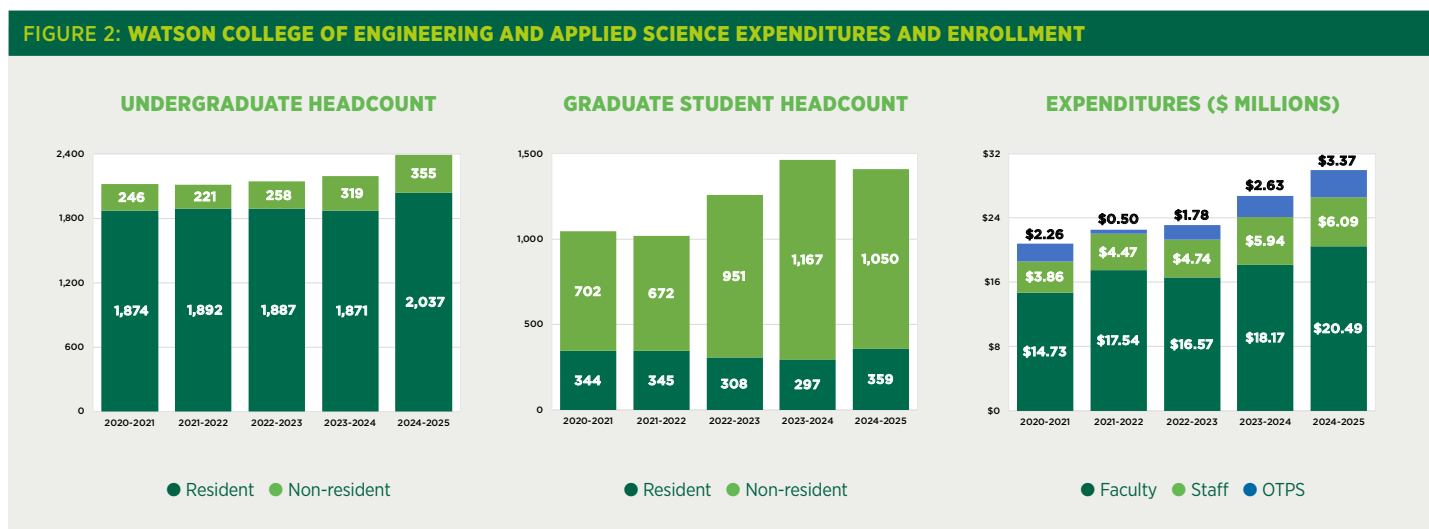
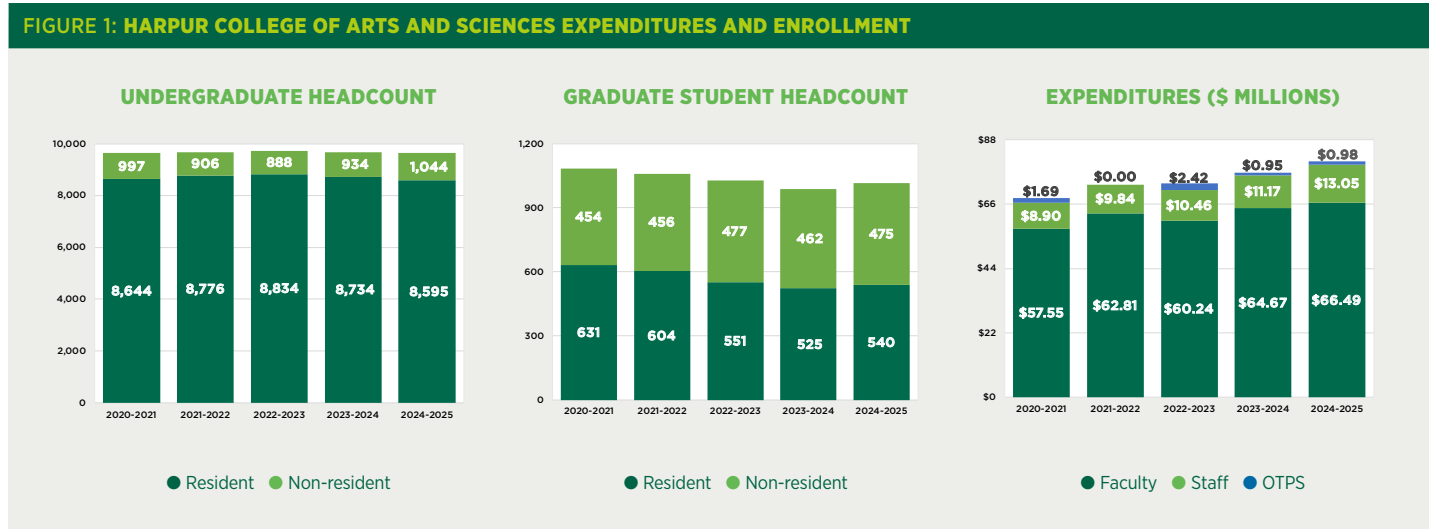


FIGURE 3: SCHOOL OF MANAGEMENT EXPENDITURES AND ENROLLMENT

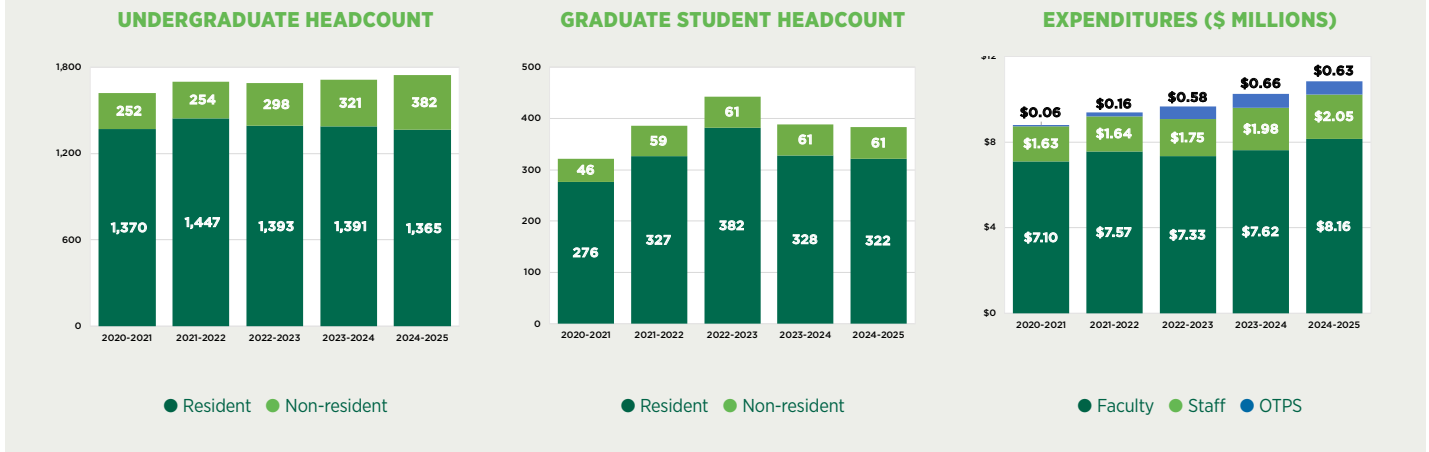


FIGURE 4: DECKER COLLEGE OF NURSING AND HEALTH SCIENCES EXPENDITURES AND ENROLLMENT

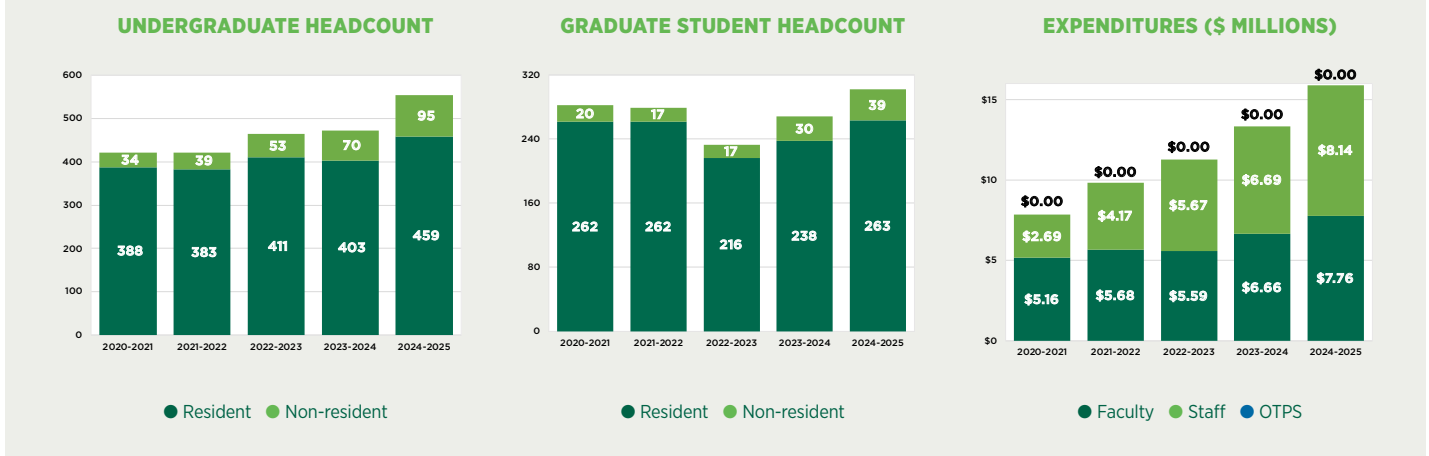


FIGURE 5: COLLEGE OF COMMUNITY AND PUBLIC AFFAIRS EXPENDITURES AND ENROLLMENT

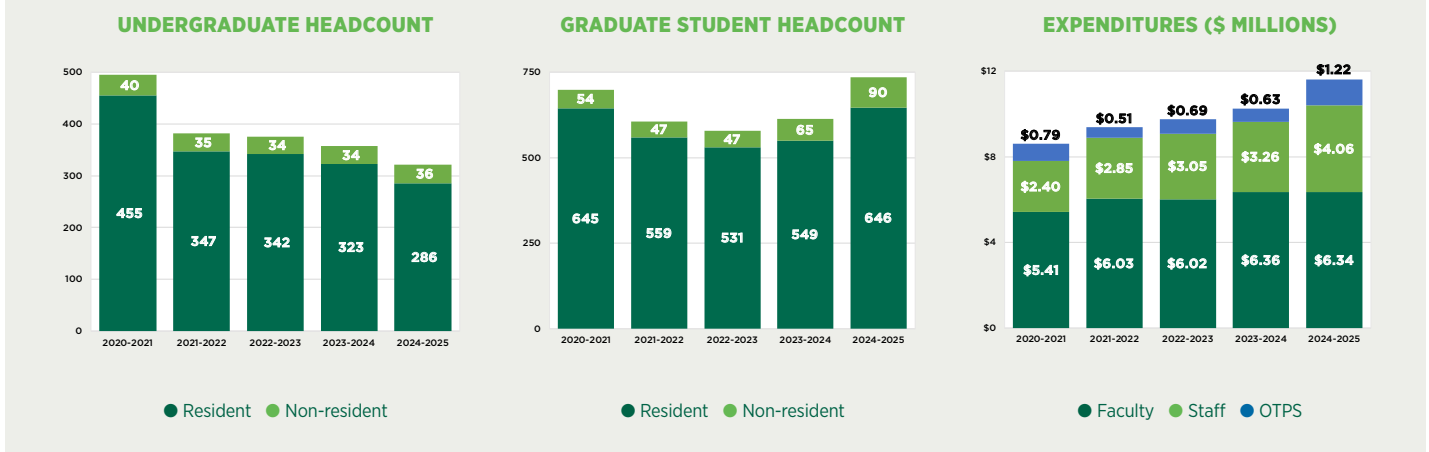
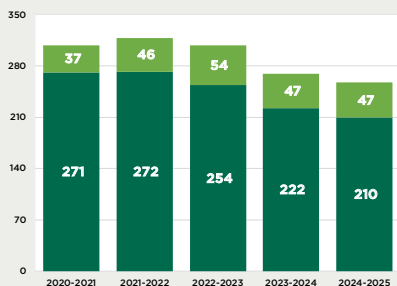


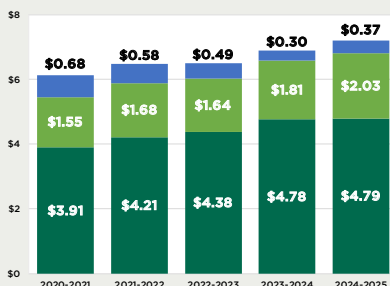
FIGURE 6: SCHOOL OF PHARMACY AND PHARMACEUTICAL SCIENCES EXPENDITURES AND ENROLLMENT

GRADUATE STUDENT HEADCOUNT

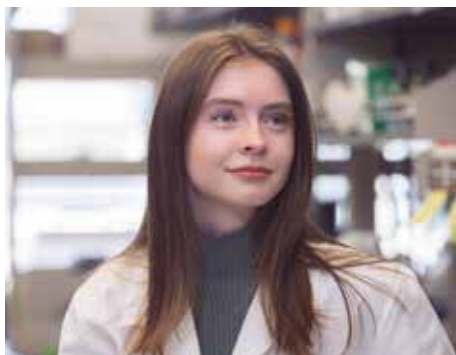


● Resident ● Non-resident

EXPENDITURES (\$ MILLIONS)



● Faculty ● Staff ● OTPS



SUPPLEMENTARY MATERIAL

Tables 7, 8 and 9 show school- and college-level expenditures of RF, IFR and BUF funds. Tables 10 and 11 show detailed professional staff counts and Table 12 shows detailed faculty counts by school and college. These supplemental tables were generated at the request of the Faculty Senate Budget Review Committee and the Professional Staff Senate Executive Committee. Requests for further information are welcomed and encouraged, and can be made through the president's or provost's offices.

TABLE 7: RESEARCH EXPENDITURES BY SCHOOL/COLLEGE						
						in thousands of dollars
Unit	Type	2020-21	2021-22	2022-23	2023-24	2024-25
Administration	Direct	\$4,304	\$4,682	\$8,017	\$11,337	\$24,101
	Indirect	588	606	1,066	1,515	2,546
	Total	4,892	5,288	9,083	12,852	26,647
CCPA	Direct	2,273	3,515	3,469	3,777	4,894
	Indirect	285	568	486	591	800
	Total	2,558	4,083	3,955	4,368	5,694
Decker	Direct	1,075	1,431	1,619	1,672	1,037
	Indirect	100	114	156	285	134
	Total	1,176	1,544	1,774	1,957	1,171
Harpur	Direct	13,132	13,771	15,506	15,900	16,715
	Indirect	4,078	4,561	4,826	4,813	5,243
	Total	17,210	18,332	20,332	20,713	21,958
Management	Direct	79	72	124	130	306
	Indirect	29	17	36	51	104
	Total	108	89	160	181	410
Pharmacy	Direct	767	693	1,387	2,209	2,758
	Indirect	241	274	618	787	1,015
	Total	1,008	967	2,005	2,996	3,773
Watson College	Direct	15,910	15,717	21,078	20,284	22,329
	Indirect	3,673	4,254	5,253	5,149	5,364
	Total	19,583	19,971	26,331	25,433	27,693
Foundation	Direct	—	—	71	—	—
	Indirect	—	—	11	—	—
	Total	—	—	82	—	—
Grand Total		\$46,534	\$50,274	\$63,722	\$68,500	\$87,346

TABLE 8: INCOME FUND REIMBURSABLE (IFR) EXPENDITURES BY SCHOOL/COLLEGE					
in thousands of dollars					
Unit	2020-21	2021-22	2022-23	2023-24	2024-25
CCPA	\$257	\$1,167	\$1,053	\$1,124	\$901
Decker	836	1,185	1,277	1,828	2,585
Harpur	3,373	5,518	2,844	4,658	7,017
Management	697	654	683	355	941
Pharmacy	1,012	1,207	1,000	1,271	1,841
Watson	1,389	2,546	3,135	3,370	4,427
Libraries	107	864	936	7,856	6,725
Graduate School	997	1,297	1,379	1,750	1,421
Total	\$8,667	\$14,437	\$12,308	\$22,212	\$25,858

*In 2023-24, Libraries State Purpose OTPS budget moved to IFR.

TABLE 9: BINGHAMTON UNIVERSITY FOUNDATION EXPENDITURES BY SCHOOL					
in thousands of dollars					
	2020-21	2021-22	2022-23	2023-24	2024-25
CCPA	\$285	\$334	\$310	\$357	\$462
Decker	997	1,258	1,652	1,360	1,752
Harpur	2,610	2,594	3,487	4,037	6,119
Management	1,700	1,751	1,993	1,909	2,571
Pharmacy	76	130	212	241	373
Watson	974	540	929	1,031	1,162
Libraries	109	124	91	180	123
Graduate School	58	59	66	85	108
General*	755	1,743	2,948	2,109	1,978
Total	\$7,564	\$8,534	\$11,688	\$11,309	\$14,648

*General includes Provost Office operation as well as Enrollment Management/Undergraduate Admissions. As of 2023-24 University Art Museum and Anderson Performing Arts Center are in Harpur.

TABLE 10: RESEARCH FOUNDATION EMPLOYEE COUNT BY SALARY LEVEL					
Salary level	Spring 2021	Spring 2022	Spring 2023	Spring 2024	Spring 2025
RF1	11	35	35	25	51
RF2	67	69	71	87	76
RF3	39	23	29	36	32
RF4	14	14	15	12	16
RF5	5	4	7	13	11
RF6	3	5	3	3	2
RF total	140	150	159	175	188

TABLE 11: UUP EMPLOYEE COUNT BY SALARY LEVEL

Level	Fall 2021	Fall 2022	Fall 2023	Fall 2024	Fall 2025	Level	Fall 2021	Fall 2022	Fall 2023	Fall 2024	Fall 2025
ACADEMIC AFFAIRS						OPERATIONS					
SL 1	28	30	34	39	46	SL 1	1	1	—	—	2
SL 2	59	64	63	63	64	SL 2	15	20	13	14	13
SL 3	158	181	203	228	242	SL 3	67	73	78	82	88
SL 4	85	90	97	95	105	SL 4	37	39	39	38	38
SL 5	40	45	41	40	43	SL 5	22	18	20	21	18
SL 6	6	7	7	8	7	SL 6	5	5	6	6	6
Total	376	417	445	473	506	Total	147	155	156	161	165
ADVANCEMENT/FOUNDATION						PRESIDENT'S OFFICE					
SL 1	—	1	1	—	—	SL 1	—	—	—	—	—
SL 2	1	1	—	2	2	SL 2	—	—	—	1	1
SL 3	—	—	2	2	2	SL 3	3	2	5	5	5
SL 4	4	4	4	3	3	SL 4	1	—	—	1	1
SL 5	9	6	7	6	4	SL 5	1	1	1	1	1
SL 6	1	2	2	2	1	SL 6	1	1	1	1	1
Total	15	14	16	15	12	Total	6	4	7	9	9
ATHLETICS						RESEARCH					
SL 1	9	6	9	9	10	SL 1	—	—	—	—	—
SL 2	38	39	41	43	39	SL 2	2	3	3	3	2
SL 3	3	3	3	7	6	SL 3	9	5	8	9	8
SL 4	19	20	18	16	17	SL 4	8	8	7	8	6
SL 5	5	6	5	8	9	SL 5	4	3	5	4	5
SL 6	5	5	6	7	7	SL 6	2	2	4	3	2
Total	78	79	82	91	88	Total	24	20	27	27	23
DIVERSITY, EQUITY AND INCLUSION						STUDENT AFFAIRS					
SL 1	1	—	—	—	—	SL 1	51	13	2	1	1
SL 2	3	2	2	2	3	SL 2	28	35	42	47	43
SL 3	4	3	5	3	4	SL 3	50	58	71	89	96
SL 4	—	—	—	1	1	SL 4	46	39	42	46	49
SL 5	—	1	—	1	1	SL 5	17	18	19	21	19
SL 6	—	—	—	—	—	SL 6	3	4	4	4	4
Total	8	6	7	7	9	Total	195	167	180	208	212
COMMUNICATIONS AND MARKETING											
SL 1	—	—	—	—	—	SL 1	—	—	—	—	—
SL 2	8	10	9	7	4	SL 2	8	10	9	7	4
SL 3	16	17	21	22	25	SL 3	16	17	21	22	25
SL 4	3	3	2	4	6	SL 4	3	3	2	4	6
SL 5	—	—	—	—	—	SL 5	—	—	—	—	—
SL 6	—	—	—	—	—	SL 6	—	—	—	—	—
Total	27	30	32	33	35	Total	27	30	32	33	35
Univ. total	875	893	950	1024	1058						

TABLE 12: FACULTY BY RANK

	Fall '21	Fall '22	Fall '23	Fall '24	Fall '25		Fall '21	Fall '22	Fall '23	Fall '24	Fall '25
CCPA						MANAGEMENT					
Professor full-time	8	7	7	9	9	Professor full-time	8	8	6	6	5
Assoc. professor full-time	19	24	24	23	29	Assoc. professor full-time	14	12	12	14	14
Assistant professor full-time	17	17	17	16	15	Assistant professor full-time	16	20	21	23	29
Tenured/tenure-track full-time	44	48	48	48	53	Tenured/tenure-track full-time	38	40	39	43	48
Non-tenure-track full-time	17	10	9	18	18	Non-tenure-track full-time	4	3	2	4	0
Total full-time	61	58	57	66	71	Total full-time	42	43	41	47	48
Tenure-track part-time	0	0	0	0	0	Tenure-track part-time	0	0	0	0	0
Non-tenure-track part-time	33	41	52	44	49	Non-tenure-track part-time	31	30	31	19	20
Total part-time	33	41	52	44	49	Total part-time	31	30	31	19	20
Total headcount	94	99	109	110	120	Total headcount	73	73	72	66	68
DECKER (INCLUDES HEALTH AND WELLNESS)						PHARMACY					
Professor full-time	5	5	5	5	4	Professor full-time	5	5	5	5	4
Assoc. professor full-time	7	13	15	13	15	Assoc. professor full-time	3	4	4	4	4
Assistant professor full-time	5	5	12	17	17	Assistant professor full-time	7	7	8	9	5
Tenured/tenure-track full-time	17	23	32	35	36	Tenured/tenure-track full-time	15	16	17	18	13
Non-tenure-track full-time	40	57	60	59	65	Non-tenure-track full-time	13	13	15	14	19
Total full-time	57	80	92	94	101	Total full-time	28	29	32	32	32
Tenure-track part-time	1	0	0	0	0	Tenure-track part-time	2	1	1	1	0
Non-tenure-track part-time	39	39	47	48	59	Non-tenure-track part-time	4	0	0	1	1
Total part-time	40	39	47	48	59	Total part-time	6	1	1	2	1
Total headcount	97	119	139	142	160	Total headcount	34	30	33	34	33
HARPUR						WATSON					
Professor full-time	125	126	126	135	131	Professor full-time	38	34	38	43	42
Assoc. professor full-time	152	160	160	158	157	Assoc. professor full-time	24	26	29	32	38
Assistant professor full-time	68	65	75	83	96	Assistant professor full-time	34	42	43	55	53
Tenure-track Instructor	16	17	19	21	21	Tenure-track instructor	0	0	0	0	0
Tenured/tenure-track full-time	361	368	380	397	405	Tenured/tenure-track full-time	96	102	110	130	133
Non-tenure-track full-time	101	130	139	146	155	Non-tenure-track full-time	14	16	16	19	23
Total full-time	462	498	519	543	560	Total full-time	110	118	126	149	156
Tenure-track part-time	10	6	6	2	2	Tenure-track part-time	1	2	2	2	1
Non-tenure-track part-time	149	134	108	98	93	Non-tenure-track part-time	13	15	13	14	5
Total part-time	159	140	114	100	95	Total part-time	14	17	15	16	6
Total headcount	621	638	633	643	655	Total headcount	124	135	141	165	162

	Fall '21	Fall '22	Fall '23	Fall '24	Fall '25
LIBRARIES					
Librarian full-time	0	1	1	1	1
Assoc. librarian full-time	14	13	13	14	17
Assistant librarian full-time	3	7	12	10	8
Senior assistant librarian full-time	8	7	6	4	4
Tenured/tenure-track full-time	25	28	32	29	30
Visiting librarian full-time	0	0	0	0	0
Total headcount	25	28	32	29	30

UNIVERSITY-WIDE PROGRAMS					
Professor full-time	2	0	0	1	3
Assoc. professor full-time	5	0	1	1	1
Assistant professor full-time	2	1	1	1	0
Instructor full-time	1	0	0	0	0
Tenured/tenure-track full-time	10	1	2	3	4
Non-tenure-track full-time	20	4	16	17	16
Total full-time	30	5	18	20	20
Tenure-track part-time	1	1	1	1	0
Non-tenure-track part-time	8	7	13	13	12
Total part-time	9	8	14	14	12
Total headcount	39	13	32	34	32

Total tenured/tenure-track full-time headcount	606	626	660	703	722
Total full-time headcount	815	859	917	980	1,018
Total part-time headcount	292	276	274	243	242

Total faculty headcount	1,107	1,135	1,191	1,223	1,260
--------------------------------	--------------	--------------	--------------	--------------	--------------





BINGHAMTON
UNIVERSITY
STATE UNIVERSITY OF NEW YORK

Office of the President

PO Box 6000, Binghamton, NY 13902

binghamton.edu/president