

# BINGHAMTON UNIVERSITY

## LECTURE HALL BASEMENT FLOOR PLAN

BLDG. NO. 034

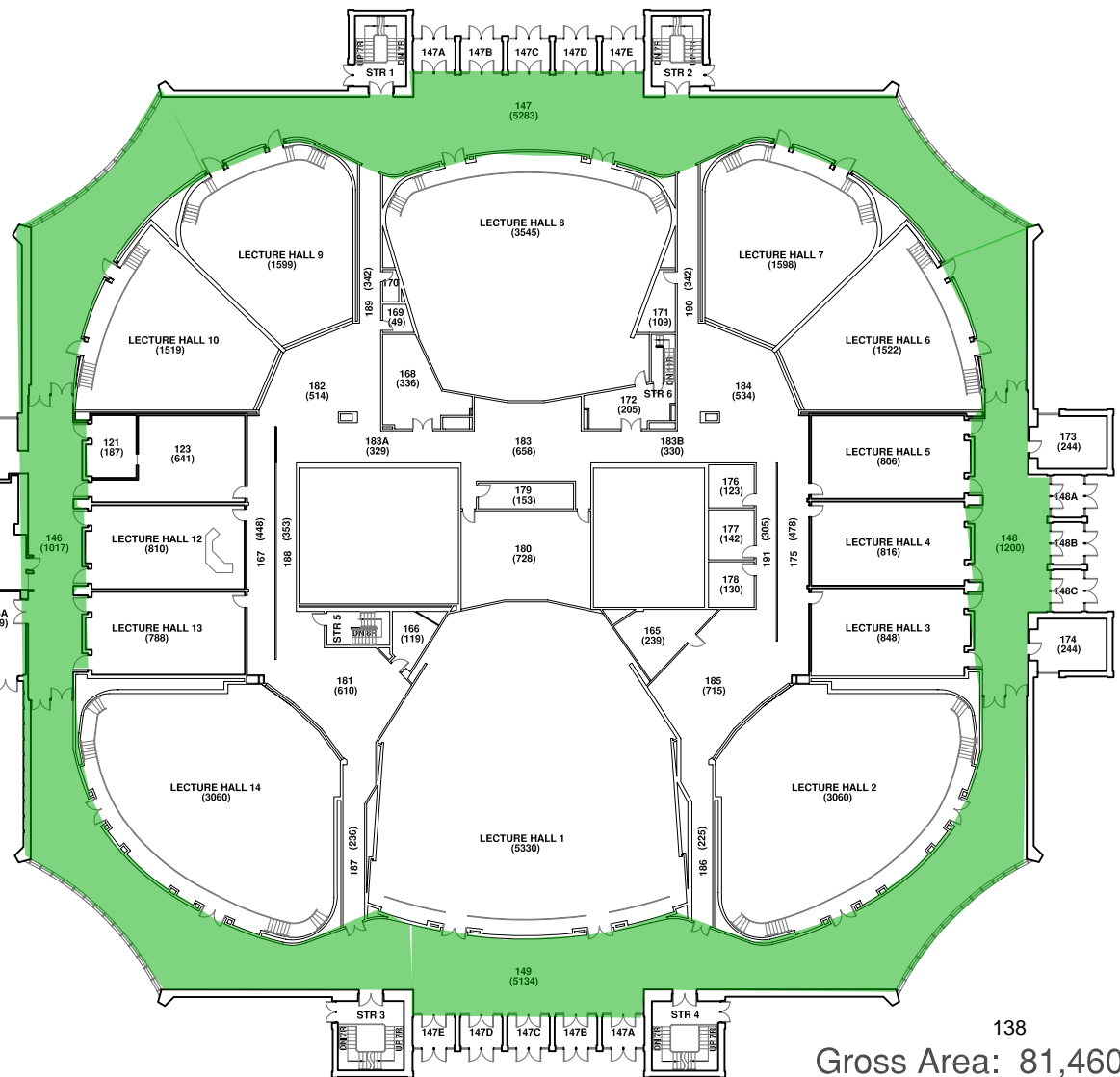
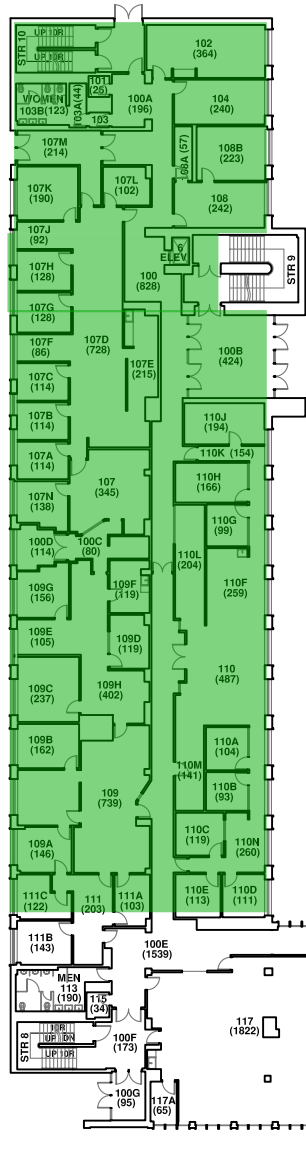
06/07



scale 0 10 20 40 80 feet

137

Gross Area: 81,197 sf



# BINGHAMTON UNIVERSITY

## LECTURE HALL FIRST FLOOR PLAN

BLDG. NO. 034

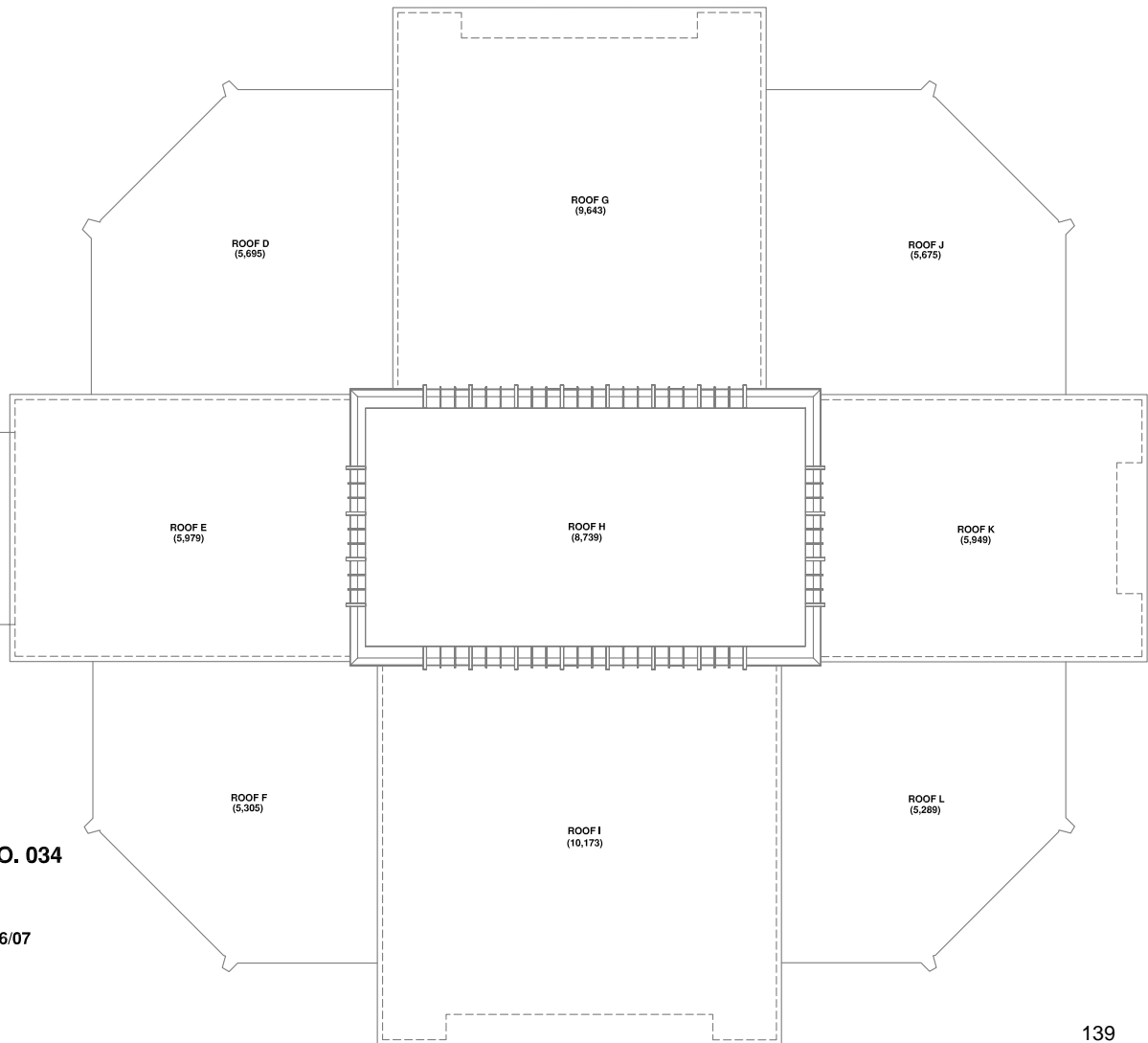
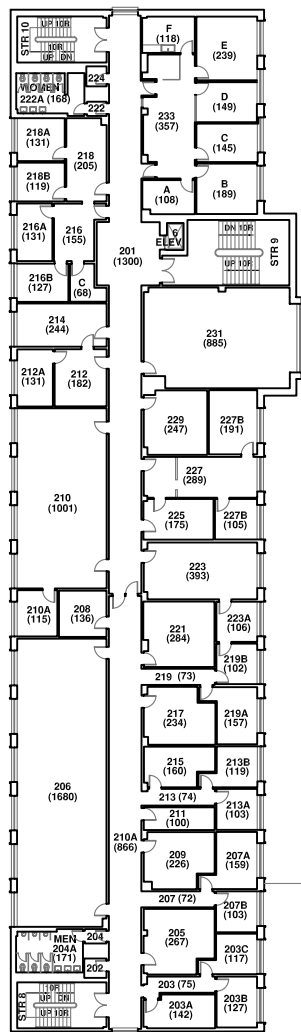


02/09

scale 0 10 20 40 80 feet

138

Gross Area: 81,460 sf



# BINGHAMTON UNIVERSITY

## LECTURE HALL SECOND FLOOR PLAN

BLDG. NO. 034

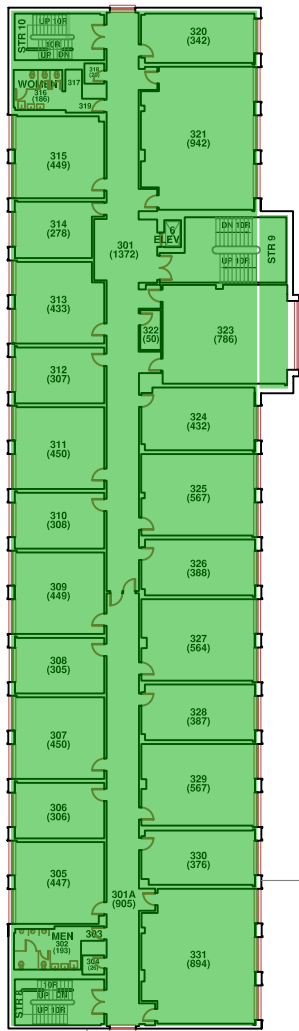


06/07

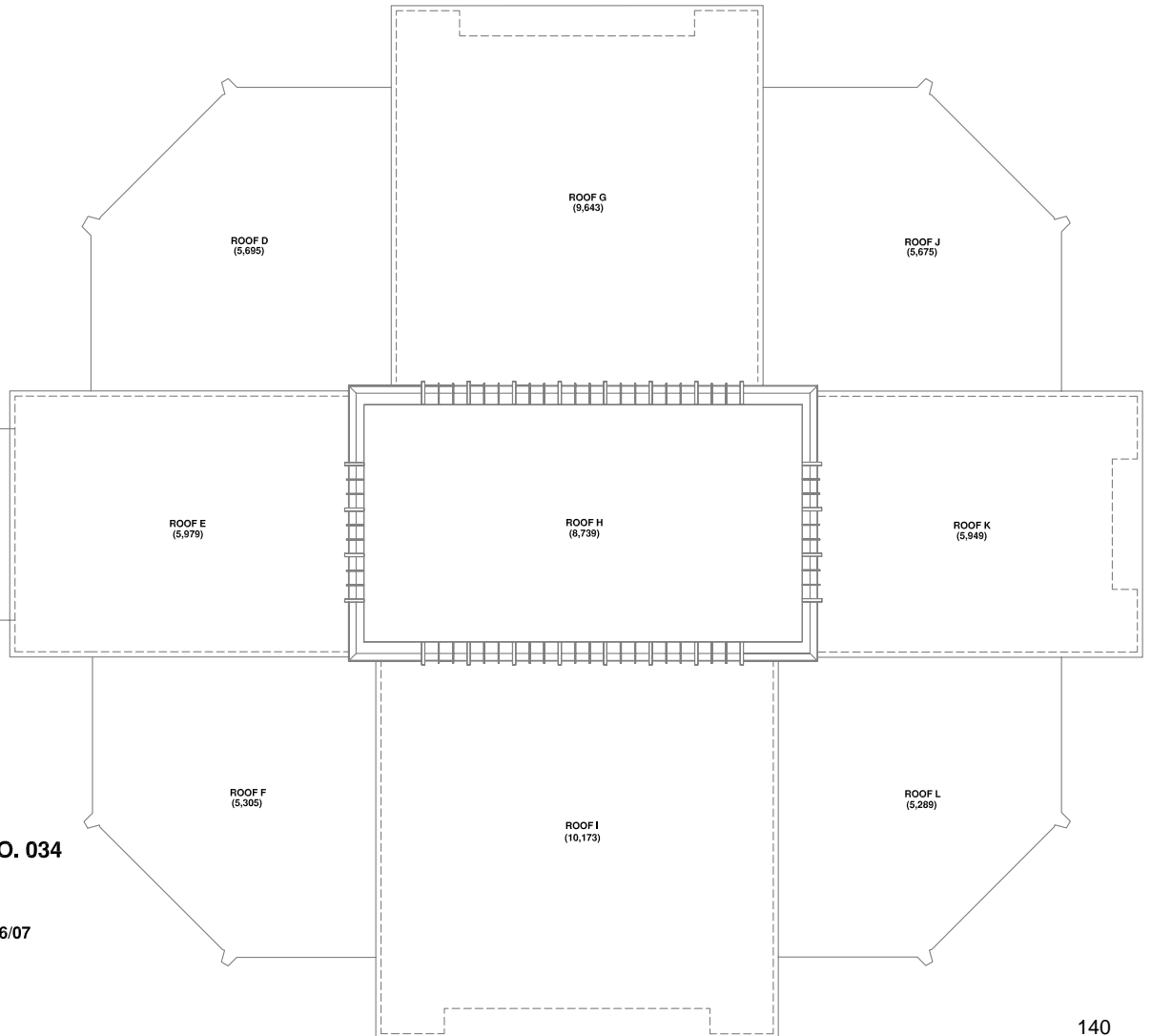
scale 0 10 20 40 80 feet

139

Gross Area: 16,073 sf



ROOF C  
(5,091)



# BINGHAMTON UNIVERSITY

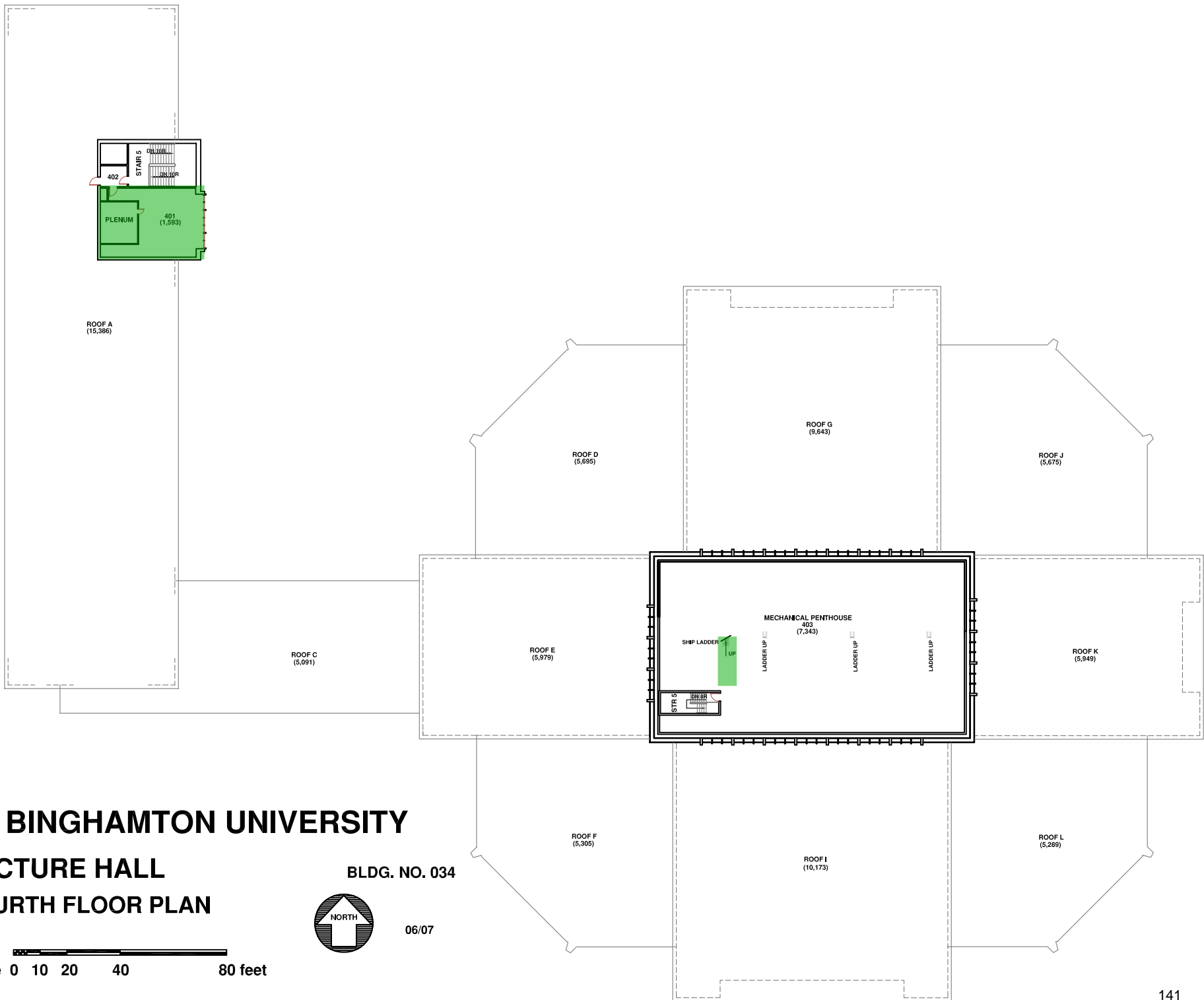
## LECTURE HALL THIRD FLOOR PLAN

BLDG. NO. 034



06/07

scale 0 10 20 40 80 feet



**BINGHAMTON UNIVERSITY**

**LECTURE HALL  
FOURTH FLOOR PLAN**

scale 0 10 20 40 80 feet

**BLDG. NO. 034**  
06/07

141  
**Gross Area: 8,936 sf**