



BINGHAMTON UNIVERSITY

SCHOLARS PROGRAM NEWSLETTER

FALL 2009, ISSUE 1 SEPTEMBER 2009

WELCOME TO SCHOLARS!

Welcome to Binghamton University and the Binghamton Scholars Program Newsletter!

Our newsletter will be issued monthly to give you important information about the Scholars Program and Binghamton University. Academically, we will keep you informed about important dates and policy that you should be aware of. We will also be telling you about exciting opportunities to get involved on and off campus ranging from internships and job opportunities to Scholars social events and fun things to do in Binghamton.

We encourage you to get involved as doing so is one

of the best ways to make friends, gain experience, improve your resume and have fun! Be sure to check this newsletter monthly for upcoming programs and events.

We hope to enrich your experience at Binghamton University in as many ways as possible. Please contact our office with ideas and suggestions to improve your college experience. We encourage all ideas and we will do our best to help you carry them out. The Scholars Program, and therefore this newsletter, is yours. We welcome any and all contributions. Do not hesitate to contact us with an upcoming event for an organization you are involved



in or an article you would like to write.

We look forward to another exciting year together!

-The Scholars Program Staff

SPECIAL POINTS OF INTEREST:

- *Scholars will distribute newsletters monthly.*
- *The newsletter will include important information about academic and social events on and off campus.*
- *Get involved to make friends, gain experience, improve your resume and have fun.*
- *Students with ideas for the scholars program or the newsletter should let us know!*

INSIDE THIS ISSUE:

SCHEDULE OF EVENTS	2
SCHOLARS COURSES OFFERED THIS SEMESTER	2
DESCRIPTIONS OF COURSES OFFERED	3
CONFIRMATION OF ENROLLMENT	3
MEET THE NEW SCHOLARS GRADUATE ASSISTANTS	4
SCHOLARS III AND IV	4

THE SCHOLARS LISTSERV

As part of the Binghamton University Scholars Program, students are automatically enrolled in the Binghamton University Scholars e-mail listserv in the fall of their freshman year. This listserv will use your BU e-mail account.

The listserv will be used to give you information about upcoming events and important academic policies that will affect you as a Binghamton Scholar. It is very important to check your e-mail account regularly for these important announcements.

If for some reason you are not receiving e-mails from the program, please contact the Scholars Program Office at (607)777-3583 or scholars@binghamton.edu.

SEPTEMBER 2009

Sun	Mon	Tue	Wed	Thu	Fri	Sat
	31 First Day of Classes	1	2	3	4	5
6	7 No Classes	8	9	10	11 Add/Drop Deadline	12
13	14	15	16	17	18 Classes Recess at 1:00 pm	19
20	21	22	23	24	25	26
27	28 No Classes	29	30			

SCHEDULE OF EVENTS

- August 31- First Day of Classes: Classes begin for the semester at 8:00am
- September 7- No Classes (Labor Day): No classes will be in session all day
- September 11- Add/Drop Deadline: Students must make all final changes to their schedule before this day. Changes after this date require paperwork that can be found at your Academic Advising Office and require you to pay a \$20 late fee.
- September 18- Classes Recess at 1:00pm (Rosh Hashanah): No classes will be in session as of 1:00pm
- September 28- No Classes (Yom Kippur): No classes will be in session all day

SCHOLARS COURSES OFFERED THIS SEMESTER

Subj	Crse	Title	Days	Time	Instructor	Location	Gened
SCHL	127	Discovering The Scholar Within	R	07:10 pm-08:10 pm	Kristie A. Shirreffs	LH 003	
SCHL	227	Leadership And Achieving Goals	R	06:00 pm-07:00 pm	Kristie A. Shirreffs	RC 205	
SCHL	227	Leadership And Achieving Goals	T	04:25 pm-05:25 pm	Milton D. Chester	TU 219	
SCHL	227	Leadership And Achieving Goals	W	04:40 pm-05:40 pm	Kristen M. Greco	RC 205	
SCHL	227	Leadership And Achieving Goals	W	05:50 pm-06:50 pm	Kristen M. Greco	RC 205	
SCHL	227	Leadership And Achieving Goals		TBA	TBA	TBA	
SCHL	280A	Peace A Historical Perspective	TR	02:50 pm-04:15 pm	George D. Catalano	SW 309	H & J
SCHL	280B	Modern Satire	TR	10:05 am-11:30 am	Michael J. Conlon	TU 309	C & H
SCHL	280C	Energy and...You!	TR	10:05 am-11:30 am	John A. Fillo	TU 205	O
SCHL	280F	Plato and Aristotle	TR W	08:30 am-09:55 am 08:30 am-09:30 am	Anthony Preus	EB 110 TU 219	H & J

DESCRIPTIONS OF COURSES OFFERED

Discovering the Scholar Within: Incoming Binghamton Scholars students will learn and develop powerful new strategies for tackling challenges both timely and timeless, including open-ended problem solving, critical and creative thinking, self-expression, goal setting and balancing life's myriad of competing interests. As a model for developing young scholars, the principles of Leonardo daVinci shall be discussed and practiced in a highly student centered learning environment.

Leadership and Achieving Goals: Binghamton Scholars students will learn and develop powerful new strategies for tackling solving open-ended design problems. Solving design problems in a team format will enable students to develop both their leadership and teamwork skills. The development of both critical and creative thinking skills is addressed. A formal design

methodology shall be introduced which consists of the following seven universal design principles: Acceptance, Definition, Analysis, Ideation, Selection, Implementation, and Evaluation of the solution.

Peace- A Historical Perspective: The UN General Assembly unanimously proclaimed the first decade of the 21st century to be a Decade for a Culture of Peace and Nonviolence. Students will be challenged to confront the issues of peace and non-violence through a careful consideration of the works of many of the most important writers and activists. By the end of the term, students will be able to describe various philosophical foundations used in formulating ideas concerning peace and describe issues related to attitudes towards peace in the advanced world.

Modern Satire: This course looks at a selection of modern works of satire in the context

of the double structure of rejection and identification. The course aims to provide students with: a knowledge of the fundamental elements of satire, an understanding of the recent history of critical and theoretical approaches to satire, and practice in framing questions about literary texts and writing about them.

Energy and...You!: Present energy consumption by sector, i.e., transportation, industrial, commercial, residential and energy supply modes such as coal, oil, natural gas, nuclear. Factors for consideration when predicting future energy needs. Prospects for alternative fuels such as synthetic oils and hydrogen.

Plato and Aristotle: Brief introduction to philosophy before Socrates; more extensive study of Socratic dialogues and Plato's philosophy; general introduction to Aristotle's ethics, politics, theory of language, science and metaphysics.

NEW SECTIONS OF SCHL 227 HAVE BEEN ADDED - CHECK YOUR SCHEDULE TO SEE IF THE NEW SECTIONS WILL FIT!

DON'T FORGET THAT YOU CAN GET GENERAL EDUCATION REQUIREMENTS FULFILLED USING SCHOLARS COURSES!

CONFIRMATION OF ENROLLMENT

All students are required to complete Fall 2009 Confirmation of Enrollment by the FIFTH DAY OF CLASSES or all your courses will be automatically cancelled whether or not your semester bill is paid. If your courses are cancelled because you failed to confirm, you must re-enroll in courses online via BU Brain.

How to Confirm Enrollment:

1. Log in to BU Brain.
2. Select "Start of Term" tab.
3. Select "Complete Confirmation of Enrollment."
4. You may receive a "Survey Term" prompt. Select "Fall 2009" and click the "Submit" button.
5. You will be presented with information that you are required to review. Please read all information carefully. After reading each page, click "Next Page" button.
6. Then, Accept & Confirm. On page 3, assure the circle to the left of "Accept & Confirm" contains a black dot. Then click the "Confirm Your Enrollment" button.

CONFIRM Your Enrollment

CONFIRM YOUR ENROLLMENT BEFORE YOU LOSE YOUR COURSES!



BINGHAMTON SCHOLARS PROGRAM

Binghamton University
PO Box 6000
Binghamton, NY 13902-6000

Phone: 607-777-3583
E-mail: scholars@binghamton.edu

SEE US ON THE WEB!
WWW.BINGHAMTON.EDU/SCHOLARS/

EXCELLENCE ~ INTEGRITY
COMMUNITY ~ PERSPECTIVES
ETHICS

MEET THE NEW SCHOLARS GRADUATE ASSISTANTS

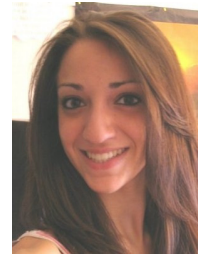


Kristie Shirreffs

Program:
Masters in Business Administration

Previous Degree:
Bachelors of Science in Bioengineering, Binghamton University 2009

Contact Information:
TU104
Monday & Wednesday
9:30am-11:30am, Tuesday & Thursday 12:00pm-2:00pm
kshirre1@binghamton.edu



Kristen Greco

Program:
Masters in Business Administration

Previous Degree:
Bachelors of Science in Bioengineering, Binghamton University 2009

Contact Information:
TU104
Wednesday 2:00pm-4:00pm,
Thursday 12:00pm-2:00pm
kgreco1@binghamton.edu

SCHOLARS III AND IV

Scholars III and IV are experiential learning experiences that Scholars students complete in their junior and senior years, respectively.

Scholars III can be completed by the following projects: internships, field study/work, study abroad, applied research, clinical experience, community service, studio experience in the arts, laboratory research/independent study, teaching practicum,

outdoor education, volunteer work, mentoring, and service learning

Scholars IV can be completed by earning honors in the department of your major, by completing an independent study course/research experience/independent project/capstone project, or by completing a 400 level course in your major that is not required for your degree.

Students who are completing these requirements this year are required to submit the proper paperwork within the first few weeks of school.

Application paperwork and more information can be found in the Scholar's Handbook on the Scholar's Website.

DON'T FORGET TO SUBMIT YOUR SCHOLARS III AND IV PAPERWORK IN THE FIRST FEW WEEKS OF CLASS IF IT'S YOUR JUNIOR OR SENIOR YEAR!

SUBMIT YOUR IDEAS!

If you have any ideas for the Scholar's Program Newsletter, let us know!

E-mail your ideas to Kristie at kshirre1@binghamton.edu